

Installation Instructions



Double-Wall,
Close Clearance Connectors

DWL

A MAJOR CAUSE OF VENT RELATED FIRES IS FAILURE TO MAINTAIN REQUIRED CLEARANCES (AIR SPACES) TO COMBUSTIBLE MATERIALS. IT IS OF THE UTMOST IMPORTANCE THAT DVL (CLOSE CLEARANCE CONNECTOR) BE INSTALLED ONLY IN ACCORDANCE WITH THESE INSTRUCTIONS.

NOTE:

Read through all of these instructions before beginning your installation. Failure to install as described in this instruction will void the manufacturer's warranty, and may have an effect on your homeowner's insurance and UL listing status. Keep these instructions for future reference. This booklet also contains instructions for installing a venting system within an existing masonry chimney, and for installations passing through a cathedral ceiling.

Dear Customer, Installer, or End User:

We welcome any comments, ideas, input or complaints regarding matters pertaining to our DuraVent products.

If you are searching for tech support or product information, please phone us at 800-835-4429. Or email us at:
techsupport@duravent.com



LISTED
MH14089

DOUBLE-WALL, CLOSE CLEARANCE STOVEPIPE

For the most up-to-date installation instructions, see www.duravent.com

CONTENTS

LISTING 4
PERMITS 4
CLEARANCE 4
APPLICATION 4
MOBILE HOMES 4
INSTALLATION 5
CONNECTING TO CHIMNEY 5
ADJUSTABLE PIPE 5
TELESCOPING PIPE 6
CONNECTION TO STOVE 6
CLEANING 6

DWL
TMD

LISTING:

UL and cUL listed by UL file # 14089
For installation in the United States and
Canada

PERMITS:

Contact local Building or Fire Officials about
permits, restrictions, and installation inspection
in your area.

CLEARANCE:

6" clearance to walls
8" clearance to ceiling
Clearances are measured at a 90 degree
angle to the pipe.

APPLICATION:

Used to connect an appliance that burns wood,
coal, oil, or gas to a DuraVent Factory Built
chimney system tested and listed to UL103HT.
Can be used anywhere single wall stove pipe
is allowed.
Stove pipe installation should be as short and
straight as reasonably possible.
DVL stove pipe is required for use with a solid
fuel burning appliances installed in a mobile
home.

NOTES:

Use only authorized DuraVent DVL parts.
Do not mix with single wall stove pipe.
Do not mix with other products or improvise
solutions. Do not install damaged parts.
All wood burning appliances require their own
separate connector pipe and chimney system.
**DO NOT ENCLOSE DOUBLE-WALL
CONNECTOR PIPE** or fittings and/or pass
through walls, ceilings, attics or closets.
DVL Pipe cannot be cut.
DVL (Close Clearance Connector) pipe will
exhibit a moderate paint-like odor and smoke
during the first few uses. This is the normal

curing of the finish and will disappear after a
few uses of the appliance.

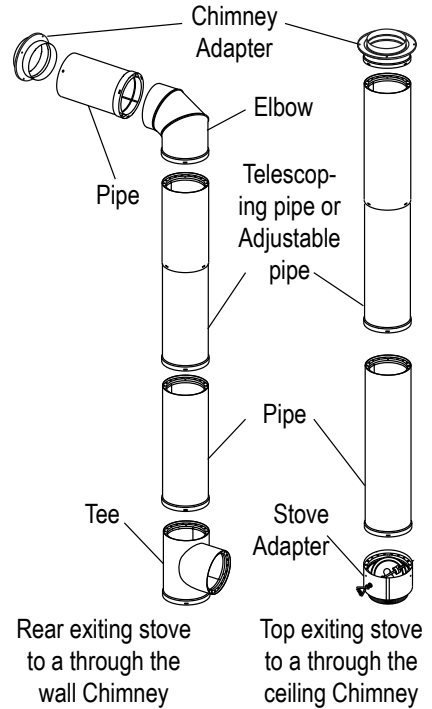


Figure 1

MOBILE HOMES: Solid fuel appliances
installed in mobile homes must be listed and
bear the label of a testing agency approved
by the Department of Housing and Urban
Development (HUD), and must be installed
exactly in accordance with the manufacturer's
installation instructions. DuraVent's DVL
stovepipe complies with the requirements
for "mobile home" use on HUD approved
appliances- Refer to stove manufacturer's
installation instructions. Those instructions will
also clearly state all clearance requirements
and approved installation configurations. **DO
NOT USE THIS PRODUCT IN A MOBILE
HOME** IF the stove to be installed is not listed
for use in a mobile home.

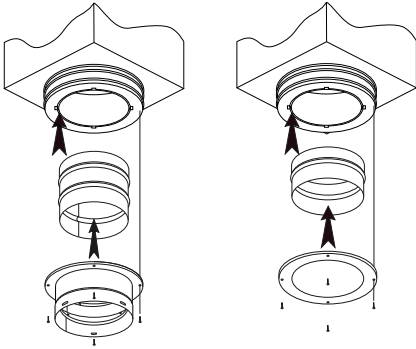


Figure 2

INSTALLATION:

1. Attaching DVL to a DuraVent Chimney

• **Trim Ring Adapters (Figure 2)**

Insert inner sleeve into outer sleeve (if applicable).

Slide Ring over lower portion of adapter.

Insert large end of adapter's inner sleeve over the chimney's inner sleeve in the support box or wall thimble.

Screw the Trim Plate to the support box or wall thimble.

Slip top piece of DVL pipe over adapter and screw together, you may need to pre-drill the hole in through the piece of pipe.

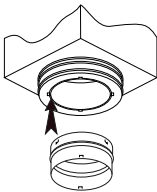


Figure 3

• **Clip designed adapter (Figure 3)**

Insert larger diameter of adapter around sleeve in the support box or wall thimble until clips are seated/locked.

Slip top piece of DVL pipe over adapter until clips are seated/locked

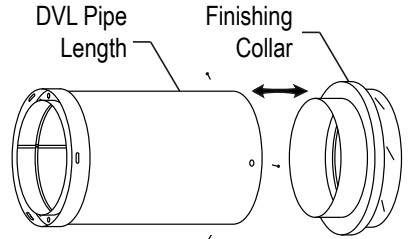


Figure 4

2. Attaching DVL to a Finishing Collar (Figure 4)

Slide first piece of DVL pipe over the inner sleeve of the Finishing Collar and secure with screws, you may need to pre-drill the hole through the piece of pipe.

3. Pipe

Overlap sections

- Pipe section overlap $\frac{3}{4}$ "

(3) screws at each connection (#8 x $\frac{3}{8}$ " screw) equally spaced.

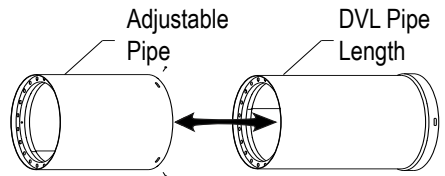


Figure 5

4. Adjustable Pipe (Figure 5)

Slide Adjustable Pipe over a straight length of pipe

Screw Adjustable pipe to mating pipe to lock pipe to desired length

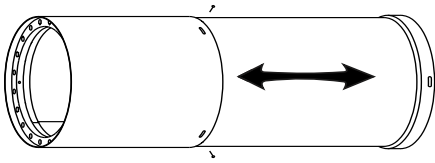


Figure 6

5. Telescoping Pipe (Figure 6)

Slide upper section of pipe onto lower section of pipe until desired length is obtained. Screw Telescoping pipe to lock pipe to desired length.

6. Elbows

Elbows can be used anywhere in-line. Elbows are adjustable.

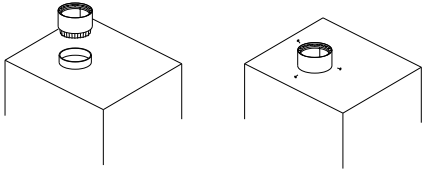


Figure 7

7. Connection to stove

• **Round outlets (Figure 7)**

If the inner sleeve of the pipe fits into the stove collar no adapter is needed
 If the inner sleeve of the pipe almost fits into the stove collar then crimp the inner sleeve enough to fit into the stove collar
 If the stove collar is too small for the inner sleeve of the pipe to fit into then use the DVL adapter to connect to stove collar
 Adapter comes with or without damper section
 On rear exiting stoves it is recommended to use a Tee not a 90 degree elbow

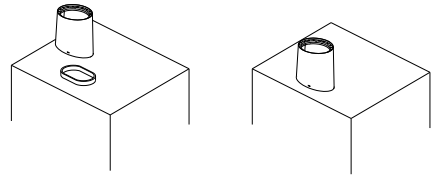


Figure 8

• **Oval outlets (Figure 8)**

Use a piece of string to measure the distance around the stove collar (Circumference)
 If the string measures 19" or a little more then use 6" stove pipe
 If the string measures 22" or a little more then use 7" stove pipe
 If the string measures 25" or a little more then use 8" stove pipe
 Use the DVL 12" adjustable section and field ovalize it to match the shape of the oval outlet on the stove.

MAINTENANCE:

When wood is burned slowly, it produces tar and other organic vapors, which combine with expelled moisture to form creosote. The creosote vapors condense in the relatively cool flues of a slow burning fire. As a result, creosote residue accumulates on the flue lining. When ignited, this creosote makes an extremely hot fire.

CLEANING:

1. Double wall connector pipe must be installed so that access is provided for inspection and cleaning.
2. The connector and chimney should be inspected at least once every month during the heating season to determine if a creosote

or soot has built up. If creosote or soot has accumulated, it should be removed to reduce the risk of chimney fire.

3. Have your connector and chimney cleaned by a professional chimney sweep if you have doubts about your ability to clean it. Use a plastic, wood or flexible steel brush.

4. When burning Coal clean the chimney thoroughly within 48 hours of shutting down the stove for the season. Check the chimney lining for sulfuric acid corrosion regularly.

5. Do not use chemical chimney cleaners. Their use does not eliminate the need for mechanical cleaning and they may be highly corrosive.

6. If a flue fire occurs, close all appliance draft openings and call your Fire Department. Do not use the chimney again until it is inspected for possible damage.

M&G DURAVENT WARRANTY

M&G DuraVent, Inc. ("DuraVent") provides this limited lifetime warranty for all of its products to the original purchaser, with the exception of Ventinox (lifetime), DuraBlack (five years) and all Termination Caps (five years). Subject to the limitations set forth below, DuraVent warrants that its products will be free from substantial defects in material or manufacturing, if properly installed, maintained and used. This Warranty is non-transferable with the exception of Ventinox which is transferable from the original homeowner to the buyer of the home for a period of ten (10) years. This warranty does not cover normal wear and tear, smoke damage or damage caused by chimney fires, acts of God, or any product that was: (1) purchased other than from an authorized DuraVent dealer, retailer or distributor; (2) modified or altered; (3) improperly serviced, inspected or cleaned; or (4) subject to negligence or any use not in accordance with the printed materials provided with the product as determined by DuraVent. This limited lifetime warranty applies only to parts manufactured by DuraVent.

DuraVent provides the following warranties for its products: One Hundred Percent (100%) of the purchase price or MSRP at time of purchase, whichever is lower, for 15 years from the date of purchase, and Fifty Percent (50%) thereafter, except for the following limitations: Ventinox liner and components in wood, oil, wood pellet, and gas installations are warranted at One Hundred Percent (100%) for the lifetime of the original homeowner; Ventinox 316 liner and components for coal burning installations which are warranted One Hundred Percent (100%) for ten years; all Termination Caps and DuraBlack® are warranted at One Hundred Percent (100%) for five years, and at Ten Percent (10%) thereafter.

All warranty obligations of DuraVent shall be limited to repair or replacement of the defective product pursuant to the terms and conditions applicable to each product line. These remedies shall constitute DuraVent's sole obligation and sole remedy under this limited warranty. This warranty provides no cash surrender value. The terms and conditions of this limited lifetime warranty may not be modified, altered or waived by any action, inaction or representation, whether oral or in writing, except upon the express, written authority of an executive officer of DuraVent.

VENTINOX WARRANTY CONDITIONS

Liner and Component warranties contained herein are subject to the following conditions: (1) The Liner and Components must be installed according to DV's installation instructions; (2) The Liner and Components are used only to line or reline chimneys venting residential appliances for which the liner was intended; and (3) documented annual inspection of the Liner and Components and maintenance as deemed necessary, beginning one year after the date of installation and continuing throughout the warranty period, by a Nationally Certified Chimney Sweep or VENTINOX® installer. The Liner and Components warranty is further subject to compliance with the following requirements throughout the warranty period: The chimney must have a chimney cap and chemical chimney cleaners must not be used when cleaning the Liner or Components. Plastic-bristle flue cleaning brushes are recommended. Com, biofuels, driftwood or other wood containing salt, preservative-treated lumber, plastic and household trash or garbage, or wood pellets containing such materials must not be burned in the appliance or fireplace. In case of a chimney fire, the chimney must be inspected and approved by a certified Chimney Sweep before reuse. After each annual inspection, maintenance, and cleaning, the certified Chimney Sweep must fill out and date the appropriate section of the warranty card provided with the chimney liner.

LIMITATIONS ON INTERNET SALES:

Notwithstanding any other terms or conditions of this limited lifetime warranty, DuraVent provides no warranty for the following specific products if such products are both: (a) purchased from an Internet seller; and (b) not installed by a qualified professional installer: DuraTech®, DuraPlus HTC®, PelletVent Pro®, FasnSeal®, and DuraVent's relining products including DuraLiner®, DuraFlex® 304, DuraFlex® 316, DuraFlex® Pro, DuraFlex® SW, and Ventinox®. For purposes of this warranty, a trained professional installer is defined as one of the following: licensed contractors with prior chimney installation experience, CSIA Certified Chimney Sweeps, NFI Certified Specialists, or WETT Certified Professionals.

DuraVent reserves the right to inspect defective product to determine if it qualifies for replacement under the terms of this limited lifetime warranty. All warranty claims must be submitted with proof of purchase. Labor and installation costs are not covered under this warranty. To obtain warranty service contact DuraVent promptly at DuraVent Warranty Service, 902 Aldridge Rd., Vacaville CA 95688, or call 800-835-4429.

WHERE LAWFUL, DuraVent DISCLAIMS ALL OTHER WARRANTIES, INCLUDING BUT NOT LIMITED TO IMPLIED WARRANTIES OF MERCHANTABILITY AND FITNESS FOR A PARTICULAR PURPOSE. IN NO EVENT WILL DuraVent BE LIABLE FOR INCIDENTAL, CONSEQUENTIAL, PUNITIVE OR SPECIAL DAMAGES OR DIRECT OR INDIRECT LOSS OF ANY KIND, INCLUDING BUT NOT LIMITED TO PROPERTY DAMAGE AND PERSONAL INJURY. DuraVent's ENTIRE LIABILITY IS LIMITED TO THE PURCHASE PRICE OF THIS PRODUCT. SOME STATES DO NOT ALLOW LIMITATIONS ON IMPLIED WARRANTIES, OR THE EXCLUSION OR LIMITATION OF INCIDENTAL OR CONSEQUENTIAL DAMAGES, SO THE ABOVE LIMITATIONS AND EXCLUSIONS MAY NOT APPLY TO YOU. THIS LIMITED WARRANTY GIVES YOU SPECIFIC LEGAL RIGHTS, AND YOU MAY ALSO HAVE OTHER RIGHTS THAT VARY FROM STATE TO STATE.

For the most up-to-date installation instructions, see www.duravent.com

M&G DuraVent, Inc. PO Box 1510 Vacaville CA 95696-1510
Manufactured in Vacaville CA and Albany NY

DuraVent
A member of  M&G Group

Customer Service Support 800-835-4429 707-446-4740 FAX www.duravent.com

DVL is a registered trademark of the M&G DuraVent, Inc.

All rights reserved. Made in the USA. M&G DuraVent is a member of M&G Group. ©2012

L114 09/2012