



# N4X Series

*Rugged, self-contained emergency lighting unit designed to perform in damp or harsh industrial environments*



Catalog Number	
Comments	Type

## Product Selector

Type	Model No.	Voltage	Total Output Watts			
			1 1/2 Hrs.	2 Hrs.	3 Hrs.	4 Hrs.
	<b>N4X2</b>	6	15	--	--	--
	<b>N4X4</b>	6	31	22	15	--
	<b>N4X7</b>	6	50	36	29	22
	<b>N4X14</b>	6	100	79	61	44
	<b>N4X7-12V</b>	12	50	36	29	22
	<b>N4X14-12V</b>	12	100	79	61	44
<b>(3) Options (add suffix to model number)</b>						
	<b>I</b>	Spectron self-testing/self-diagnostic electronics				
	<b>-0</b>	Unit supplied without lampheads <sup>(1)</sup>				
	<b>-1</b>	Unit supplied with one lamphead				
	<b>-L</b>	Shatter containment lamp option <sup>(2)</sup>				
	<b>-A31</b>	3-conductor cord - 120VAC				
	<b>-A32</b>	3-conductor cord - 277VAC				
<b>Accessories (order separately)</b>						
	<b>40G</b>	Wire guard				
	<b>GNXSB</b>	Matching remote lighting head - single <sup>(3)</sup>				
	<b>GNXSB</b>	Matching remote lighting head - single <sup>(3)</sup>				

(1) Not available with N4X2 unit.

(2) Protective lamp cover safely contains lamp fragments in the event of accidental breakage. Not for use in food processing/preparation areas or hospitals.

(3) Supplied with mounting plate. Specify voltage and wattage when ordering. Example **GNXSB 0618**

## Features

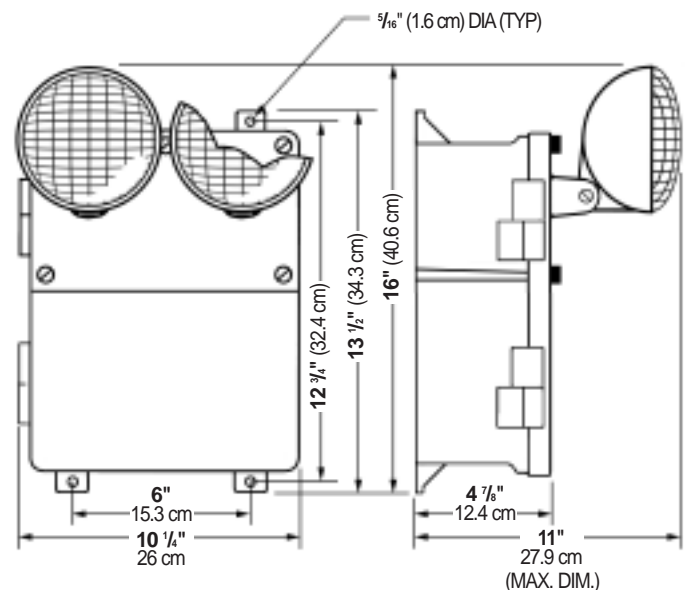
- Gasketed construction
- Corrosion resistant hardware
- Grey thermoplastic polycarbonate case
- Available in 6- or 12-volt versions
- Fully adjustable lampheads
- Maintenance-free battery
- Capacities up to 100W
- Matching remote fixture
- 120/277VAC operation standard
- Fully automatic, solid-state charger
- Low-voltage battery disconnect
- Transformer isolation protection
- Test switch and AC-On light
- 90 minute operation
- Available with Spectron® self-testing/self-diagnostic electronics
- Temperature range: 10°C to 40°C (50°F to 104°F)
- UL 924 Listed (Emergency Lighting)

## Alternate Lamps

To order alternate lamps on the fixture, suffix the model number with the catalog string from the GNX series.

**Example: N4X4-GNXSB0612**

## Dimensions



Hubbell Lighting, Inc.

**Construction**

**Housing and Cover:** Sealed and gasketed construction. Case and cover constructed of thermoplastic polycarbonate. Battery compartment vented for safety.

**Access:** Hinged full front cover with stainless steel hardware

**Lamp Assemblies:** Lamp housings and swivel assemblies constructed of flame-rated, UV stable thermoplastic. The lamp terminals are coated to resist corrosion and the lamp head swivel is sealed from the environment.

**Finish Color:** Gray

**Illumination**

**Lamp type:** Incandescent PAR 36 sealed beam type

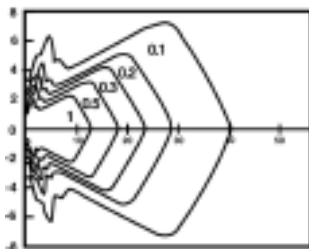
**Lamp Voltage:** 6- or 12-volt

**Lamp Wattage:** 7.2W (6V models), 9.0W (12V models)

**Rated Lamp Life:** 100 hours

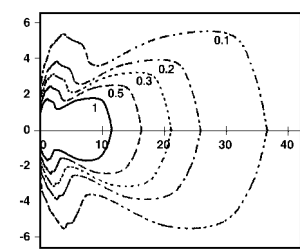
**Photometrics**

6-volt, 7.2 watt SBT lamp



Feet from lamp (measured on axis)

12-volt, 9.0 watt SBT lamp



Feet from lamp (measured on axis)

(horizontal isofootcandle distribution)

**Remote Fixtures**

Standard matching remote fixtures are GNX Series. Other remote head and fixture types are also available.

**Installation**

**Unit Wall Mounting:** Units are provided with pre-drilled mounting flanges for wall or beam mounting. The design permits top conduit entry for power and remotes. Drilling templates are provided.

**Wiring:** All AC and DC connections made inside of housing using standard connection hardware. Connections for remote fixtures are fused.

**Electronics**

**Input:** 120/277VAC, 60 Hz (standard)

**Built in-Protection:** Transformer isolation and low voltage battery disconnect

**Charger:** Fully automatic, constant voltage, current limited

**Transfer:** Electric relay

**Remote Lamp Connection:** Fused leads

**Battery Recharge Cycle:** Per UL time standards

**Electronics (cont.)**

**Test Means:** Sealed test switch

**Indicators:** Sealed AC-ON indicator

**Battery**

**Type:** Maintenance-free lead-acid

**Operating Temperature Range**

**All models:** 10° to 40°C (50°F to 104°F)

**Power Consumption**

**All Models:** 20 watts maximum

**Compliances**

UL 924 and NFPA-101 (all models)

**Warranty**

**Standard Models:**

**Unit and Electronics:** 3 years full

**Battery:** 3 years full, 3 years pro-rata (6 years total)

**Spectron Models:**

**Unit and Electronics:** 5 years full

**Battery:** 5 years full, 5 years pro-rata (10 years total)

**Suggested Specifications**

Emergency lighting shall be provided by a Dual-Lite N4X Series model \_\_\_\_\_ designed for installation in damp or corrosive environments. Construction shall be of thermoplastic polycarbonate in gray finish with matching hinged front cover. Unit battery compartment shall be vented for safety. Units shall be provided with pre-drilled mounting flanges for wall or beam mounting. The design will permit top conduit entry for power and remotes. Drilling templates shall be provided. Unit design will allow universal 120/277VAC, 60 Hz operation standard. Total unit output capacity shall be \_\_\_ watts. Emergency illumination will be provided by (one)(two) unit mounted (6-volt, 7.2 watt)(12 volt, 9 watt) sealed beam type lighting heads. Lamp housings and swivel assemblies shall be constructed of flame-rated, UV stable thermoplastic in a gray finish. The lamp terminals will be coated to resist corrosion and the lamp head swivel shall be sealed from the environment.

Emergency components will include a fully automatic battery charger, a (6-volt)(12 volt) maintenance-free lead-acid battery, a sealed AC-On indicator light and test switch. The unit charger will be capable of recharging the battery within acceptable UL time standards. Emergency operation must be provided for a minimum of \_\_\_ hours. Connections for remote lighting fixtures shall be fused. Units must comply with all UL 924 and NFPA 101 Life Safety Code requirements. Dimensions to be 16" (40.6 cm) high x 10.25" (26.0 cm) wide by 4.875" (12.4 cm) deep.

Optional equipment will include: \_\_\_\_\_