

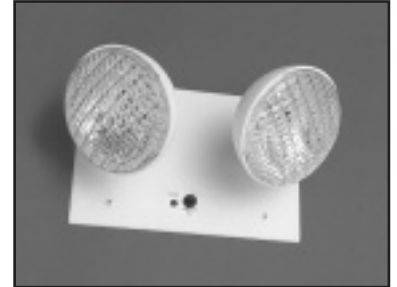
DUAL LITE

EZ-2R™ Series

Decorative emergency lighting unit designed for fast, easy, recessed installation in wall or ceiling.



Catalog Number	
Comments	Type



Recessed Wall



Recessed Ceiling

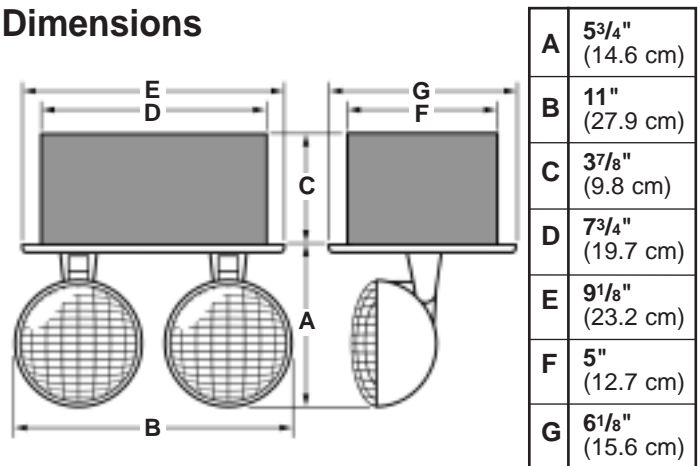
Features

- Completely self-contained
- Easy recessed installation in wall or ceiling
- All metal recessed housing
- Flame-rated, white thermoplastic lamp housing and mounting plate
- Fully adjustable, glare-free lighting heads
- Compact, low-profile design
- Fully automatic 90-minute operation
- Maintenance-free battery
- Fully automatic, solid-state charger
- Universal transformer for 120/277VAC operation
- Automatic battery protection (LVD)
- Test switch
- AC indicator light
- Spectron self-testing/self-diagnostic model available
- Operating Temperature Range: 20° to 30°C (68°F to 86°F)
- UL 924 Listed (Emergency Lighting)

Product Selector

EZ-2R	Two-headed recessed decorative unit
EZ-2R_I	Spectron self-testing/self-diagnostic unit
Accessories (order separately)	
Description	Order Model No.
Troffer mounting kit (suspended ceilings)	F-CBM
Wire guard	WGEL

Dimensions



Hubbell Lighting, Inc.

Specifications

Construction

Unit: Lamp housings and back plate constructed of flame-rated, UV stable, thermoplastic

Finish: Textured white

Back Box: Heavy gauge galvanized sheet metal

Illumination

Lamp Type: Incandescent

Lamp Voltage - EZ-2R Model: 6 volts, 5.4 watts

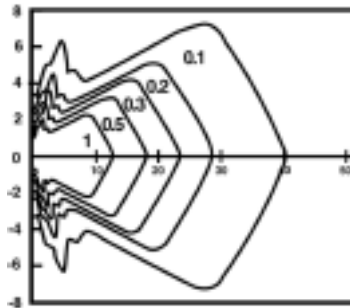
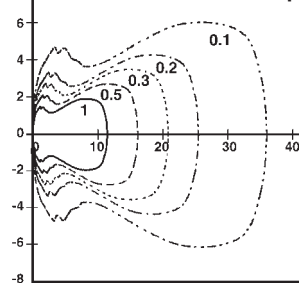
Lamp Voltage - EZ-2R \bar{I} Model: 6 volts, 7.2 watts

Lamp Wattage: Rated Lamp Life: 100 hours

Photometrics

6V, 5.4W Incandescent Lamp

6V, 7.2W Incandescent Lamp



(Horizontal Isofootcandle Distribution)

Installation

Unit Mounting: EZ-2R Series units are designed for recessed mounting in standard construction walls and ceilings as well as suspended type ceilings. The unit's metal back box may be installed by nailing to wall studs or ceiling joists, suspended from rigid conduit or ceiling grid mounted by means of troffer mounting accessory kit (F-CBM). Knockouts (7/8") are provided for side, end or rear surface conduit entry.

Lamphead/electronics mounting plate affixes to back box by means of four machine screws.

Wiring: Pre-stripped AC input leads provided. All AC connections made inside unit back box.

Operating Temperature Range

All models: 20° to 30°C (68°F to 86°F)

Electronics

Input: 120/277VAC, 60 Hz. (standard)

Built-in Protection: Transformer isolation and low battery voltage disconnect

Charger: Solid-state, constant voltage, current limited type

Transfer: Solid-state design

Battery Recharge Cycle: Per UL time standards

Test Means: Integral test switch

Indicators: AC-On indicator

Battery

Type: Maintenance-free lead-acid

Power Consumption

Maximum: 7.5 watts at 120 or 277VAC

Compliances

UL 924 (all models)

NFPA-101 (all models)

Warranty

EZ-2R Model:

Unit and Electronics: 3 years full

Battery: 3 years full, 3 years pro-rata (6 years total)

EZ-2R \bar{I} Model:

Unit and Electronics: 5 years full

Battery: 5 years full, 5 years pro-rata (10 years total)

Suggested Specification

Self-contained emergency lighting unit shall be Dual-Lite recessed model (EZ-2R)(EZ-2R \bar{I}). Unit construction shall consist of a heavy-gauge, all metal back box and injection-molded thermoplastic lamp heads and mounting plate in textured white finish. Unit shall be capable of recessed installation in walls or ceiling. Lamp housings shall be fully directional. Lighting shall be provided by two 6-volt, (5.4)(7.2)-watt sealed-beam type lamps of glare-free design. Emergency components will include a solid-state, constant voltage, current limited type battery charger; a maintenance-free, lead-acid battery; an AC-On indicator light; and test switch. The unit charger will be capable of recharging the battery within acceptable UL time standards. Emergency operation shall be provided for a minimum of 90 minutes. Units must comply with all UL 924 and NFPA 101 Life Safety Code requirements. Dimensions to be 6¹/₈" (15.6 cm) high x 11" (27.9 cm) wide x 5³/₄" (14.6 cm) deep.