



Kitchen - Tara Ultra

POT FILLER Cold water valve - Brushed Durabron

Article number: 30 805 875-28

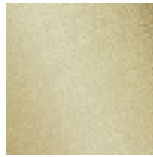


- 19-5/8" Projection
- Swiveling spout
- Laminar stream
- One water inlet, no mixing function
- Water flow rate limited to max. 1.5 gpm
- Two valves for on / off function
- lead-free

**Codes & Standards**

- NSF/ANSI 372
- California Energy Commission (CEC)
- ASME A112.18.1/CSA B125.1
- NSF/ANSI/CAN 61

- Fittings group in compliance with DIN 4109: 1



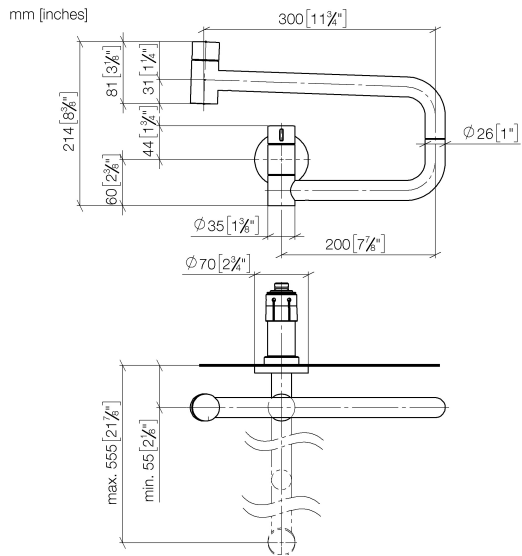
Brushed Durabron

Accessory is required for this item.



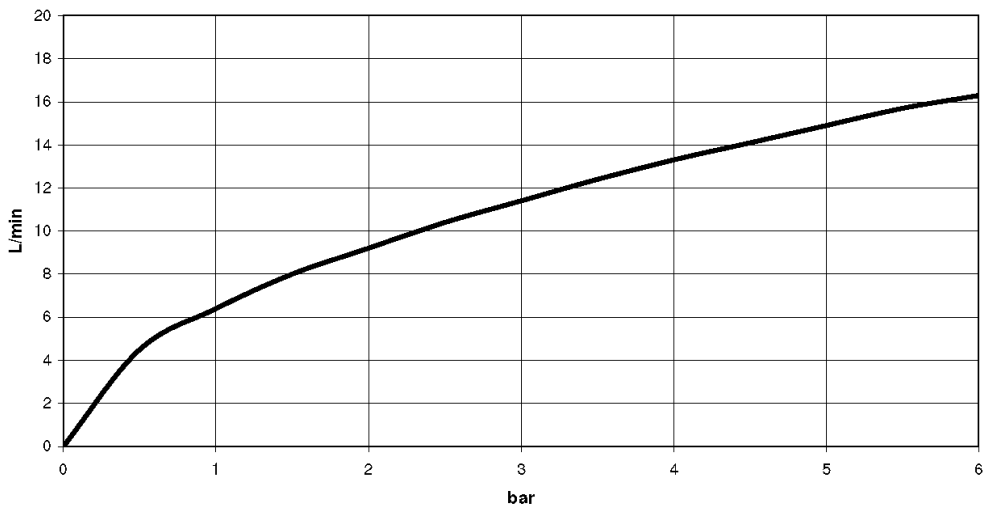
Kitchen - Tara Ultra  
POT FILLER Cold water valve - Brushed Durabronz  
Article number: 30 805 875-28

### Dimensional drawing



All dimensions in mm / inch = mm x 0,0394

### Flow rate chart





Kitchen - Tara Ultra  
POT FILLER Cold water valve - Brushed Durabross  
Article number: 30 805 875-28

### Other surface finishes



polished chrome  
30 805 875-00



platinum matte  
30 805 875-06

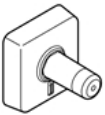


platinum  
30 805 875-08



Dark Platinum matte  
30 805 875-99

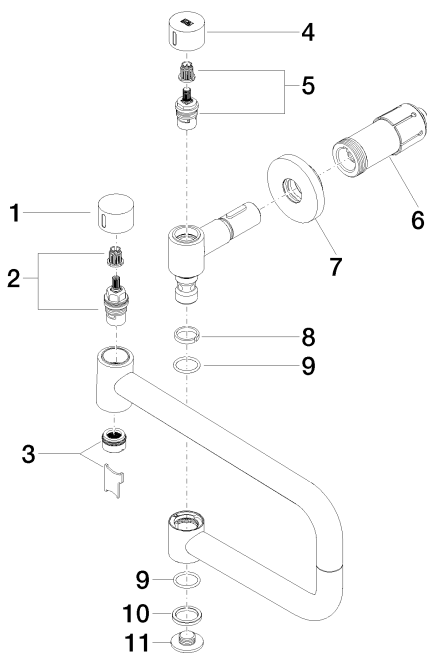
More custom finish options are available via special production (xTra Service). Please see our finish matrix for availability and pricing or contact a Dornbracht representative.



35 087 970-90 0010  
POT FILLER Rough-in wall  
elbow -

Kitchen - Tara Ultra  
 POT FILLER Cold water valve - Brushed Durabross  
 Article number: 30 805 875-28

Spare parts list



Number	Item Number	Designation	Number of units
1	09 20 62 025-28	Handle Ø 35 x 23 mm - Brushed Durabross	1
2	90 90 03 146 00 90	Upper part counter-clockwise closing 1/2" -	1
3	90 23 01 026 11-28	Aerator anti-theft Ø 23,5 x 13 mm, 1.5 gpm - Brushed Durabross	1
4	09 20 62 027-28	Handle Ø 35 x 23 mm - Brushed Durabross	1
5	90 90 03 171 00 90	top	1
6	90 30 01 213 00 90	Wall connection Ø 38 x 84 mm -	1
7	90 27 87 039 00-28	Escutcheon Ø 70 x 10 mm - Brushed Durabross	1
8	09 28 10 136 90	Ring Ø 25 x 22,4 x 1 mm -	1
9	09 14 10 015 90	O-Ring EPDM 70 21,5 x 2,5 mm -	2
10	09 28 10 139 90	Ring Ø 28,9 mm -	1
11	09 21 02 028-28	Cover Ø 32 x 11 mm - Brushed Durabross	1