

## E Lite® Plastic Equipment Pad

### Description

E-Lite® is a polypropylene plastic mounting pad designed to support HVAC outdoor units and other outdoor equipment. These pads are a great environmentally friendly alternative to concrete equipment pads, thanks to the recycled content and low raw material usage when formed. The rugged design and optimized rib-pattern provide for excellent support on soil and gravel terrain. Available in both 2" and 3", depending on local building code requirements.

### Application

- HVAC outdoor units
- Installation: pad should be placed on compacted level soil, gravel, or harder surfaces, including but not limited to concrete or asphalt.

### Features

- Lightweight, durable, and exceptionally strong
- Textured top surface to reduce slippage
- Concrete gray color
- Unaffected by UV exposure or extreme weather
- Drillable for securing unit ( $\frac{1}{4}$  x 1- $\frac{1}{4}$ " Tapcon® recommended)

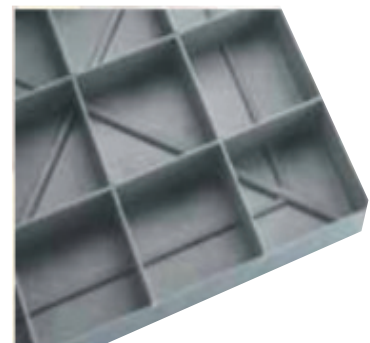
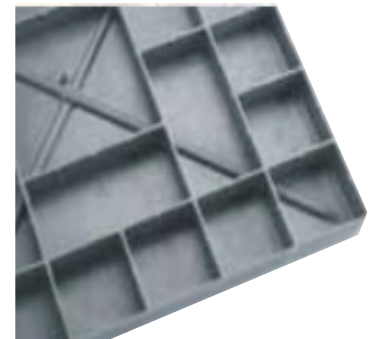
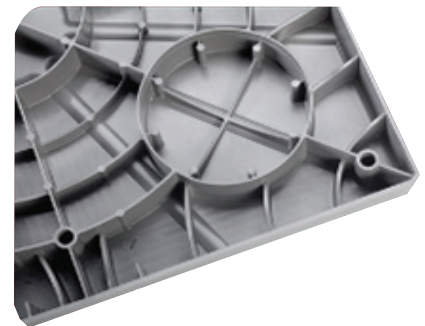
### Specifications

- 98% recycled, injection molded polypropylene
- Recommended temperature range: -48°F to 180°F
- Ignition temperature: 725 °F, flash ignition temperature: 698°F
- Tested per ASTM C67 (flawless performance under 25-cycle testing regimen)
- Tested per ASTM D2299. Does not crack, flake, or warp when subjected to...
  - R-22 or R-134a Refrigerant
  - Compressor oil
  - Salt solution (20% by volume)
  - Synthetic canine urine

**Made in USA by DiversiTech**

### Warranty

Limited Lifetime Warranty



## General Specifications

### 2" Thick Pads

CATALOG NUMBER	SIZE (IN.)	EST. ALLOW. LOAD	QTY. PER PALLET	PAD WT.
EL2424-2	24x24x2	840 LBS	44	7 LBS
EL2430-2	24x30x2	960 LBS	22	9 LBS
EL2436-2	24x36x2	1080 LBS	22	11 LBS
EL2626-2	26x26x2	920 LBS	22	8 LBS
EL3030-2	30x30x2	1080 LBS	22	11 LBS
EL3036-2	30x36x2	1200 LBS	22	13 LBS
EL3232-2	32x32x2	1160 LBS	22	13 LBS
EL3244-2	32x44x2	1400 LBS	22	17 LBS
EL3434-2	34x34x2	1240 LBS	22	14 LBS
EL3636-2	36x36x2	1320 LBS	22	16 LBS
EL3640-2	36x40x2	1400 LBS	22	18 LBS
EL3648-2	36x48x2	1560 LBS	22	29 LBS
EL3842-2	38x42x2	1480 LBS	22	19 LBS

### 3" Thick Pads

CATALOG NUMBER	SIZE (IN.)	EST. ALLOW. LOAD	QTY. PER PALLET	PAD WT.
EL1838-3	18x38x3	1000 LBS	32	16 LBS
EL2436-3	24x36x3	840 LBS	16	19 LBS
EL2448-3	24x48x3	1320 LBS	32	14 LBS
EL3030-3	30x30x3	1080 LBS	16	20 LBS
EL3232-3	32x32x3	1160 LBS	16	21 LBS
EL3244-3	32x44x3	1400 LBS	16	30 LBS
EL3636-3	36x36x3	1320 LBS	16	28 LBS
EL3640-3	36x40x3	1400 LBS	16	31 LBS
EL3648-3	36x48x3	1560 LBS	16	36 LBS
EL3842-3	38x42x3	1480 LBS	16	33 LBS
EL3870-3	38x70x3	2040 LBS	16	36 LBS
EL4040-3	40x40x3	1480 LBS	16	34 LBS
EL4558-3	45x58x3	1940 LBS	16	33 LBS
EL4848-3	48x48x3	1800 LBS	16	29 LBS
EL5042-3	50x42x3	1720 LBS	16	28 LBS
EL5060-3	50x60x3	2080 LBS	16	40 LBS
EL5070-3	50x70x3	2280 LBS	16	47 LBS
EL5252-3	52x52x3	1960 LBS	16	48 LBS
EL5658-3	56x58x3	2160 LBS	16	43 LBS

To utilize maximum load rating, the weight should be evenly distributed across the pad surface