

## WHAT'S IN THE BOX:



Soft-close hinges reduce noise from slamming.



Extra Bumpers included in three colors to customize and match your decor; prevent the seat from shifting on the bowl.



Easily clean, quick installation.

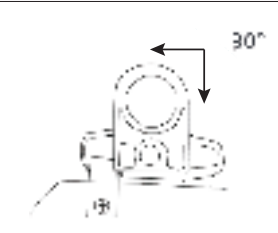


Durable Veneer coating makes it easy to clean and maintain.

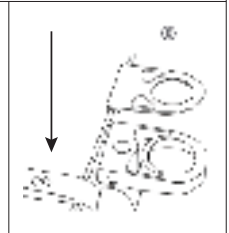
## SETUP:



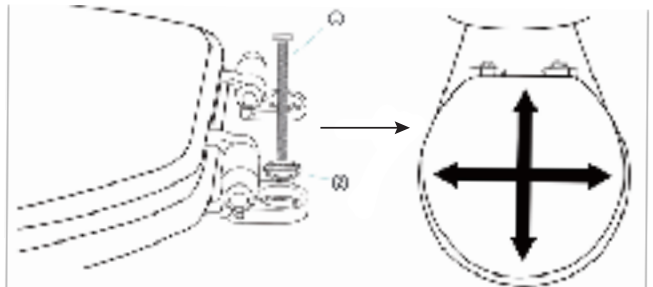
STEP 1: Put in the stopper. (A)



STEP 2: Rotate the hinge 90°, and straighten hard.



STEP 3: Put the pad into the hinge. (C)

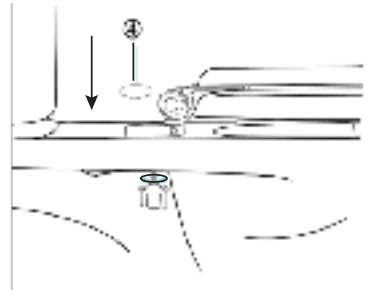
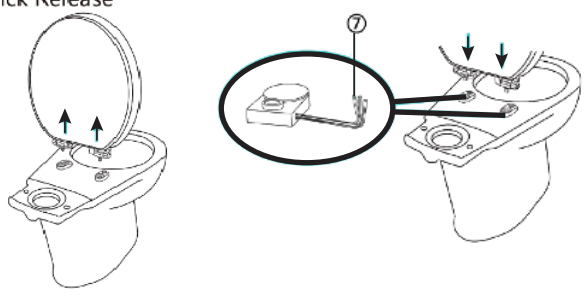


STEP 4: Install the accessories (D)(E) as shown in the figure  
STEP 5: Adjust the toilet lid to be compatible with the toilet

**TIPS:** If hinge is too loose or too tight, use mini hex wrench to tighten the small holes on both sides of the hinge.

Quick Release

Release



STEP 6: Tighten the nut as shown  
STEP 7: Close the hinged cover.