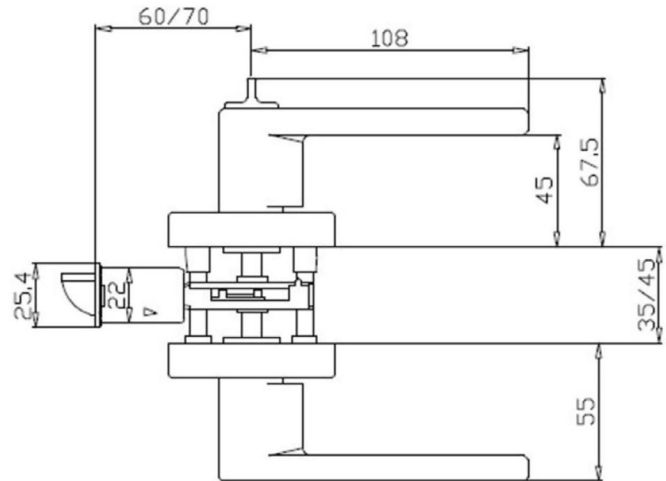
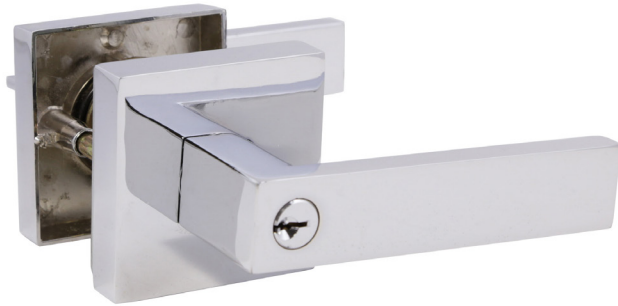


### Karsen Entry Lever Polished Chrome



## SPECIFICATIONS

<b>MATERIAL CONSTRUCTION:</b>	Zinc	<b>KEYWAY:</b>	KW
<b>LOCK FUNCTION:</b>	Entry Knob/Lever	<b>REMOVABLE CORE:</b>	No
<b>DEADBOLT FUNCTION:</b>	N/A	<b>LATCH FACEPLATE I:</b>	Round Corner
<b>EXTERIOR MAX PROJECTION:</b>	2.17"	<b>LATCH BACKSET:</b>	Adj; 2-3/8" - 2-3/4"
<b>INTERIOR MAX PROJECTION:</b>	2.66"	<b>LATCH TYPE:</b>	2 Way (fixed faceplate)
<b>KNOB VS. LEVER:</b>	Lever	<b>LATCHBOLT THROW DISTANCE:</b>	0.5"
<b>KNOB DIMENSIONS:</b>	N/A	<b># PINS IN CYLINDER:</b>	5
<b>LEVER LENGTH:</b>	4.25"	<b>ANTI-BUMP PIN INSTALLED?:</b>	Yes
<b>ROSE DIMENSIONS:</b>	2.76" H x 2.76" W x 2.76" D	<b># KEYS INCLUDED:</b>	2
<b>ROSETTE / ESCUTCHEON SHAPE:</b>	Square	<b>SPINDLE TYPE:</b>	Square
<b>CROSS BORE:</b>	2-1/8" (54mm)	<b>MOUNTING HARDWARE INCLUDED:</b>	Yes
<b>EDGE BORE:</b>	1" (25mm)	<b>TOOLS NEEDED FOR INSTALLATION:</b>	Phillips Screwdriver
<b>HANDLING:</b>	Reversible	<b>ASSEMBLED WEIGHT:</b>	2.0 lbs.
<b>REKEYABLE?:</b>	Yes		

**WARRANTY:** 5 year limited warranty  
5 year limited finish

**ANSI CERTIFICATION:** Grade 3  
**BHMA GRADE:** 3  
**FIRE RATED:** No  
**ADA COMPLIANT:** No



<b>TYPE:</b>
<b>JOB:</b>
<b>ORDER CODE:</b>
<b>APPROVALS:</b>