



Design House is a registered brand of DHI Corp. Mequon, WI 53092
1-800-558-8700

DUAL HANDLE LAVATORY FAUCET

MODELS
548255-Polished Chrome
548263-Satined Nickel



Notes: The picture in this installation instruction is for reference only, pls refer to actual product in installation process.

PRODUCT SPECIFICATIONS

SPECIFICATIONS
Max. flow rate: 1.2 GPM (4,542 LPM) at 60 PSI
ASME A112.18.1/CSA B125
ANSI/NSF 61-9
3 hole installation
Chrome and Satined nickel finish

SPECIFICATIONS
Ceramic cartridges
Manufactured to include no more than 0.25% weighted average lead content on wetted surfaces

SAFETY INFORMATION

Please read and understand this entire manual before attempting to assemble, operate or install the product.

WARNING

- Protect your eyes with safety glasses when cutting or soldering water supply lines.

CAUTION

- If you solder the joints during installation of the faucet, the seats, cartridges, and washers must be removed before using a flame or the warranty will be voided on these parts.
- Cover the sink drain to avoid losing parts.

PREPARATION

Before beginning assembly of product, make sure all parts are present. Compare parts with package contents list and hardware contents. If any part is missing or damaged, do not attempt to assemble the product. Contact customer service for replacement parts.

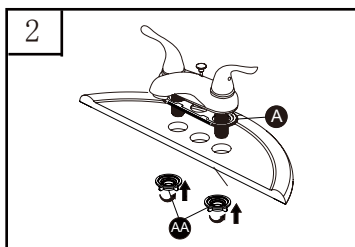
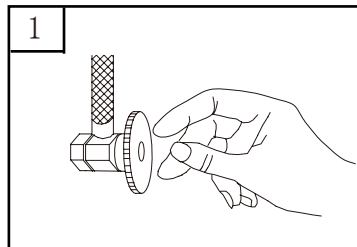
Estimated Assembly Time: 30 minutes

Tools Required for Assembly (not included): Adjustable Wrench, Groove Joint Pliers, Pipe Wrench, Phillips Head Screwdriver, and Supply Lines.

Installations may vary depending on how the previous faucet was installed. Supplies necessary for the installation of the faucet are not all included; however, they are available wherever plumbing supplies are sold.

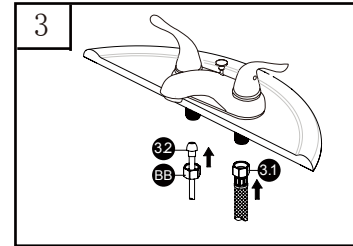
Prior to beginning installation, turn off the hot and cold water line turn on the old faucet to release built-up pressure. When installing the new faucet, hand tighten the connector nuts. **DO NOT OVERTIGHTEN.** Connections that are too tight will reduce the integrity of the system.

ASSEMBLY INSTRUCTIONS

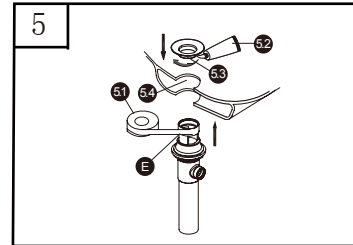


ASSEMBLY INSTRUCTIONS

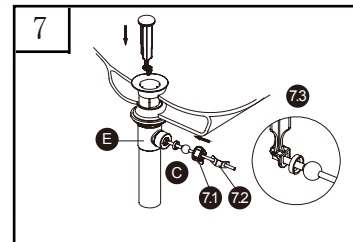
1. Turn off water at the supply valve under the sink or at the main water supply, disconnect the supply line, and remove old faucet. Clean and dry surface area where new faucet will be mounted.



3. Make connections to water lines. Use 1/2 in. IPS faucet connections (3.1) (not included) or use coupling nuts (BB) with 3/8 in. OD ball-nose riser (3.2) (not included). **HAND TIGHTEN. DO NOT OVERTIGHTEN.** Do not use PTFE pipe tape, plumber's putty, pipe dope or any other type of sealing compound on water inlet or threads. Additional compound is not necessary. A water tight seal between the thread inlet and supply tube is achieved by compression.

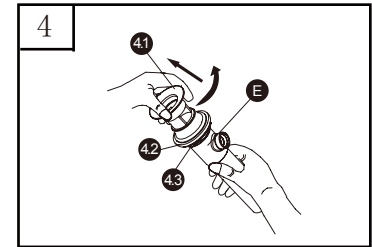


5. Add PTFE pipe tape (not included) (5.1) to the threads on the pop-up assembly (E). Add plumbers putty (5.2) (not included) to the underside of the drain flange (5.3) and press it into the drain hole (5.4). Remove any excess putty.

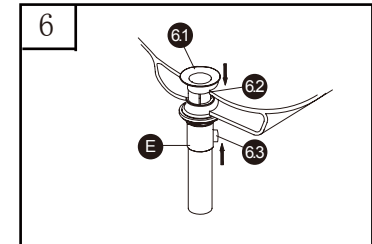


7. Unscrew the pre-assembled nut (7.1) from the pop-up assembly (E) and take off the pre-assembled spring clip (7.2) from the ball rod (C). (Please note: The pre-assembled white packing ring (7.3) must remain on the ball rod (C). Place the nut (7.1) on the ball rod (C). Insert the ball rod (C) into the side hole of pop-up assembly (E). Slide the nut (7.1) on and tighten securely.

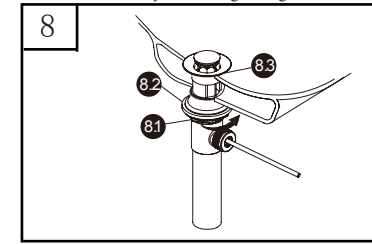
2. Place faucet (A) through mounting holes in sink. Secure faucet (A) to sink using mounting nuts (AA).



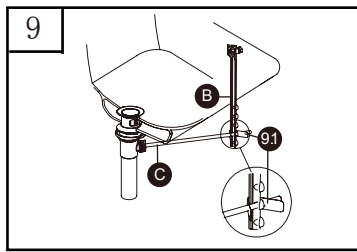
4. Remove preassembled flange (4.1) from pop-up assembly (E). Leave preassembled large black washer (4.2) and nut (4.3) on pop-up assembly (E).



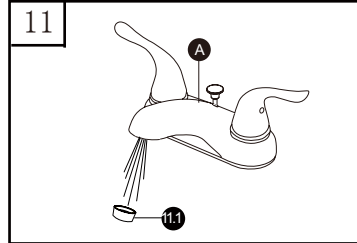
6. Insert thread end of pop-up assembly (E) up through drain hole (6.1) and attach flange (6.2) to pop-up assembly (E). Tighten the flange (6.2) until the gasket is tight against the underside of the sink. The preassembled fitting arm (6.3) for the pop-up assembly (E) should face the rear of sink after you finish tightening.



8. Thread preassembled locknut (8.1) from underside of sink until preassembled rubber washer (8.2) seats securely inside opening of sink (8.3). Tighten locknut securely by hand.



9. Place one end of spring clip (9.1) removed in step 7 on end of ball rod (C). Insert ball rod (C) across and through hole in lift rod strap (B). Secure other end-up assembly (E). Slide the nut (7.1) on and tighten securely.



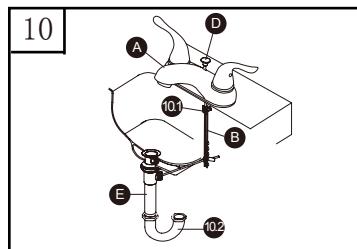
11. Important: After installation is completed, remove aerator (11.1) from faucet (A). Turn on water supply and allow both hot and cold water to run for at least one minute each. While water is running, check for leaks. Replace aerator (11.1). Tighten nuts slightly to stop minor leaks. If problems persist, refer to troubleshooting.

CARE AND MAINTENANCE

Clean periodically with a soft cloth. Avoid abrasive cleaners, steel wool, and harsh chemicals as these will dull the finish and void your warranty.

TROUBLESHOOTING

PROBLEM	POSSIBLE CAUSE	CORRECTIVE ACTION
Leaks underneath handle.	Bonnet has come loose or O-ring on cartridge is dirty or twisted.	<ol style="list-style-type: none"> 1. Move the handle to the OFF position. Unscrew the handle screw and remove the handle. 2. Tighten the bonnet by turning it clockwise. Move the cartridge stem to the on position. The leak should stop draining out from around the cartridge stem. 3. Shut off the water supply. Remove the bonnet by turning it counterclockwise. Lift out the cartridge valve. Inspect the larger O-ring on the cartridge bonnet and the smaller O-ring on the cartridge stem. Remove any debris from the O-rings. If either O-ring is twisted, straighten it out. If either O-ring is damaged, replace the cartridge by calling customer service. 4. Position the cartridge back into the faucet body. Make sure the ridges on the two sides of the bonnet onto the faucet body. The cartridge bonnet fit into the grooves on the two sides of the faucet body. Tightly screw the bonnet onto the faucet body. 5. Re-install the handle.
Water does not completely shut off.	Rubber valve seat is dirty, stuck, or broken.	<ol style="list-style-type: none"> 1. Shut off the water supply to the faucet that leaks. 2. Remove the handle on the problem side. Loosen the bonnet by turning it counterclockwise. Lift out the cartridge assembly. 3. Inspect the rubber valve seat in the faucet body. If there is debris or brass scrap on the surface of the seat, remove it. If the rubber seat is stuck tightly in the water inlet hole, push it gently with a fingertip so that it moves up and down smoothly. The spring (smaller end up) must be replaced underneath the valve seat. If the rubber valve seat is worn out or broken, replace the cartridge by calling customer service. 4. Replace the cartridge in the faucet body. Make sure that the ridges on the two sides of the bonnet onto the faucet body. The cartridge bonnet fit into the grooves on the two sides of the faucet body. Tightly screw the bonnet onto the faucet body. 5. Re-install the handle.



10. Insert faucet lift rod (D) through faucet (A) and into lift rod strap (B). Tighten preassembled thumbscrew (10.1). Connect pop-up assembly (E) to drain (10.2) (not included).

PROBLEM	POSSIBLE CAUSE	CORRECTIVE ACTION
Faucet leaks around aerator.	Aerator incorrectly fitted.	<ol style="list-style-type: none"> 1. Unscrew the aerator by turning it clockwise. Inspect the black rubber packing inside the aerator. The rubber packing should be flat. 2. Screw the aerator onto the spout end and tighten.
Improper water pattern.	Aerator dirty or small parts inside aerator improperly installed.	<ol style="list-style-type: none"> 1. Remove the aerator from the spout end by turning it clockwise. 2. Gently flush the small parts inside the aerator to clear away any debris. 3. Re-install the small parts as shown in the exploded diagram. Metal screens must be flat and plastic supporter must be straight. 4. Screw the aerator onto the spout end and tighten.

LIMITED LIFETIME WARRANTY

The distributor warrants to the original consumer purchaser this product to be free from defects in material and workmanship under normal use in residential applications. At its option, the Company will provide repair parts or replace defective product when the product is used in accordance with the manufacturer's specifications.

The distributor provides a limited warranty on the finish of this product to the original purchaser. At its option, the distributor will provide repair parts or replace defective product when the product is used in accordance with the manufacturer's specifications. Use of mild abrasive, abrasive or chemical cleaners may damage the finish of the faucet. We recommend cleaning your faucet with a soft cloth, moistened with water. Damage resulting from the use of abrasive or chemical cleaners SHALL VOID THIS WARRANTY.

This warranty is not applicable to any products or parts of products where damage is caused by use of non-genuine parts; is due to installation error, product misuse, negligence or faulty maintenance; or where the product is not installed according to local building codes.

This warranty excludes labor charges or damage incurred during installation, repair or replacement, and any indirect, incidental or consequential damages, losses, injury or costs of any nature. This warranty is in lieu of and excludes all other warranties, conditions and guarantees, whether expressed or implied, including without restriction those of merchantability or fitness of use. Liability under this warranty will not exceed the purchase price for the product claimed to be defective by the original consumer purchaser. Some states or provinces do not allow the exclusion or limitation of consequential damages so the above limitations or exclusions may not apply. This warranty gives you specific legal rights and you may also have other rights which vary from state to state, or province to province.

Inquiries regarding warranty claims can be directed to 1-800-558-8700, 8 a.m. - 5 p.m., CST, Monday - Friday.