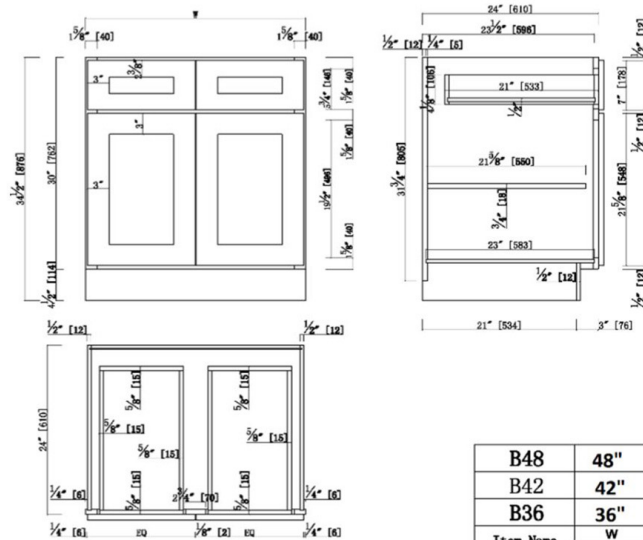


### Brookings Fully Assembled Shaker Base Kitchen Cabinet 48x34.5x24

Espresso



B48	48"	23.75"
B42	42"	20.75"
B36	36"	17.75"
Item Name	W	EQ

## SPECIFICATIONS

MATERIAL CONSTRUCTION:	Wood
WOOD SPECIES:	Maple
ASSEMBLED DIMENSIONS:	34.5" H x 48" L x 24" D
ASSEMBLED WEIGHT:	137 lbs.
KITCHEN CABINET TYPE:	Base
MOUNTING TYPE:	Floor Mount
CONSTRUCTION TYPE:	Face Frame
HINGE STYLE:	Soft Close
DOOR STYLE:	2 Wood shaker doors
NUMBER OF DRAWERS:	2
DRAWER DIMENSIONS 1:	4.17" H x 21" L x 20.5" D
DRAWER DIMENSIONS 2:	4.17" H x 21" L x 20.5" D
DRAWER DIMENSIONS 3:	N/A
DWR BOX MATERIAL:	Solid Wood
DWR CONSTRUCTION:	Dove Tail
DWR GLIDE:	STD Easy Glide
FAKE DWR QTY:	0
FAKE DWR LOCATION:	N/A

NUMBER OF SHELVES:	1
SHELF STYLE:	Flat
ADJUSTIBLE SHELVES:	Yes
SHELF ADJUSTIBILITY INCREMENTS:	2.5"
SHELF DIMENSIONS:	46.5" W x 21.625" D
SHELF THICKNESS:	0.75"
SHELF MATERIAL:	Plywood
FACE FRAME MATERIAL:	Solid Maple
SIDES MATERIAL:	Plywood
BOTTOM MATERIAL:	Plywood
BACK PANEL MATERIAL:	Plywood
BACK BRACE MATERIAL:	Wood
TOE KICK INSET WIDTH:	3

WARRANTY:	1-Year limited warranty
LEGAL FOR SALE IN CALIFORNIA:	Yes
CARB COMPLIANT:	CARB Phase 2
TSCA TITLE VI COMPLIANT:	Yes



TYPE:  
JOB:  
ORDER CODE:  
APPROVALS: