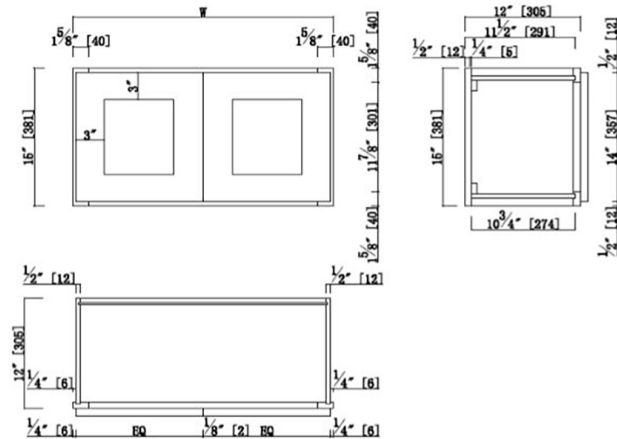


Brookings Fully Assembled Shaker Wall Kitchen Cabinet 33x15x12

Espresso



W3015
W3315
W3615

SPECIFICATIONS

| | | | |
|-------------------------------|-----------------------|--|-----------------|
| MATERIAL CONSTRUCTION: | Wood | NUMBER OF SHELVES: | 0 |
| WOOD SPECIES: | Maple | SHELF STYLE: | N/A |
| ASSEMBLED DIMENSIONS: | 15" H x 33" L x 12" D | ADJUSTIBLE SHELVES: | N/A |
| ASSEMBLED WEIGHT: | 30 lbs. | SHELF ADJUSTIBILITY INCREMENTS: | N/A |
| KITCHEN CABINET TYPE: | Wall | SHELF DIMENSIONS: | N/A" W x N/A" D |
| MOUNTING TYPE: | Wall Mount | SHELF THICKNESS: | N/A |
| CONSTRUCTION TYPE: | Face Frame | SHELF MATERIAL: | N/A |
| HINGE STYLE: | Soft Close | FACE FRAME MATERIAL: | Solid Maple |
| DOOR STYLE: | 2 Wood shaker doors | SIDES MATERIAL: | Plywood |
| NUMBER OF DRAWERS: | 0 | BOTTOM MATERIAL: | Plywood |
| DRAWER DIMENSIONS 1: | N/A | BACK PANEL MATERIAL: | Plywood |
| DRAWER DIMENSIONS 2: | N/A | BACK BRACE MATERIAL: | Wood |
| DRAWER DIMENSIONS 3: | N/A | TOE KICK INSET WIDTH: | N/A |
| DWR BOX MATERIAL: | N/A | | |
| DWR CONSTRUCTION: | N/A | | |
| DWR GLIDE: | | | |
| FAKE DWR QTY: | 0 | | |
| FAKE DWR LOCATION: | N/A | | |

| | |
|--------------------------------------|-------------------------|
| WARRANTY: | 1-Year limited warranty |
| LEGAL FOR SALE IN CALIFORNIA: | Yes |
| CARB COMPLIANT: | CARB Phase 2 |
| TSCA TITLE VI COMPLIANT: | Yes |



TYPE:
JOB:
ORDER CODE:
APPROVALS: