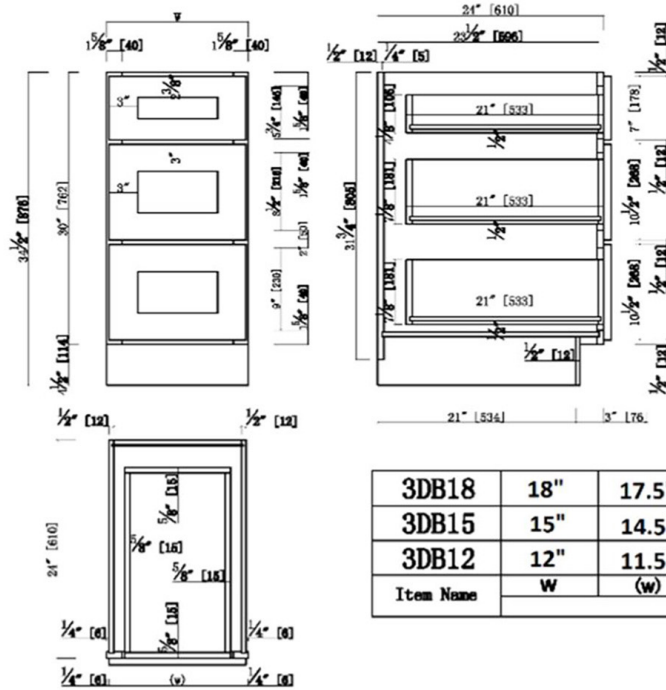


### Brookings Fully Assembled Shaker Drawer Base Kitchen Cabinet 12x34.5x24

White



<b>3DB18</b>	<b>18"</b>	<b>17.5"</b>
<b>3DB15</b>	<b>15"</b>	<b>14.5"</b>
<b>3DB12</b>	<b>12"</b>	<b>11.5"</b>
<b>Item Name</b>	<b>W</b>	<b>(w)</b>

## SPECIFICATIONS

<b>MATERIAL CONSTRUCTION:</b>	Wood
<b>WOOD SPECIES:</b>	Maple
<b>ASSEMBLED DIMENSIONS:</b>	34.5" H x 12" L x 24" D
<b>ASSEMBLED WEIGHT:</b>	62 lbs.
<b>KITCHEN CABINET TYPE:</b>	Drawer Base
<b>MOUNTING TYPE:</b>	Floor Mount
<b>CONSTRUCTION TYPE:</b>	Face Frame
<b>HINGE STYLE:</b>	N/A
<b>DOOR STYLE:</b>	0 wood shaker door
<b>NUMBER OF DRAWERS:</b>	3
<b>DRAWER DIMENSIONS 1:</b>	4.17" H x 21" L x 8.46" D
<b>DRAWER DIMENSIONS 2:</b>	7.12" H x 21" L x 8.46" D
<b>DRAWER DIMENSIONS 3:</b>	7.12" H x 21" L x 8.46" D
<b>DWR BOX MATERIAL:</b>	Solid Wood
<b>DWR CONSTRUCTION:</b>	Dove Tail
<b>DWR GLIDE:</b>	STD Easy Glide
<b>FAKE DWR QTY:</b>	0
<b>FAKE DWR LOCATION:</b>	N/A

<b>NUMBER OF SHELVES:</b>	0
<b>SHELF STYLE:</b>	N/A
<b>ADJUSTIBLE SHELVES:</b>	N/A
<b>SHELF ADJUSTIBILITY INCREMENTS:</b>	N/A
<b>SHELF DIMENSIONS:</b>	N/A" W x N/A" D
<b>SHELF THICKNESS:</b>	N/A
<b>SHELF MATERIAL:</b>	N/A
<b>FACE FRAME MATERIAL:</b>	Solid Maple
<b>SIDES MATERIAL:</b>	Plywood
<b>BOTTOM MATERIAL:</b>	Plywood
<b>BACK PANEL MATERIAL:</b>	Plywood
<b>BACK BRACE MATERIAL:</b>	Wood
<b>TOE KICK INSET WIDTH:</b>	3

<b>WARRANTY:</b>	1-Year limited warranty
<b>LEGAL FOR SALE IN CALIFORNIA:</b>	Yes
<b>CARB COMPLIANT:</b>	CARB Phase 2
<b>TSCA TITLE VI COMPLIANT:</b>	Yes



TYPE:  
JOB:  
ORDER CODE:  
APPROVALS: