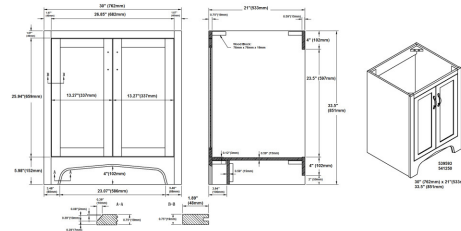
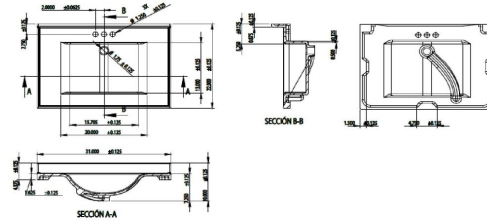


Espresso

Ventura Unassembled 2-Door Vanity with Cabinet with Cultured Marble Vanity Top, 31"



SPECIFICATIONS

MATERIAL CONSTRUCTION:	Wood/Cultured Marble	TOE KICK INSET WIDTH:	6.1"
ASSEMBLY REQUIRED:	Yes	BACK PANEL MATERIAL:	Particle Board
ASSEMBLED DIMENSIONS:	38" H x 31" L x 22" D	BACK BRACE MATERIAL:	Particle Board
ASSEMBLED WEIGHT:	81.8 lbs.	FAUCET TYPE:	N/A
TOOLS NEEDED FOR INSTALLATION:	Screwdriver	NUMBER OF MOUNTING HOLES:	3
CONSTRUCTION TYPE:	Face Frame	BOWL MATERIAL:	Cultured Marble
HINGE STYLE:	Concealed	BACK SPLASH INCLUDED:	Yes
DOOR STYLE:	2 Pine+MDF Shaker Doors	COLOR:	Solid White
DRAWER STYLE:	N/A	NUMBER OF BOWLS:	1
GLIDE STYLE:	N/A	BOWL DIMENSIONS:	7" H x 20" W x 13" D
FAKE DWR STYLE:	N/A	BOWL SHAPE:	Rectangle
DWR #1 DIMENSIONS:	N/A	SINK THICKNESS:	N/A
DWR CONSTRUCTION:	N/A	MOUNTING TYPE:	Integrated
SHELF STYLE:	N/A	OVERFLOW HOLE:	Yes
SHELF ADJUSTABILITY INCREMENTS:	N/A	WARRANTY:	1-Year limited warranty
SHELF MAX WEIGHT CAPACITY:	N/A	CARB COMPLIANT:	CARB Phase 2
SHELF DIMENSIONS:	N/A	LEGAL FOR SALE IN CALIFORNIA:	Yes
SHELF THICKNESS:	N/A	TSCA TITLE IV COMPLIANT:	Yes
SHELF MATERIAL:	N/A		
FRAME STYLE:	N/A		
FACE FRAME MATERIAL:	Pine		
SIDES MATERIAL:	Particle Board		
BOTTOM MATERIAL:	Particle Board		



TYPE:
JOB:
ORDER CODE:
APPROVALS: