

Deck Plate

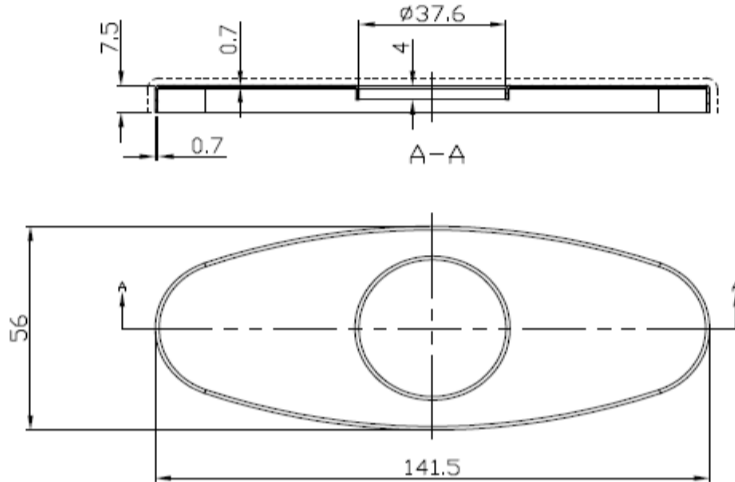


Specifications

Description	Deck Plate
Material	Zinc alloy
Dimension	5.57*2.21*0.32
Hole Dia	1.48



Dimensions



Warranty & Compliances

Warranty	Lifetime Limited Warranty, Lifetime Limited Finish Warranty
IAPMO/UPC	CUPC compliant
ASME	ASME A112.18.1/ CSA B125.1



Order Codes & Finishes/Colors

Satin Nickel (US15)	547836
Polished Chrome	547844
Oil Rubbed Bronze	



Type:
Job:
Order Code:
Approvals:

Design House reserves the right to make changes in materials, specifications & models at any time. Design House also reserves the right to discontinue product without notice or obligation.