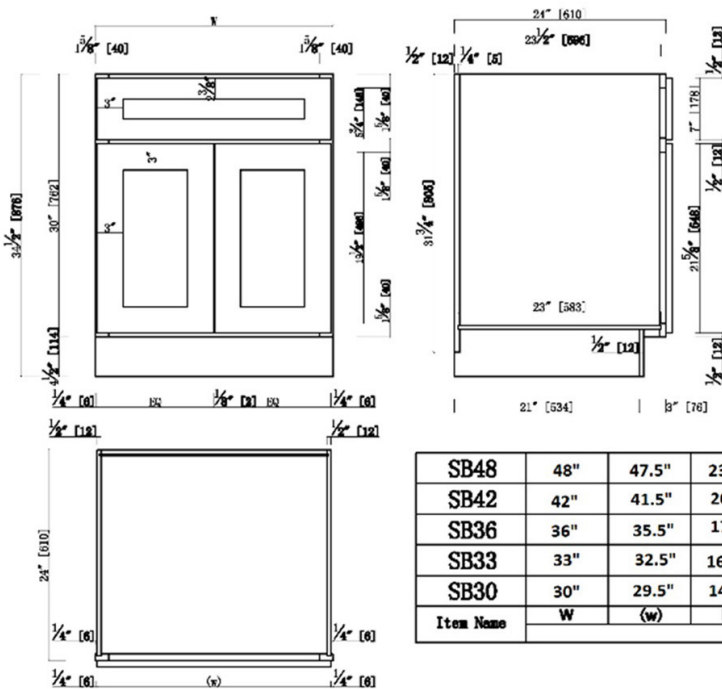


Brookings Unassembled Shaker Sink Base Kitchen Cabinet 36x34.5x24 Espresso



SPECIFICATIONS

MATERIAL CONSTRUCTION: Wood
WOOD SPECIES: Maple
ASSEMBLED DIMENSIONS: 34.5" H x 36" L x 24" D
ASSEMBLED WEIGHT: 59.17 lbs.
KITCHEN CABINET TYPE: Sink Base
MOUNTING TYPE: Floor Mount
CONSTRUCTION TYPE: Face Frame
HINGE STYLE: Soft Close
DOOR STYLE: 2 Wood shaker doors

DRAWER DIMENSIONS 1: N/A
DRAWER DIMENSIONS 2: N/A
DRAWER DIMENSIONS 3: N/A
DWR BOX MATERIAL: N/A
DWR CONSTRUCTION: N/A
DWR GLIDE: N/A
FAKE DWR QTY: 1
FAKE DWR LOCATION: Center

WARRANTY: 1-Year limited warranty
LEGAL FOR SALE IN CALIFORNIA: Yes
CARB COMPLIANT: CARB Phase 2
TSCA TITLE IV COMPLIANT: Yes

NUMBER OF SHELVES: 0
SHELF STYLE: N/A
ADJUSTIBLE SHELVES: N/A
SHELF ADJUSTIBILITY INCREMENTS: N/A
SHELF DIMENSIONS: N/A
SHELF THICKNESS: N/A
SHELF MATERIAL: N/A
FACE FRAME MATERIAL: Solid Maple
SIDES MATERIAL: Plywood
BOTTOM MATERIAL: Plywood
BACK PANEL MATERIAL: Plywood
BACK BRACE MATERIAL: Wood
TOE KICK INSET WIDTH: 3"
TOOLS NEEDED FOR INSTALLATION: Phillips Screwdriver
Mallet Wood Glue
Wood Screw
FASTENER TYPE:



TYPE:
JOB:
ORDER CODE:
APPROVALS: