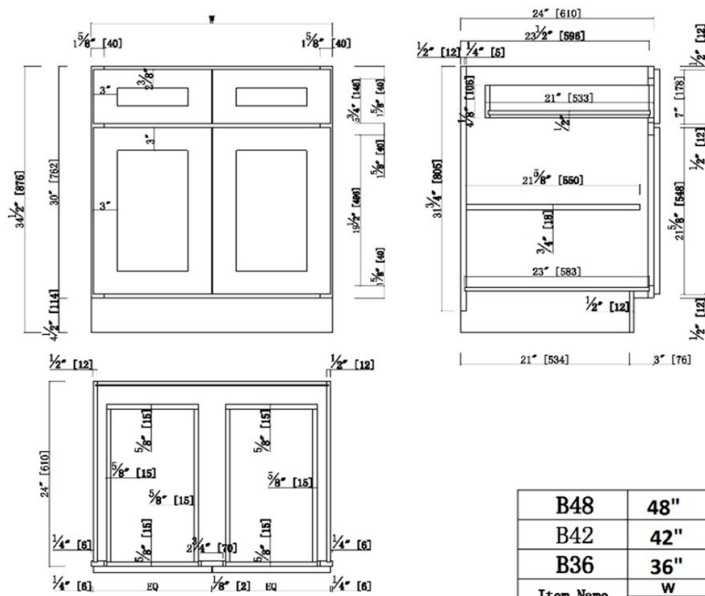


Brookings Unassembled Shaker Base Kitchen Cabinet 42x34.5x24 Espresso



B48	48"	23.75"
B42	42"	20.75"
B36	36"	17.75"
Item Name	W	EQ

SPECIFICATIONS

MATERIAL CONSTRUCTION: Wood
WOOD SPECIES: Maple
ASSEMBLED DIMENSIONS: 34.5" H x 42" L x 24" D
ASSEMBLED WEIGHT: 98.16 lbs.
KITCHEN CABINET TYPE: Base
MOUNTING TYPE: Floor Mount
CONSTRUCTION TYPE: Face Frame
HINGE STYLE: Soft Close
DOOR STYLE: 2 Wood shaker doors

DRAWER DIMENSIONS 1: 4.17" H x 21" L x 17.5" D
DRAWER DIMENSIONS 2: 4.17" H x 21" L x 17.5" D
DRAWER DIMENSIONS 3: N/A
DWR BOX MATERIAL: SOLID WOOD
DWR CONSTRUCTION: Dove Tail
DWR GLIDE: Dove Tail
FAKE DWR QTY: 0
FAKE DWR LOCATION: N/A

WARRANTY: 1-Year limited warranty
LEGAL FOR SALE IN CALIFORNIA: Yes
CARB COMPLIANT: CARB Phase 2
TSCA TITLE IV COMPLIANT: Yes

NUMBER OF SHELVES: 1
SHELF STYLE: Flat
ADJUSTIBLE SHELVES: Yes
SHELF ADJUSTIBILITY INCREMENTS: 2.5"
SHELF DIMENSIONS: 40.5" W x 21.625" D
SHELF THICKNESS: 0.75"
SHELF MATERIAL: Plywood
FACE FRAME MATERIAL: Solid Maple
SIDES MATERIAL: Plywood
BOTTOM MATERIAL: Plywood
BACK PANEL MATERIAL: Plywood
BACK BRACE MATERIAL: Wood
TOE KICK INSET WIDTH: 3"
TOOLS NEEDED FOR INSTALLATION: Phillips Screwdriver
Mallet Wood Glue
Wood Screw
FASTENER TYPE:



TYPE:
JOB:
ORDER CODE:
APPROVALS: