

Submitted Model No.:

Specific Features:

# DELTA

## KITCHEN FAUCETS

- Debonair® Series
- Single Handle Deck Mount
- 1, 2, 3 or 4 Hole Sink Applications
- Optional Soap Dispenser
- DIAMOND Seal® Technology
- Integrated Supply Tubes
- 2-Function Pull-Out

### STANDARD SPECIFICATIONS:

- Single handle kitchen faucets for exposed mounting on 1, 2, 3 and 4 hole sinks.
- Centermount or 8" (203 mm) centers with optional 10 1/2" (267 mm) long escutcheon included.
- 8 1/2" (216 mm) high, 9 5/8" (244 mm) long spout nestled in metal hub assembly, swings 120°.
- Spout is connected to valve body with a 53" (1346 mm) long hose.
- Pull-out spout operates in an aerated or spray mode via an easy push button.
- Lever handle shall return to neutral position when valve is turned off.
- Control mechanism shall be the diamond coated ceramic cartridge.
- Red/blue graphics on handle button to indicate hot/cold temperature.
- Touch-Clean® sprayhead.
- 3/8" O.D. straight, staggered pex supply tubes - 35" (889 mm) and 36" (914 mm) long.
- Standard 3/8" (10 mm) compression gasket fittings.
- Integral double check valves in spout.
- Soap dispenser bottle holds up to 8 oz.

### WARRANTY

- Lifetime Faucet and Finish Limited Warranty to the original consumer purchaser to be free from defects in material and workmanship.
- 5 Year Limited Warranty for usage in all industrial, commercial and business applications.



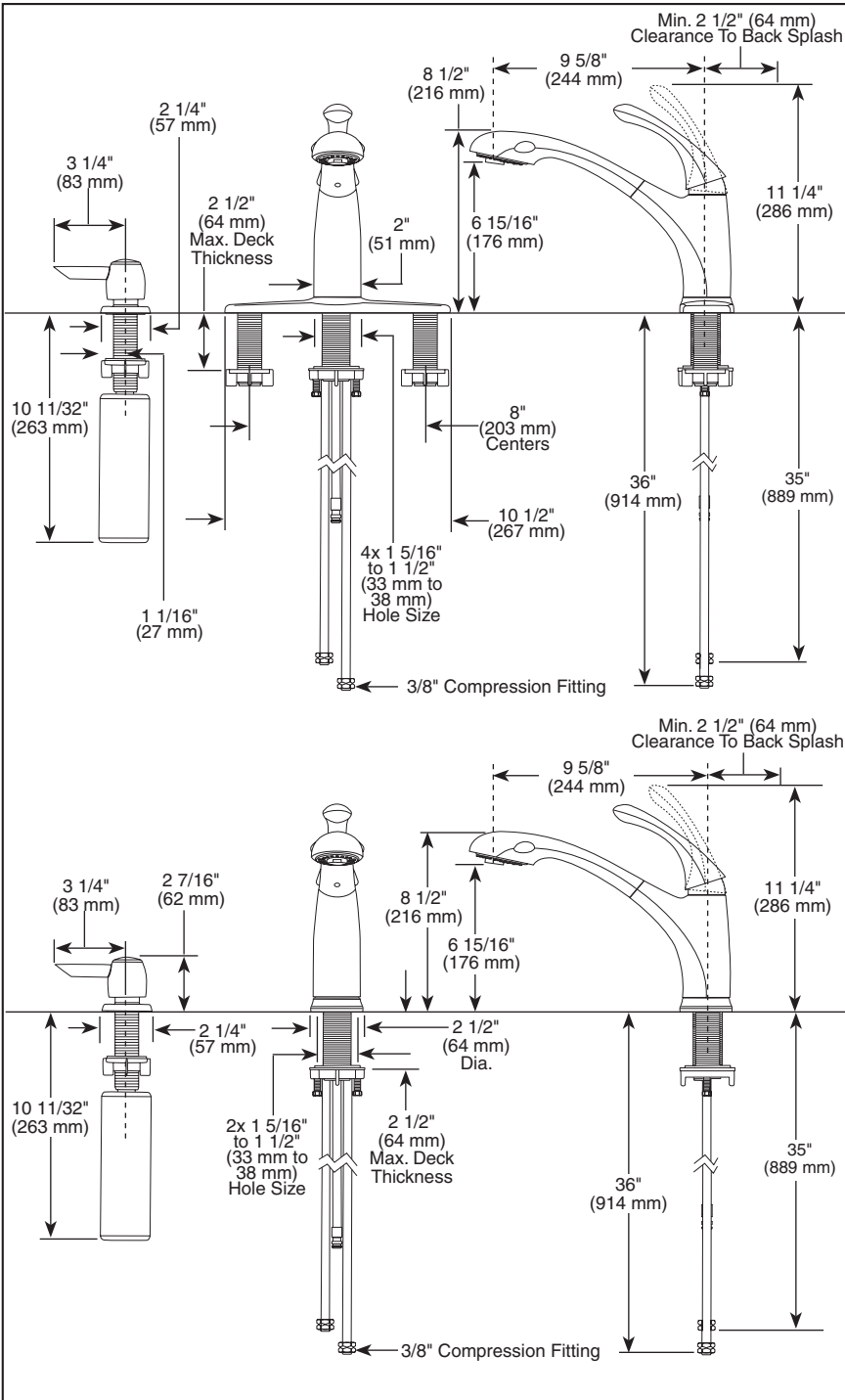
### COMPLIES WITH:

- ASME A112.18.1 / CSA B125.1
- ASME A112.18.6



Indicates compliance to ICC/ANSI A117.1

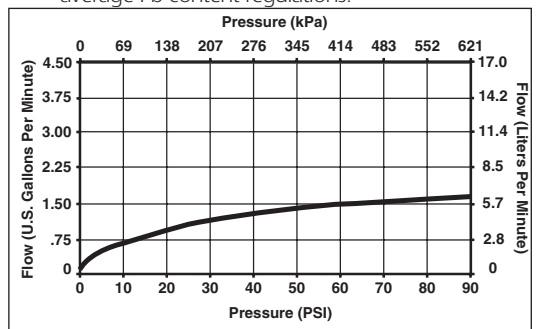
- Verified compliant with .25% weighted average Pb content regulations.



### ▲ Designate Proper Finish Suffix

Delta reserves the right (1) to make changes in specifications and materials, and (2) to change or discontinue models, both without notice or obligation. Dimensions are for reference only. See current full-line price book or www.specselect.com for finish options and product availability.

DSP-K-16927-SD-DST Rev. C



55 E. 111th Street, Indianapolis, Indiana 46280  
 350 South Edgeware Road, St. Thomas, ON N5P 4L1  
 © 2011 Masco Corporation of Indiana