



Tub and Shower

TRIM ONLY MultiChoice™ Universal Thermostatic shower with Diverter Tub Spout - requires separate order of R10000-UNWS Rough-in

Model No: T17TH255-05

COMPLIES WITH:

- ASME A112.18.1 / CSA B125.1
- Thermostatic Valve ASSE 1016
- Volume Control lever handle ADA compliant to ICC/ANSI A117.1/ADA
- (Contact Delta Representative for State and/or Local Approvals)
- Integral check valves in handshower comply to ASME Standard A112.18.3 for backflow protection.
- Handshower ADA compliant to ICC/ANSI A117.1/ADA



SPECIFICATION:

- TempAssure® 17T Thermostatic cartridge
- Polished chrome plated finish
- Non-removeable red/blue temperature markings
- TRIM ONLY MultiChoice™ Universal Thermostatic shower with Diverter Tub Spout - requires separate order of R10000-UNWS Rough-in
- Spout: - 1/2" IPS metal spout with pull up diverter
- Handle#: 5 - Metal Lever Volume Control Handle w/Temperature Adjustment
- #5 Shower - Handshower with Push Button Pause and standard 24" (610mm) Stainless Steel slide bar
- #5 Shower Flow Rate MAX: 2.5 GPM @ 80 PSI (9.5 L/min @ 552 kPa)
- #5 Shower Flow Rate MIN: 2.4 GPM @ 45 PSI (9.1 L/min @ 310 kPa)
- Optional 914mm(36") stainless steel slide bar to replace standard bar

OPERATION:

- PAUSE WARNING – FOR #5 Handshower

Plumbing Codes require that showerheads and handshowers provide a small but continuous flow of water (trickle) when in "PAUSE" mode. Because of this continuous flow, in certain circumstances pressure variations in the water line and/or changes in the position of the shower temperature control handle while in "PAUSE" mode could result in dramatic changes to the temperature of the water when the shower head or hand shower is returned to the "ON" position.

ALWAYS point the shower head away from yourself when returning to the "ON" position and feel the water with your hand before resuming your shower to ensure the water flow is not too hot or too cold.

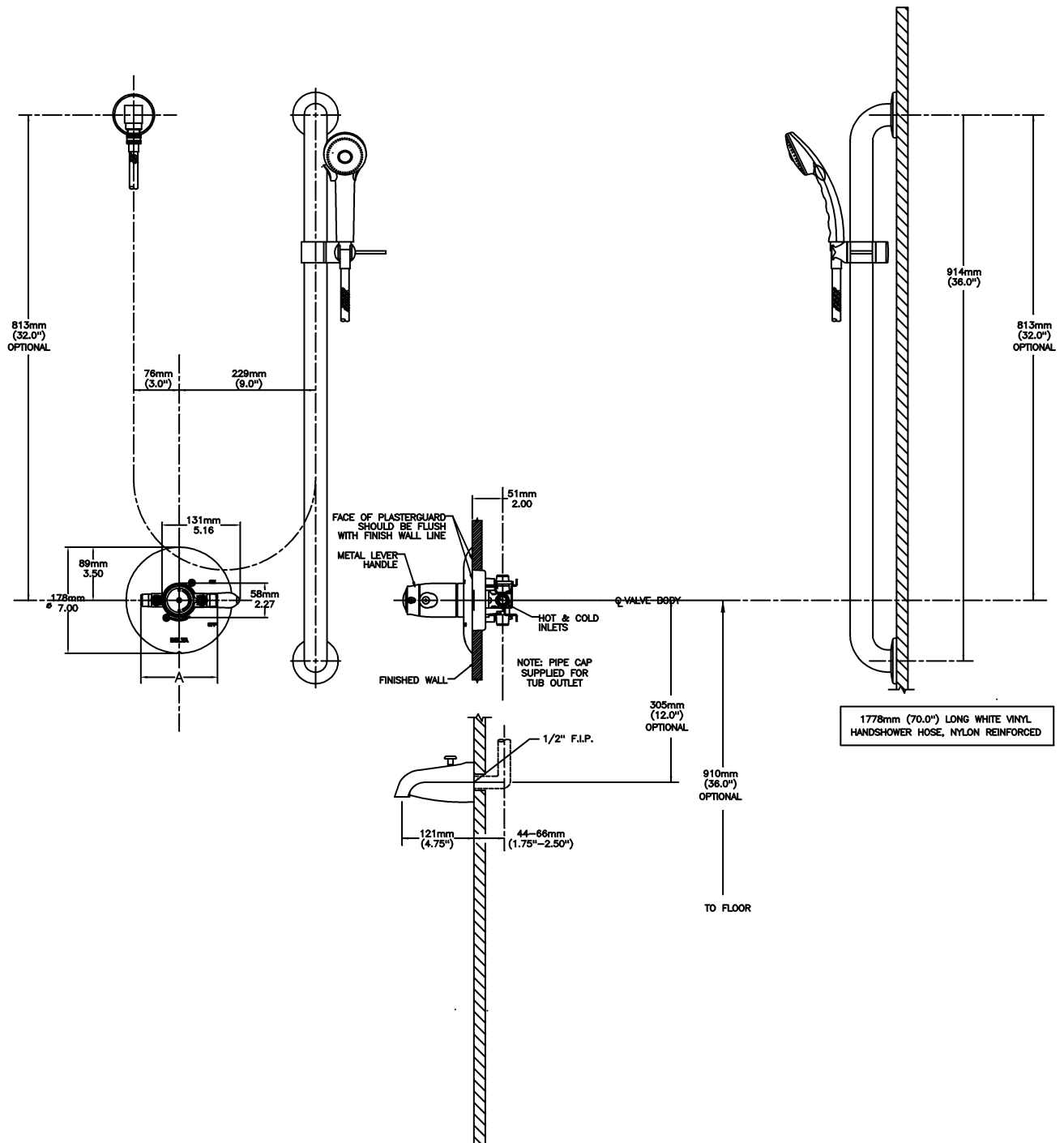
DO NOT allow children or others who might not understand this warning to use the "PAUSE" function.

(Dimensional drawing on following page)

Delta reserves the right (1) to make changes to specifications and materials, and (2) to change or discontinue models, both without notice or obligation. Dimensions are for reference. Measurement may vary plus or minus 6mm(0.25"). Mounting locations are suggested only. Check with local codes for requirements in your area. This spec was produced July 22, 2013.

Delta Faucet Company - 55 East 111th St. - Indianapolis, Indiana, USA 46280 - (317) 848-1812
Delta Faucet Canada - 395 Matheson Blvd E - Mississauga, Ontario, Canada L4Z 2H2 - (905) 712-3030

Model No: T17TH255-05



Delta reserves the right (1) to make changes to specifications and materials, and (2) to change or discontinue models, both without notice or obligation. Dimensions are for reference. Measurement may vary plus or minus 6mm(0.25"). Mounting locations are suggested only. Check with local codes for requirements in your area. This spec was produced July 22, 2013.

Delta Faucet Company - 55 East 111th St. - Indianapolis, Indiana, USA 46280 - (317) 848-1812
 Delta Faucet Canada - 395 Matheson Blvd E - Mississauga, Ontario, Canada L4Z 2H2 - (905) 712-3030