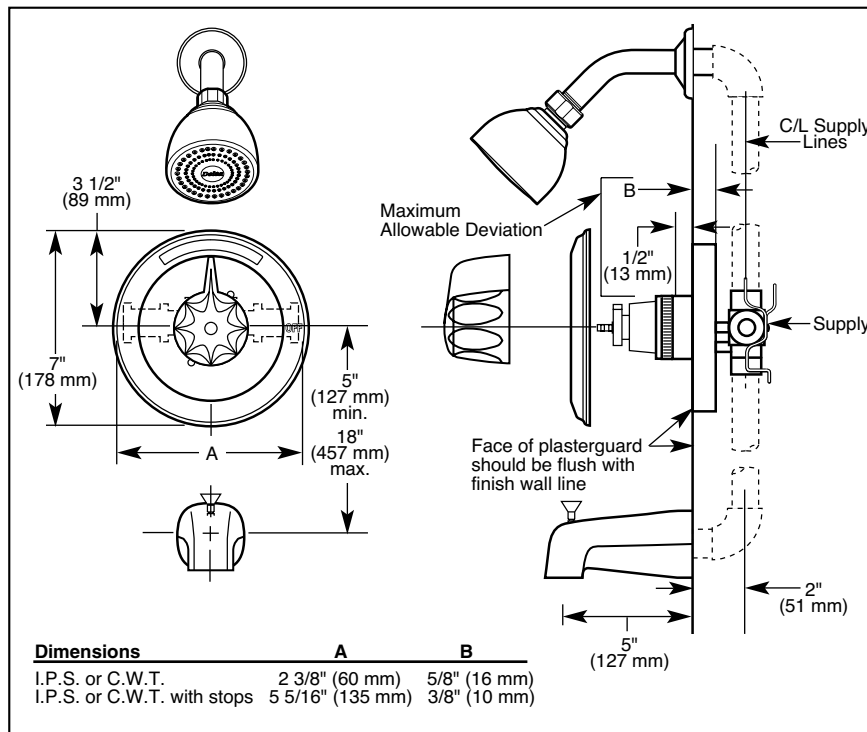


Submitted Model No.: \_\_\_\_\_

Specific Features: \_\_\_\_\_



## BATH MIXING VALVES

- Valve Only (1305 Series)
- Shower Only (1325 Series)
- Tub/Shower (1345 Series)
- Single Handle
- Monitor® with Scald-Guard® Valve
- Pressure Balance
- Temperature Only Controlled with Handle



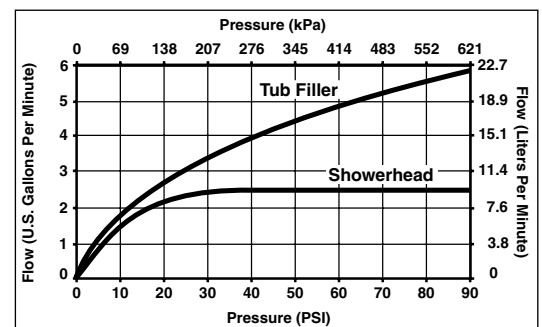
**LISTED**  
UL Listed to US and Canadian  
Safety Standards  
21E

### COMPLIES WITH:

- ASME A112.18.1
- CSA B125
- Indicates ADA compliance to CABO/ANSI A117.1
- ASSE 1016
- IAPMO Listed
- CSA Certified
- City of L.A. approved

### STANDARD SPECIFICATIONS:

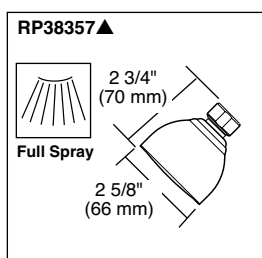
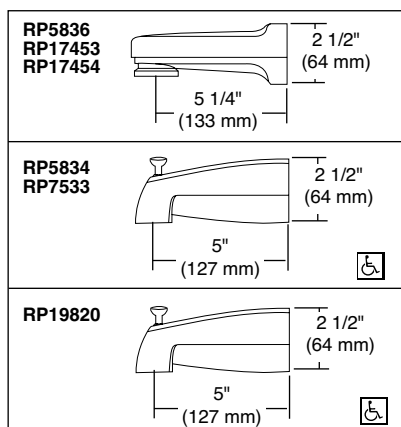
- Pressure balanced single handle bath mixing valve.
- Requires 1 1/2" (38 mm) wall cavity.
- Back-to-back installation capability.
- Solid brass fabricated body.
- Vandal resistant blade handle.
- Monitor® with Scald-Guard® valve. Valve accomplishes pressure balancing by using a stainless steel spool and sleeve in a replaceable cartridge. Cartridge utilizes integral check valves to prevent the cross flow of water within the valve. Scald-Guard® valve reduces the flow of water to .5 gpm (1.9 L/min) within 5 seconds of the complete loss of pressure in the cold water supply line. Outlet water temperature is maintained within +/-3°F variation with changes in either hot or cold supply of up to 50 percent of the normal supply pressure.
- Temperature only controlled by handle with cold water always coming on first if cartridge is installed correctly.
- Field adjustable to limit handle rotation into hot water zone. Per ASSE 1016.
- 120° maximum handle rotation.
- Screwdriver stops.
- All parts shall be replaceable from front of valve.



Standard Features	1305-WSHDF	1305-CWSHDF	1325-WSHDF	1325-CWSHDF	1345-WSHDF	1345-CWSHDF
Washerless	◆	◆	◆	◆	◆	◆
Scald-Guard® Valve	◆	◆	◆	◆	◆	◆
Back-to-Back Installation	◆	◆	◆	◆	◆	◆
1/2" I.P.S. Inlets and Outlets	◆		◆		◆	
1/2" C.W.T. Sweat Inlets and Outlets		◆		◆		◆
Replaceable Cartridge	◆	◆	◆	◆	◆	◆
Adjustable Rotational Limit Stop	◆	◆	◆	◆	◆	◆
Vandal Resistant Metal Blade Handle	♿	♿	♿	♿	♿	♿
Screwdriver Stops	◆	◆	◆	◆	◆	◆
Metal Shower Arm and Flange			◆	◆	◆	◆
Push-Clean™ Showerhead/1 Spray Pattern			◆	◆	◆	◆
Metal Tub Filler with Pull-Up Diverter					◆	◆
Chrome Finish	◆	◆	◆	◆	◆	◆

#### Available Options for Field Conversion:

- Cambridge Brass vandal resistant front mounting wall mount showerhead. Universal 1/2" FIP copper sweat inlet. Non-adjustable 30° spray angle from wall. 2.5 gpm @ 80 psi (9.5L/min @ 552 kPa). Cast brass with cast brass anchor plate. Chrome plated. Order 76262.
- Vandal resistant brass THE EMBRACER® showerhead - five spray patterns - 2.5 gpm @ 80 psi (9.5L/min @ 552 kPa). Chrome plated. Order RPW66HDF. See installation wrench below.
- Spanner Wrench for RPW66HDF. Order RP13498.
- Shower Arm. Order RP6023.
- Shower Flange. Order RP6025.
- Metallic tub filler with pull-down diverter for 1/2" C.W.T. or 1/2" I.P.S. Order RP17454.
- Non-metallic tub filler with pull-down diverter for 1/2" C.W.T. or 1/2" I.P.S. Order RP17453.
- Non-metallic slip-on tub filler with pull-down diverter for 1/2" C.W.T. Order RP5836.
- Metallic tub filler with pull-up diverter for 1/2" C.W.T. or 1/2" I.P.S. Order RP7533.
- Non-metallic tub filler with pull-up diverter for 1/2" C.W.T. or 1/2" I.P.S. Order RP5834.
- Non-metallic slip-on tub filler with pull-up diverter for 1/2" C.W.T. Order RP19820.
- Bath waste assemblies and bath accessories also available separately.



Indianapolis, Indiana 46280  
A Division of Masco Corporation of Indiana  
© 2002 Masco Corporation of Indiana