



Electronic Exposed TECK® II Flush Valves (with H2Optics®)

212381

212381

212381

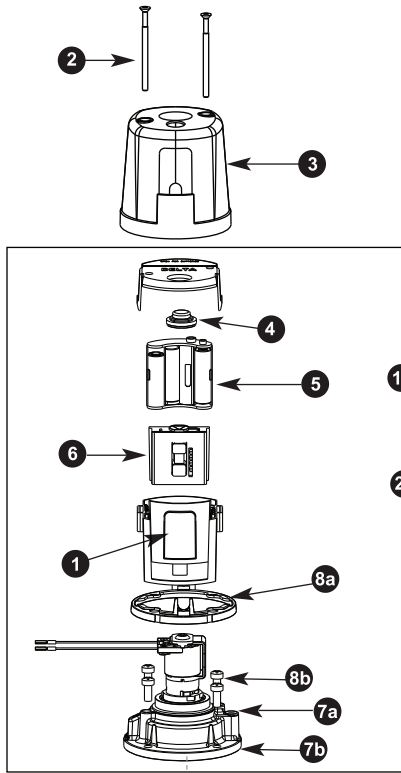
212381

212381

212381

212381

212381



Record model number:

81T2 **1** **A** - - - **DF**

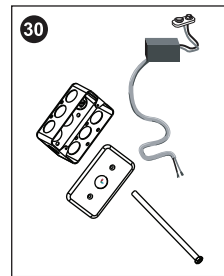
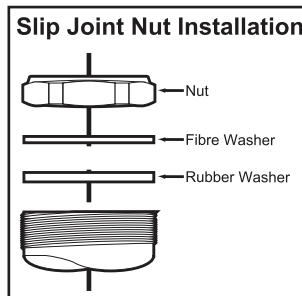
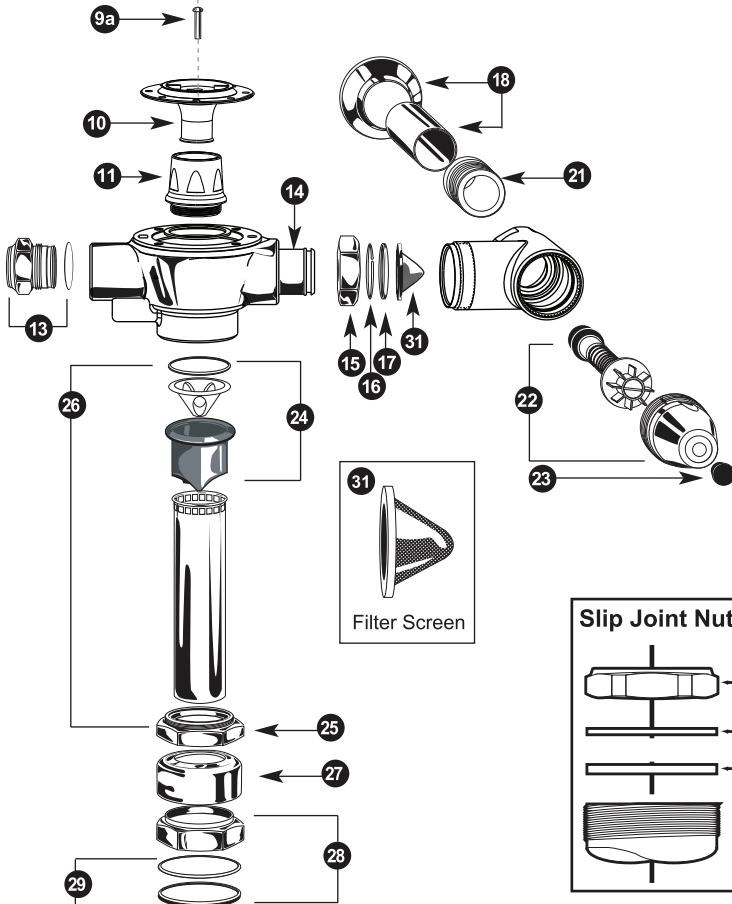
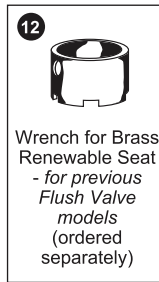
Valve Type
0 = W/C (Water Closet)
2 = W/C - 22" outlet tube

Power Option
BT = Battery
HW = Hardwired

Additional Options
(leave blank if not applicable)
30 = w/Sloan ZurnTail
20 = Less Stop Assy
1 = V/B Tube w/Tee Assy (WC only)

Flush Volumes
(leave blank - not applicable)

Dual Flush Option
DF = dual flush



For valves manufactured after January 2013.

PLEASE LEAVE this M&I Sheet with the owner, maintenance plumber, etc. as items relating to ongoing maintenance suggestions and procedures are included.

Item #	Part #	Description
1	061063A	Replaceable Lens for 3rd Generation E-FV
2	061138A	Cover Screws for 3rd Generation E-FV
3	061139A	Metal Cover for 3rd Generation E-FV
4	see #6	Electronic Button Head Assembly
5	060334A	Battery Holder
6	061363A	Water Closet Board and Electronic Override Button
7	061024A	Regulating Screw & O-Ring
8a	061169A	Cast Cap/Solenoid & Regulating Screw Assembly
8b	061141A*	Cover Gasket (3/pkg)
9a	060078A*	Screws for Cast Cap (4/pkg)
9b	060507A	Water Closet Poppet Pin Pack (3/pkg)
10	061323A	Diaphragm/Guide Assembly - WC
	060079A-MMO	Diaphragm Package
11	062007A	Brass Seat with O-ring
12	060341A	Wrench for Brass Renewable Seat (ordered separately)
13	060342A	Union Nut CP
14	060506A	Plug & O-Ring for Handle End
15	060735A	Retaining Ring
16	060692A	Standard Adjustable Tail CP
17	060082A*	Adjustable Tail O-Ring Package (20/pkg)
18	060504A	S/S Wall Flange & Cover Tube
19	061142A	Electronic Water Closet Repair Kit for 3rd Generation E-FV
20	061144A	Electronic Water Closet Repair Kit for DF 3rd Gen E-FV

* Package Quantities May Change. Check the parts section of the latest Delta Commercial Faucet Price List for current quantities.

** Each individual sensor module requires its own 24 VAC to 6 VDC hardware converter.

Item #	Part #	Description
21	060697A	1" Copper Sweat Inlet Adaptor
	060694A	3/4" Copper Sweat Inlet Adaptor
	060764A	3/4" FIP Inlet Adaptor
22	060843A	Retrofit Check Stem Unit, Capnut & Button Complete
	060844A	Seat Washer, Spring, Button & O-Ring Kit
	060859A	Angle Stop with Union Nut & Tail Complete
23	060081A*	Plug Button Package (12/pkg)
24	060785A	VB Sleeve Complete
25	060094A	CP Male Threaded Coupling Ring
26	060782A	1 1/2" x 10" VB, Ring & Tube Complete (for 81T201)
	060783A	1 1/2" x 22 3/4" VB, Ring & Tube Complete (for 81T221)
	060784A	3/4" x 11 1/2" VB, Ring & Tube Complete (for 81T231)
	060781A	1 1/2" x 10" VB, Side Outlet Tee Tube Complete
27	060004A	1 1/2" Spud Flange
	060463A	3/4" CP Coupling Nut, 3/4" Washer & 3/4" Spud Flange
28	060778A	1 1/2" Rough Coupling Nut & Washer
	060463A	3/4" CP Coupling Nut, 3/4" Washer & 3/4" Spud Flange
29	060083A*	1 1/2" Rubber Slip Joint Washer (12/pkg)
30	061069A	Hardwire Converter & Rigid Connection Assy for 3rd Gen E-FV
31	060344A	Filter Screen Kit (12/pkg) for Teck tails
	060704A	Transformer (110 to 24 VAC) for 5 Sensor Modules**
	060771A	Transformer (110 to 24 VAC) for 10 Sensor Modules**

Product #	A	B	C
	Max.	± 11mm (7/16")	Min.
All 81T201BT/ 81T201HW variations*	292mm (11 1/2")	121mm (4 3/4")	54mm (2.13")

* Note: -30 models, B = 114mm - 131 mm (4.5" to 5.18")

BEFORE THE FIRST FLUSH (COMPLETE VALVES)

FLUSH BOTH OLD AND NEW PIPES:

It is important to FLUSH and CLEAN thoroughly both new and old water piping to ELIMINATE contaminants (eg. scale, sediment, gravel, cuttings, solder, etc.) from the line.

Where the water has a sediment content, a PIPE STRAINER in the supply line should alleviate that condition and protect working parts of flushometers and faucets.

On a NEW INSTALLATION, always flush the valve 4 or 5 times to clean out supply line debris. It is also advisable where more than one flushometer is installed on a water line, to flush out the water piping through the last flushometer outlet of the pipe line.

INSTALL FILTER SCREEN (included):

Note: Place filter in stop bore with conical screen facing the water flow.

Caution: Do not push filter in too far. Let filter seat against face of flush valve tail. Periodic cleaning of the filter screen with water is recommended depending on local water conditions to remove any dirt or sediment. See filter screen M&I for additional installation information.

ELIMINATE AIR FROM VALVES:

The FIRST FLUSH should ELIMINATE all air from the TECK flushometer. DO NOT ADJUST flushometer based on the results of the first flush.

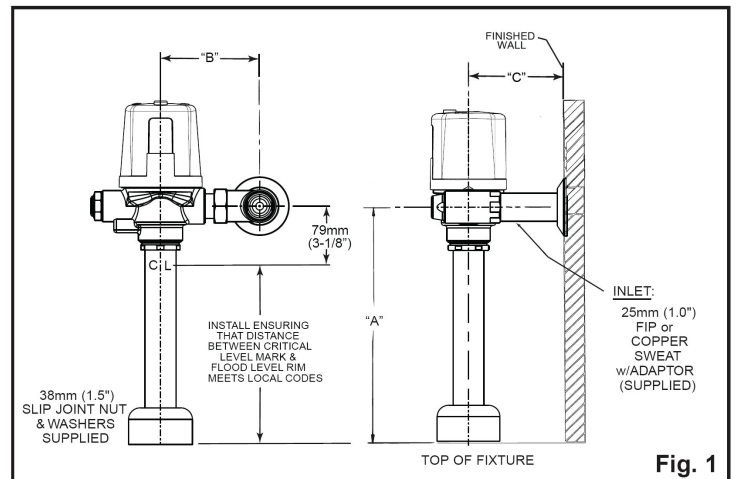


Fig. 1

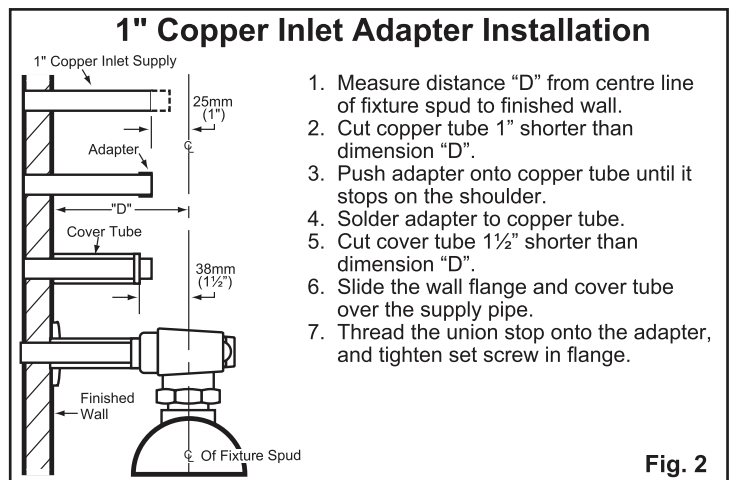


Fig. 2