



Contrasta™ Series - Proximity® Faucet with Electronic Hand Soap System **820DPA50-SD**

Description

Proximity® Deck-Mounted Faucet, Hardwire Operated, Temperature Mixer Not Included, Chrome Finish, 0.5 gpm (1.9 L/min), Laminar, Aerated or Mikado® Spray, with Proximity® Deck-Mounted Foam & Liquid Soap Dispenser in Matching Finish

Specifications

- Flow Rate: 0.5 gpm (1.9 L/min)
- Spray Type: Laminar, Aerated or Mikado® Spray
- Spout Type: Modern angular spout
- Sensor Type: Proximity® (both Faucet and Soap System)
- Mounting Type: Single Hole
- Power Supply: Hardwire Operated (24 VAC) requires transformer (sold separately)
- Temperature Mixer: Below Deck Thermostatic Mixing Valve (sold separately)
- Finish: Chrome (both Faucet and Soap System)
- Factory Default Timeout: 45s (Faucet only)

Features

- Vandal resistant Laminar, Aerated, and Mikado® Spray outlets included
- Solenoid & Controller in surface mount control box – supplied as complete product
- Metal hold-down package
- Valve has easy accessible filter screen
- Single tempered water supply
- Four adjustable soap dispense volumes in both foam and liquid mode
- Above deck priming and cleaning mode (both Faucet and Electronic Hand Soap System)
- Easy accessible soap fill port
- No visible sensor, the spout is the sensor
- Foam and liquid soap options

Required Accessories

- **060704A** - Transformer 120 to 24 VAC Class 2 20 VA
- **060771A** - Transformer 120 to 24 VAC Class 2 40 VA
- **R3270-MIXLF** - Thermostatic Mixing Valve

Optional Accessories

- **061431A** - 91 oz (2.7L) Soap Bottle



Complies With

- ASME A112.18.1/CSA B125.1
- ICC/ANSI A117.1
- Verified compliant with 0.25% weighted average Pb content regulations



(Contact Delta Representative for State and/or Local Approvals)

Operation

- Hands free operation (both Faucet and Electronic Hand Soap System)
- Adjustable sensing range and timeout (Faucet only)
- Adjustable auto water shut off feature. Factory set to 45 seconds
- Metering mode with selectable flow times of 7 seconds to 4 minutes, factory set to off
- Periodic rinse feature, time adjustable in 6 hour increments up to 2 days. Selectable rinsing lengths from 10 to 180 seconds. Factory set to off
- Configurable maximum number of soap activations
- Maintenance/Cleaning Mode: Allows for a 20, (40 – Default) or 60 second deactivation for maintenance or cleaning
- Soap sanitary purge interval (1-30 Days - Default set to off)

Notes

- To be used with standard liquid soap with a maximum viscosity of 2,800 cPs
- Not intended for thick lotions, scrubs, soaps with beads or pumice, or alcohol-based hand sanitizers

NOTICE Dimensions are for reference only. Measurements may vary $\pm 0.25"$ (6 mm).

Max. flow rates are at 60 psi (414 kPa).

WaterSense® is a registered trademark of the U.S. Environmental Protection Agency.

Delta Faucet Company reserves the right (1) to make changes in specifications and materials, and (2) to change or discontinue models, both without notice or obligation. See current full-line price book for finish options and product availability.

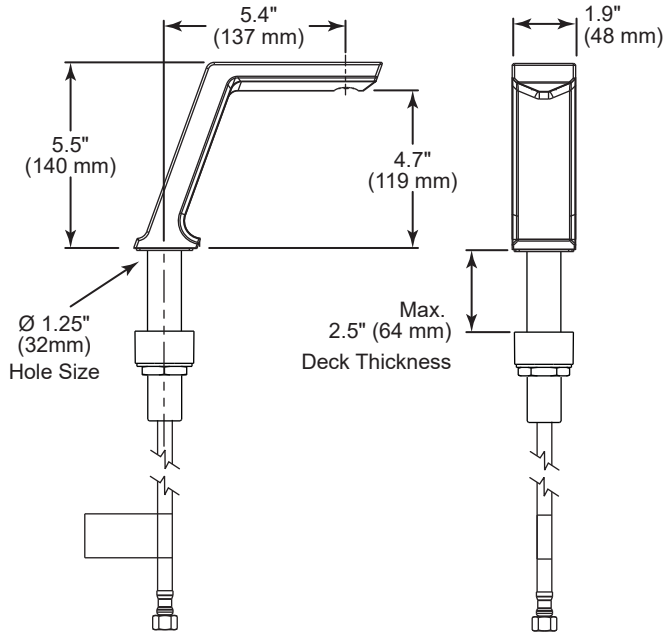
Masco Canada Limited
350 South Edgeware Rd, St Thomas, Ontario, Canada N5P 4L1
1-800-387-8277

820DPA50-SD

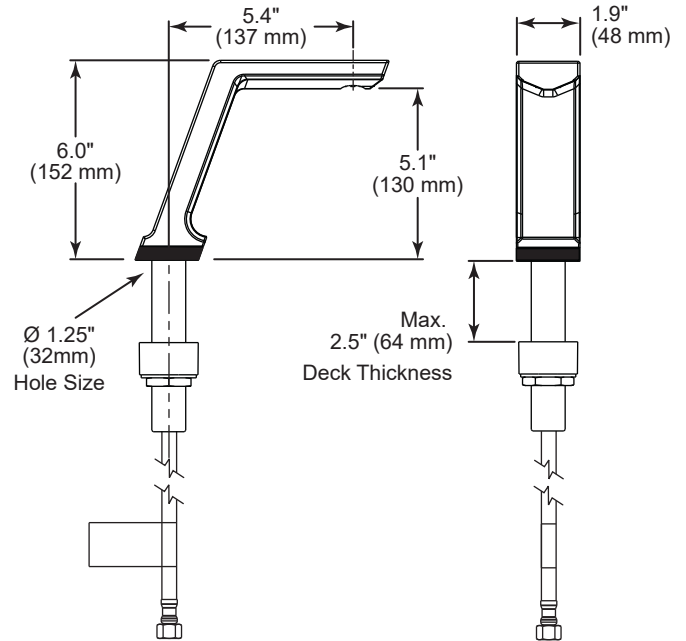
This spec was produced on June 06, 2024.

820DPA50-SD

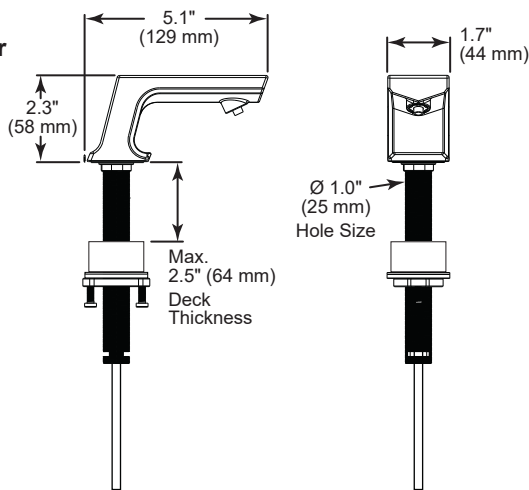
Single Hole Faucet without Black Spacer



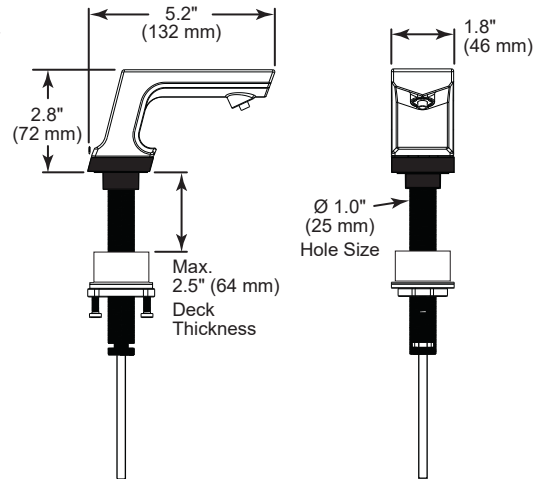
Single Hole Faucet with Black Spacer



Hand Soap
without
Black Spacer



Hand Soap
with
Black Spacer



NOTICE Dimensions are for reference only. Measurements may vary $\pm 0.25"$ (6 mm).

Max. flow rates are at 60 psi (414 kPa).

WaterSense® is a registered trademark of the U.S. Environmental Protection Agency.

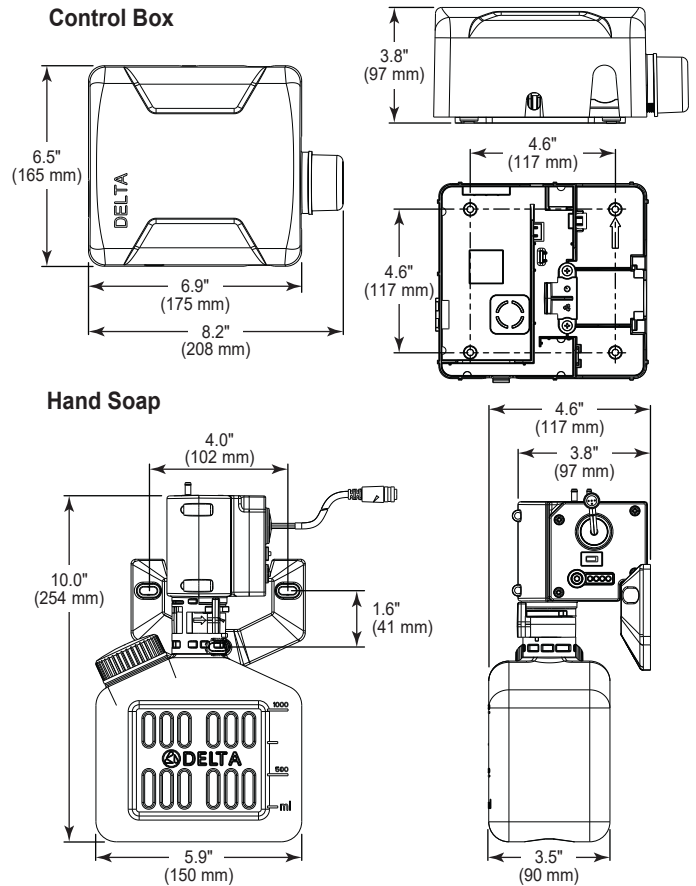
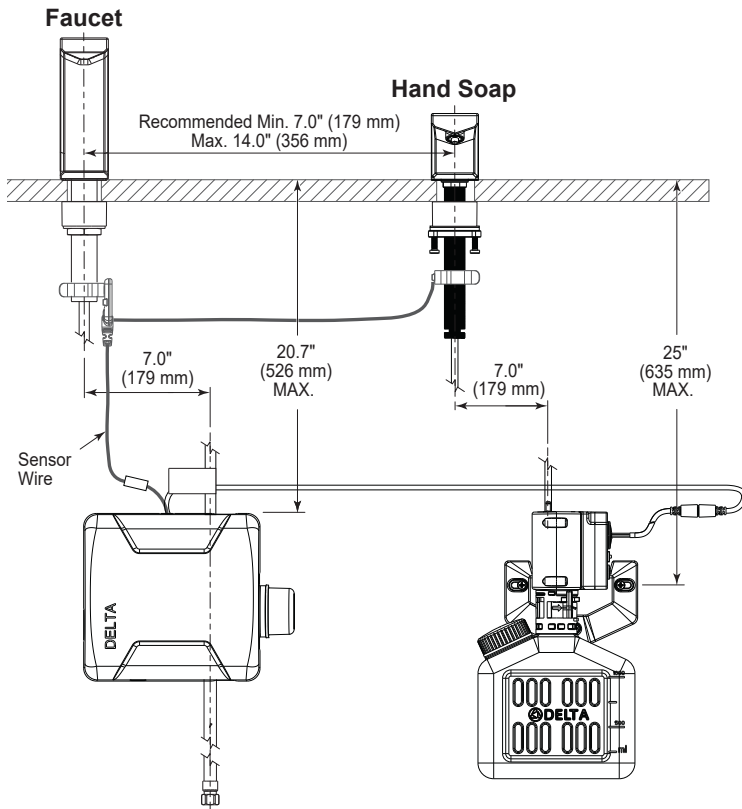
Delta Faucet Company reserves the right (1) to make changes in specifications and materials, and (2) to change or discontinue models, both without notice or obligation. See current full-line price book for finish options and product availability.

Masco Canada Limited
350 South Edgeware Rd, St Thomas, Ontario, Canada N5P 4L1
1-800-387-8277

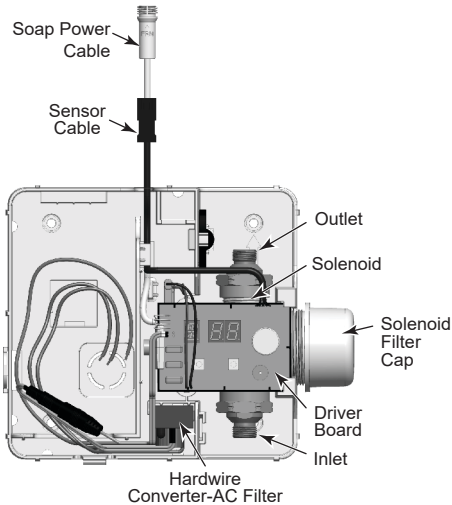
820DPA50-SD

This spec was produced on June 06, 2024.

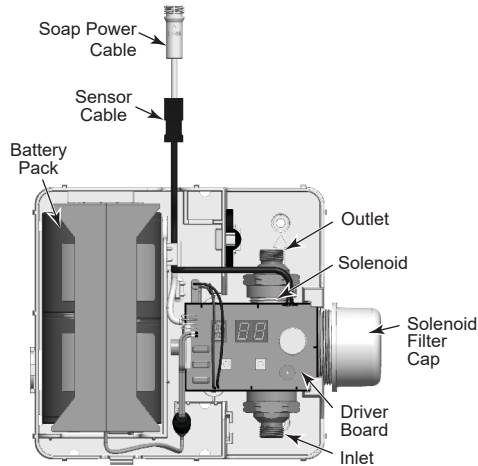
820DPA50-SD



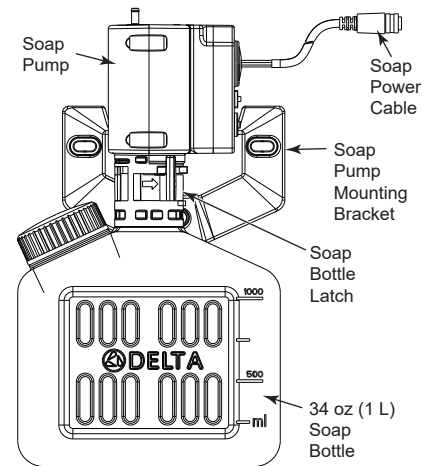
Hardwire Operated Control Box



Battery Operated Control Box



Hand Soap



NOTICE Dimensions are for reference only. Measurements may vary $\pm 0.25"$ (6 mm).

Max. flow rates are at 60 psi (414 kPa).

WaterSense® is a registered trademark of the U.S. Environmental Protection Agency.

Delta Faucet Company reserves the right (1) to make changes in specifications and materials, and (2) to change or discontinue models, both without notice or obligation. See current full-line price book for finish options and product availability.

Masco Canada Limited
350 South Edgeware Rd, St Thomas, Ontario, Canada N5P 4L1
1-800-387-8277

820DPA50-SD

This spec was produced on June 06, 2024.