

Wallmount Service Sink Faucets Rigid Spout

TECK®
COMMERCIAL

DELTA®

Specification: (example)

- **HEAVY-DUTY CAST BRASS** two handle wallmount service sink faucet
 - 203mm (8") centers, polished chrome plated finish
 - Integral check stops
 - **HEAVY DUTY 1/2" IPS BRASS PIPE** rigid pail hook spout
 - ADA compliant color indexed metal lever or blade handles with vandal resistant screws
 - **CER-TECK®** 1/4 turn ceramic structures
- and ... with ... (add spout/brace required)
 with ... (add outlet/VB required)
 with ... (add handle required)
 with ... adjustable centers
 (add Suffix **AC** if required – See Back Page)

28C2384



28C2383



Engineer/Architect Approval

Model Specified:

Approval:

Date:

DESCRIPTION	PRODUCT NO.
Two Handle Wallmount With Integral Check Stops	28C2



SPOUT/BRACE		OUTLET/VB		HANDLE	
0	140mm (5 1/2") Plain Spout, Less Brace (1)	0		0	
1		1	Body Mounted Double-Check Vacuum Breaker, Hose Thread Outlet (2)	1	
2		2		2	
3	267mm (10 1/2") Spout with Adjustable Top/Bottom Brace (1)	3		3	76mm (3") Lever Blade Handles
4		4		4	102mm (4") Blade Handles, Sanitary Hoods
5		5		5	152mm (6") Wrist Handles, Sanitary Hoods
6		6	Spout End Vacuum Breaker, Hose Thread Outlet	6	
7		7		7	
8		8	Body Mounted Angle Vacuum Breaker, Hose Thread Outlet	8	
9	406mm (16") Spout with Bottom Fork Brace (1) (3)	9		9	

(1) Distance from wall to Spout Outlet based on #6 Outlet. (2) Recommended for applications with a shut-off valve after Spout Outlet.
 (3) AC Suffix **not** available with #9 Spout/Brace Option.

Flow Rates are at 60 PSI.
 Refer to www.specselect.com for individual models.
 Note: Use this page front and back as a product submittal sheet.

Delta reserves the right (1) to make changes in specifications and materials, and (2) to change or discontinue models, both without notice or obligation.
 Dimensions are for reference only. See current full-line price book or www.specselect.com for finish options and product availability.

DSP-28C2 Rev. C

Approvals:

- CSA certified
- Complies to ASME A112.18.1/CSA B125.1
- Handles No. 3, 4, and 5
Indicates compliance to ICC/ANSI A117.1

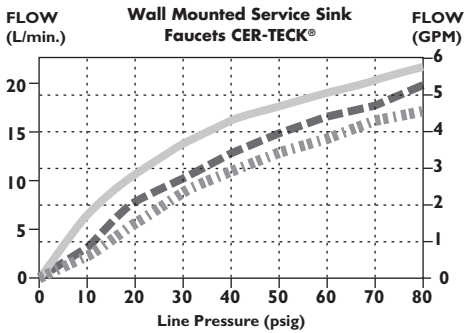
• OUTLET/VACUUM BREAKERS:

No. 1 Certified under CSA Standard B64.8 and meets ASSE 1035

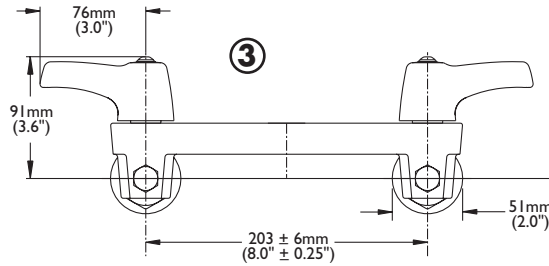
No. 6 Certified under ASSE 1011 and CSA Standard B64.2

No. 8 Certified under ASSE 1001 and CSA Standard B64.1.1

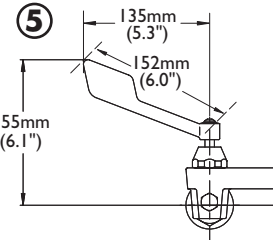
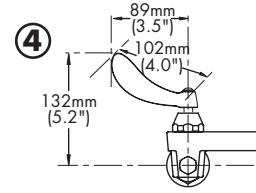
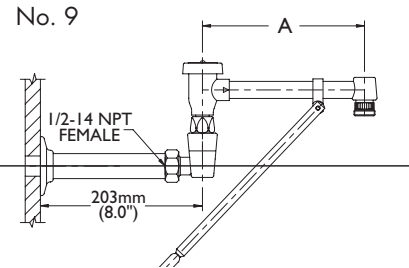
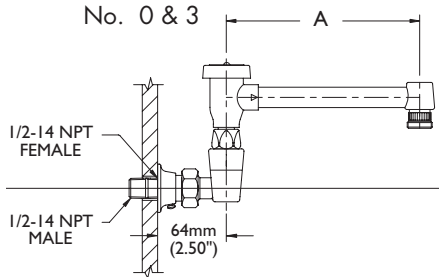
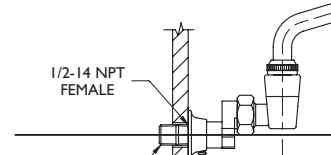
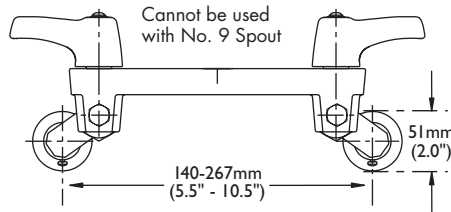
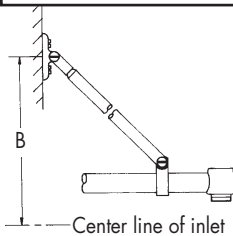
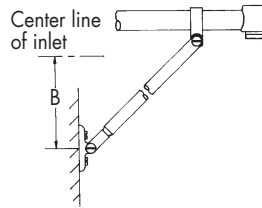
(Contact Delta Representative for State and/or Local Approvals.)

FLOW RATE vs PRESSURE

**Available Option
for Field Conversion**
 28T911

Hose and Hanger
See DSP-28T9 for detailed specification

WALLMOUNT FAUCET


INLETS: 1/2-14 NPT (FEMALE)
OR 1/2-14 NPT (MALE) – WITH SUPPLIED NIPPLE


SPOUT/BRACE

ADJUSTABLE CENTERS
 Add Suffix "AC" to Product Number

TOP BRACE

BOTTOM BRACE

BRACES

Two
No. 8 x 1"
Pan Head
Screws
Supplied

29mm
(1.13")

Four
No. 8 x 1"
Pan Head
Screws
Supplied

29mm
(1.13")
114mm
(4.5")

RIGID SPOUT ASSEMBLIES

SPOUT DIMENSIONS	Outlet/VB - "A"					
	#1		#6		#8	
	mm	in.	mm	in.	mm	in.
Spout/Brace #0 less -AC	104	4.1	81	3.2	86	3.4
Spout/Brace #3 less -AC	211	8.3	203	8.0	208	8.2
Spout/Brace #9 less -AC	211	8.3	203	8.0	208	8.2
Spout/Brace #0 with -AC	104	4.1	81	3.2	86	3.4
Spout/Brace #3 with -AC	211	8.3	203	8.0	208	8.2
Spout/Brace #9 with -AC	#9 spout/brace not available with -AC suffix					

Brace Rough-in dimensions
based on #8 Outlet/VB

INLETS - 1/2" FIP/MIP on
Spouts # 0 & 3

INLETS - 1/2" FIP on Spout # 9

Note: Measurements may vary ± 6mm (0.25")

Refer to www.specselect.com for individual models.

Note: Use this page front and back as a product submittal sheet.