



Bedpan Cleansers

In-Wall Volume Control Valve with integral stop

Model No: 54T1254-QD

COMPLIES WITH:

- CSA certified.
- Complies to ASME A112.18.1/CSA B125.1
- Handle Control Nos. 1 and 2, plus Foot Pedal Control No. 4 meet ADA compliance to ICC/ANSI A117.1/ADA
- Inline vacuum breaker certified under CSA Standard B64.8 and meets ASSE Standard 1035
- (Contact Delta Representative for State and/or Local Approvals)



SPECIFICATION:

- In-wall volume control valve
- cast brass
- integral stop
- TUF-TECK® institutional structure
- 90% flow with first 1/4 turn of operation
- Positive shutoff even in poor water conditions
- Polished chrome plate finish, exposed metal trim
- 70mm (2 3/4") Lever blade handle ADA compliant, metal, color-indexed with Vandal Resistant (VR) screws
- 1/2" FIP inlet/outlet on valve
- Spout#: 5 - 3.13" long wallmount rigid spout
- With brass spray holder
- Double check in-line vacuum breaker
- Outlet#: 4 - Spray bedpan outlet (with self-close stop) with insulated handle and 1500mm (59") long reinforced PVC/Polyurethane hose
- Integral anti-drip check
- w/ Quick Disconnect for hose(QD)

OPERATION:

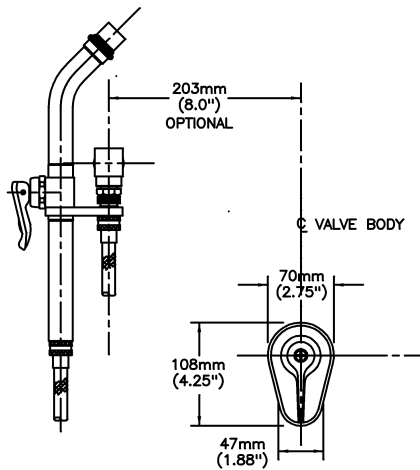
- Not Available

(Dimensional drawing on following page)

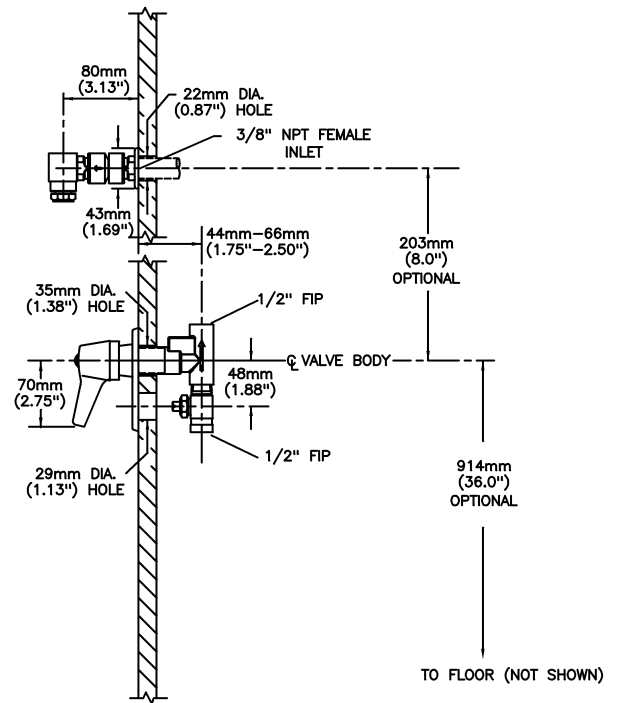
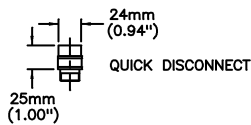
Delta reserves the right (1) to make changes to specifications and materials, and (2) to change or discontinue models, both without notice or obligation. Dimensions are for reference. Measurement may vary plus or minus 6mm(0.25"). Mounting locations are suggested only. Check with local codes for requirements in your area. This spec was produced January 06, 2017.

Delta Faucet Company - 55 East 111th St. - Indianapolis, Indiana, USA 46280 - (317) 848-1812
Delta Faucet Canada - 395 Matheson Blvd E - Mississauga, Ontario, Canada L4Z 2H2 - (905) 712-3030

Model No: 54T1254-QD



CHECK LOCAL CODES FOR PROPER
CROSS FLOW PROTECTION REQUIREMENTS



Delta reserves the right (1) to make changes to specifications and materials, and (2) to change or discontinue models, both without notice or obligation. Dimensions are for reference. Measurement may vary plus or minus 6mm(0.25"). Mounting locations are suggested only. Check with local codes for requirements in your area. This spec was produced January 06, 2017.

Delta Faucet Company - 55 East 111th St. - Indianapolis, Indiana, USA 46280 - (317) 848-1812
Delta Faucet Canada - 395 Matheson Blvd E - Mississauga, Ontario, Canada L4Z 2H2 - (905) 712-3030