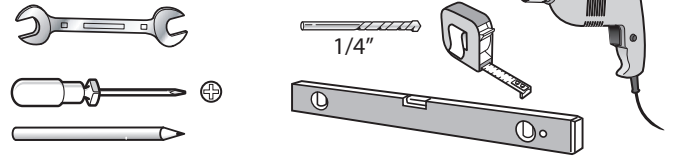


# DELANEY HARDWARE

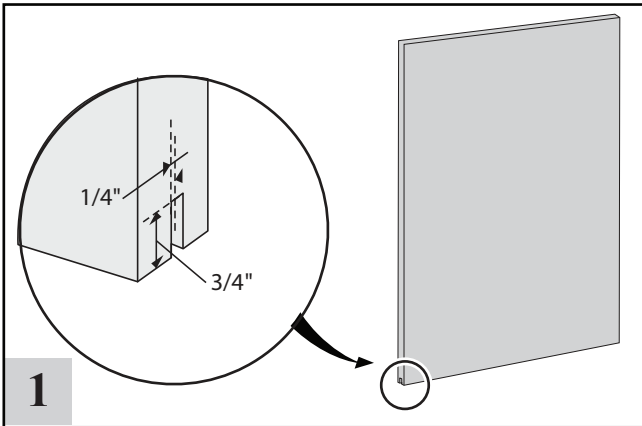
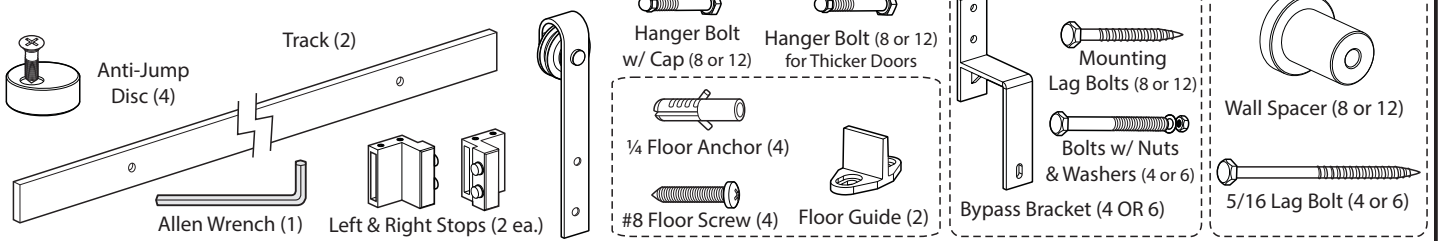
Old World Quality New Age Design

## BARN DOOR BYPASS KIT ASSEMBLY INSTRUCTIONS

### TOOLS REQUIRED

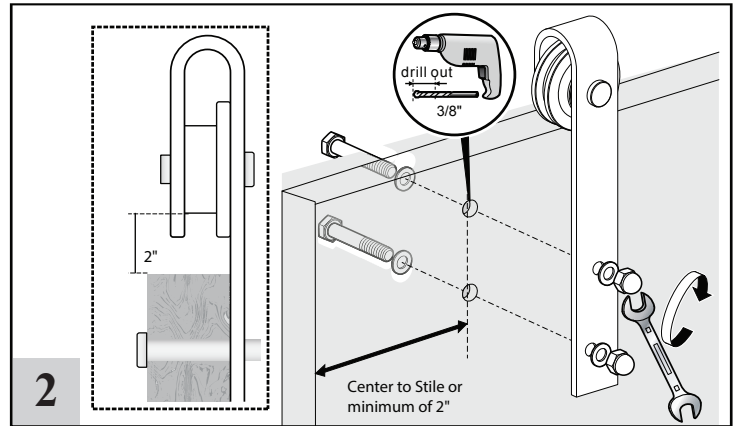


### INCLUDED COMPONENTS



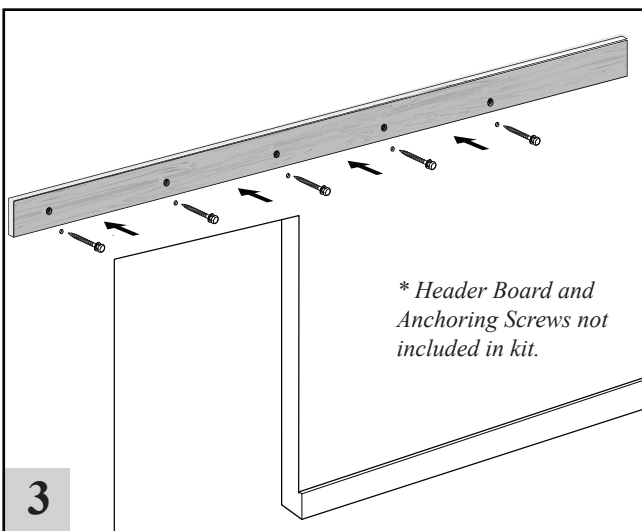
### 1 PREPARE THE DOOR

If using the Floor Guides, mortise a groove  $\frac{1}{4}$ " wide by  $\frac{3}{4}$ " deep into the bottom center of each door's edge.



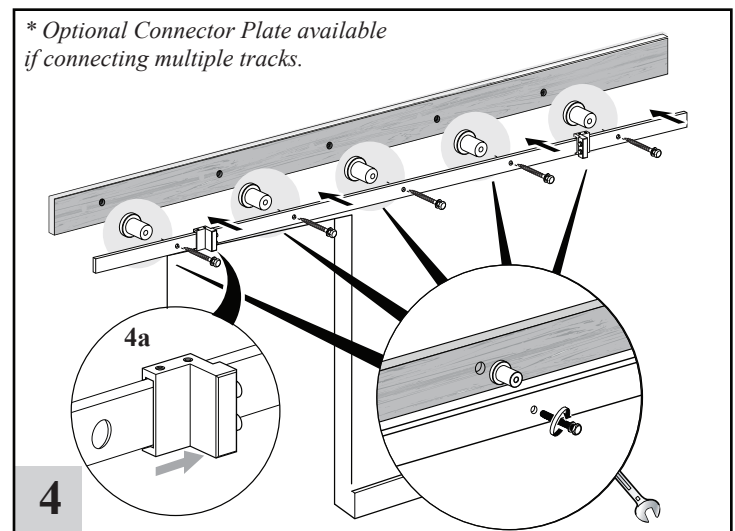
### 2 INSTALL HANGERS

Position hangers on front center of stile (min. 2" from edge of doors, equal on each side). Cut a piece of cardboard 2" high and place between the inner groove of the wheel and the top of the door to correctly position the height of the hangers. Mark holes & pre-drill  $\frac{3}{8}$ " holes. Secure hangers.



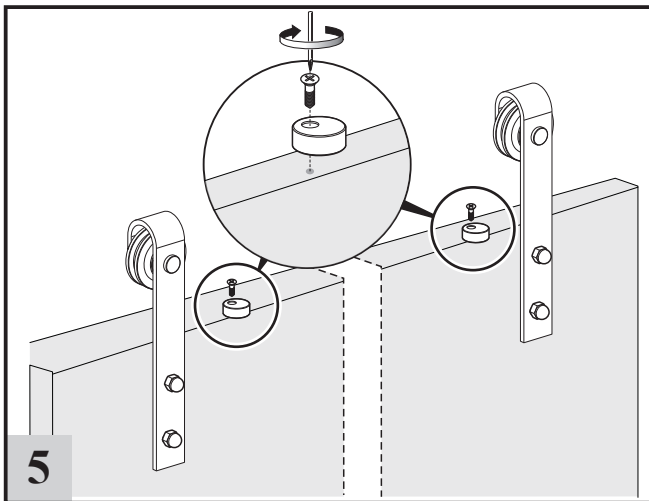
### 3 INSTALL HEADER BOARD

Do not install track directly onto drywall. Install a 1" x 10" Header Board above the door opening directly into studs. Header board must be solid wood and measure at least the full length of the track or longer.



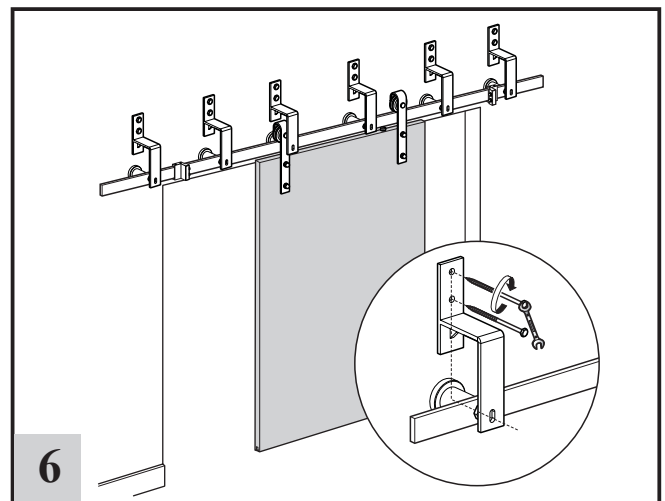
### 4 INSTALL STOPS & TRACK

**4a.** Insert Stops on either side of tracks, inside first & last holes.  
**4b.** Position center of the first track by measuring up from the floor (door height +  $1 \frac{3}{4}$ "). Align Spacers with holes in track. Use Lag Bolts to install track into wood header & wall. Use wrench to secure screws through spacers.



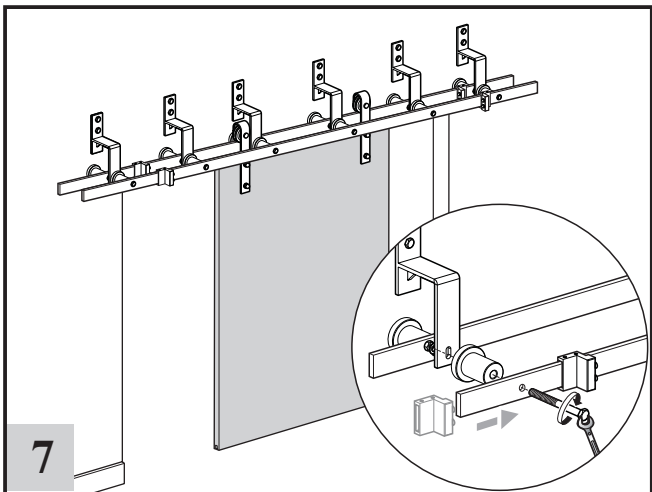
### INSTALLING THE ANTI-JUMP DISCS

Position each Anti-Jump Disc on the top edge of door, at least 1" from the edge of each hanger. Tighten slightly to secure in place.



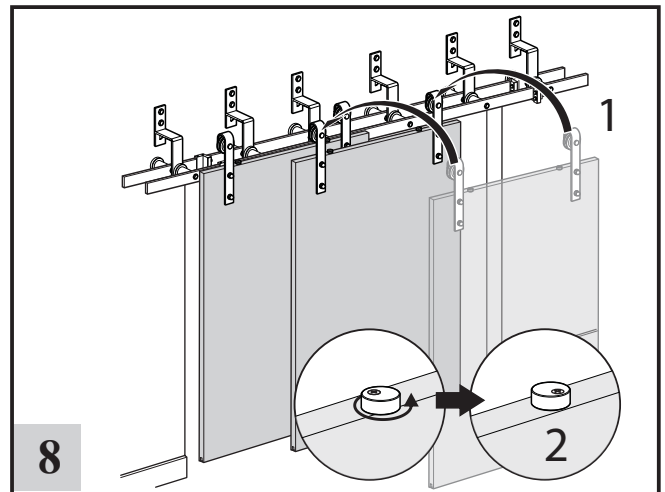
### INSTALL BYPASS BRACKETS

Position the bottom hole of the Bypass Brackets directly in front of the first track's lags and spacers. Mark and predrill top holes for bracket. Attach brackets with lag bolts.



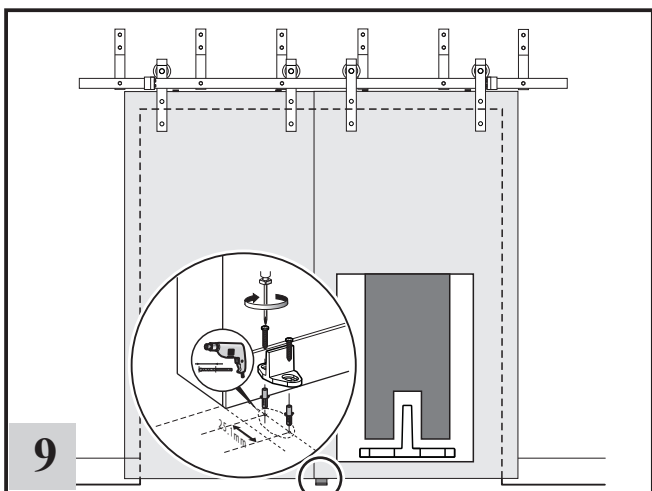
### INSTALL SECOND TRACK

**7a.** Insert Stops on either side of track, inside first & last holes.  
**7b.** Position second track directly in front of first track. Using bolts with washers & nuts, attach second track by sliding the bolts through the track, spacers, and bypass bracket bottom holes, securing with washers & nuts.



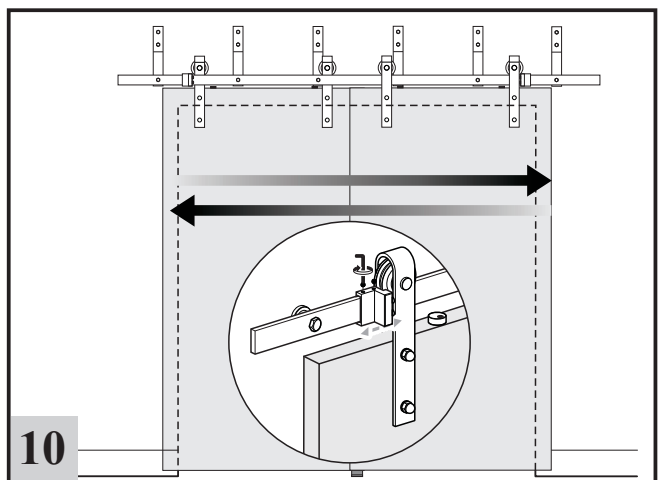
### HANG THE DOORS

Once the doors have been hung on the rails, turn the Anti-Jump Discs to their final positions.



### INSTALL FLOOR GUIDES (OPTIONAL)

Once the doors are plumb, place floor guide inside the groove & line up in desired position depending on application of bypass doors. Mark holes with a pencil. Predrill  $\frac{1}{4}$ " holes. If mounting into concrete floor, use provided anchors.



### INSTALL BYPASS BRACKETS

Secure Stops in desired position with Allen Wrench.