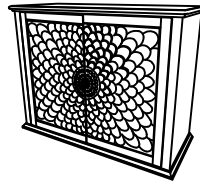
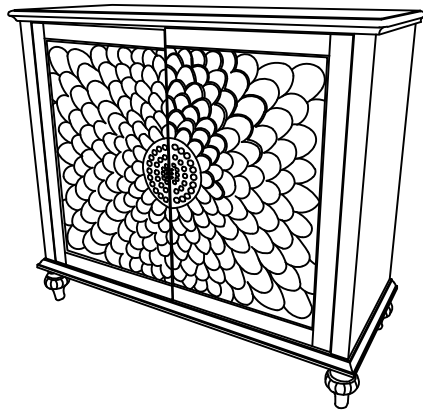
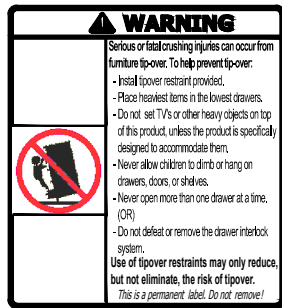




PARTS LIST / LISTE DES PIÈCES / LISTA DE PIEZAS

ITEM NO. / ARTICLE NO. / ARTICULO NO : DS-D229-010

DESCRIPTION / DESCRIPCIÓN : Gray Distressed Carved Door Chest / Commode avec porte / Cómoda con puertas



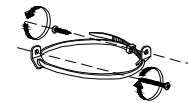
A

x1 Cabinet
x1 Armoire
x1 Armario



B

x4 Foot *
x4 Pied *
x4 Pie *



C

x1 Furniture Tipping Restraint
x1 Systeme antibasculement
x1 Control para evitar vulcos

* Replaceable Part



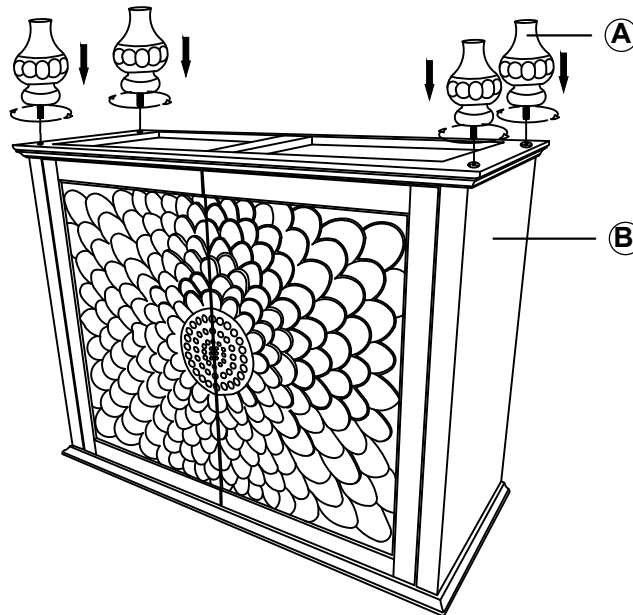
ASSEMBLY INSTRUCTIONS / NOTICE DE MONTAGE / INSTRUCCIONES DE MONTAJE

ITEM NO. / ARTICLE NO. / ARTICULO NO : DS-D229-010

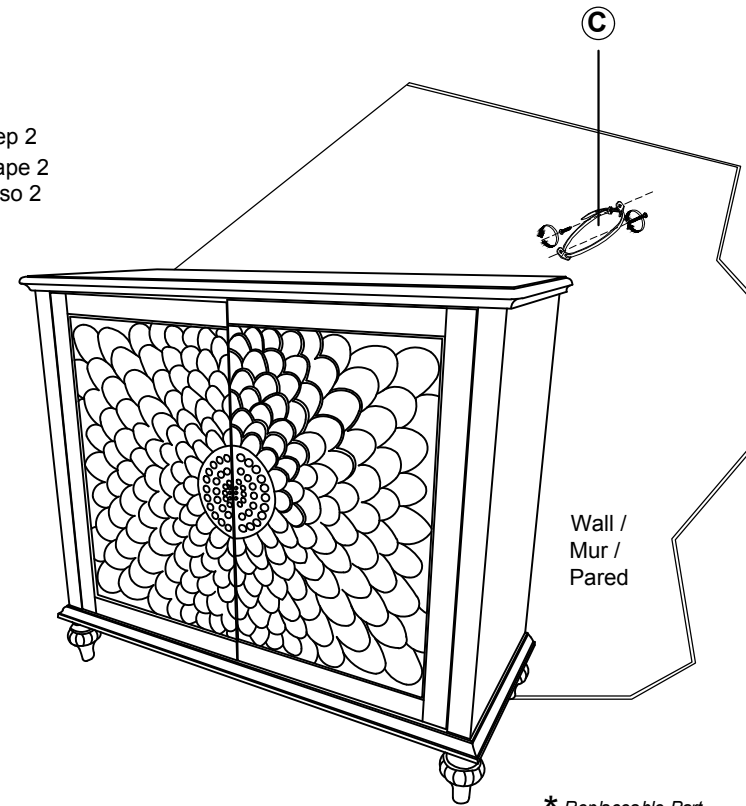
DESCRIPTION / DESCRIPCIÓN : Gray Distressed Carved Door Chest / Commode avec porte / Cómoda con puertas

WARNING	
	Serious or fatal crushing injuries can occur from furniture tip-over. To help prevent tip-over:
	- Install tipover restraint provided.
	- Place heaviest items in the lowest drawers.
	- Do not set TVs or other heavy objects on top of this product, unless the product is specifically designed to accommodate them.
	- Never allow children to climb or hang on drawers, doors, or shelves.
	- Never open more than one drawer at a time. (OR)
	- Do not defeat or remove the drawer interlock system.
	Use of tipover restraints may only reduce, but not eliminate, the risk of tipover.
	<i>This is a permanent label. Do not remove!</i>

Step 1
Étape 1
Paso 1



Step 2
Étape 2
Paso 2





REPLACEABLE PART / PARTIE REMPLACABLE / PARTE REEMPLAZABLE

ITEM NO. / ARTICLE NO. / ARTICULO NO : DS-D229-010

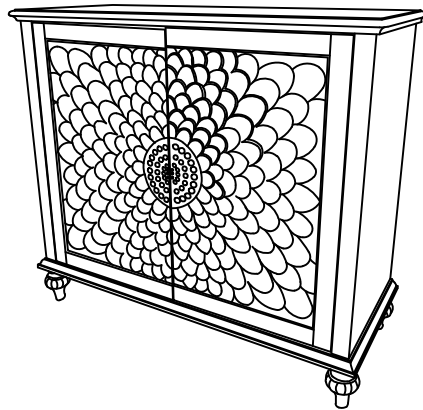

DESCRIPTION / DESCRIPCIÓN : Gray Distressed Carved Door Chest / Commode avec porte / Cómoda con puertas

WARNING

Serious or fatal crushing injuries can occur from furniture tip-over. To help prevent tip-over:

- Install tipover restraint provided.
- Place heaviest items in the lowest drawers.
- Do not set TVs or other heavy objects on top of this product, unless the product is specifically designed to accommodate them.
- Never allow children to climb or hang on drawers, doors, or shelves.
- Never open more than one drawer at a time. (OR)
- Do not defeat or remove the drawer interlock system.

Use of tipover restraints may only reduce, but not eliminate, the risk of tipover.
This is a permanent label. Do not remove!



x4 RD229-010-FOOT-Foot *
Pied
Pie

* Replaceable Part