

3.0 mm | 20 mil & 3.0 mm | 30 mil
LOFTEN™
FLEXIBLE GLUE DOWN

PROSERIES™
LUXURY VINYL FLOORING
daltille



Children's Hospital



SuperGuardX™
REINFORCED SHIELD

3.0 mm | 20 mil & 3.0 mm | 30 mil

LOFTEN™

FLEXIBLE GLUE DOWN

Infuse color and texture into any space with Loften, our expansive luxury vinyl series. Available in a realistic limestone visual and fabric visual with a neutral color palette. The fabric visual also comes in an array of special-order hues that coordinate with our signature Color Wheel™ glazed ceramic collection. The size package consists of modular formats, including 6 x 24, 12 x 24, and 24 x 24 that can be installed together to create patterns. In addition, mix and match sizes and colors for a truly custom design. Look no further for a colorful commercial solution, this series has an ultra-durable 30 mil wear layer for heavy commercial application via the special-order platform. This product line is perfect for education and health care applications.

LIMITLESS POSSIBILITIES

- Limestone & Fabric visuals
- Modular sizes: 6" x 24", 12" x 24" & 24" x 24"
- Fabric accent colors coordinate with our Color Wheel™ Classic glazed ceramic collection
- 3.0 mm Thickness

DURABLE DESIGN

- SuperGuardX™ Technology
- 20 mil wear layer for commercial applications & 30 mil wear layer for heavy commercial application via special order
- 100% Waterproof
- Commercial Grade 100% Virgin Vinyl



Cover photo features Loften™ fabric visuals on the floor and stairs.
Above photo features Loften™ limestone visuals on the floor.

3.0 mm | 20 mil & 3.0 mm | 30 mil

LOFTEN™

FLEXIBLE GLUE DOWN

SIZES:



24 x 24

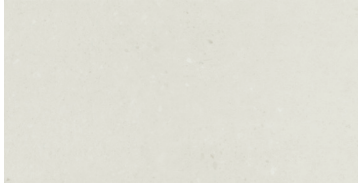


12 x 24



6 x 24

6" x 24" | 12" x 24" | 24" x 24" – LIMESTONE



MINERAL LIMESTONE LF01



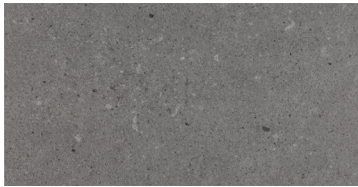
PEBBLE LIMESTONE LF02



SMOKE LIMESTONE LF03

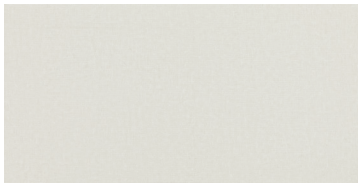


GRAVEL LIMESTONE LF04

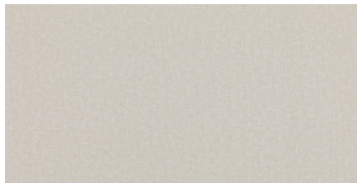


COAL LIMESTONE LF05

6" x 24" | 12" x 24" | 24" x 24" – FABRIC - NEUTRAL COLORS



MINERAL FABRIC LF06



PEBBLE FABRIC LF07



SMOKE FABRIC LF08

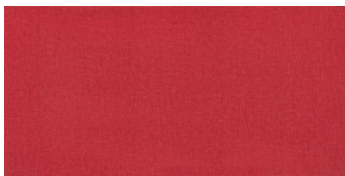


GRAVEL FABRIC LF09

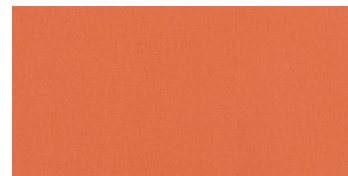


COAL FABRIC LF10

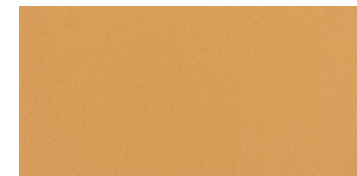
6" x 24" | 12" x 24" | 24" x 24" – FABRIC - ACCENT COLORS – (SPECIAL ORDER)* LOFTEN ACCENT COLORS COORDINATE WITH COLOR WHEEL™ - GLAZED CERAMIC COLLECTION



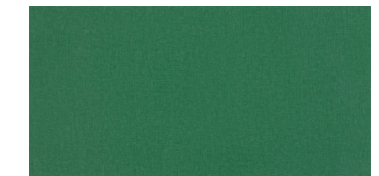
CURRENT FABRIC LF23
*COORDINATES WITH
CURRENT SH17



ORANGE BURST FABRIC LF27
*COORDINATES WITH
ORANGE BURST 1097



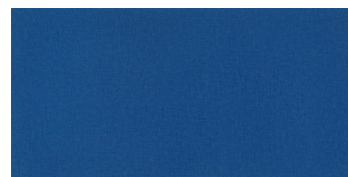
MUSTARD FABRIC LF25
*COORDINATES WITH
MUSTARD 1012



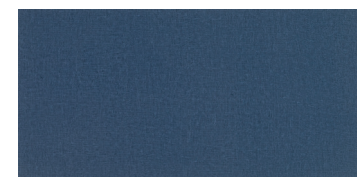
EMERALD FABRIC LF26
*COORDINATES WITH
EMERALD 0115



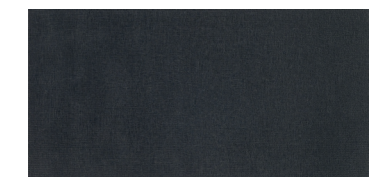
SPA FABRIC LF28
*COORDINATES WITH
SPA 0148



SEA BREEZE FABRIC LF22
*COORDINATES WITH
SEA BREEZE 1174



GALAXY FABRIC LF24
*COORDINATES WITH
GALAXY 1469



BLACK FABRIC LF21
*COORDINATES WITH
BLACK K111

3.0 mm | 20 mil & 3.0 mm | 30 mil
LOFTEN™
 FLEXIBLE GLUE DOWN



NOISE REDUCING



EASY TO CLEAN



100% WATERPROOF



100% VIRGIN VINYL

SPECIFICATIONS	3.0 mm 20 mil	*3.0 mm 30 mil	
Product Type:	LVF Dry Back	LVF Dry Back	
Installation:	Glue Down	Glue Down	
Thickness:	3.0 mm	3.0 mm	
Wear Layer:	20 mil (0.508 mm)	30 mil (0.762 mm)	
Finish:	SuperGuard X™ Technology	SuperGuard X™ Technology	
Underlayment:	N/A	N/A	
Bevel:	Micro-Bevel	Micro-Bevel	
Embossing:	Embossed	Embossed	
Plank Variation:	N/A	N/A	

Size:	6 x 24	12 x 24	24 x 24
Sq. Ft./Carton:	36	36	36
Pieces/Carton:	36	18	9
Weight:	1.04 lbs per pc / *1.03 lbs per pc 37.44 lbs per carton / *37.08 lbs per carton	2.08 lbs per pc / *2.06 lbs per pc 37.44 lbs per carton / *37.08 lbs per carton	4.16 lbs per pc / *4.12 lbs per pc 37.44 lbs per carton / *37.08 lbs per carton

Warranty:	Limited Lifetime Residential Warranty Limited 15 Year Multifamily Warranty Limited 15 Year Light Commercial Warranty Limited 15 Year Commercial Warranty	Limited Lifetime Residential Warranty Limited 30 Year Multifamily Warranty Limited 30 Year Light Commercial Warranty Limited 20 Year Commercial Warranty Limited 10 Year Heavy Commercial Warranty
-----------	---	--

Installation Advisory: Glue Down LVF must be installed using ProSeries™ Adhesive
 See daltile.com/LVF for more recommended installation and adhesive information.

Stocking Platform and Colors:	3mm 20 mil: Neutral Fabric and Limestone Colors
* Special Order Platform and Colors:	3 mm 20 mil: Accent Colors Fabric 3 mm 30 mil: Neutral Fabric and Limestone colors 3 mm 30 mil: Accent Colors Fabric Minimum order: one full pallet Additional Platforms available on special order. Minimum order quantities apply. Contact your Daltile representative for additional information.
* Special Order Transitions:	Slim Trim 4-in-1 Transition, Extra Tall Stair Nose, Full Round Stair Tread, Round Stair Nose, Quarter Round, and Slim Cap

PERFORMANCE & CHARACTERISTICS

Construction:	Commercial Grade Luxury Vinyl Flooring; 100% Virgin Vinyl
Classification:	Class III, Type B Embossed
Squareness:	ASTM F2421 - Passes - +- 0.010" max
Size and Tolerance:	ASTM F2421 - Passes +-0.016 in./linear foot
Thickness:	ASTM F386 - Passes - Pass & A tolerance of ±0.13mm
Flexibility:	ASTM F137 - Passes - 1" mandrel
Dimensional Stability:	ASTM F2199 - Passes - 0.020 in./ lin Ft (0.51mm/305 mm) Maximum
Static Load Limit:	ASTM F970 - Passes
Residual Indentation:	ASTM F1914 - Passes - Average ≤8% Max ≤10%
Resistance To Chemicals:	ASTM F925 - Passes - No more than a slight change
Resistance To Light:	ASTM F1515 - Passes - ΔE ≤ 8
Resistance To Heat:	ASTM F1514 - Passes - ΔE ≤ 8
Critical Radiant Flux:	ASTM E648 - Passes - Class 1 (> 0.45 W/cm²)
Smoke Density:	ASTM E662 Part A - Passes - < 450

NOTES
 See daltile.com/LVF for recommended installation and care guidelines.



CERTIFIED BY SCS Global Services

7834 C.F. Hawn Freeway,
 Dallas, Texas 75217 | 1.800.933.TILE

To view the complete collection of Daltile® products and information, visit our website at daltile.com/LVF

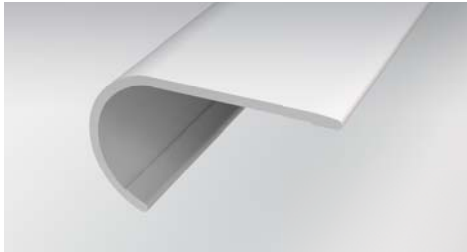


©2024 Dal-Tile, LLC (4/24)

Six trims and moldings that are designed to coordinate with each of our existing colors within the collection.

- | | |
|---|--|
| VRDSN: Round Stair Nose (1-3/4" x 94") | EXTSN: Extra Tall Stair Nose (2" x 94") |
| VQRND: Quarter Round (3/4" x 94") | RNDSTRD: Full Round Stair Tread (12-1/5" x 50") |
| VSLCAP: Slim Cap, Low Profile End Cap (1-3/8" x 94") | SLIMIT: Slim Trim 4-in-1 Transition (2" x 94") , Four unique trims and moldings in one single SKU (T-Molding, Hard Surface Reducer, Carpet Transition, End Cap) |

SPECIAL ORDER ITEMS:



Round Stair Nose

Creates a transition to the edge of the step by overlapping the flooring on the back end. Can also be installed flush on floors with an overall thickness up to 4 mm.*



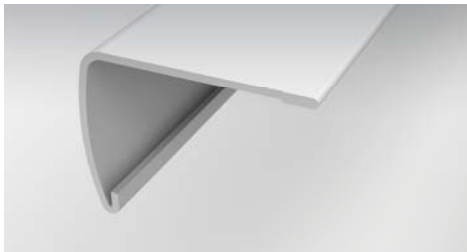
Quarter Round

Conceals the expansion space between the wall and the flooring.



Slim Cap

Low profile end cap used to transition from flooring to carpet, masonry, sliding doors, and other exterior door jambs.



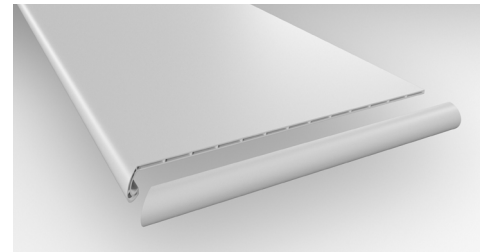
Extra Tall Stair Nose

Creates a transition to the edge of the step by overlapping the flooring on the back end. Can also be installed flush on floors with an overall thickness up to 4 mm.*



Slim Trim 4-in-1 Transition

Performance Accessories' exclusive 4-in-1 transition allows you to utilize a single transition for four different applications.



Full Round Stair Tread

A vinyl stair tread with pre-attached stair nosing. Can be used on steps with or without nosing.

EACH OF THE BELOW ARE ACHIEVED VIA THE SLIM TRIM 4-IN-1 TRANSITION (SHOWN ABOVE)



T-Molding

Used to transition between flooring of equal heights and in doorways.



Hard Surface Reducer

Connects two floors of different heights.



End Molding

Finishing up to a threshold, sliding door, etc.



Carpet Transition

Provides a smooth transition between your hard surface floor & carpet. A carpet tap down trim must be used & is sold at your local hardware store.



*References to flooring thickness refer to the total thickness of all members of the floor installation being laid upon the subfloor. This typically is comprised of the flooring plank, e.g. Vinyl or Laminate, the underlayment, either attached or loose lay and any additional vapor barriers.

