



PROSERIES LUXURY VINYL FLOORING

INSTALLATION & CARE GUIDE

RIGID CORE CLICK

HERRINGBONE

Daltile | Dal-Tile Corporation
7834 C.F. Hawn Freeway
Dallas, TX 75217

TECHNICAL SERVICES
1.800.933.TILE



Product Description	Grade Levels	Installation Method
Rigid Luxury Vinyl Flooring	Above, On and Below	Click Lock

KEY INSTALLATION CONSIDERATIONS

- Daltile® ProSeries™ LVF Rigid Click is intended for interior use only and is suitable for applications above, on, and below grade. **DO NOT** install in any outside areas, saunas, seasonal porches, camping trailers, boats, RVs, lanais, rooms that are prone to flooding, or rooms or homes that are not temperature-controlled.
- ProSeries LVF Rigid Click is a floating floor and should be allowed to expand and contract freely. It must not be glued, nailed, or fastened to the subfloor in any way. Permanent cabinets, vanities, islands and similar items should be installed first. Then, install the Rigid Click LVF around them, leaving the proper expansion gap. The product can be installed under vanities with legs and under toilets. Leave proper expansion space around the flange and use a premium waterproof 100% silicone caulk. Do not anchor toilet through the material.
- ProSeries LVF Rigid Click is a waterproof floating floor, but it should not be used to seal an existing floor from moisture. It does not inhibit the growth of mold or prevent structural problems associated with or caused by flooding, excessive moisture, alkalis in the subfloor or conditions arising from hydrostatic pressure. Regardless of location, always remove standing water and other liquids promptly. Job site moisture issues should be addressed and corrected prior to installation. Fill expansion spaces around potential wet areas only with premium waterproof 100% silicone caulk.
- Long-term exposure to direct sunlight can potentially damage flooring, causing it to discolor, fade or buckle. Protect LVF from exposure to direct sunlight via the use of window treatments or UV-tinting on windows.

- If the flooring is to be installed by a third party, then it is suggested that the homeowner be present during the installation for consultation and/or direction. The owner and installer should discuss installation and layout to maximize satisfaction. If this is not possible, consultation should occur prior to installation. The owner/installer assumes all responsibility for quality of completed installation.

BEFORE STARTING

- Before beginning a ProSeries LVF Rigid Click installation project, it is critical that you 1) fully acquaint yourself with the detailed installation instructions for your specific flooring and subfloor type, and 2) conduct a complete job site evaluation.
- For proper installation, please review this guide in its entirety.
 - Make a complete job site evaluation to assure that environmental conditions are acceptable for LVF. Room temperature conditions must be controlled between 50°F and 80°F 48 hours before, during and after installation. Product must be acclimated in this controlled environment for a minimum of 48 hours prior to installation, and stacked no more than 5 cartons high on a flat surface and away from any heating or cooling ducts or direct sunlight. For more detail, please reference the “Installation Prep” section of this guide.
 - Determine the quantity of ProSeries LVF Rigid Click and flooring transitions needed for your installation. It is recommended that you add an additional 10% to your square footage for standard installations to account for cuts. For diagonal installations, add 15%.
 - Make sure you have the appropriate installation tools. A list of recommended installation tools can be found in the “Tools Required for Installation” section of this guide.

Product Description	Grade Levels	Installation Method
Rigid Luxury Vinyl Flooring	Above, On and Below	Click Lock

TOOLS REQUIRED FOR INSTALLATION

- ✓ Tape Measure

✓ Utility Knife

✓ Eye Protection

✓ Gloves

✓ Tapping Block

✓ Soft Faced Hammer

✓ Pull Bar

✓ Miter or Circular Saw

✓ Carpenter’s Square

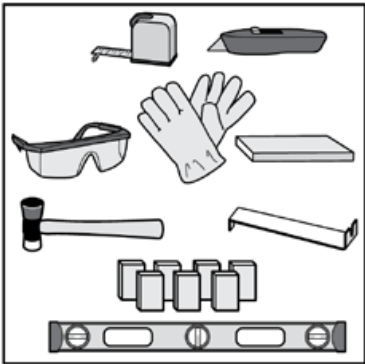
✓ Square Ruler
- ✓ Chalk Line

OPTIONAL:

✓ Reciprocating Saw

✓ 1/4” Spacers

✓ Level



SITE PREPARATION

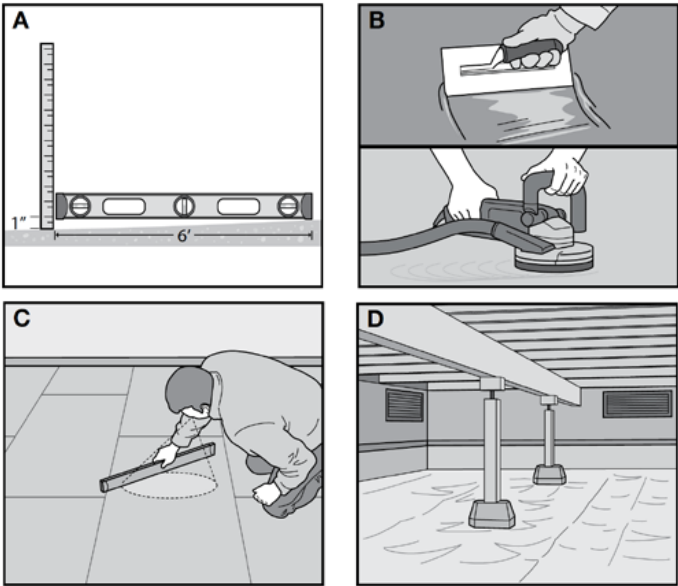
Prior to installation, the homeowner or installer must ensure that job site conditions (including subfloor or substrate, ambient temperature and relative humidity) will not negatively affect the floor. The manufacturer is not responsible for damages associated with improper installation or poor site conditions.

A. The surface of the subfloor must be flat. The flatness requirement is defined as follows: the maximum difference between two high points and the intermediate low point is 1/4” in a 10’ radius. Surface flatness must not vary more than 1/16” when measured with a 3’ straight edge. Additionally, the subfloor must not slope more than 1” in 6’.

B. High areas can be sanded, ground down or floated over with an approved self-leveling compound. Fill excessive voids or low areas using a non-gypsum, cementitious based leveling compound. Allow the leveling compound to dry thoroughly before beginning the LVF installation. Follow the manufacturer’s instructions to ensure leveling compound is appropriate for the application.

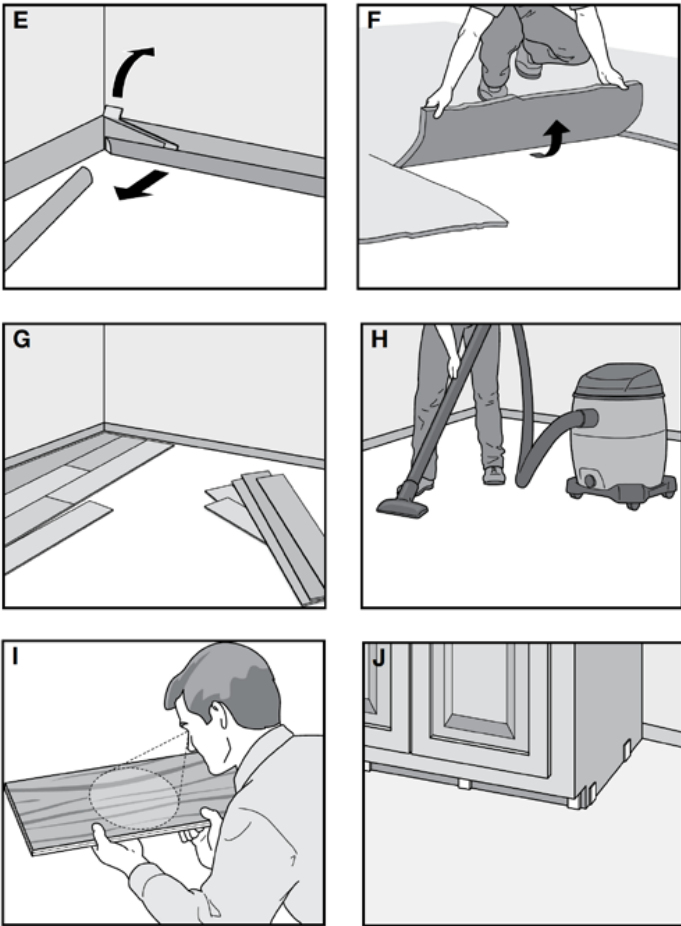
C. Subfloors must be structurally sound without deflection. Cartons should be evenly stacked no more than five cartons high on a flat surface and away from any heating or cooling ducts or direct sunlight.

D. Crawl Spaces: Concrete slab or ground must be dry. Ensure that crawl spaces have open vents year round to ensure proper air circulation and prevent moisture build-up. The ground in the crawl spaces must be completely covered using 6 mil polyethylene. Crawl space clearance between the earth and underside of joists should be no less than 18” (45.7cm), and the perimeter vent area should be equal to 1.5% of the total square footage of the crawl space or as mandated by code. Insulate and protect crawl space with a vapor barrier.



Product Description	Grade Levels	Installation Method
Rigid Luxury Vinyl Flooring	Above, On and Below	Click Lock

- E. Carefully remove any existing quarter round or base board molding.
- F. Always remove carpet, carpet pad and tack strips.
- G. Remove any existing floating or un-adhered flooring.
- H. Be sure the surface of the subfloor is flat, clean, dry, and sound before starting.
- I. Inspect every plank for any shipping damage when removing from the carton.
- J. Kitchen cabinets must be installed before the floor is installed. Do not install cabinets on top of ProSeries LVF Rigid Click flooring.



APPROVED SUBFLOORS

Concrete, plywood, OSB, particleboard, chipboard, hardwood (solid, engineered, parquet), tile (ceramic, terrazzo, stone, peel and stick), non-cushion sheet vinyl, metal, VCT and DRIcore are acceptable substrates. All subfloor requirements noted below must be met prior to the installation of ProSeries LVF Rigid Click Flooring.

CONCRETE SUBFLOOR PREP

- New and existing concrete subfloors should meet the guidelines of the latest edition of ACI 302 and ASTM F 710, "Standard Practice for Preparing Concrete Floors for Receiving Resilient Flooring," available from the American Society for Testing and Materials.
- Perform moisture tests at locations around exterior doorways, near walls containing plumbing, near foundation walls and in the center of the room.
- High spots can be removed by grinding. Depressions can be filled with patching compound formulated for use in floor installation.
- Newly-laid concrete slabs must cure for at least 90 days prior to installation.
- Concrete can be either sealed or unsealed.
- Moisture levels of concrete slabs before, during and after installation must be ≤ 8lbs/1000ft2/ 24-hr using an anhydrous calcium chloride test according to ASTM F1869, and pH must be between 5.0 and 9.0; or, if using ASTM F2170 in-situ probes, relative humidity should be less than 90%. Always measure, record, and retain your testing results.

WOOD SUBFLOORS

- (Plywood, OSB, Particleboard, Chipboard, Solid Hardwood, Luan)
- Wood subfloors must be APA approved with a minimum grade of BB or CC. (For reference, APA refers to the American Plywood Association, now known as the Engineered Wood Association).
 - Double-layered APA rated wood subfloors should be a minimum 1" total thickness, with at least 18" well-ventilated air space beneath.

Product Description	Grade Levels	Installation Method
Rigid Luxury Vinyl Flooring	Above, On and Below	Click Lock

- Perform moisture tests using a reliable moisture meter in multiple locations. Moisture readings should never exceed 14% for plywood, OSB, particleboard, chipboard or solid hardwood subfloors. If moisture readings exceed 14%, conditions must be corrected at the job site before installation.
- It is recommended that your chosen APA underlayment be designed for installation under resilient flooring and carry a written warranty.
- Always follow the underlayment manufacturer’s installation instructions.
- Wood subfloors directly fastened to concrete, or sleeper construction, are not recommended.

OTHER SUBFLOOR PREP

- Adhered and sound vinyl sheet goods, vinyl tiles, linoleum and resilient (VCT) tiles usually do not need to be removed if they are fully bonded and free of any notable damage. Some older vinyl sheet goods and tile contain asbestos. Should existing flooring contain asbestos, special precautions must be taken for your safety. Contact a professional immediately for inspection and removal.
- Ceramic tiles and terrazzo usually do not need to be removed. Grout joints wider than ¼" must be filled. LVF may be installed directly over ceramic tiles and terrazzo, provided they are fully adhered, smooth, sound and dry. These flooring materials must be smooth and flat to within 1/4" in a 10' radius and must not vary more than 1/16" when measured with a 3' straight edge.
- Do not install over more than one layer of existing vinyl.

RADIANT FLOORING HEATING PREP

- After market radiant heated floors must be approved by the manufacturer for use with resilient flooring applications.
- The subfloor temperature be between 45°F and 85°F.

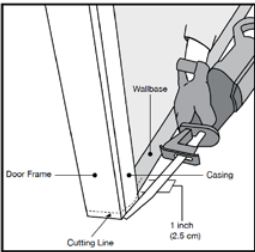
SUBFLOORS NOT APPROVED

- Carpeting/Carpet Pad
- Cushioned Vinyl Flooring
- Floating Floors
- Laminate
- Parquet Over Concrete
- Cork
- Engineered Hardwood Over Concrete
- Sleeper Substrates
- Hardwood Over Concrete
- Rubber

NOTE: Remove the floors listed above and remove old adhesive before installing LVF.

INSTALLATION PREPARATION

- ProSeries LVF Rigid Click is intended for indoor use only.
- Room temperature conditions must be controlled between 50°F and 80°F and humidity below 65% for 48 hours before, during and after installation. Product must be acclimated in this controlled environment for a minimum of 48 hours prior to installation, and stacked no more than 5 cartons high.
- A 3/8" (9mm) expansion space must be maintained around the perimeter of the room and any fixed objects such as pipes or columns.
- Use approved safety equipment to provide proper protection based on each given task.
- Door-jambs and casings must be undercut so that the plank can slide underneath. A 1/4" (6 mm) expansion space must also be included around the undercut jambs and casings. A reciprocating saw is recommended to create the necessary undercut. Never undercut metal door casings. **Cutting Tip:** To undercut the casting, lay a scrap piece of flooring next to the casting and lay the saw flat on top of the flooring so that the saw easily cuts to the height of the plank.



Product Description	Grade Levels	Installation Method
Rigid Luxury Vinyl Flooring	Above, On and Below	Click Lock

IMPORTANT: Always inspect each plank to ensure it is not damaged prior to installation. Check the tongue and groove to ensure both are free of debris or damage.

- It is recommended to blend flooring from multiple cartons during installation.
- Cartons should be evenly stacked no more than five cartons high on a flat surface and away from any heating or cooling ducts or direct sunlight.
- Excess flooring should be stored in a protected and climate controlled environment for possible future repairs.
- The HVAC system must be on and functional before, during and after installation.
- Power tools can be dangerous. Operate in strict accordance with manufacturer’s operating instructions and safety precautions. Unsafe and improper use can cause serious injuries. Avoid inhalation and exposure to airborne particles by wearing personal protective equipment, including: NIOSH or OSHA approved dust masks, safety goggles and work gloves.

CLICK LOCK INSTALLATION

Inspect each plank. Blend planks from several cartons at the same time to ensure good color and shade mixture throughout the installation.

A floating installation is normally used for this type of floor covering. The bottoms of the door frames have to be trimmed. It is important to plan the installation before starting it. Proper planning will prevent very narrow pieces against walls and/or short pieces at the ends of the rows.

Every box of flooring contains the same number of left and right-handed machined pieces.

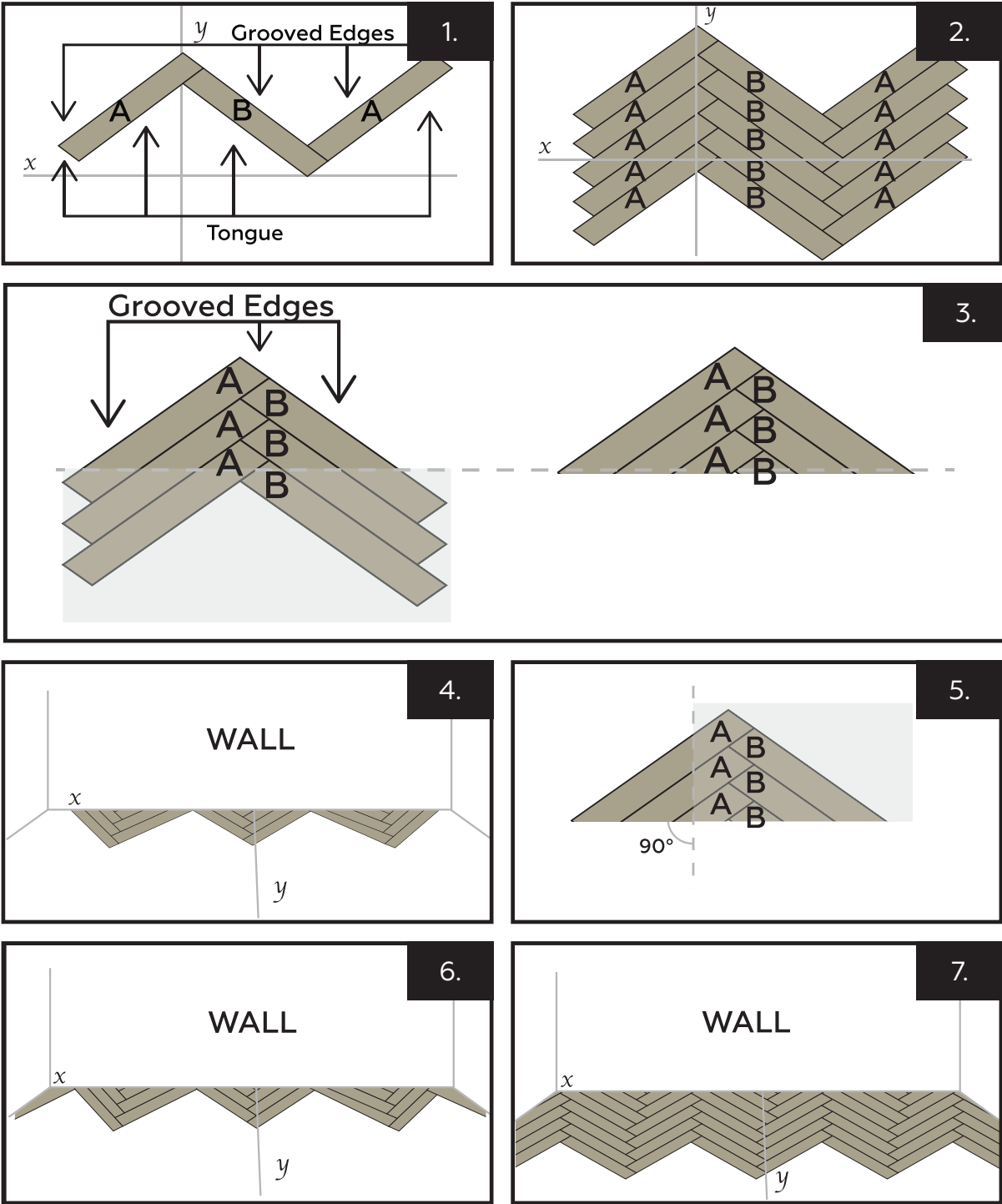
1. Before starting the installation, we recommend stacking the material in two columns - the A pieces and the B pieces.

2. The herringbone installation system should typically be started from a central axis using a chalk line or marking straight lines from the center of the room.
Mark the "X" axis and then mark a second line that is perpendicular to the first one, creating a 90° intersection to create the "Y" axis. This process is essential and a good way of checking that all of the angles and measurements are correct at this point, before you start installing the first boards.
1. Start installing the first three boards, so that the corner of each piece coincides with the "Y" axis, as shown in the diagram. Continue installing by starting with the grooved edges towards you.
2. Use the "Y" line as a guide when installing.
3. When the installation is stable enough, cut out the triangle as shown in the image.
4. Place the first triangle in line with the "Y" axis that marks the center of the room. Repeat the same process with the other triangles until you reach the side walls. Remember to take into account the 10 mm perimeter joint between the pieces and the wall.
5. The sections on the sides where a full triangle cannot be placed should be cut down to the necessary size.
6. When the initial wall is covered, continue with the installation by following the lines that were marked earlier on the floor.
7. Continue installing from left to right, across the room until you have finished.

This product uses a LOCK installation system, following the "angle snap" method.

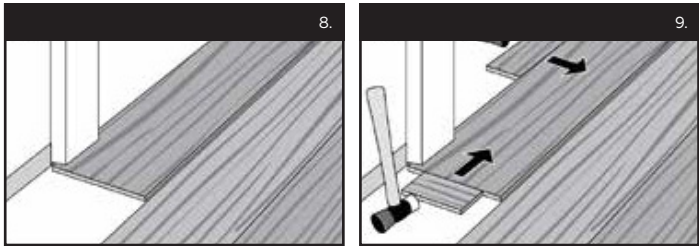
Use the pull bar or chisel to install the pieces at each end of the installation. When installing each piece, avoid hitting the machined profile so that you don't damage it.

Product Description	Grade Levels	Installation Method
Rigid Luxury Vinyl Flooring	Above, On and Below	Click Lock



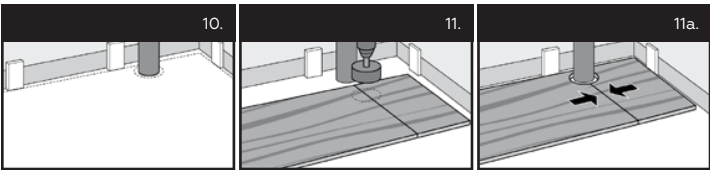
Product Description	Grade Levels	Installation Method
Rigid Luxury Vinyl Flooring	Above, On and Below	Click Lock

8. When the new flooring meets a threshold or a doorway, we recommend undercutting the door jamb. To secure the right cut, turn a plank upside down and place it on the floor up to the door frame. Then place a reciprocating saw flat against the plank and simply cut through the frame. Remove the cut-out piece and vacuum away debris. Slide plank under pre-cut door frame. Door frame should be cut so that a 3/8" (9mm) gap is located from the edge of the plank under the casing to the wall.
9. Tap the long side joint closed first, then tap the end joint closed.



10. In place of a resilient tile cutter, a miter or circular saw with the blade cutting into the design of the planks can be used to cut the rigid luxury vinyl floors. A utility knife can also be used, scoring the top of the pattern and snapping the plank. It will be necessary to cut the foam underlayment after snapping the plank.

NOTE: Maintain a 3/8" (9mm) expansion space around all walls and vertical objects. Quarter round or baseboard molding will cover this expansion space.



- INSTALLING AROUND FIXED OBJECTS**
11. Allow 3/8" (9mm) expansion space around pipes or other fixed objects.
12. In rows where there is a pipe, make sure the pipe falls exactly in line with the short side of two planks. Select a drill bit with the same diameter as the pipe plus 1/2" (13 mm). Click the planks together on the short side and drill a hole centered on the joint between the two planks. Then install the planks.
13. For a double pipe, drill a hole equivalent to the diameter of the pipe plus 1/2" (13 mm) at each of the marked points. If located on the long side of the plank, make a 45° cut from each hole to the edge of the plank. Then, using an appropriate glue along the cut edges of the piece you cut out, glue the piece in place. Be sure no glue comes between the cut-out piece and the subfloor.
14. Remove all spacers.
15. Fill any expansion spaces around potentially wet areas, such as refrigerators, tubs, etc., with premium waterproof 100% silicone caulk.
16. When installing LVF in any room or area larger than 100 lineal feet (30.5 m) in any direction, the use of a coordinating T-Molding/Reducer transition is required to separate the floor into sections no larger than 100' x 100' (30.5 m x 30.5 m) per section.
17. Install moldings to cover the expansion gap. When installing moldings, never allow nails or screws to enter the LVF or the expansion zone around the flooring perimeter. All moldings and transition strips need to provide a 3/8" (9mm) expansion space as well.

NOTE: Maintain the 3/8" expansion gap around cabinets, pipes, toilet flanges and any obstacles in the floor (it is not recommended to trim around a toilet, however leave the expansion space around the toilet flange).

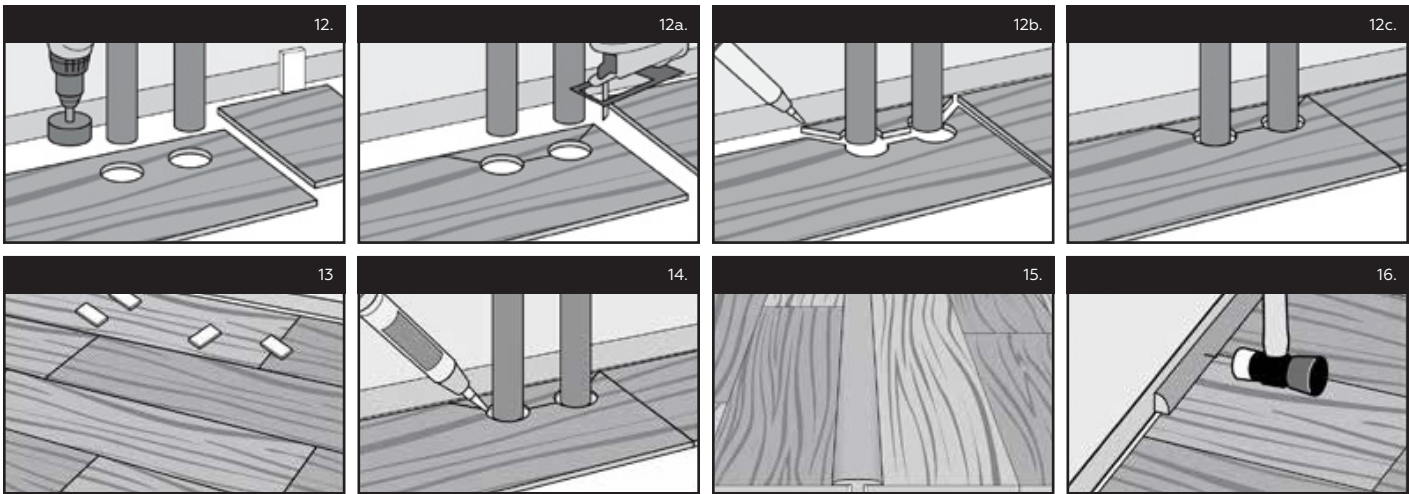
PROSERIES LUXURY VINYL FLOORING

INSTALLATION & CARE GUIDE

[CLICK INSTALLATION](#)



Product Description	Grade Levels	Installation Method
Rigid Luxury Vinyl Flooring	Above, On and Below	Click Lock



CARING & CLEANING

PREVENTATIVE MAINTENANCE

- Prevent indentations and scratches by using non-staining floor protectors on the legs of chairs, appliances and all heavy furniture. Floor protectors should be at least 1" in diameter. Periodically clean protectors to remove grit that may become embedded and cause scratching.
- Replace plastic or metal chair casters with rubber, and keep casters clean.
- Place walk-off mats at entrances. Mats should have a non-rubberized backing and be labeled as nonstaining.
- We recommend the use of a hard surface (non-studded), non-rubber chair mat to protect your floor from office chairs with casters. Light, rolling furniture should be outfitted with broad-surface, non-staining casters that have been engineered for hard surface floors. Such casters should be a minimum of 1" (2.5 cm) wide and at least 2" (5.1 cm) in diameter.
- Avoid exposure to direct sunlight for prolonged periods of time, as this can cause discoloration. Use of window coverings is recommended.
- Keep pets' nails trimmed.
- Remove shoes with cleats, spikes, or pointed high heels before walking on the floor.

- Protect your floors against burns. Burns from cigarettes, matches or other extremely hot items can cause permanent damage to your luxury vinyl flooring.

CLEANING

- Sweep the floor regularly with a soft bristle broom to remove loose dirt.
- Wash the floor with non-abrasive, neutral PH floor cleaner approved for vinyl floors.
- For every day cleaning, a mop moistened with warm water will suffice.
- Spills should be cleaned up immediately.

CLEANING AGENTS TO AVOID

- Detergent based cleaners
- Abrasive or mop and shine products
- Ammonia or bleaches
- Vacuum cleaner with a rotating beater bar engaged
- Floor wax

NOTE: Always read the cautionary information on all cleaners prior to use.

IMPORTANT: Never push, pull or drag furniture, appliances or other items across the floor. Always lift and carry furniture or heavy items.



PROSERIES LUXURY VINYL FLOORING

INSTALLATION & CARE GUIDE

RIGID CORE CLICK

Daltile | Dal-Tile Corporation
7834 C.F. Hawn Freeway
Dallas, TX 75217

TECHNICAL SERVICES
1.800.933.TILE

PROSERIES LUXURY VINYL FLOORING

INSTALLATION & CARE GUIDE

[CLICK INSTALLATION](#)



Product Description	Grade Levels	Installation Method
Rigid Luxury Vinyl Flooring	Above, On and Below	Click Lock

KEY INSTALLATION CONSIDERATIONS

- Daltile® ProSeries™ LVF Rigid Click is intended for interior use only and is suitable for applications above, on, and below grade. **DO NOT** install in any outside areas, saunas, seasonal porches, camping trailers, boats, RVs, lanais, rooms that are prone to flooding, or rooms or homes that are not temperature-controlled.
- ProSeries LVF Rigid Click is a floating floor and should be allowed to expand and contract freely. It must not be glued, nailed, or fastened to the subfloor in any way. Permanent cabinets, vanities, islands and similar items should be installed first. Then, install the Rigid Click LVF around them, leaving the proper expansion gap. The product can be installed under vanities with legs and under toilets. Leave proper expansion space around the flange and use a premium waterproof 100% silicone caulk. Do not anchor toilet through the material.
- ProSeries LVF Rigid Click is a waterproof floating floor, but it should not be used to seal an existing floor from moisture. It does not inhibit the growth of mold or prevent structural problems associated with or caused by flooding, excessive moisture, alkalis in the subfloor or conditions arising from hydrostatic pressure. Regardless of location, always remove standing water and other liquids promptly. Job site moisture issues should be addressed and corrected prior to installation. Fill expansion spaces around potential wet areas only with premium waterproof 100% silicone caulk.
- Long-term exposure to direct sunlight can potentially damage flooring, causing it to discolor, fade or buckle. Protect LVF from exposure to direct sunlight via the use of window treatments or UV-tinting on windows.

- If the flooring is to be installed by a third party, then it is suggested that the homeowner be present during the installation for consultation and/or direction. The owner and installer should discuss installation and layout to maximize satisfaction. If this is not possible, consultation should occur prior to installation. The owner/installer assumes all responsibility for quality of completed installation.

BEFORE STARTING

- Before beginning a ProSeries LVF Rigid Click installation project, it is critical that you 1) fully acquaint yourself with the detailed installation instructions for your specific flooring and subfloor type, and 2) conduct a complete job site evaluation.
- For proper installation, please review this guide in its entirety.
 - Make a complete job site evaluation to assure that environmental conditions are acceptable for LVF. Room temperature conditions must be controlled between 50°F and 80°F 48 hours before, during and after installation. Product must be acclimated in this controlled environment for a minimum of 48 hours prior to installation, and stacked no more than 5 cartons high on a flat surface and away from any heating or cooling ducts or direct sunlight. For more detail, please reference the “Installation Prep” section of this guide.
 - Determine the quantity of ProSeries LVF Rigid Click and flooring transitions needed for your installation. It is recommended that you add an additional 10% to your square footage for standard installations to account for cuts. For diagonal installations, add 15%.
 - Make sure you have the appropriate installation tools. A list of recommended installation tools can be found in the “Tools Required for Installation” section of this guide.

Product Description	Grade Levels	Installation Method
Rigid Luxury Vinyl Flooring	Above, On and Below	Click Lock

TOOLS REQUIRED FOR INSTALLATION

- ✓ Tape Measure

✓ Chalk Line

✓ Utility Knife

OPTIONAL:

✓ Eye Protection

✓ Reciprocating Saw

✓ Gloves

✓ 1/4" Spacers

✓ Tapping Block

✓ Level

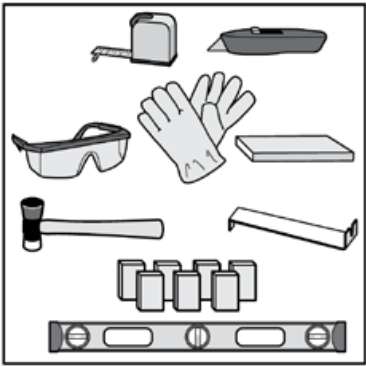
✓ Soft Faced Hammer

✓ Pull Bar

✓ Miter or Circular Saw

✓ Carpenter's Square

✓ Square Ruler



SITE PREPARATION

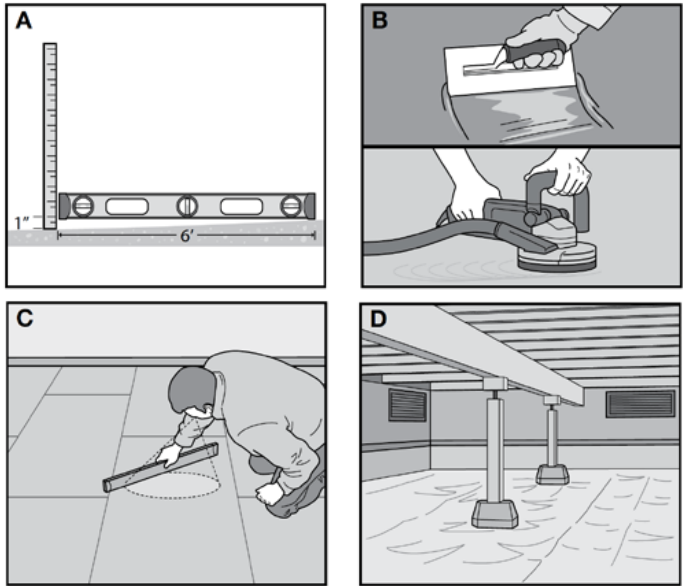
Prior to installation, the homeowner or installer must ensure that job site conditions (including subfloor or substrate, ambient temperature and relative humidity) will not negatively affect the floor. The manufacturer is not responsible for damages associated with improper installation or poor site conditions.

A. The surface of the subfloor must be flat. The flatness requirement is defined as follows: the maximum difference between two high points and the intermediate low point is 1/4" in a 10' radius. Surface flatness must not vary more than 1/16" when measured with a 3' straight edge. Additionally, the subfloor must not slope more than 1" in 6'.

B. High areas can be sanded, ground down or floated over with an approved self-leveling compound. Fill excessive voids or low areas using a non-gypsum, cementitious based leveling compound. Allow the leveling compound to dry thoroughly before beginning the LVF installation. Follow the manufacturer's instructions to ensure leveling compound is appropriate for the application.

C. Subfloors must be structurally sound without deflection. Cartons should be evenly stacked no more than five cartons high on a flat surface and away from any heating or cooling ducts or direct sunlight.

D. Crawl Spaces: Concrete slab or ground must be dry. Ensure that crawl spaces have open vents year round to ensure proper air circulation and prevent moisture build-up. The ground in the crawl spaces must be completely covered using 6 mil polyethylene. Crawl space clearance between the earth and underside of joists should be no less than 18" (45.7cm), and the perimeter vent area should be equal to 1.5% of the total square footage of the crawl space or as mandated by code. Insulate and protect crawl space with a vapor barrier.



PROSERIES LUXURY VINYL FLOORING

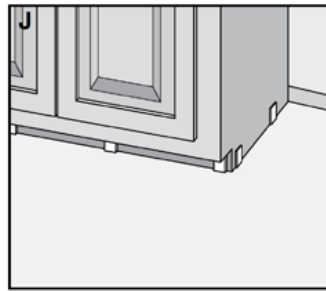
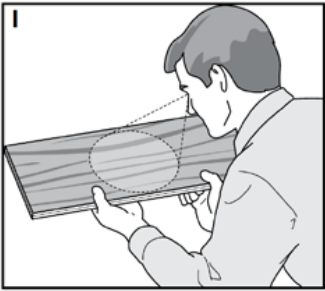
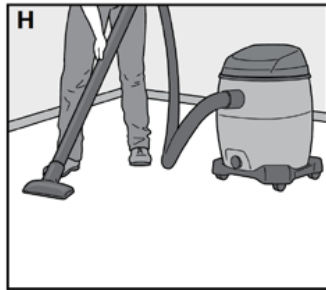
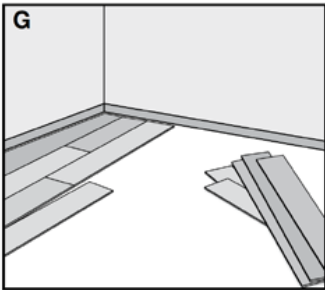
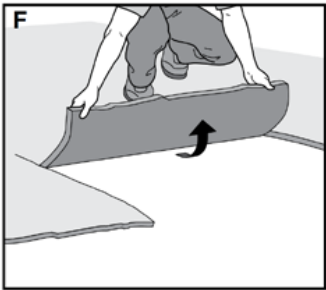
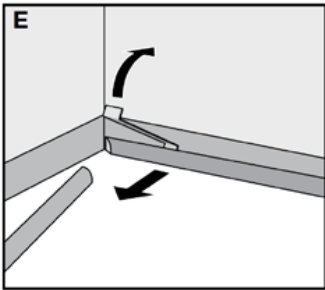
INSTALLATION & CARE GUIDE

[CLICK INSTALLATION](#)



Product Description	Grade Levels	Installation Method
Rigid Luxury Vinyl Flooring	Above, On and Below	Click Lock

- E.** Carefully remove any existing quarter round or base board molding.
- F.** Always remove carpet, carpet pad and tack strips.
- G.** Remove any existing floating or un-adhered flooring.
- H.** Be sure the surface of the subfloor is flat, clean, dry, and sound before starting.
- I.** Inspect every plank for any shipping damage when removing from the carton.
- J.** Kitchen cabinets must be installed before the floor is installed. Do not install cabinets on top of ProSeries LVF Rigid Click flooring.



APPROVED SUBFLOORS

Concrete, plywood, OSB, particleboard, chipboard, hardwood (solid, engineered, parquet), tile (ceramic, terrazzo, stone, peel and stick), non-cushion sheet vinyl, metal, VCT and DRIcore are acceptable substrates. All subfloor requirements noted below must be met prior to the installation of ProSeries LVF Rigid Click Flooring.

CONCRETE SUBFLOOR PREP

- New and existing concrete subfloors should meet the guidelines of the latest edition of ACI 302 and ASTM F 710, "Standard Practice for Preparing Concrete Floors for Receiving Resilient Flooring," available from the American Society for Testing and Materials.
- Perform moisture tests at locations around exterior doorways, near walls containing plumbing, near foundation walls and in the center of the room.
- High spots can be removed by grinding. Depressions can be filled with patching compound formulated for use in floor installation.
- Newly-laid concrete slabs must cure for at least 90 days prior to installation.
- Concrete can be either sealed or unsealed.
- Moisture levels of concrete slabs before, during and after installation must be $\leq 8\text{lbs}/1000\text{ft}^2/24\text{-hr}$ using an anhydrous calcium chloride test according to ASTM F1869, and pH must be between 5.0 and 9.0; or, if using ASTM F2170 in-situ probes, relative humidity should be less than 90%. Always measure, record, and retain your testing results.

WOOD SUBFLOORS

(Plywood, OSB, Particleboard, Chipboard, Solid Hardwood, Luan)

- Wood subfloors must be APA approved with a minimum grade of BB or CC. (For reference, APA refers to the American Plywood Association, now known as the Engineered Wood Association).
- Double-layered APA rated wood subfloors should be a minimum 1" total thickness, with at least 18" well-ventilated air space beneath.

PROSERIES LUXURY VINYL FLOORING

INSTALLATION & CARE GUIDE

[CLICK INSTALLATION](#)

Product Description	Grade Levels	Installation Method
Rigid Luxury Vinyl Flooring	Above, On and Below	Click Lock

- Perform moisture tests using a reliable moisture meter in multiple locations. Moisture readings should never exceed 14% for plywood, OSB, particleboard, chipboard or solid hardwood subfloors. If moisture readings exceed 14%, conditions must be corrected at the job site before installation.
- It is recommended that your chosen APA underlayment be designed for installation under resilient flooring and carry a written warranty.
- Always follow the underlayment manufacturer's installation instructions.
- Wood subfloors directly fastened to concrete, or sleeper construction, are not recommended.

OTHER SUBFLOOR PREP

- Adhered and sound vinyl sheet goods, vinyl tiles, linoleum and resilient (VCT) tiles usually do not need to be removed if they are fully bonded and free of any notable damage. Some older vinyl sheet goods and tile contain asbestos. Should existing flooring contain asbestos, special precautions must be taken for your safety. Contact a professional immediately for inspection and removal.
- Ceramic tiles and terrazzo usually do not need to be removed. Grout joints wider than 1/4" must be filled. LVF may be installed directly over ceramic tiles and terrazzo, provided they are fully adhered, smooth, sound and dry. These flooring materials must be smooth and flat to within 1/4" in a 10' radius and must not vary more than 1/16" when measured with a 3' straight edge.
- Do not install over more than one layer of existing vinyl.

RADIANT FLOORING HEATING PREP

- After market radiant heated floors must be approved by the manufacturer for use with resilient flooring applications.
- The subfloor temperature be between 45°F and 85°F.

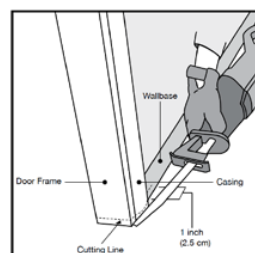
SUBFLOORS NOT APPROVED

- Carpeting/Carpet Pad
- Cushioned Vinyl Flooring
- Floating Floors
- Laminate
- Parquet Over Concrete
- Cork
- Engineered Hardwood Over Concrete
- Sleeper Substrates
- Hardwood Over Concrete
- Rubber

NOTE: Remove the floors listed above and remove old adhesive before installing LVF.

INSTALLATION PREPARATION

- ProSeries LVF Rigid Click is intended for indoor use only.
- Room temperature conditions must be controlled between 50°F and 80°F and humidity below 65% for 48 hours before, during and after installation. Product must be acclimated in this controlled environment for a minimum of 48 hours prior to installation, and stacked no more than 5 cartons high.
- A 3/8" (9mm) expansion space must be maintained around the perimeter of the room and any fixed objects such as pipes or columns.
- Use approved safety equipment to provide proper protection based on each given task.
- Door-jambs and casings must be undercut so that the plank can slide underneath. A 1/4" (6 mm) expansion space must also be included around the undercut jambs and casings. A reciprocating saw is recommended to create the necessary undercut. Never undercut metal door casings. **Cutting Tip:** To undercut the casting, lay a scrap piece of flooring next to the casting and lay the saw flat on top of the flooring so that the saw easily cuts to the height of the plank.



PROSERIES LUXURY VINYL FLOORING

INSTALLATION & CARE GUIDE

[CLICK INSTALLATION](#)

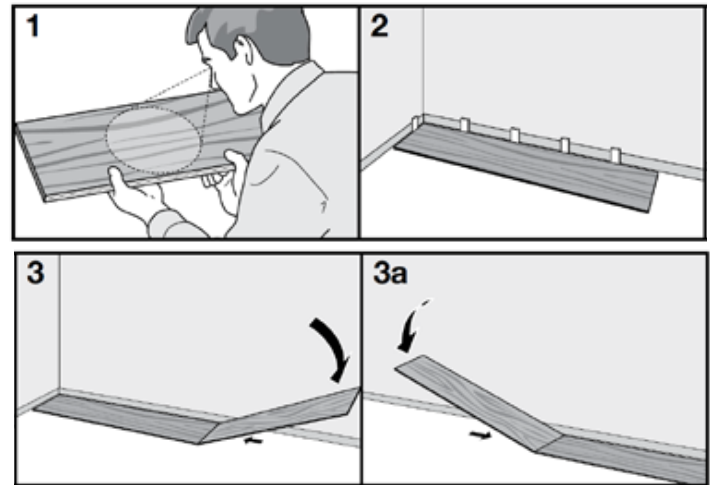
Product Description	Grade Levels	Installation Method
Rigid Luxury Vinyl Flooring	Above, On and Below	Click Lock

IMPORTANT: Always inspect each plank to ensure it is not damaged prior to installation. Check the tongue and groove to ensure both are free of debris or damage.

- It is recommended to blend flooring from multiple cartons during installation.
- Cartons should be evenly stacked no more than five cartons high on a flat surface and away from any heating or cooling ducts or direct sunlight.
- Excess flooring should be stored in a protected and climate controlled environment for possible future repairs.
- The HVAC system must be on and functional before, during and after installation.
- Power tools can be dangerous. Operate in strict accordance with manufacturer's operating instructions and safety precautions. Unsafe and improper use can cause serious injuries. Avoid inhalation and exposure to airborne particles by wearing personal protective equipment, including: NIOSH or OSHA approved dust masks, safety goggles and work gloves.

CLICK LOCK INSTALLATION

1. Inspect each plank. Blend planks from several cartons at the same time to ensure good color and shade mixture throughout the installation.
2. The first plank of the first row should be a full length plank. It is recommended that installation begin in a corner of the room. Between the first row of flooring and the wall, insert spacers so that a 3/8" (9mm) gap is maintained. The entire installation requires a 3/8" expansion space.
3. When installing the first row, insert the short edge of one plank into the short edge of another plank at slight angle and rotate downward. Continue to complete the starter row, maintaining a straight edge for the following row.
4. Use a tapping block and soft faced hammer to close any gaps between the planks.



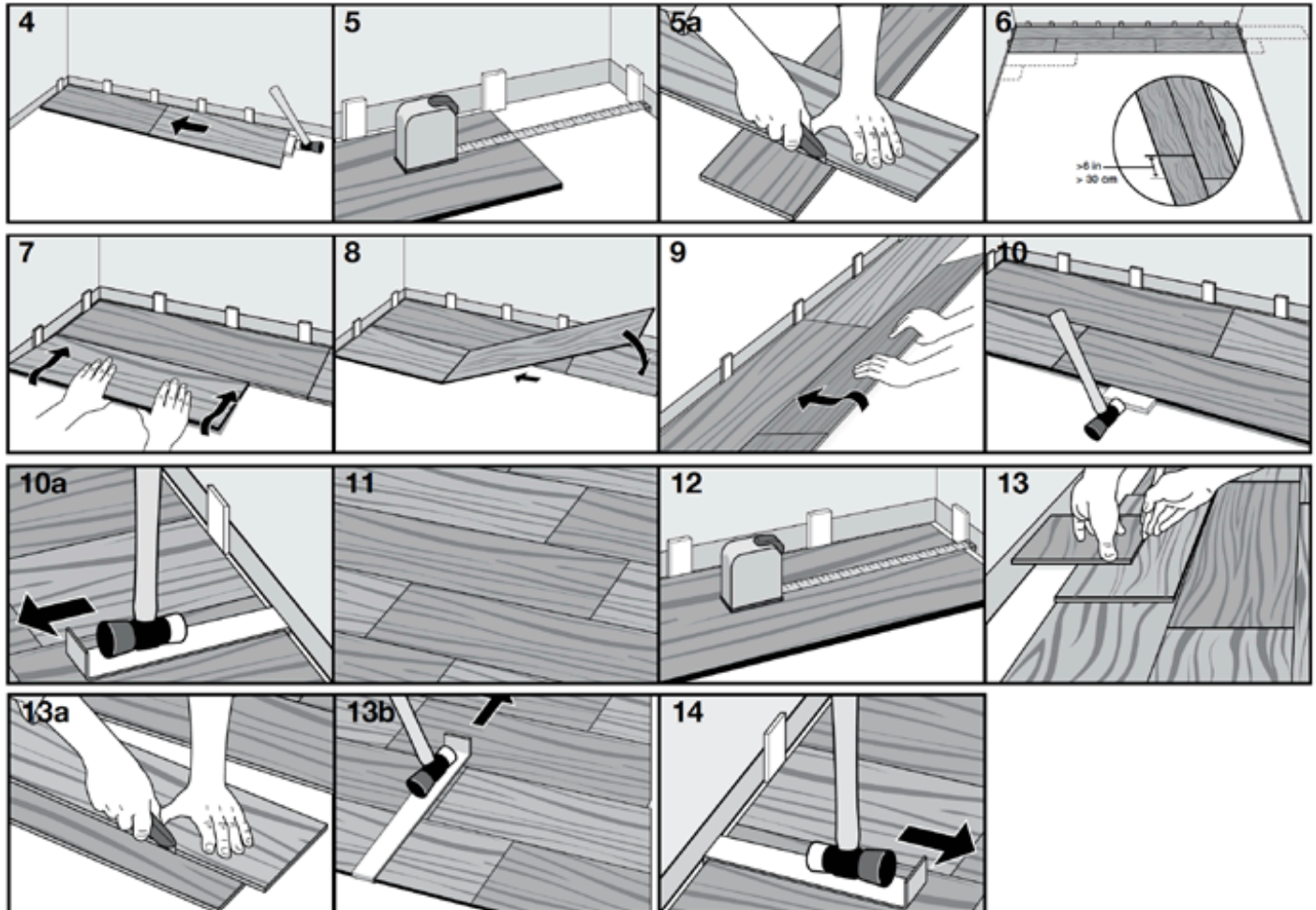
5. Once you reach the end of the first row, measure and cut the final plank so that it completes the row while also leaving the necessary 3/8" expansion gap. Last planks of rows must be at least 8" long. Note: Use a spare plank to create a straight edge at the cut line. Use a utility knife to score the top of the pattern and snap the panel. It will be necessary to cut the foam underlayment after snapping the panel.
6. Start the second row of flooring by using the trimmed planks from the previous row. First pieces must be at least 8" long. End joints should be staggered a minimum of 6" from one row to the next.
7. At a slight angle, insert the long edge tongue of the first plank in row 2 into the long edge groove of the plank in row 1 until the plank edges meet, and then rotate down until the joints lock.
8. When joining the next plank in the second row, join the short side edges first. There will be a gap on the long side joints when the plank is rotated down.
9. Raise the outside long edge of the plank upward approximately 1". Maintain this angle as you push the plank in until the long edge of the plank meets the long edge of the first row. Rotate downward on the plank until the joint locks.

PROSERIES LUXURY VINYL FLOORING

INSTALLATION & CARE GUIDE

[CLICK INSTALLATION](#)


Product Description	Grade Levels	Installation Method
Rigid Luxury Vinyl Flooring	Above, On and Below	Click Lock



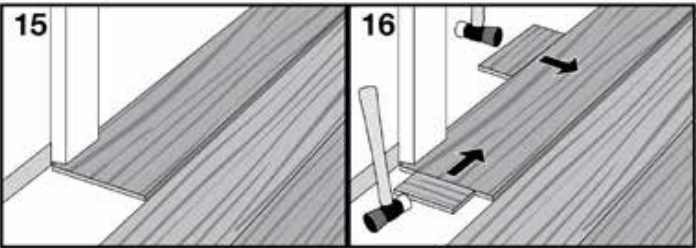
10. After tapping the long side joint closed, close the short edge joints using a tapping block or pull bar.
11. Repeat these steps to complete the installation.
12. After each row is complete, ensure there will be a 3/8" (9mm) gap to the wall, after the joints are closed, for expansion.

13. For the last row, align the plank to be used on top of the 2nd to last row. Using a full width plank as a spacer, trace the wall contour. Use a full plank as a straight edge to cut the plank. Insert the long edge tongue in to the long edge groove and use a pull bar and hammer to close the gap.
14. After tapping the long side joint closed, close the short edge joints using a tapping block or pull bar.

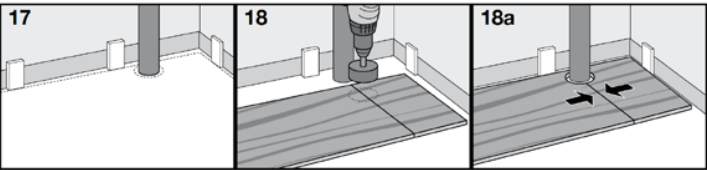


Product Description	Grade Levels	Installation Method
Rigid Luxury Vinyl Flooring	Above, On and Below	Click Lock

15. When the new flooring meets a threshold or a doorway, we recommend undercutting the door jamb. To secure the right cut, turn a plank upside down and place it on the floor up to the door frame. Then place a reciprocating saw flat against the plank and simply cut through the frame. Remove the cut-out piece and vacuum away debris. Slide plank under pre-cut door frame. Door frame should be cut so that a 3/8" (9mm) gap is located from the edge of the plank under the casing to the wall.
16. Tap the long side joint closed first, then tap the end joint closed.



17. In place of a resilient tile cutter, a miter or circular saw with the blade cutting into the design of the planks can be used to cut the rigid luxury vinyl floors. A utility knife can also be used, scoring the top of the pattern and snapping the plank. It will be necessary to cut the foam underlayment after snapping the plank.
- NOTE:** Maintain a 3/8" (9mm) expansion space around all walls and vertical objects. Quarter round or baseboard molding will cover this expansion space.

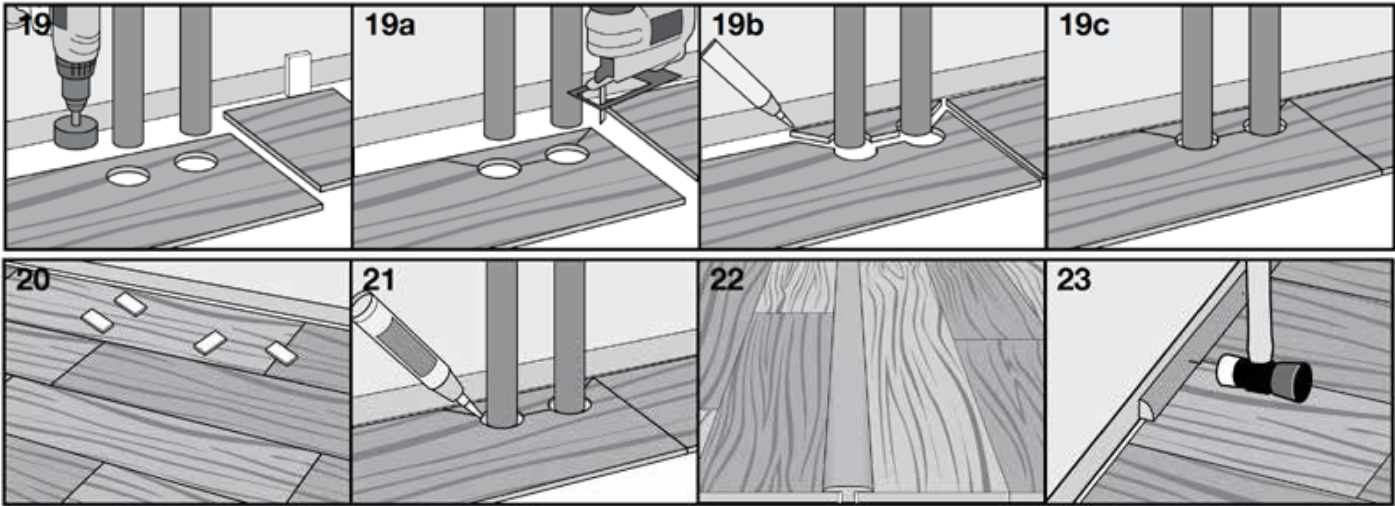


INSTALLING AROUND FIXED OBJECTS

18. Allow 3/8" (9mm) expansion space around pipes or other fixed objects.
19. In rows where there is a pipe, make sure the pipe falls exactly in line with the short side of two planks. Select a drill bit with the same diameter as the pipe plus 1/2" (13 mm). Click the planks together on the short side and drill a hole centered on the joint between the two planks. Then install the planks.
20. For a double pipe, drill a hole equivalent to the diameter of the pipe plus 1/2" (13 mm) at each of the marked points. If located on the long side of the plank, make a 45° cut from each hole to the edge of the plank. Then, using an appropriate glue along the cut edges of the piece you cut out, glue the piece in place. Be sure no glue comes between the cut-out piece and the subfloor.
21. Remove all spacers.
22. Fill any expansion spaces around potentially wet areas, such as refrigerators, tubs, etc., with premium waterproof 100% silicone caulk.
23. When installing LVF in any room or area larger than 100 lineal feet (30.5 m) in any direction, the use of a coordinating T-Molding/Reducer transition is required to separate the floor into sections no larger than 100' x 100' (30.5 m x 30.5 m) per section.
24. Install moldings to cover the expansion gap. When installing moldings, never allow nails or screws to enter the LVF or the expansion zone around the flooring perimeter. All moldings and transition strips need to provide a 3/8" (9mm) expansion space as well.

NOTE: Maintain the 3/8" expansion gap around cabinets, pipes, toilet flanges and any obstacles in the floor (it is not recommended to trim around a toilet, however leave the expansion space around the toilet flange).

Product Description	Grade Levels	Installation Method
Rigid Luxury Vinyl Flooring	Above, On and Below	Click Lock



CARING & CLEANING

PREVENTATIVE MAINTENANCE

- Prevent indentations and scratches by using non-staining floor protectors on the legs of chairs, appliances and all heavy furniture. Floor protectors should be at least 1" in diameter. Periodically clean protectors to remove grit that may become embedded and cause scratching.
- Replace plastic or metal chair casters with rubber, and keep casters clean.
- Place walk-off mats at entrances. Mats should have a non-rubberized backing and be labeled as nonstaining.
- We recommend the use of a hard surface (non-studded), non-rubber chair mat to protect your floor from office chairs with casters. Light, rolling furniture should be outfitted with broad-surface, non-staining casters that have been engineered for hard surface floors. Such casters should be a minimum of 1" (2.5 cm) wide and at least 2" (5.1 cm) in diameter.
- Avoid exposure to direct sunlight for prolonged periods of time, as this can cause discoloration. Use of window coverings is recommended.
- Keep pets' nails trimmed.
- Remove shoes with cleats, spikes, or pointed high heels before walking on the floor.

- Protect your floors against burns. Burns from cigarettes, matches or other extremely hot items can cause permanent damage to your luxury vinyl flooring.

CLEANING

- Sweep the floor regularly with a soft bristle broom to remove loose dirt.
- Wash the floor with non-abrasive, neutral PH floor cleaner approved for vinyl floors.
- For every day cleaning, a mop moistened with warm water will suffice.
- Spills should be cleaned up immediately.

CLEANING AGENTS TO AVOID

- Detergent based cleaners
- Abrasive or mop and shine products
- Ammonia or bleaches
- Vacuum cleaner with a rotating beater bar engaged
- Floor wax

NOTE: Always read the cautionary information on all cleaners prior to use.

IMPORTANT: Never push, pull or drag furniture, appliances or other items across the floor. Always lift and carry furniture or heavy items.

PROSERIES™ LVF GLUE DOWN INSTALLATION INSTRUCTIONS



RESILIENT / PROSERIES LVF

GLUE DOWN LVF INSTALLATION INSTRUCTIONS

Daltile | Dal-Tile Corporation
7834 C.F. Hawn Freeway
Dallas, TX 75217

TECHNICAL SERVICES
1.800.933.TILE



PROSERIES™ LVF GLUE DOWN INSTALLATION INSTRUCTIONS



Daltile ProSeries resilient/LVF (luxury vinyl flooring) is recommended for a variety of residential and commercial applications, including educational, institutional, healthcare, retail, office, hospitality and multifamily environments and may be installed over most properly prepared substrates, making it suitable for installation on all grade levels where moisture conditions do not exist.

SUBSTRATE & TESTING REQUIREMENTS

All substrates to receive resilient flooring shall be dry, clean, smooth, and structurally sound. They shall be free of dust, solvent, paint, wax, oil, grease, residual adhesive, adhesive removers, curing, sealing, hardening, or parting compounds, alkaline salts, excessive carbonation or laitance, mold, mildew, and other foreign materials that might prevent adhesive bond. All substrates to receive moisture sensitive floor covering must be tested for moisture.

ASBESTOS WARNING! DO NOT MECHANICALLY CHIP OR PULVERIZE EXISTING RESILIENT FLOORING, BACKING, LINING FELT, ASPHALTIC "CUTBACK" ADHESIVES OR OTHER ADHESIVES.

Previously installed resilient floor covering products and the asphaltic or cutback adhesives used to install them may contain either asbestos fibers and/or crystalline silica. Avoid creating dust. Inhalation of asbestos or crystalline dust is a cancer and respiratory tract hazard. Smoking by individuals exposed to asbestos fibers greatly increases the risk of serious bodily harm. Unless positively certain that the previously installed product is a non-asbestos containing material, you must presume it contains asbestos. Regulations may require that the material be tested to determine asbestos content and may govern the removal and disposal of material. See current edition of the Resilient Floor Covering Institute (RFCI) publication "Recommended Work Practices for Removal of Resilient Floor Coverings" for detailed information and instructions on removing all resilient covering structures.

FLEXIBLE GLUE DOWN LVF INSTALLATION TOOLS REQUIRED FOR INSTALLATION

- Tape Measure
- Square Ruler
- Utility Knife
- Chalk Line
- Rubber Mallet
- Standard PPE
- Hand Roller
- 100 lb Roller
- U Notch Trowel 1/16"x1/32"x1/32" Dry Back
- U Notch Trowel 1/16"x 1/16"x 1/16 Attached Pad

STORAGE & HANDLING

Acclimate the flooring for a minimum of 48 hours before installation in the area where it will be installed. Conditions between 65°F and 85°F (18°C and 29°C) are required before, during and after installation. Cartons should be evenly stacked no more than five high on a flat surface and away from any heating/cooling ducts or direct sunlight.

FLOOR PREPARATION

Floor must be clean, smooth, flat and dry. Remove all foreign substances, such as wax, grease, dirt, construction marks and contaminants, and any substance or chemical that would interfere with a good bond. Avoid using sweeping compounds. Do not install over substrates that have been chemically cleaned. Wood subfloor or underlayment must be flat, not to exceed variation of 1/4 inch in 10 feet (1/2 cm in 3 m). The flatness of concrete subfloors must meet or exceed the requirements of ACI FF25. Fill all holes and cracks with a latex fortified portland cement based patching compound. Daltile recommends priming extremely porous floors with an acrylic latex primer to prevent over absorption of adhesives, for dust containment, and to ensure a better bond of the adhesive to the subfloor or underlayment.

Suitability: Regardless of the type of concrete or cement-like material used as a base for Daltile LVF flexible glue down products, the responsibility for its use or suitability rests with that product's

PROSERIES™
LUXURY VINYL FLOORING



PROSERIES™ LVF GLUE DOWN INSTALLATION INSTRUCTIONS



manufacturer or specifier and not with Daltile. Moisture Testing: It is the responsibility of the flooring contractor and the installer to test all concrete substrates, both old and new, for moisture transmission using the Calcium Chloride Moisture Test according to ASTM F1869. Moisture vapor transmission should not exceed the recommended levels of 8 lbs. or less per 1,000 sq. ft. in 24 hours. This test should be performed and documented prior to installation. Also test for relative humidity in concrete floor slabs using in-situ probes, which should be no more than 90% RH per ASTM F2170 before, during and after installation. These acceptable moisture readings are only applicable when using Daltile's ProSeries Universal Pressure-Sensitive Adhesive.

ACCEPTABLE SUBSTRATES

CONCRETE SUBSTRATES

New and existing concrete subfloors should meet the guidelines of the latest edition of ACI 302 and ASTM F 710, "Standard Practice for Preparing Concrete Floors to Receive Resilient Flooring" available from the American Society for Testing and Materials.

- Never use liquid adhesive remover or solvent cleaners for removing old adhesive residue or other substances on the substrate; their use will cause failure.
- On or below-grade slabs must have an effective vapor retarder directly under the slab.
- Wet curing 7 days is the preferred method for curing new concrete. • Curing compounds (DO NOT USE). If present they can interfere with the bond of the adhesive to the concrete.
- Remove curing compounds 28 days after placement, so concrete can begin drying.
- Concrete floors shall be flat and smooth within the equivalent of 1/32" in 12" and 3/16" in 10 feet.
- F-Number System: Overall values of FF 36/ FL 20 may be appropriate for resilient floor coverings.

- Glossy or waxed floors may require a higher value FF 75/ FL 50 to prevent telegraphing issues. Relative Humidity (RH) – Tests must be performed per the latest edition of ASTM F 2170 - IRH (Internal Relative Humidity Test). Three tests should be conducted for areas up to 1000 SF. One additional test should be added for each additional 1000 SF. pH – Concrete floors must be tested per the latest edition of ASTM F 710.

- pH reading must not exceed 11.0.

- Readings below 7.0 and in excess of 11.0 affect resilient flooring and adhesives.

- Rinsing the surface with clear water is the best way to lower alkalinity "DAMP MOP".

LIGHTWEIGHT CONCRETE

All recommendations and guarantees as to the suitability and performance of lightweight concrete under resilient flooring are the responsibility of the lightweight concrete manufacturer. The installer of the lightweight product may be required to be authorized or certified by the manufacturer. Correct onsite mixing ratios and properly functioning pumping equipment are critical. To ensure proper mixture, slump testing is recommended.

- Lightweight aggregate concretes having densities greater than 90 lbs. per cubic foot may be acceptable under resilient flooring.

- Concrete slabs with heavy static and/or dynamic loads should be designed with higher strengths and densities to accommodate such loads.

- **Relative Humidity (RH)** – Tests must be performed per the latest edition of ASTM F 2170 or manufacturer's recommended moisture test procedures. Three internal relative humidity tests should be conducted for areas up to 1000 SF. One additional test should be added for each additional 1000 SF.

PROSERIES™
LUXURY VINYL FLOORING



PROSERIES™ LVF GLUE DOWN INSTALLATION INSTRUCTIONS



GYPCRETE .

Prior to floor-covering installation, a moisture test of underlayment is highly recommended. When testing the underlayment for dryness, use ASTM F2659. The moisture content should not exceed 5%. If the Gyp-Crete Basic underlayment pour is greater than 2", test using ASTM F2170. That RH should not exceed 80%. Do not install floor goods until those limitations are met. If the flooring manufacturer specifies more stringent moisture limitations, they must be followed.

WOOD SUBSTRATES

- A moisture test is required using a pin-type moisture meter. The moisture content must not exceed 15%.
- Wood subfloors must be structurally sound and in compliance with local building codes.
- Double-layered APA rated plywood subfloors should be a minimum 1" total thickness, with at least 18" well-ventilated air space beneath. Insulate and protect crawl spaces with a vapor barrier.
- It is recommended that your chosen APA underlayment grade panels be designed for installation under resilient flooring and carry a written warranty covering replacement of the entire flooring system. Any failures in the performance of the underlayment panel rests with the panel manufacturer and not with Daltile.
- Underlayment panels can only correct minor deficiencies in the subfloor while providing a smooth, sound surface on which to adhere the resilient flooring.
- Always follow the underlayment manufacturer's installation instructions.
- Wood subfloors directly fastened to concrete, or sleeper construction, are not recommended.
- APA rated Sturdi-I-Floor panels are designed as combination subfloor/underlayment, but exposure

to construction conditions including weather may necessitate installation of a 1/4" underlayment panel prior to resilient flooring installation.

- Daltile resilient flooring is not recommended directly over fire-retardant treated plywood or preservative treated plywood. The materials used to treat the plywood may cause problems with adhesive bonding. An additional layer of APA rated 1/4" thick underlayment must be installed.

RESILIENT FLOOR COVERING

- Must be single layered, non-cushion backed, fully adhered, and smooth.
- Show no signs of moisture or alkalinity.
- Wax, polish, grease and grime must be removed.
- Cuts, cracks, gouges, dents and other irregularities in the existing floor covering must be repaired or replaced.

Note: The responsibility of determining if the existing flooring is suitable to be installed over rests solely with installer/flooring contractor on site. If there is any doubt as to suitability, the existing flooring should be removed or an acceptable underlayment installed over it. Installations over existing resilient flooring may be more susceptible to indentation.

POURED FLOORS (EPOXY, POLYMERIC, SEAMLESS)

- Must be totally cured and well bonded to the concrete.
- Must be free of any residual solvents and petroleum residue.
- Wax, polish, grease and grime must be removed.
- Cuts, cracks, gouges, dents and other irregularities in the existing floor covering must be repaired or replaced.

PROSERIES™
LUXURY VINYL FLOORING



PROSERIES™ LVF GLUE DOWN INSTALLATION INSTRUCTIONS



- Texture must be smooth.
- Show no signs of moisture or alkalinity.

STRIP – PLANK WOOD FLOORING

Due to expansion and contraction of individual boards during seasonal changes, DalTile recommends 1/4" or thicker APA rated underlayment panels be installed over subfloors if product will be glued down.

OLD ADHESIVE RESIDUE

If the adhesive residue is asphalt-based (cut-back) or any other type of adhesive is present, it must be dealt with in one of two ways:

1. It may be mechanically removed using methods such as bead blasting or scarifying.
2. A Portland-based self-leveling underlayment may be applied over it. **Check with the underlayment manufacturer for suitability, application instructions, and warranties.**

Note: **NEVER** use solvents or citrus adhesive removers to remove old adhesive residue. Solvent residue left in and on the subfloor will affect the bond between the new adhesive and the new floor covering.

VCT

Well bonded; on and above grade; in absence of waxes or sealers **CERAMIC** Well bonded and properly prepared **TERRAZZO** Well bonded and properly prepared **SELF-LEVELING AND PATCHING COMPOUNDS**

RESILIENT One layer; well bonded; non-cushioned

UNACCEPTABLE SURFACES

- Cushion backed vinyl
- Laminate
- Interflex and any perimeter bonded products
- Carpet
- Cork
- Any floating floor system

*DalTile will not warrant or accept responsibility of any kind for flooring failures related to the use of unacceptable substrates and surfaces.

JOB SITE CONDITIONS

It is recommended that resilient floor covering installation shall not begin until all other trades are completed.

- Areas to receive flooring shall be clean, fully enclosed, with the permanent HVAC set at a uniform temperature range of 65°F to 85° F and maintained following the installation.
- Areas to receive flooring should be adequately lighted during all phases of the installation process.
- Working and open times vary based on job conditions, substrate, temperature, and humidity.

TEMPERATURE - AMBIENT

- Controlled environments are critical for testing and installation. Fully operational HVAC systems are the best way to ensure temperature and humidity control.

Do not install resilient flooring products until the work area can be temperature controlled. Minimum installation temperature is 65° F with a maximum installation temperature of 85° F, and the humidity below 65% for 48 hours or prior to, during, and after pre-installation testing. **DO NOT INSTALL FLOORING IF MOISTURE TEST RESULTS EXCEED RECOMMENDED LIMITS.**

PROSERIES™
LUXURY VINYL FLOORING



PROSERIES™ LVF GLUE DOWN INSTALLATION INSTRUCTIONS



Building Owners/Caretakers should become aware of the flooring manufacturer's guidelines for climate control settings (temperature and humidity). These conditions must be monitored and kept constant to ensure the overall performance and long-term success of the installation.

TEMPERATURE – RADIANT HEAT

- Radiant heated substrates must never exceed 85° F surface temperature.

Several days prior to installing resilient products over newly constructed radiant heated systems, make sure the radiant system has been on and operating at maximum temperature to reduce residual moisture within the concrete.

- Three days prior to installation, lower the temperature to 65° F. 24 hours after installation gradually increase the temperature in increments of 5° F.
- After continuous operation of the radiant system, ensure the surface of the floor does not exceed 85° F.

MATERIAL AND HANDLING

- All material should be from the same run/lot number, which is found on each carton label. If material from more than one run is to be used, the job should be laid out so that different run numbers are not installed side by side.
- Flooring material and adhesive must be acclimated to the installation area for a minimum of 48 hours prior to installation.
- Store cartons of tile or plank products flat and squarely on top of one another. Preferably, locate material in the "center" of the installation area (i.e. away from vents, direct sunlight, etc.)
- Material should always be visually inspected prior to installation. Any material with visible defects should not be installed. Flooring installed with visible defects will not be considered a legitimate claim.

DALTILE PROSERIES ADHESIVE

- Use of an approved adhesive such as DalTile ProSeries Adhesive is required for warranty to apply.

UNIVERSAL PRESSURE-SENSITIVE ADHESIVE PROSERIES

- Universal Pressure-Sensitive Adhesive is a very aggressive, pressure-sensitive adhesive (acrylic latex) that is designed for the installation of a wide variety of flooring types. It has been specifically formulated to provide extended working time, develop strength quickly and perform well under rolling loads with good moisture resistance. ProSeries Universal Pressure-Sensitive Adhesive is approved for use with luxury vinyl tile in apartments, condominiums, homes and commercial areas such as airports, malls, office buildings, restaurants, hospitals, schools, universities and government buildings.

Testing Requirements: Slabs up to 95% RH and 11 pH or less.

ADHESIVE APPLICATION

Note: Please follow DalTile ProSeries Adhesive guidelines for complete application instructions found at daltil.com/LVF. Read all installation instructions thoroughly before installation. Refer to technical and safety data sheets for complete information regarding uses, application, limitations and safety.

1. Tools & Materials Needed: 100-lb. 3-section roller (roll both directions), chalk line, carpenter square, utility knife, tape measure, in-situ RH moisture meter, pH testing kit.
2. For full spread application, use ProSeries Universal Adhesives with a 1/16" x 1/32" x 1/32" U-Notch trowel for dry back LVP and 1/16" x 1/16" x 1/16" U-notch for Attached Pad LVP. Follow the directions on the adhesive label.

PROSERIES™
LUXURY VINYL FLOORING



PROSERIES™ LVP GLUE DOWN INSTALLATION INSTRUCTIONS



3. Spread the adhesive evenly over the subfloor, keeping the trowel at a 45-degree angle to the subfloor.
4. On nonporous substrates, allow the adhesive to remain open until trowel valleys are clear. On porous substrates, flooring can be installed into wet-tacky adhesive. Protect the open adhesive from dust and debris, which will inhibit proper bond and decrease tack.
5. Install all planks/tiles with directional arrows pointing in the same direction. Install the field area first.
6. Once the flooring is installed, immediately roll it using a 100-lb. (45,4-kg) roller.
7. Clean adhesive smudges from the flooring surface and tools with water while the adhesive is fresh/wet. Use mineral spirits when the adhesive is dry.

WARNING: For installation over old resilient floor coverings or when considering removing existing resilient floors, please be advised that these products may possibly contain asbestos fibers or crystalline silica. Please follow all recommended Resilient Floor Covering Institute (RFCI) work practices at www.rfci.com.

Cutting: Tiles and planks may be cut with a small tile cutter or scored with a utility knife and snapped.

GLUE DOWN INSTALLATION

When using planks/tiles from two or more cartons, check to be sure all pattern and lot numbers are the same to ensure proper color match. On larger installations, open several cartons and mix them as they are installed to help blend any slight shade differences from one carton to the next.

Products with directional arrows on the back should be installed with the arrows all pointing in the same direction unless you are installing custom layouts.

Before installing the material, plan the layout so plank/tile joints fall at least 6 inches (15 cm) away from subfloor and underlayment joints. Find the center point in the room. Divide the room into equal quadrants by marking two perpendicular lines on the subfloor intersecting at the center point. Depending on your layout, you may also start your row along a wall. Since walls are not always straight, snap a chalk line. Do not install over expansion joints.

Important: When installing flooring with Attached Pad, no additional underlayment should be used.

Approved additional approved underpayments may be used with dry back LVP when necessary. All installation must follow underlayment installation instructions and limitations.

Daltile continuously makes technological advancements that improve product performance or installation techniques and methods. All instructions and recommendations are based on the most recent information available and should be followed for an ideal installation. Contact Daltile Technical Services at 800-933-TILE with questions about product installation or visit our website at daltile.com to ensure you have the most up to date version of our installation instructions.

IMMEDIATELY AFTER INSTALLATION

Restrict to light traffic for the first 24 hours. Maintain climate settings (temperature and humidity) within installed area; do not expose to severe increases or decreases in climate. Install the base moldings. Seal all areas that may be exposed to surface spills (i.e. tubs, toilets, and showers) with silicone caulking.

TRAFFIC

Restrict foot traffic for 12 hours after installation.

- Restrict heavy traffic, rolling loads, or furniture placement for 24 hours after installation. Additional time may be necessary if the installation is over a non-porous substrate.

PROSERIES™
LUXURY VINYL FLOORING



PROSERIES™ LVF GLUE DOWN INSTALLATION INSTRUCTIONS



- Return appliances and furniture to the room by rolling or sliding them over strips of hardboard.
- Allow at least five days following the installation before conducting wet cleaning procedures or initial maintenance.

CARE AND MAINTENANCE

Your Daltile LVF flooring will provide years of carefree use. You will find that it is not only beautiful, but durable. It is also much easier to maintain than most other flooring products, thanks to its tough protective finish and moisture resistance. It only takes a few simple care and maintenance steps to keep your Daltile floor looking beautiful for years to come.

PREVENTATIVE MAINTENANCE

Prevent indentations and scratches with the use of non-staining floor protectors or felt pads on the legs of chairs, appliances and all heavy furniture. Floor protectors should be at least one inch in diameter.

- Do not flood floor or subject to standing water.
- Protect your floor from tracked-in dirt by using mats at all outside entrances. Mats should have a non-rubberized backing and be marked as non-staining.
- Avoid tracking in tar or asphalt from driveways.
- Avoid high heeled shoes on your floor, as they can cause permanent indentations.
- Protect your floors against burns. Burns from cigarettes, matches or other extremely hot items can cause permanent damage.
- Avoid exposure to direct sunlight for prolonged periods, as this can cause discoloration.

- Areas to receive flooring shall be fully enclosed, with the permanent HVAC set at a uniform temperature range of 65°F to 85° F and maintained following the installation.

CLEANING & MAINTENANCE

- Sweep the floor regularly with a soft bristle broom to remove loose dirt.
- Wash the floor with non-abrasive, neutral pH floor cleaner. • For every day maintenance, a mop moistened with warm water will suffice.
- Spills should be cleaned up immediately.

DO NOT USE THE FOLLOWING ON YOUR DALTILE LVF FLOOR:

- Soap based detergents
- Abrasive or mop-and-shine products
- Floor wax
- Ammonia or bleaches; for spot treatment or stain removal, use a diluted 10:1 solution of water to liquid bleach
- Vacuum cleaner with a rotating beater bar

Always read the cautionary information on all cleaners prior to use.

IMPORTANT: Never push, pull or drag furniture, appliances or other items across the floor. Always place hardboards over flooring or lift and carry furniture and other heavy items.

TREATING STAINS, SPILLS & SCUFFS

Follow the remedies in order. Unless instructed otherwise, use a clean, white cloth or towel with products recommended for Daltile LVF flooring. Always rinse the affected area with clean water after

PROSERIES™ LVF GLUE DOWN INSTALLATION INSTRUCTIONS



treatment.

STAIN OR SPILLS OF THIS CATEGORY: Acids, alkalis, blood, ketchup, mustard, food, fruit, fruit juices, candy, cleaners, strong soaps, dye, dye markings, urine and feces, grass, iodine, mercurochrome and rust

Remedy

- If substance is dry, gently peel it from the floor. Avoid sharp instruments that could scratch floor.
- Scrub area with non-abrasive cleaner.
- Rub lightly with odorless mineral spirits or paint thinner. NOTE: Do not use acetone or nail polish remover.

SUBSTANCES THAT WON'T WIPE UP:

Adhesives, chewing gum, oil, grease, candle wax and tar Remedy:

- First, remove as much solid material as possible.
- Carefully remove excess with a spoon or fingernail. Avoid sharp instruments that could scratch floor.
- Scrub area with non-abrasive cleaner.
- Rub lightly with odorless mineral spirits, isopropyl alcohol or lighter fluid.

SCUFFS AND SMUDGES:

Rubber heel marks, shoe polish Remedy:

- Rub the scuff with fingertip. The friction will remove rubber.
- Scrub area with non-abrasive cleaner.
- Rub lightly with isopropyl alcohol or lighter fluid.

CAUTION: Isopropyl alcohol, lighter fluid, odorless mineral spirits and paint thinner are flammable

solvents. Carefully read and follow cautionary information on respective labels. Keep traffic off treated area for 30 minutes.

FILING A CLAIM

If you find a defect or other matter covered by any of the limited warranties described previously, promptly notify the retailer who sold you the floor covering material. The retailer will review, and if necessary file a claim with Daltile, and help answer any questions you may have.

After a warranty claim is properly filed, Daltile's service coordinator will designate a representative to evaluate the warranty claim. This warranty is conditioned upon your reasonable cooperation with Daltile and its service coordinator and representative in the evaluation of your warranty claim and the implementation of any remedy.

PROSERIES™
LUXURY VINYL FLOORING

