

6.5mm | 20 mil
ASHER BEND™
RIGID CLICK

PROSERIES™
LUXURY VINYL FLOORING
daltile



SuperGuardX™
REINFORCED SHIELD

6.5mm | 20 mil

ASHER BEND™

RIGID CLICK

With an earthy color palette and a natural hardwood visual, Asher Bend™ introduces comfort into any room. Arrange this luxury vinyl flooring in a distinctive herringbone pattern for a chic composition. Asher Bend features both a 5 x 24 plank & an extra-long 9 x 71 plank for lavish looks. A Uniclic® locking system ensures that installation is seamless and quick. Prioritize coziness and security as core features of your space.

REFINED DESIGN

- 5" x 24" Herringbone plank & 9" x 71" wood look planks
- Earthy color palette
- Multi-layer SPC rigid core with Uniclic® Locking System
- Embossed in Register surface for realistic look and feel
- Microbevel for realistic wood look and feel
- Built-in solid IXPE underlayment pad that resists mold and mildew
- 6.5 mm Thickness

PREMIUM PERFORMANCE

- SuperGuardX™ Technology
- 20 mil wear layer for heavy foot traffic
- 100% Waterproof
- 100% Virgin Vinyl



Cover photo features Asher Bend™ Villa 9 x 71 plank on the floor.
Above photo features Asher Bend™ Manor 5 x 24 plank in a herringbone pattern on the floor.

6.5mm | 20 mil
ASHER BEND™
RIGID CLICK

SIZES:



9 x 71 Plank



5 x 24 Plank

9 x 71 WOOD LOOK PLANKS



PICKET FENCE AB21



VILLA AB22



HEARTH AB23



MANOR AB24



LODGE AB25

5 x 24 HERRINGBONE WOOD LOOK PLANKS



PICKET FENCE AB21



VILLA AB22



HEARTH AB23



MANOR AB24



LODGE AB25

6.5mm | 20 mil

ASHER BEND™

RIGID CLICK



NOISE REDUCING



EASY TO CLEAN



100% WATERPROOF



100% VIRGIN VINYL

SPECIFICATIONS

Product Type:	SPC Rigid Core LVF
Installation:	Rigid Click
Thickness:	6.5 mm
Wear Layer:	20 mil (0.508 mm)
Finish:	SuperGuard X™ Technology
Size:	9" W x 71" L Plank 5" W x 24" L Herringbone Plank
Underlayment:	Pad Attached; 1.0 mm IXPE
Bevel:	Micro Bevel
Embossing:	Embossed in Register EIR
Plank Variation:	8 Unique Planks
Sq. Ft./Carton:	18.6/26.51
Pieces/Carton:	24/6
Weight:	1.32/7.61 lbs per pc 31.27/45.64 lbs per carton
Warranty:	Limited Lifetime Residential Warranty Limited 15 Year Multifamily Warranty Limited 15 Year Light Commercial Warranty Limited 15 Year Commercial Warranty
Installation Advisory:	Asher Bend™ click LVF uses Uniclic® Locking System; no adhesive required. See daltille.com/LVF for more recommended installation information.
Stocking Platform:	6.5 mm, 20 mil
Special Order Platform:	Additional Platforms available on special order. Minimum quantities apply. Contact your Daltille representative for additional information.
Transitions:	Slim Trim 4-in-1 Transition, Extra Tall Stair Nose, Vinyl Stair Cap, and Full Round Stair Tread
*Special Order Transitions:	Round Stair Nose, Quarter Round, and Slim Cap

PERFORMANCE & CHARACTERISTICS

Construction:	Commercial Grade Luxury Vinyl Flooring; 100% Virgin Vinyl
Classification:	ASTM F1700 - Class III, Type B - Embossed
Squareness:	ASTM F2055 - Passes - $\pm 0.010"$ max
Size and Tolerance:	ASTM F2055 - Passes - Plank Length ≤ 48 in. ± 0.080 in. (2 mm)
Thickness:	ASTM F386 - Passes - ± 0.008 inches
Dimensional Stability:	ASTM F2199 - Passes - Residential & Commercial - Res 0.25% / (0.080 in.) avg. max & Comm. 0.20% / (0.080 in.) avg. max
Static Load Limit:	ASTM F970 - Passes - Average ≤ 0.005 in.
Residual Indentation:	ASTM F1914 - Passes - $\leq 8\%$
Resistance To Chemicals:	ASTM F925 - Passes - No more than a slight change
Resistance To Light:	ASTM F1515 - Passes - $\Delta E < 8.0$
Resistance To Heat:	ASTM F1514 - Passes - Average $\Delta E < 8.0$

NOTES

See daltille.com/LVF for recommended installation and care guidelines.



7834 C.F. Hawn Freeway,
Dallas, Texas 75217 | 1.800.933.TILE

To view the complete collection of
Daltille® products and information,
visit our website at daltille.com/LVF

PROSERIES™
LUXURY VINYL FLOORING



©2024 Dal-Tile, LLC (10/24)

COORDINATING TRIM

Seven trims and moldings that are designed to coordinate with each of our existing colors within the collection.

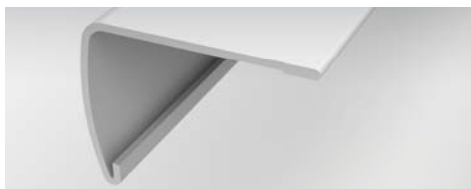
STOCKING ITEMS:

- EXTSN:** Extra Tall Stair Nose (2" x 94")
- VSCAP:** Flush-Mount Vinyl Stair Cap (2-3/4" x 44")
(Length may vary by series.)
- SLMT:** Slim Trim 4-in-1 Transition (2" x 94") , Four unique trims and moldings in one single SKU (T-Molding, Hard Surface Reducer, Carpet Transition, End Cap)
- RNDSTRD:** Full Round Stair Tread (12-1/5" x 50")

SPECIAL ORDER ITEMS:

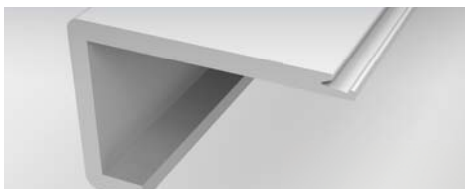
- VRDSN:** Round Stair Nose (1-3/4" x 94")
- VQRND:** Quarter Round (3/4" x 94")
- VSLCAP:** Slim Cap, Low Profile End Cap (1-3/8" x 94")

STOCKING ITEMS:



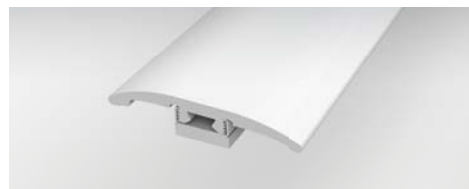
EXTRA TALL STAIR NOSE

Creates a transition to the edge of the step by overlapping the flooring on the back end. Can also be installed flush on floors with an overall thickness up to 4 mm.*



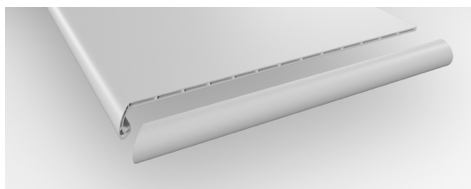
VINYL STAIR CAP

Creates a smooth and flush finish on the edges of steps by using the same vinyl flooring plank to ensure a corresponding color and texture.



SLIM TRIM 4-IN-1 TRANSITION

Performance Accessories' exclusive 4-in-1 transition allows you to utilize a single transition for four different applications.



FULL ROUND STAIR TREAD

A vinyl stair tread with pre-attached stair nosing. Can be used on steps with or without nosing.

EACH OF THE BELOW ARE ACHIEVED VIA THE SLIM TRIM 4-IN-1 TRANSITION (SHOWN ABOVE)



T-MOLDING

Used to transition between flooring of equal heights and in doorways.



HARD SURFACE REDUCER

Connects two floors of different heights.



END MOLDING

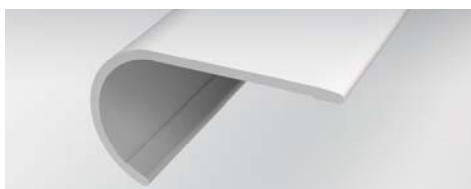
Finishing up to a threshold, sliding door, etc.



CARPET TRANSITION

Provides a smooth transition between your hard surface floor & carpet. A carpet tap down trim must be used & is sold at your local hardware store.

SPECIAL ORDER ITEMS:



ROUND STAIR NOSE

Creates a transition to the edge of the step by overlapping the flooring on the back end. Can also be installed flush on floors with an overall thickness up to 4 mm.*



QUARTER ROUND

Conceals the expansion space between the wall and the flooring.



SLIM CAP

Low profile end cap used to transition from flooring to carpet, masonry, sliding doors, and other exterior door jambs.



*References to flooring thickness refer to the total thickness of all members of the floor installation being laid upon the subfloor. This typically is comprised of the flooring plank, e.g. Vinyl or Laminate, the underlayment, either attached or loose lay and any additional vapor barriers.

2mm | 12 mil & 3mm | 20 mil
ASHER BEND™
FLEXIBLE GLUE DOWN

PROSERIES™
LUXURY VINYL FLOORING
daltile



SuperGuardX™
REINFORCED SHIELD

2mm | 12 mil & 3mm | 20 mil
ASHER BEND™
FLEXIBLE GLUE DOWN

Asher Bend™ continues to introduce comfort and style - now available in a Flexible Glue Down option. The earthy color palette, natural hardwood visual, and extra-long 9 x 71 plank create a luxurious environment and a seamless installation.

REFINED DESIGN

- 9" x 71" wood look planks
- Earthy color palette
- Embossed in Register surface for realistic look and feel
- Microbevel for realistic wood look and feel
- 2 mm thickness with 12 mil wear layer
- 3 mm thickness with 20 mil wear layer

PREMIUM PERFORMANCE

- SuperGuardX™ Technology
- 100% Waterproof
- 100% Virgin Vinyl



Cover and above photos feature Asher Bend™ Hearth 9 x 71 plank on the floor.

2mm | 12 mil & 3mm | 20 mil
ASHER BEND™
FLEXIBLE GLUE DOWN

SIZES:



9 x 71 Plank

9 x 71 WOOD LOOK PLANKS



PICKET FENCE AB21



VILLA AB22



HEARTH AB23



MANOR AB24



LODGE AB25

2mm | 12 mil & 3mm | 20 mil ASHER BEND™ FLEXIBLE GLUE DOWN



NOISE REDUCING



EASY TO CLEAN



100% WATERPROOF



100% VIRGIN VINYL

SPECIFICATIONS 2.0 mm | 12 mil

Product Type:	LVF Dry Back
Installation:	Glue Down
Thickness:	2.0 mm
Wear Layer:	12 mil (0.3048 mm)
Finish:	SuperGuard X™ Technology
Size:	9" W x 71" L Plank
Underlayment:	N/A
Bevel:	Micro Bevel
Embossing:	Embossed in Register EIR
Plank Variation:	8 Unique Planks
Sq. Ft./Carton:	53.01
Pieces/Carton:	12
Weight:	3.44 lbs per pc / 41.31 lbs per carton
Warranty:	Limited 25 Year Residential Warranty Limited 10 Year Multifamily Warranty Limited 7 Year Light Commercial Warranty

3.0 mm | 20 mil

Product Type:	LVF Dry Back
Installation:	Glue Down
Thickness:	3.0 mm
Wear Layer:	20 mil (0.508mm)
Finish:	SuperGuard X™ Technology
Size:	9" W x 71" L Plank
Underlayment:	N/A
Bevel:	Micro Bevel
Embossing:	Embossed in Register EIR
Plank Variation:	8 Unique Planks
Sq. Ft./Carton:	35.34
Pieces/Carton:	8
Weight:	5.16 lbs per pc / 41.31 lbs per carton
Warranty:	Limited Lifetime Residential Warranty Limited 15 Year Multifamily Warranty Limited 15 Year Light Commercial Warranty Limited 15 Year Commercial Warranty

Installation Advisory:	Glue Down LVF must be installed using ProSeries™ Adhesive by Daltile. See daltile.com/LVF for more information.
Stocking Platform:	2 mm 12 mil, 3 mm 20 mil
Special Order Platform:	Additional Platforms available on special order. Minimum order quantities apply. Contact your Daltile representative for additional information.
Transitions:	Transitions are offered in a Slim Trim 4-in-1 Transition, Extra Tall Stair Nose, and Full Round Stair Tread
* Special Order Transitions:	Round Stair Nose, Quarter Round, and Slim Cap

PERFORMANCE & CHARACTERISTICS

Construction:	Commercial Grade Luxury Vinyl Flooring; 100% Virgin Vinyl
Classification:	ASTM F1700 - Class III, Type B Embossed
Squareness:	ASTM F2055 - Passes - $\pm 0.010"$ max
Size and Tolerance:	ASTM F2055 - Passes - Plank Length ≤ 71 in. ± 0.094 in. (2.39 mm)
Thickness:	ASTM F386 - Passes - Nominal = ± 0.005 in.
Flexibility:	ASTM F137 - Passes - 1" mandrel
Dimensional Stability:	Passes Residential & Commercial - Res 0.25 % / (0.080 in.) avg max. Comm 0.20 % / (0.080 in.) avg. max.
Static Load Limit:	ASTM F970- Passes, Test to Limit (+ 0.005")
Residual Indentation:	ASTM F1914 - Passes - $\leq 8\%$
Resistance To Chemicals:	ASTM F925 - Passes - No more than a slight change
Resistance To Light:	ASTM F1515 - Passes - $\Delta E < 8.0$
Resistance To Heat:	ASTM F1514 - Passes - Average $\Delta E < 8.0$

INSTALLATION OPTIONS



NOTES

See daltile.com/LVF for recommended installation and care guidelines.



7834 C.F. Hawn Freeway,
Dallas, Texas 75217 | 1.800.933.TILE

To view the complete collection of
Daltile® products and information,
visit our website at daltile.com/LVF

PROSERIES™
LUXURY VINYL FLOORING



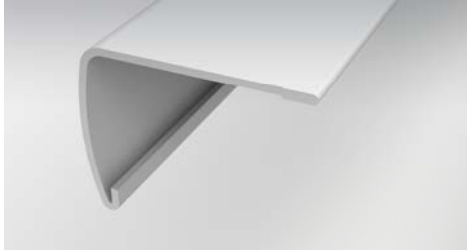
©2024 Dal-Tile, LLC (3/24)

FLEXIBLE GLUE DOWN ACCESSORIES

Six trims and moldings that are designed to coordinate with each of our existing colors within the collection.

VRDSN:	Round Stair Nose (1-3/4" x 94")	EXTSN:	Extra Tall Stair Nose (2" x 94")
VQRND:	Quarter Round (3/4" x 94")	RNDSTRD:	Full Round Stair Tread (12-1/5" x 50")
VSLCAP:	Slim Cap, Low Profile End Cap (1-3/8" x 94")	SLIMT:	Slim Trim 4-in-1 Transition (2" x 94"), Four unique trims and moldings in one single SKU (T-Molding, Hard Surface Reducer, Carpet Transition, End Cap)

STOCKING ITEMS



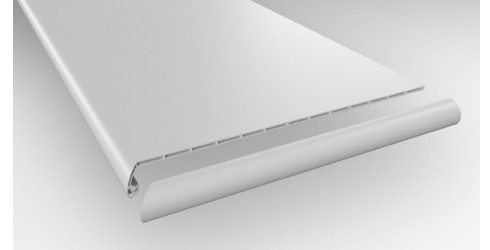
Extra Tall Stair Nose

Creates a transition to the edge of the step by overlapping the flooring on the back end. Can also be installed flush on floors with an overall thickness up to 4 mm.*



Slim Trim 4-in-1 Transition

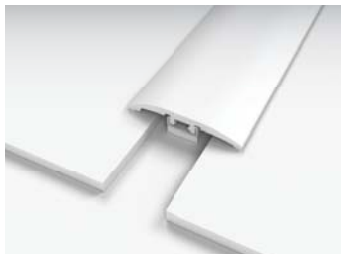
Performance Accessories' exclusive 4-in-1 transition allows you to utilize a single transition for four different applications.



Full Round Stair Tread

A vinyl stair tread with pre-attached stair nosing. Can be used on steps with or without nosing.

EACH OF THE BELOW ARE ACHIEVED VIA THE SLIM TRIM 4-IN-1 TRANSITION (SHOWN ABOVE)



T-Molding

Used to transition between flooring of equal heights and in doorways.



Hard Surface Reducer

Connects two floors of different heights.



End Molding

Finishing up to a threshold, sliding door, etc.



Carpet Transition

Provides a smooth transition between your hard surface floor & carpet. A carpet tap down trim must be used & is sold at your local hardware store.

SPECIAL ORDER ITEMS:



Round Stair Nose

Creates a transition to the edge of the step by overlapping the flooring on the back end. Can also be installed flush on floors with an overall thickness up to 4 mm.*



Quarter Round

Conceals the expansion space between the wall and the flooring.



Slim Cap

Low profile end cap used to transition from flooring to carpet, masonry, sliding doors, and other exterior door jambs.



*References to flooring thickness refer to the total thickness of all members of the floor installation being laid upon the subfloor. This typically is comprised of the flooring plank, e.g. Vinyl or Laminate, the underlayment, either attached or loose lay and any additional vapor barriers.