

# KEYSTONES™



PATTERN GUIDE

# FROM THE DRAWING BOARD TO REALITY



At Daltile, if you can imagine it, we can create it. From vivid colors and on-trend shapes to unique patterns and bold borders, one simple design can turn your space into an incredible work of art. Keystones Custom Design Services gives you the creative freedom to make your design dreams a reality.

## MOSAIC BORDERS & PATTERNS

Set your imagination free! Our colorful mosaics enable you to create patterned designs that complement any design scheme. Borders, corners and plaids blend seamlessly to create intricate and unique spaces. With custom designs, you'll never run out of ideas.

## BOLD & ENDLESS PATTERNS

Daltile is proud to provide hundreds of patterns and borders that are carefully selected for their broad design appeal. Patterns are organized by sizes:

- 1 x 1 Standard Patterns
- 2 x 2 Standard Patterns
- 2 x 1 Standard Patterns
- Combination Patterns
- 1 x 1 Hexagon Patterns
- 2 x 2 Hexagon Patterns
- 2 x 4 Patterns
- Penny Round Patterns
- 1/2 Hex Patterns

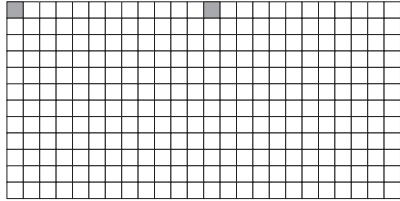
If you're looking to customize further, you can modify any of our patterns or create your own. Simply use the custom design worksheet attached or send us your own sketch.

## COLORS & OPTIONS

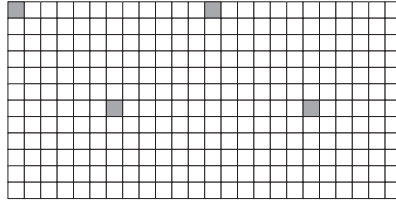
The right color and finish can bring any pattern to life. That's why we offer a wide spectrum of tile colors and finishes to create an unforgettable look.

# 1 x 1 Standard Patterns

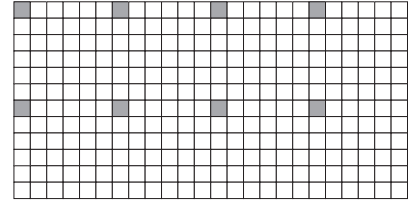
## FIELD PATTERNS



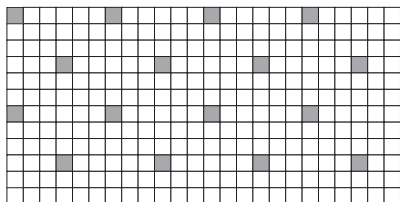
DP2001 □ 99% ■ 1%



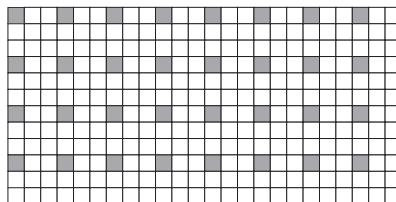
DP2002 □ 99% ■ 1%



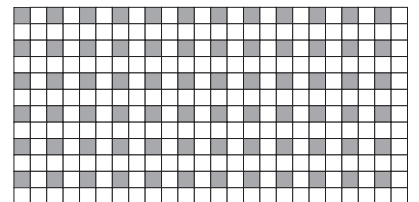
DP2003 □ 97% ■ 3%



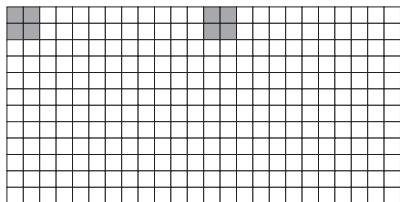
DP2004 □ 94% ■ 6%



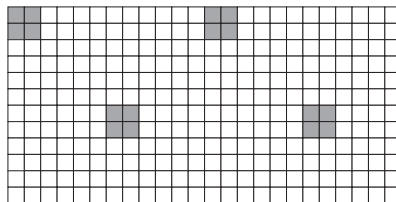
DP2005 □ 89% ■ 11%



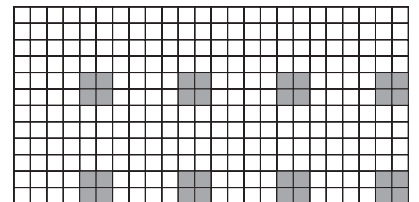
DP2006 □ 75% ■ 25%



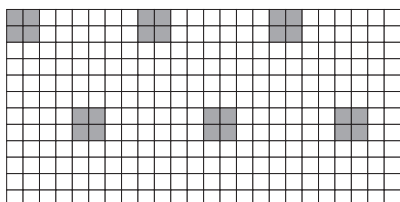
DP2007 □ 97% ■ 3%



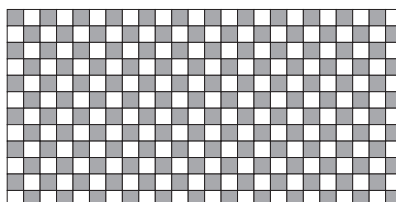
DP2008 □ 94% ■ 6%



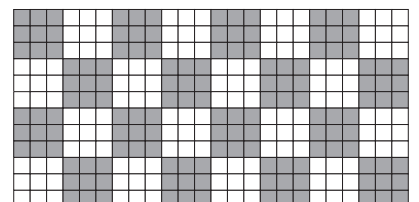
SP8108 ■ 11% □ 89%



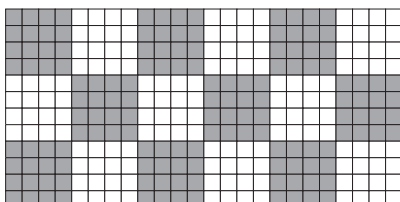
DP2010 □ 92% ■ 8%



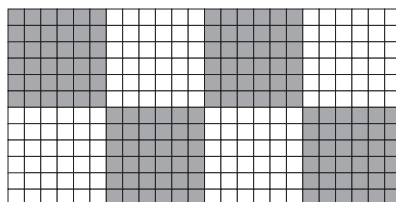
DP2011 □ 50% ■ 50%



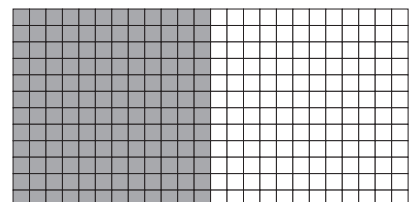
DP2012 □ 50% ■ 50%



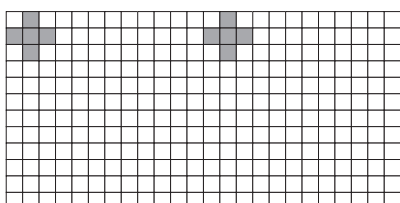
DP2013\* □ 50% ■ 50%



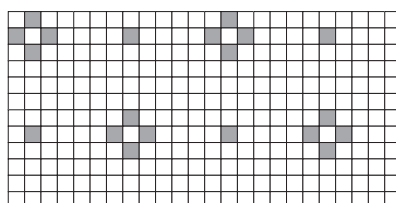
DP2014 □ 50% ■ 50%



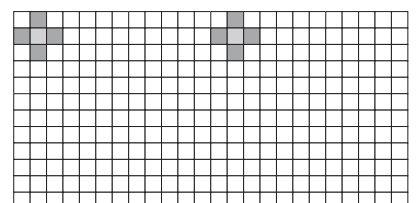
DP2015 □ 50% ■ 50%



DP2016 □ 97% ■ 3%



DP2020 □ 93% ■ 7%

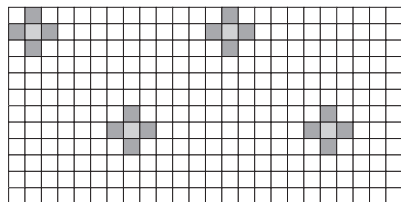


DP2022 ■ 1% □ 97% ■ 2%

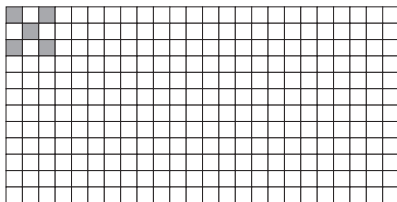
\*Offset sheet

# 1 x 1 Standard Patterns

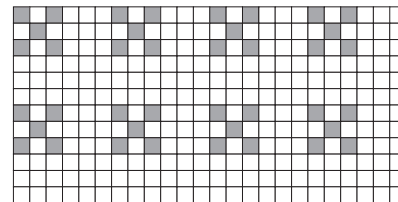
## FIELD PATTERNS



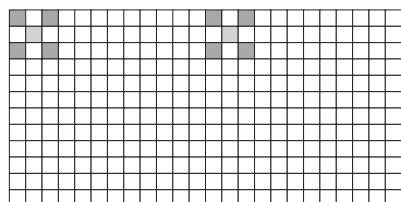
DP2023 1% 93% 6%



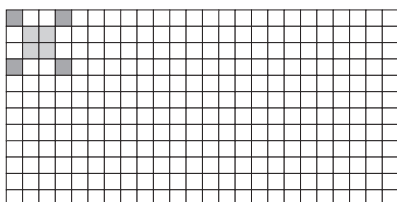
DP2024\* 98% 2%



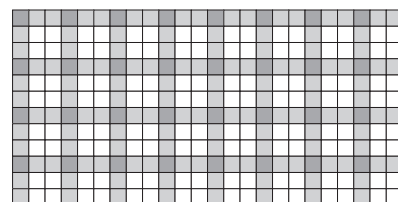
DP2025 86% 14%



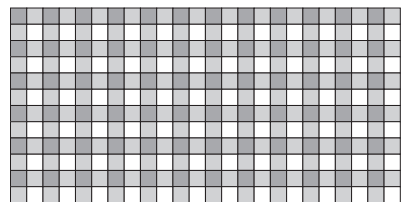
DP2026 1% 97% 2%



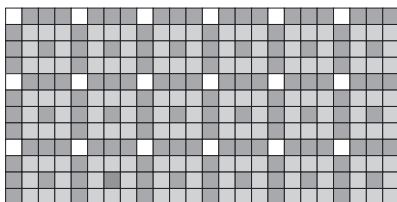
DP2027 1% 98% 1%



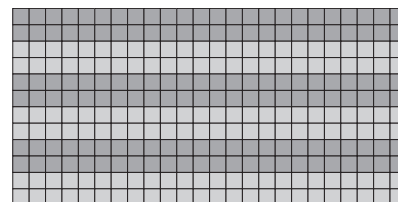
DP2033 44% 44% 12%



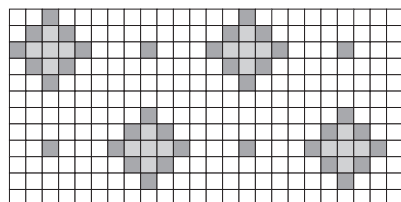
DP2034 50% 25% 25%



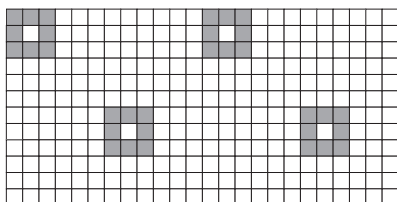
DP2036 50% 6% 44%



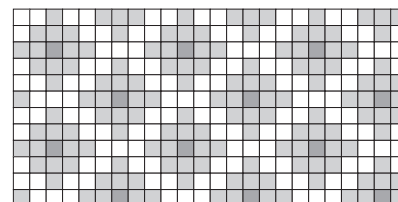
DP2038 50% 50%



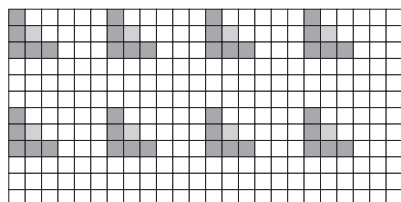
DP2040 6% 81% 13%



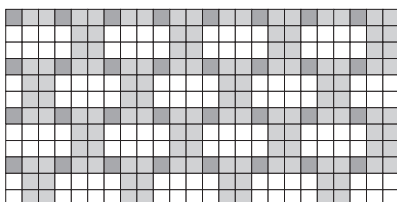
DP2041 89% 11%



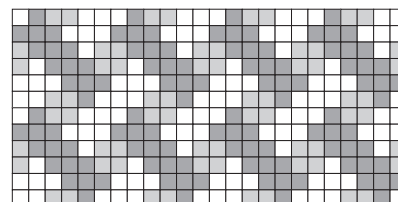
DP2043 50% 46% 4%



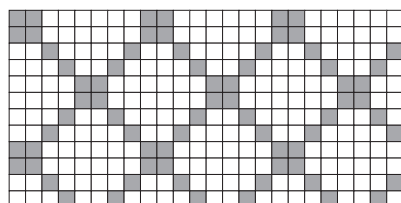
DP2044 3% 83% 14%



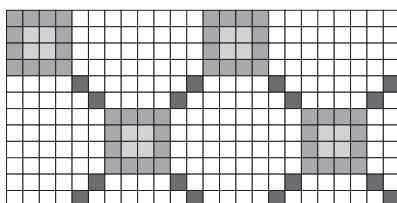
DP2045 44% 44% 12%



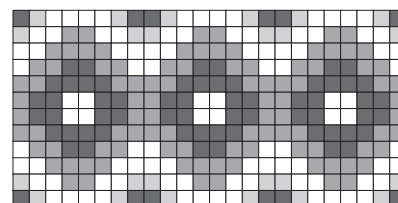
DP2047 22% 39% 39%



DP2049 75% 25%



DP2050 6% 17% 71% 6%

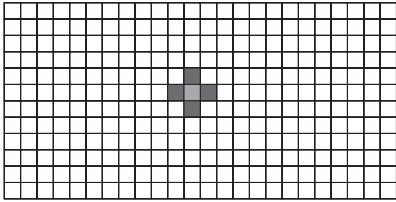


DP2055 9% 33% 33% 25%

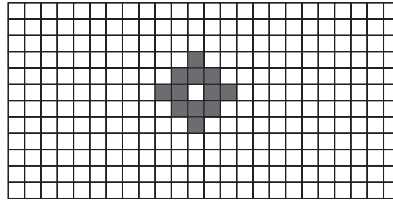
\*Offset sheet

# 1 x 1 Standard Patterns

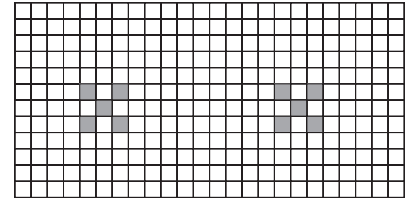
## FIELD PATTERNS



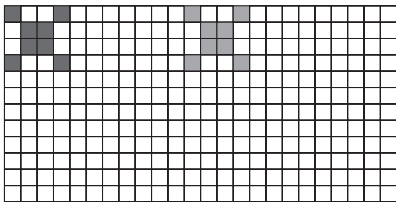
SP8109\* ■ 2% ■ 1% □ 97%



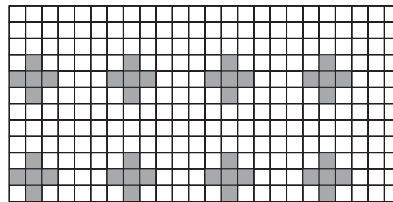
SP8110\* ■ 4% □ 96%



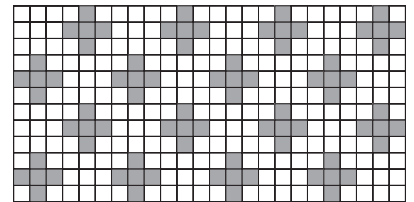
SP8112 ■ 3% □ 97%



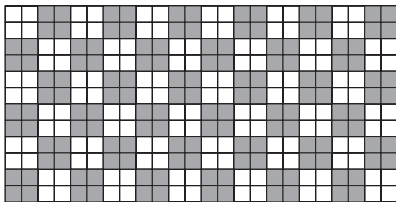
SP8115\* ■ 3% ■ 3% □ 94%



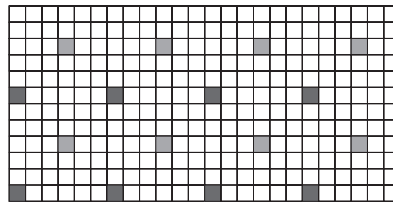
SP8117 ■ 14% □ 86%



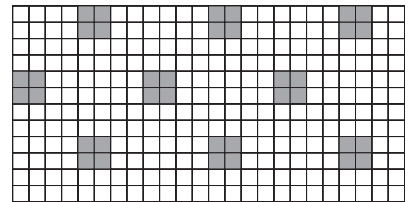
SP8118 ■ 28% □ 72%



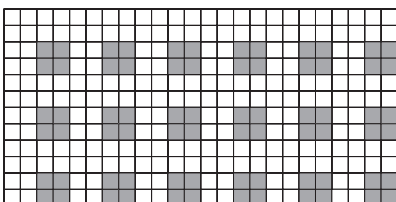
SP8121 ■ 50% □ 50%



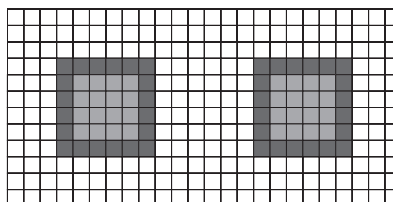
SP8125 ■ 3% ■ 3% □ 49%



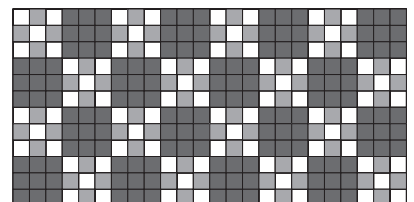
SP8126\* ■ 12% □ 88%



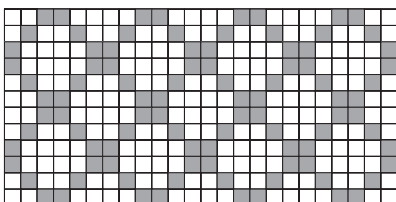
SP8127 ■ 25% □ 75%



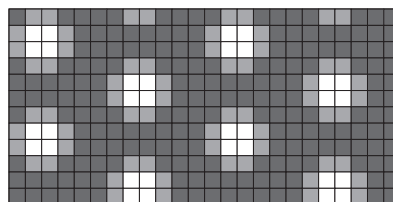
SP8128 ■ 14% ■ 11% □ 75%



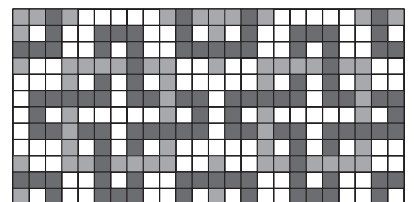
SP8131 ■ 50% ■ 22% □ 28%



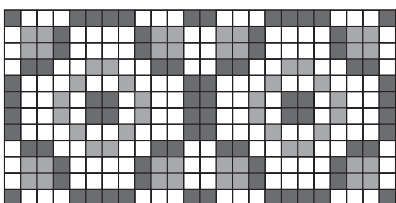
SP8132 ■ 33% □ 67%



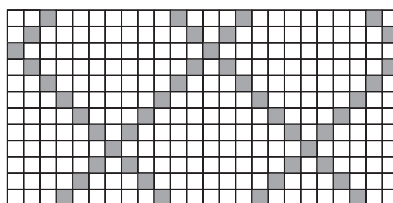
SP8133 ■ 67% ■ 22% □ 11%



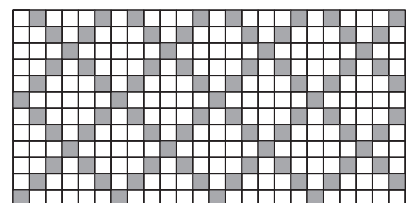
SP8134 ■ 36% ■ 20% □ 44%



SP8135 ■ 27% ■ 19% □ 54%



SP8136 ■ 15% □ 85%

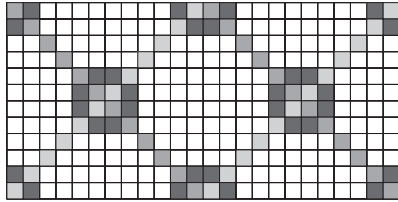


SP8137 ■ 28% □ 72%

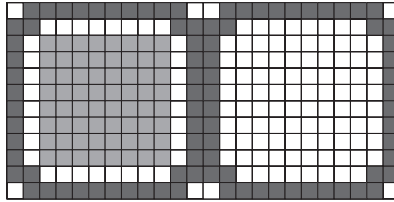
\*Offset sheet

# 1 x 1 Standard Patterns

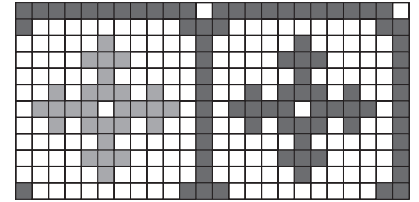
## FIELD PATTERNS



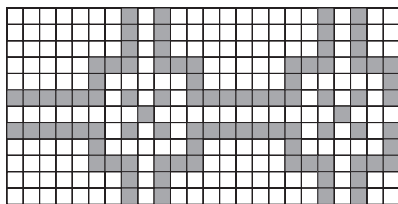
SP8138 ■ 11% ■ 8% ■ 8% □ 73%



SP8139\* ■ 30% ■ 22% □ 48%



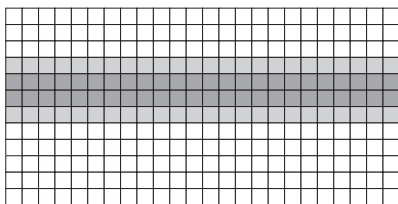
SP8140\* ■ 28% ■ 10% □ 62%



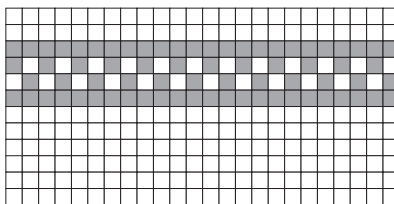
SP8141 ■ 31% □ 69%

# 1 x 1 Standard Patterns

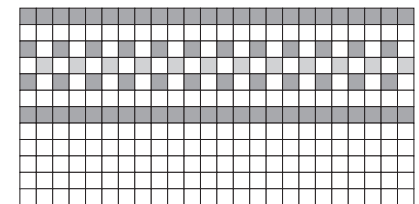
## BORDER PATTERNS



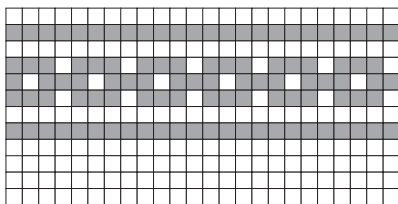
DB2501 ■ 17% □ 66% ■ 17%



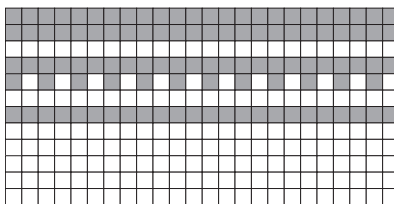
DB2503 □ 75% ■ 25%



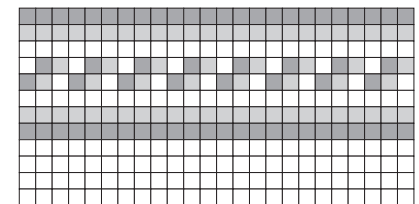
DB2504 ■ 4% □ 71% ■ 25%



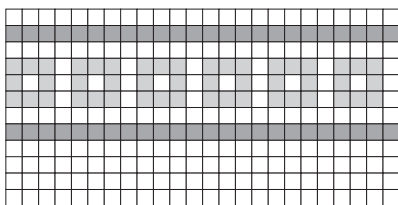
DB2505 □ 65% ■ 35%



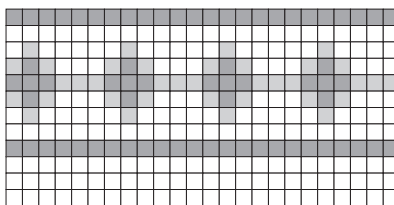
DB2507 □ 63% ■ 37%



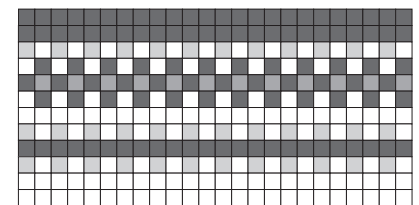
DB2509 ■ 22% □ 56% ■ 22%



DB2510 ■ 17% □ 66% ■ 17%



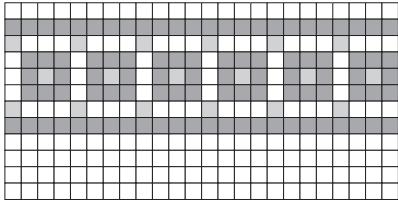
DB2516 ■ 12% □ 64% ■ 24%



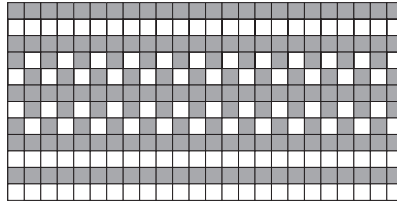
DB2518 ■ 4% ■ 12% □ 46% ■ 38%

# 1 x 1 Standard Patterns

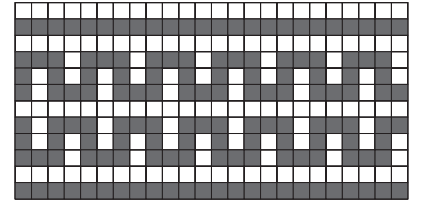
## FIELD PATTERNS



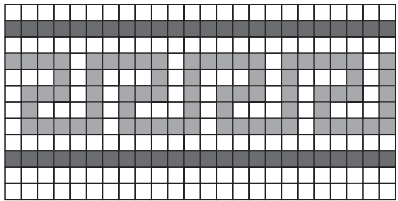
DB2521    ■ 7%   □ 60%   ■ 33%



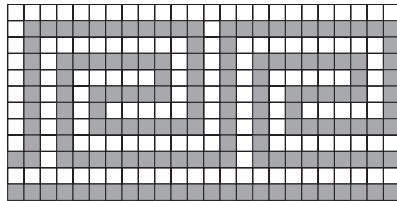
SB1115    ■ 58%   □ 42%



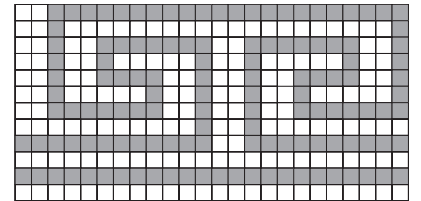
SB1117    ■ 50%   □ 50%



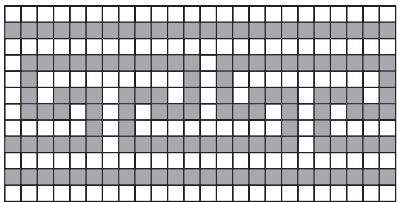
SB1118    ■ 17%   ■ 25%   □ 58%



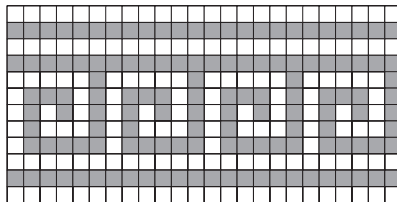
SB1119    ■ 50%   □ 50%



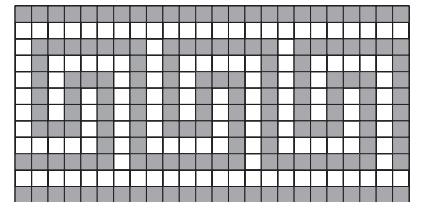
SB1120    ■ 44%   □ 56%



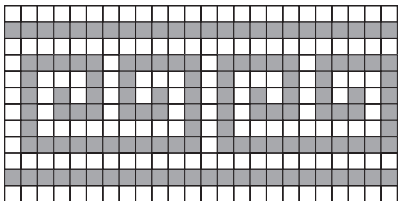
SB1121    ■ 44%   □ 56%



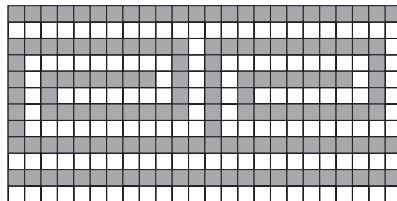
SB1122    ■ 46%   □ 54%



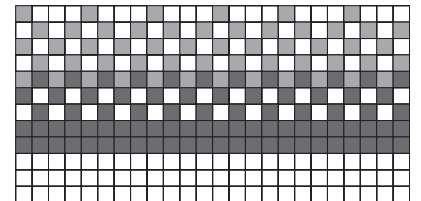
SB1123    ■ 50%   □ 50%



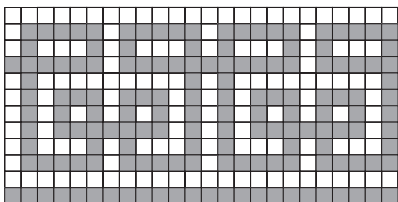
SB1124    ■ 45%   □ 55%



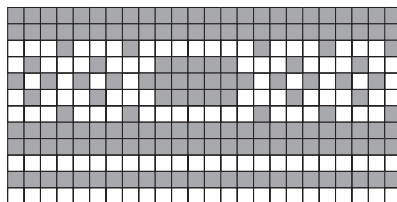
SB1125    ■ 50%   □ 50%



SB1126    ■ 29%   ■ 19%   □ 52%

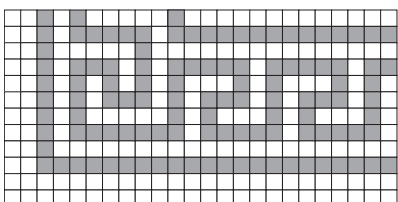


SB1127    ■ 53%   □ 47%

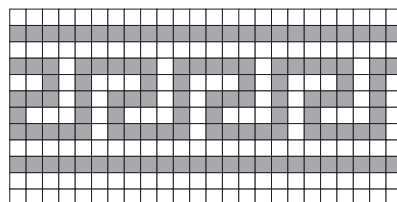


SB1128    ■ 58%   □ 42%

## BORDERS AND CORNERS



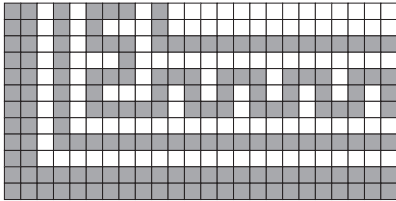
DB2525 CORNER    □ 61%   ■ 39%



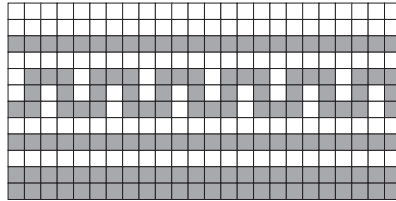
DB2525 BORDER    □ 58%   ■ 42%

# 1 x 1 Standard Patterns

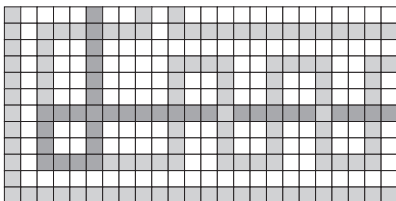
## BORDER PATTERNS



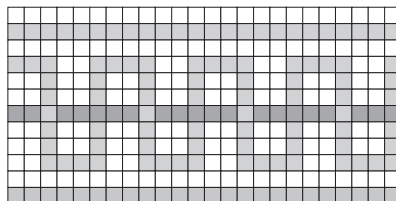
DB2526 CORNER □ 44% ■ 56%



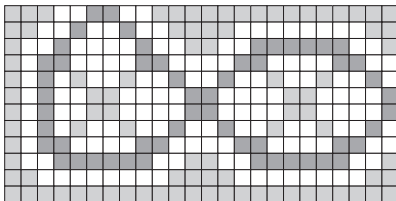
DB2526 BORDER □ 50% ■ 50%



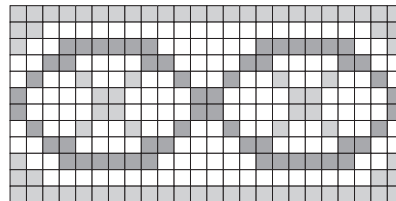
DB2530 CORNER □ 37% □ 51% ■ 12%



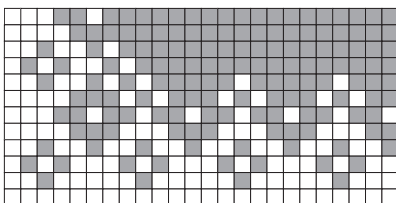
DB2530 BORDER □ 40% □ 53% ■ 7%



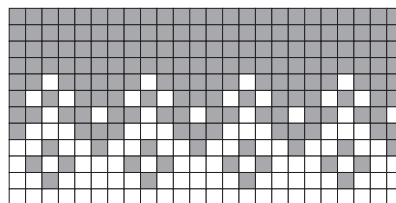
DB2531 CORNER □ 31% □ 50% ■ 19%



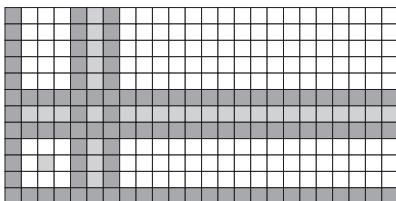
DB2531 BORDER □ 31% □ 50% ■ 19%



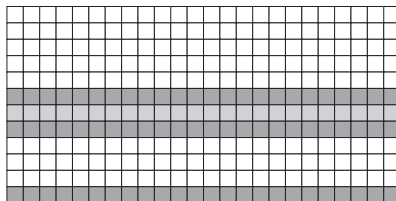
DB2532 CORNER □ 47% ■ 53%



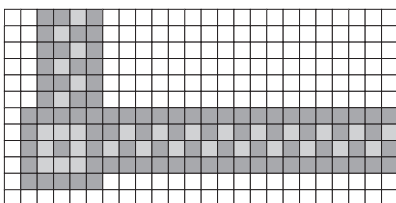
DB2532 BORDER □ 37% ■ 63%



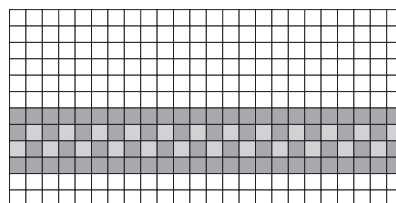
DB2535 CORNER □ 11% □ 55% ■ 34%



DB2535 BORDER □ 8% □ 67% ■ 25%



DB2536 CORNER □ 11% □ 58% ■ 31%

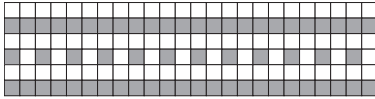


DB2536 BORDER □ 8% □ 67% ■ 25%

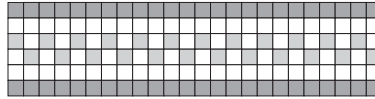


# 1 x 1 Standard Patterns

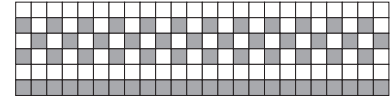
## SIX-INCH BORDERS



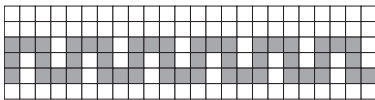
DB2537 □ 58% ■ 42%



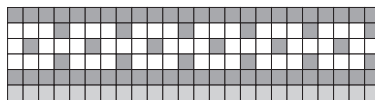
DB2538 □ 17% □ 50% ■ 33%



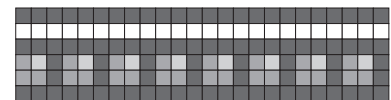
DB2539 □ 58% ■ 42%



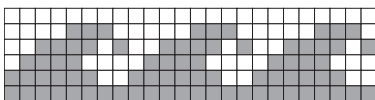
DB2541 □ 67% ■ 33%



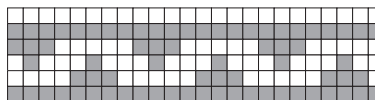
DB2542 □ 17% □ 37% ■ 46%



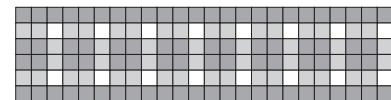
DB2545 □ 5% ■ 17% □ 17% ■ 61%



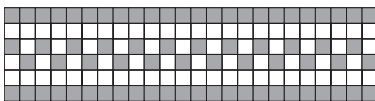
DB2546 □ 46% ■ 54%



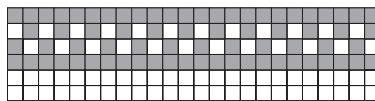
DB2547 □ 50% ■ 50%



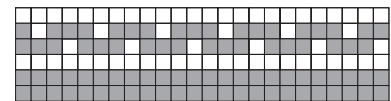
DB2548 □ 33% □ 11% ■ 56%



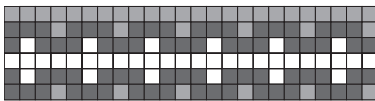
SB1102 ■ 50% □ 50%



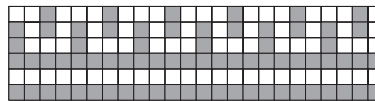
SB1103 ■ 50% □ 50%



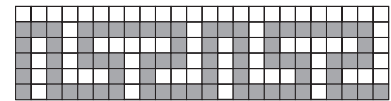
SB1105 ■ 58% □ 42%



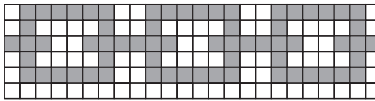
SB1106 ■ 50% ■ 25% □ 25%



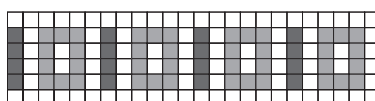
SB1107 ■ 50% □ 50%



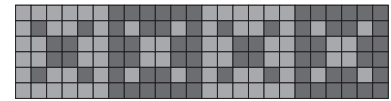
SB1108 ■ 50% □ 50%



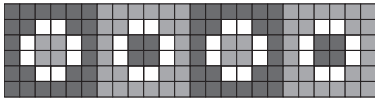
SB1110 □ 46% □ 54%



SB1111 ■ 11% ■ 28% □ 61%



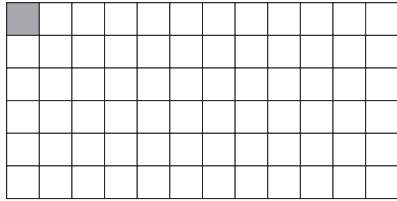
SB1112 ■ 50% ■ 50%



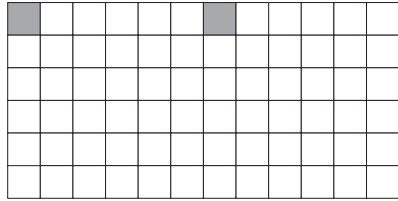
SB1113 ■ 39% ■ 39% □ 22%

# 2 x 2 Standard Patterns

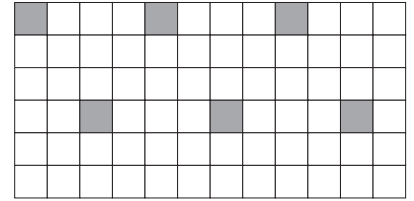
## FIELD PATTERNS



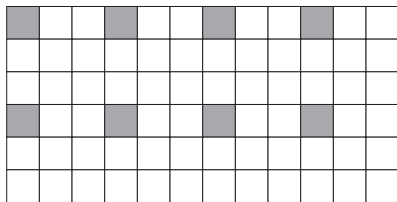
DP3001 □ 99% ■ 1%



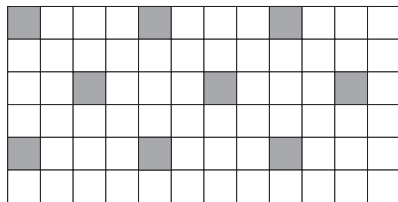
DP3002 □ 97% ■ 3%



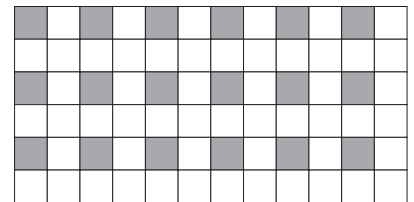
DP3003 □ 92% ■ 8%



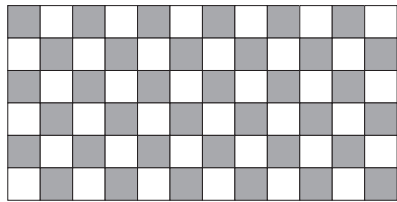
DP3004 □ 89% ■ 11%



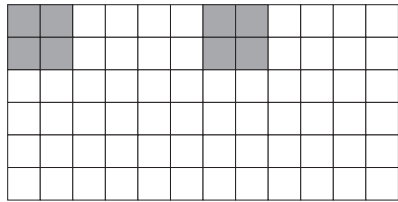
DP3005\* □ 87% ■ 13%



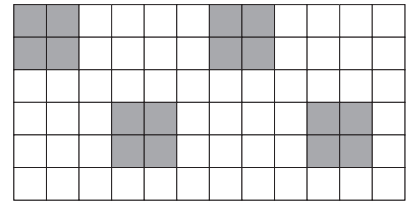
DP3006 □ 75% ■ 25%



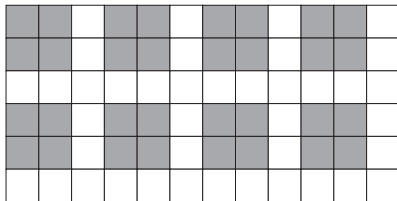
DP3007 □ 50% ■ 50%



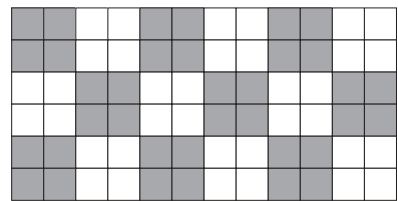
DP3008 □ 89% ■ 11%



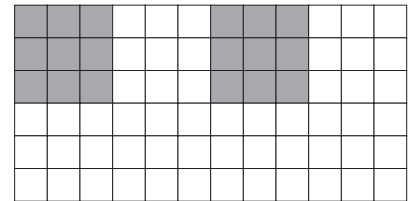
DP3009 □ 78% ■ 22%



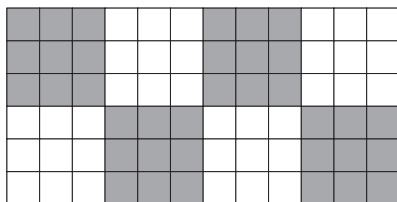
DP3010 □ 56% ■ 44%



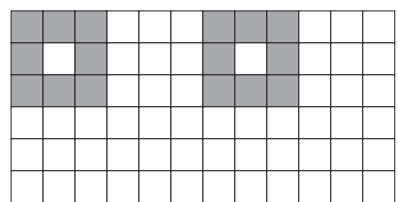
DP3011\* □ 50% ■ 50%



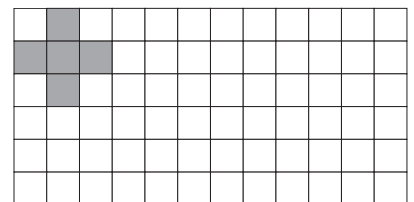
DP3012 □ 75% ■ 25%



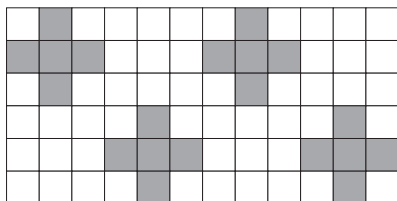
DP3013 □ 50% ■ 50%



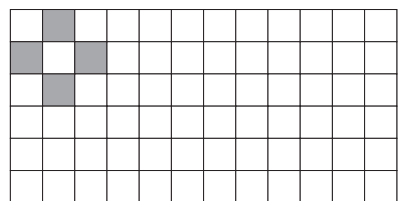
DP3014 □ 78% ■ 22%



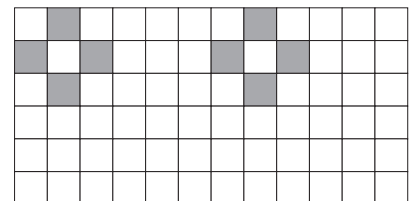
DP3015\* □ 93% ■ 7%



DP3016 □ 72% ■ 28%



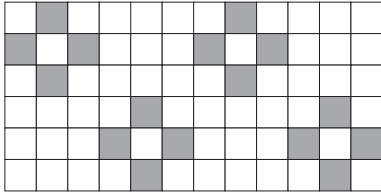
DP3017\* □ 94% ■ 6%



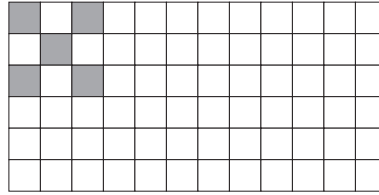
DP3018 □ 89% ■ 11%

# 2 x 2 Standard Patterns

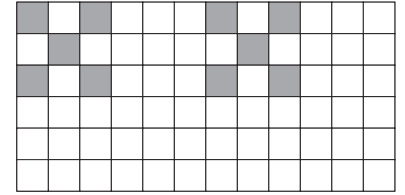
## FIELD PATTERNS



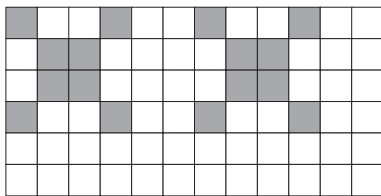
DP3019 □ 78% ■ 22%



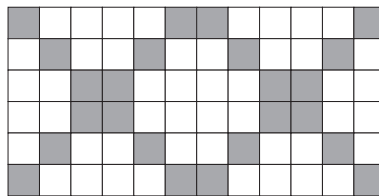
DP3020\* □ 93% ■ 7%



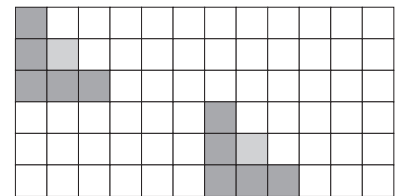
DP3021 □ 86% ■ 14%



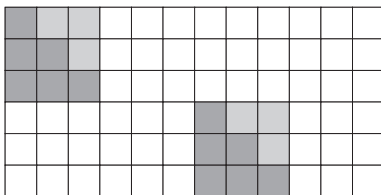
DP3022 □ 78% ■ 22%



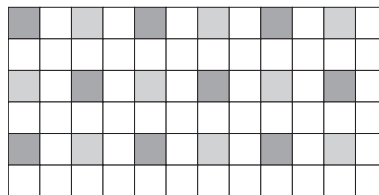
DP3023 □ 67% ■ 33%



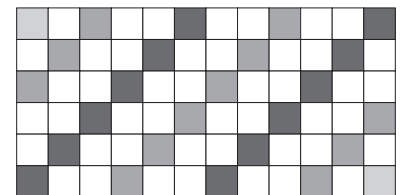
DP3024 ■ 3% □ 83% ■ 14%



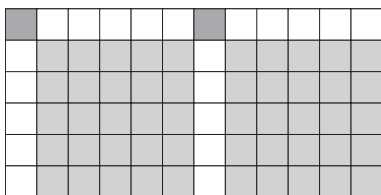
DP3025 ■ 8% □ 75% ■ 17%



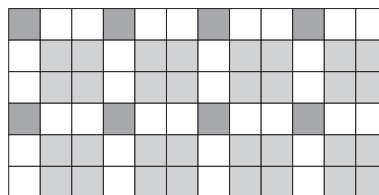
DP3027\* ■ 12% □ 76% ■ 12%



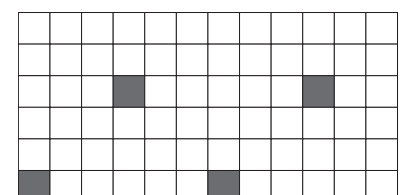
DP3028 ■ 3% ■ 17% □ 63% ■ 17%



DP3029 ■ 69% □ 28% ■ 3%

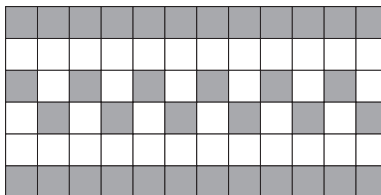


DP3032 ■ 44% □ 44% ■ 12%

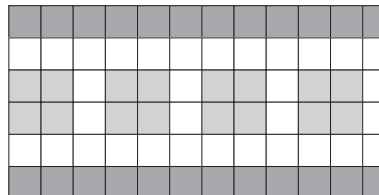


SP8202 □ 6% ■ 94%

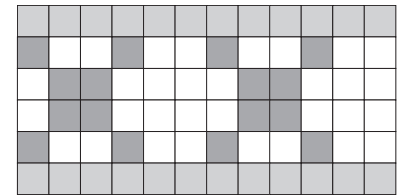
## BORDER PATTERNS



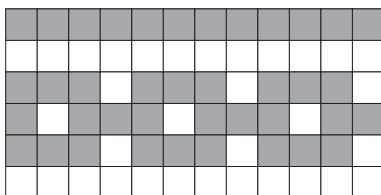
DB3501 □ 50% ■ 50%



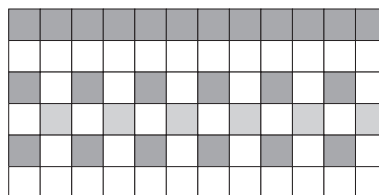
DB3502 ■ 17% □ 50% ■ 33%



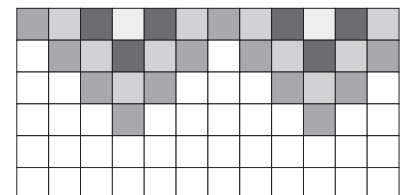
DB3503 ■ 33% □ 45% ■ 22%



DB3505 □ 46% ■ 54%



DB3506 ■ 8% □ 59% ■ 33%

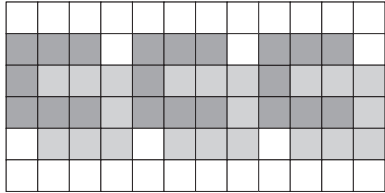


DB3508 □ 3% ■ 14% ■ 8% □ 58% ■ 17%

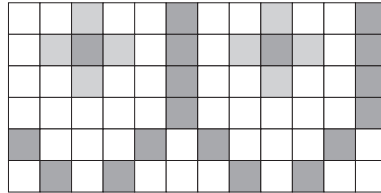
\*Offset sheet

# 2 x 2 Standard Patterns

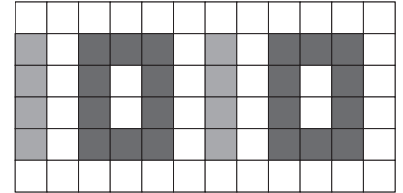
## BORDER PATTERNS



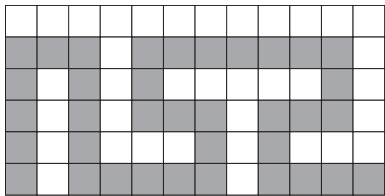
DB3510    ■ 29% □ 42% ■ 29%



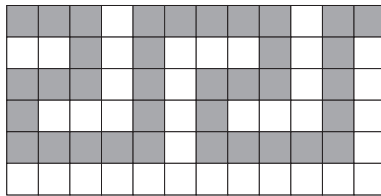
DB3513    ■ 11% □ 64% ■ 25%



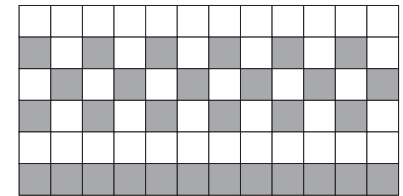
SB1201    ■ 28% ■ 11% □ 61%



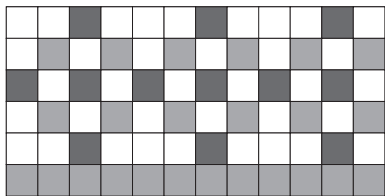
SB1204    ■ 50% □ 50%



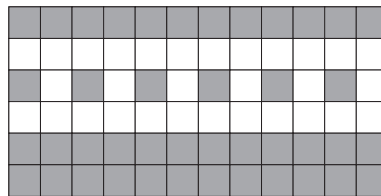
SB1205    ■ 50% □ 50%



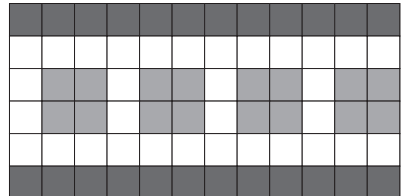
SB1207    ■ 42% □ 58%



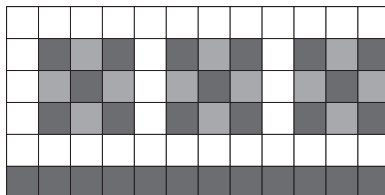
SB1209    ■ 17% ■ 33% □ 50%



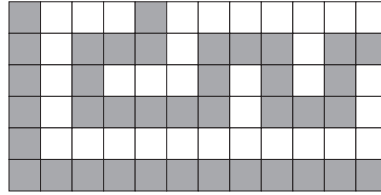
SB1210    ■ 58% □ 42%



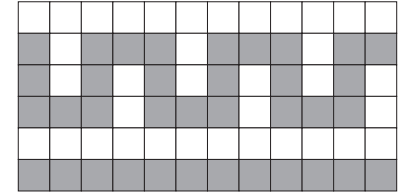
SB1211    ■ 34% ■ 22% □ 44%



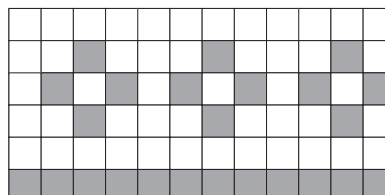
SB1212    ■ 37% ■ 17% □ 46%



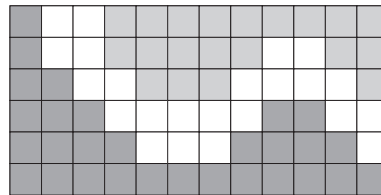
DB3511CORNER    □ 47% ■ 53%



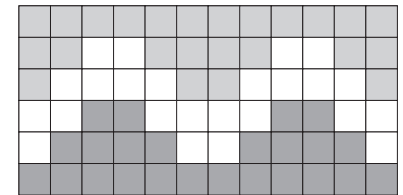
DB3511BORDER    □ 50% ■ 50%



SB1213    ■ 33% □ 67%



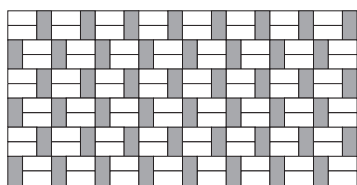
DB3514 CORNER    ■ 28% □ 32% ■ 40%



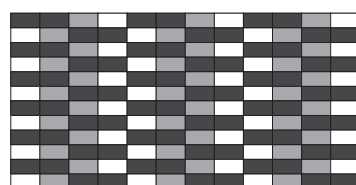
DB3514 BORDER    ■ 33% □ 34% ■ 33%

# 2 x 1 Standard Patterns

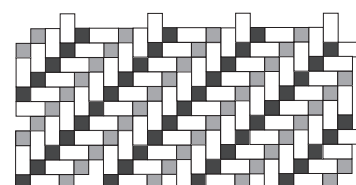
## FIELD PATTERNS



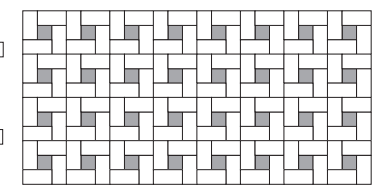
SP2603    □ 67% ■ 33%



SP2606    □ 25% ■ 25% ■ 50%



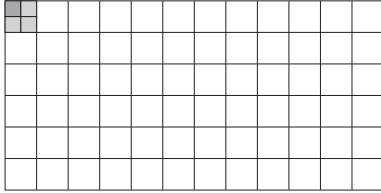
SP2701    □ 70% ■ 15% ■ 15%



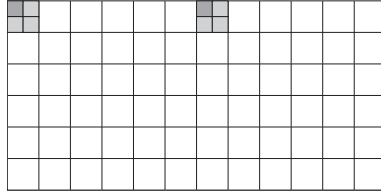
D0002IWIND    ■ 11% □ 89%

# Combination Patterns

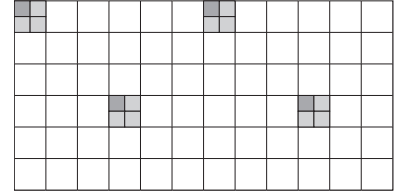
## FIELD PATTERNS



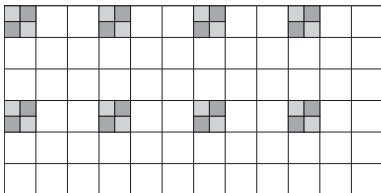
DP5001 1% 1"x1" 98% 2"x2" 1% 1"x1"



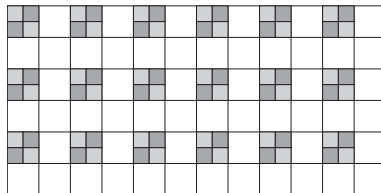
DP5002 1% 1"x1" 98% 2"x2" 1% 1"x1"



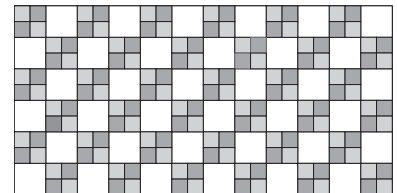
DP5003 4% 1"x1" 95% 2"x2" 1% 1"x1"



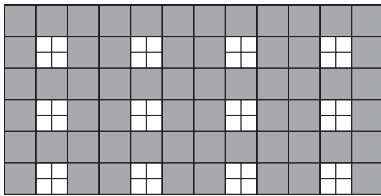
DP5004 6% 1"x1" 88% 2"x2" 6% 1"x1"



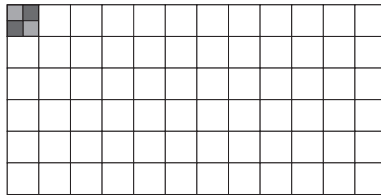
DP5005 12% 1"x1" 76% 2"x2" 12% 1"x1"



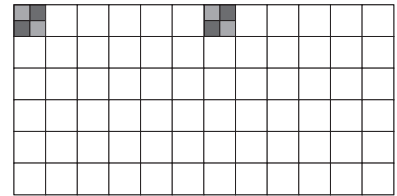
DP5006 25% 1"x1" 50% 2"x2" 25% 1"x1"



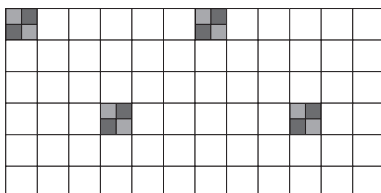
DP5015 17% 1"x1" 83% 2"x2"



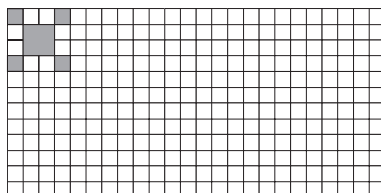
SP8301\* 1% 1"x1" 98% 2"x2" 1% 1"x1"



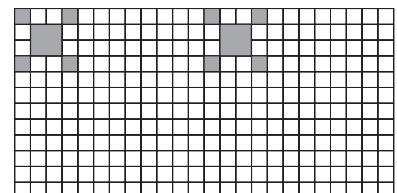
SP8302 1% 1"x1" 98% 2"x2" 1% 1"x1"



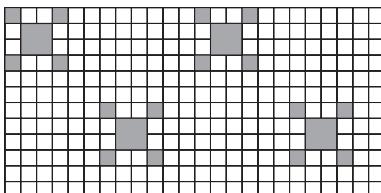
SP8303 3% 1"x1" 94% 2"x2" 3% 1"x1"



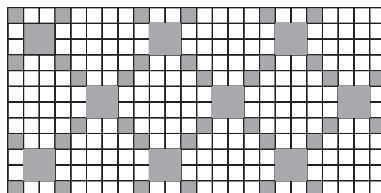
SP8310\* 1% 2"x2" 1% 1"x1" 98% 1"x1"



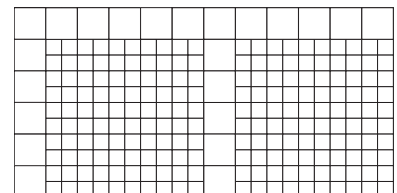
SP8311 3% 2"x2" 3% 1"x1" 94% 1"x1"



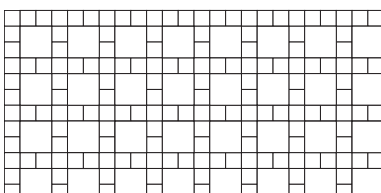
SP8312 6% 2"x2" 6% 1"x1" 88% 1"x1"



SP8313\* 12% 2"x2" 12% 1"x1" 76% 1"x1"



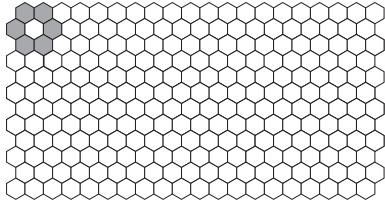
SP8319 30% 2"x2" 70% 1"x1"



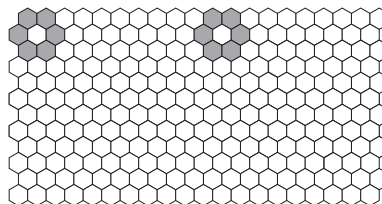
SP8320 44% 2"x2" 56% 1"x1"

# 1 x 1 Hexagon Patterns

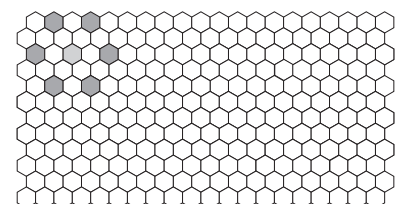
## FIELD PATTERNS



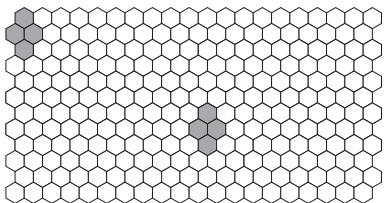
DP6001\* □ 98% ■ 2%



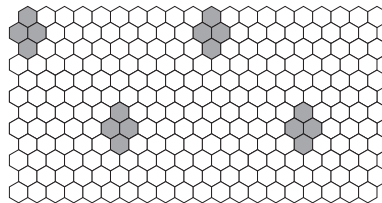
DP6002 □ 95% ■ 5%



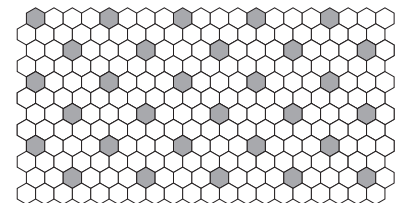
DP6003 □ 97% ■ 2% ▒ 1%



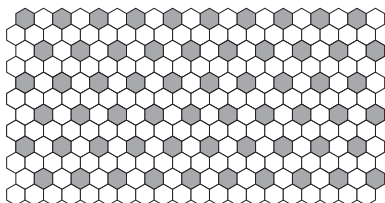
DP6004 □ 96% ■ 4%



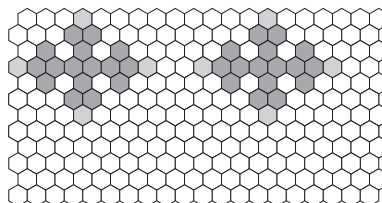
DP6005 □ 7% ■ 93%



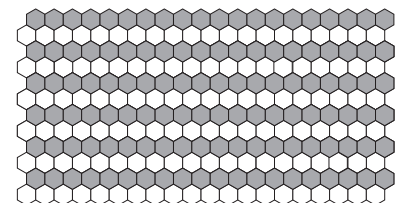
DP6006 □ 88% ■ 12%



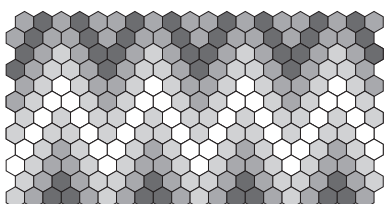
DP6007 □ 75% ■ 25%



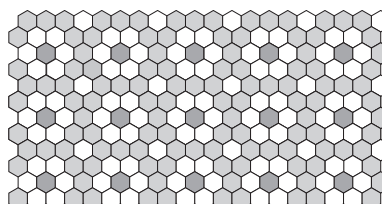
DP6009 □ 3% ▒ 84% ■ 13%



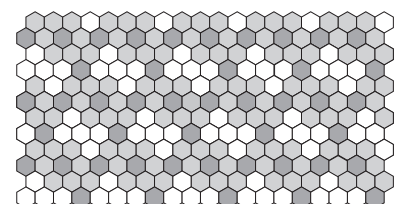
DP6015 □ 50% ■ 50%



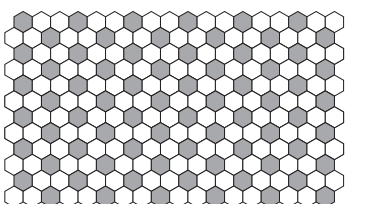
DP6017 □ 17% ▒ 33% ■ 33% ■ 17%



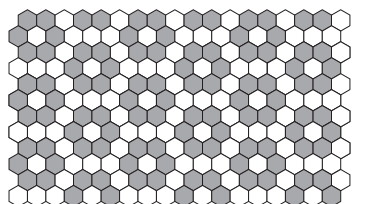
DP6018 □ 44% ▒ 50% ■ 6%



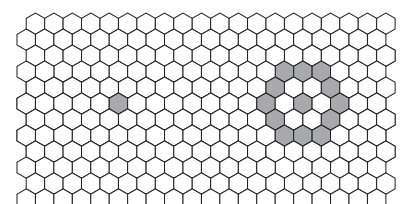
DP6019 □ 31% ▒ 50% ■ 19%



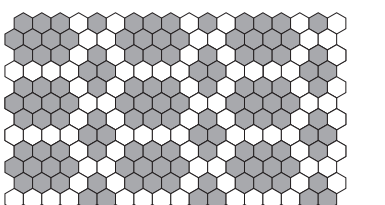
SP8403 12x18 Sheet □ 67% ■ 33%



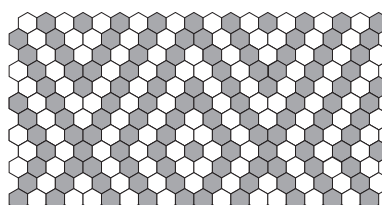
SP8404 12x18 Sheet □ 50% ■ 50%



SP8408 □ 94% ■ 6%



SP8409 12x18 Sheet □ 42% ■ 58%



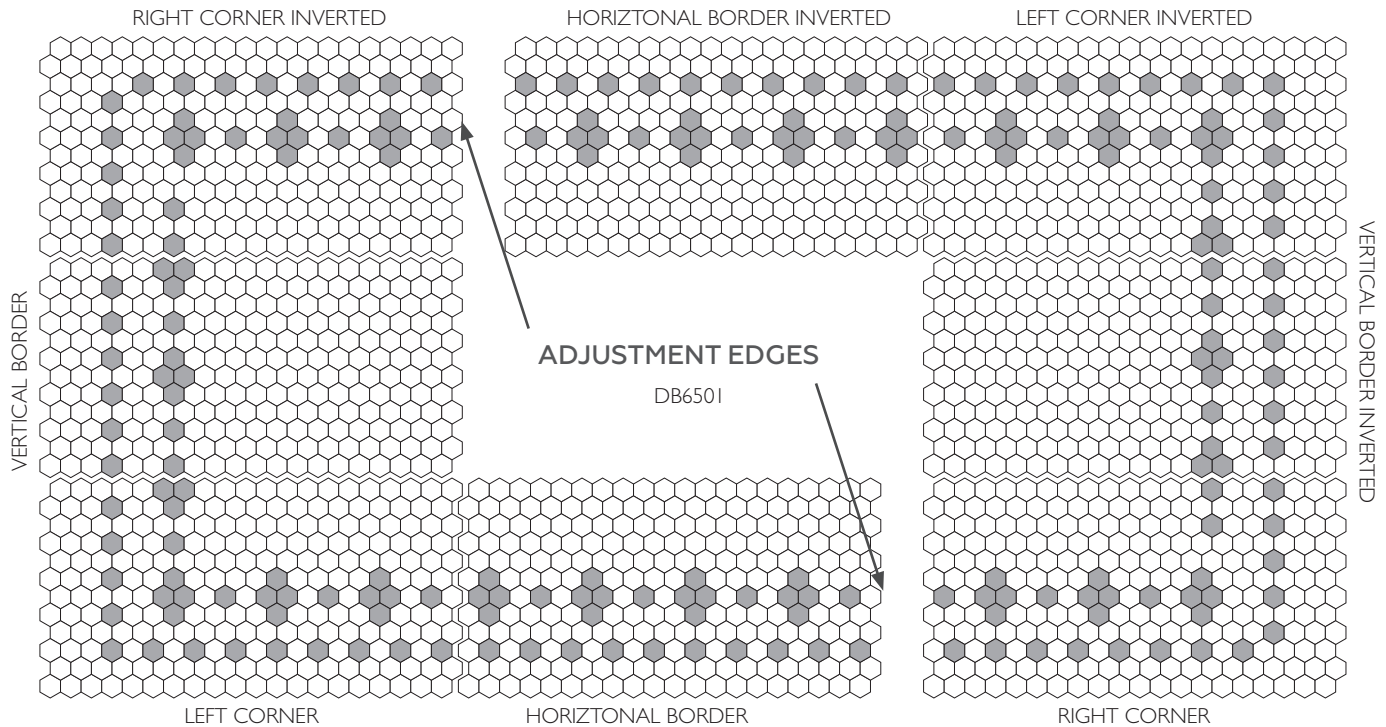
SP8410 □ 50% ■ 50%

\*Offset sheet

# 1 x 1 Hexagon Patterns

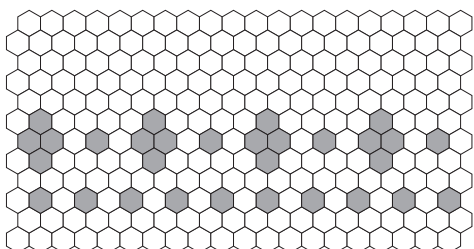
## BORDERS & CORNERS

If a Hexagon border is required, you must provide a plan of the area with dimensions, because the Hexagon configuration precludes interchanging sheets.



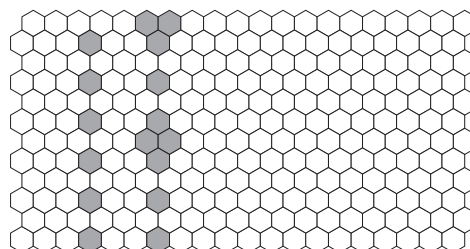
TO ALIGN PATTERN AT ADJUSTMENT EDGES, REMOVE 2 ROWS

HORIZONTAL BORDER



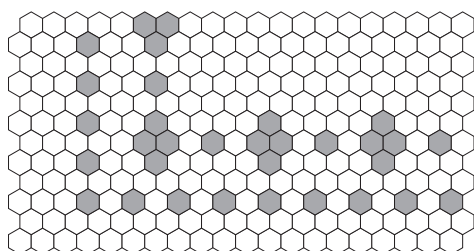
DB650I BORDER (H)      □ 87%      ■ 13%

VERTICAL BORDER



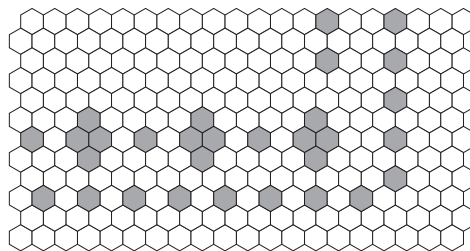
DB650I BORDER (V)      □ 93%      ■ 7%

LEFT CORNER



DB650I CORNER (L)      □ 87%      ■ 13%

RIGHT CORNER

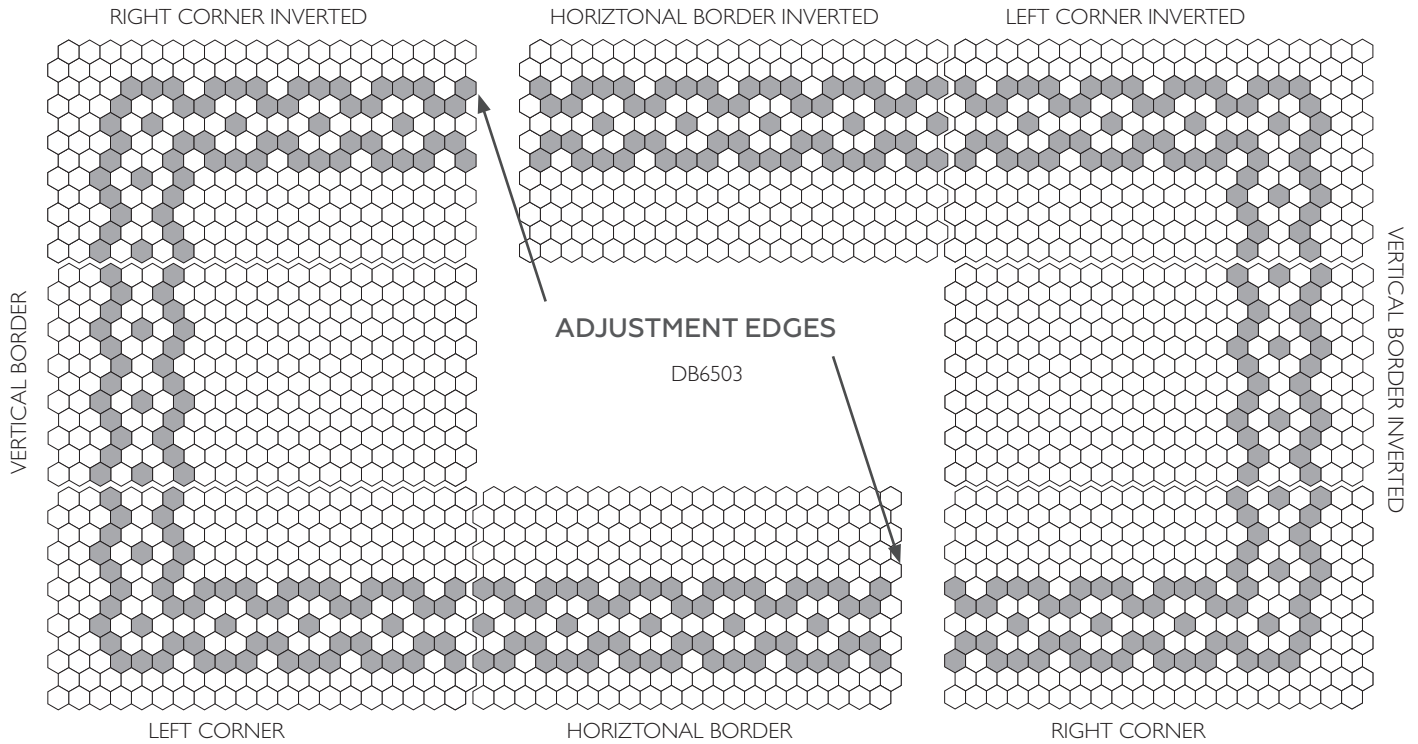


DB650I CORNER (R)      □ 87%      ■ 13%

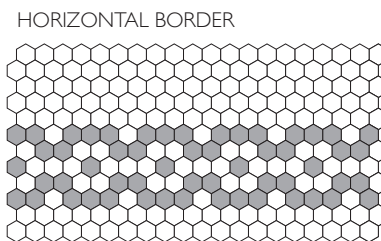
# 1 x 1 Hexagon Patterns

## BORDERS & CORNERS

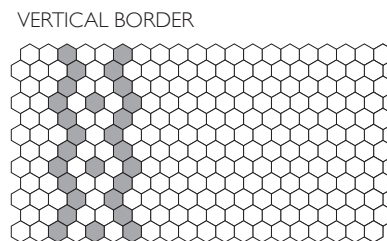
If a Hexagon border is required, you must provide a plan of the area with dimensions, because the Hexagon configuration precludes interchanging sheets.



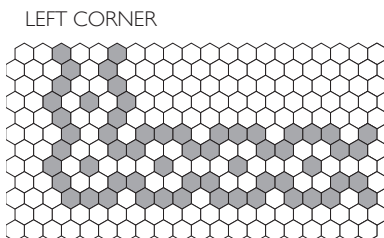
TO ALIGN PATTERN AT ADJUSTMENT EDGES, REMOVE 3 ROWS, OR ADD 1 ROW TO LOOK LIKE THIS:



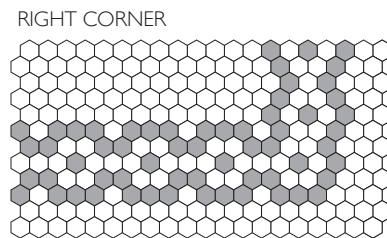
DB6503 BORDER (H) □ 77% ■ 23%



DB6503 BORDER (V) □ 89% ■ 11%



DB6503 CORNER (L) □ 75% ■ 25%



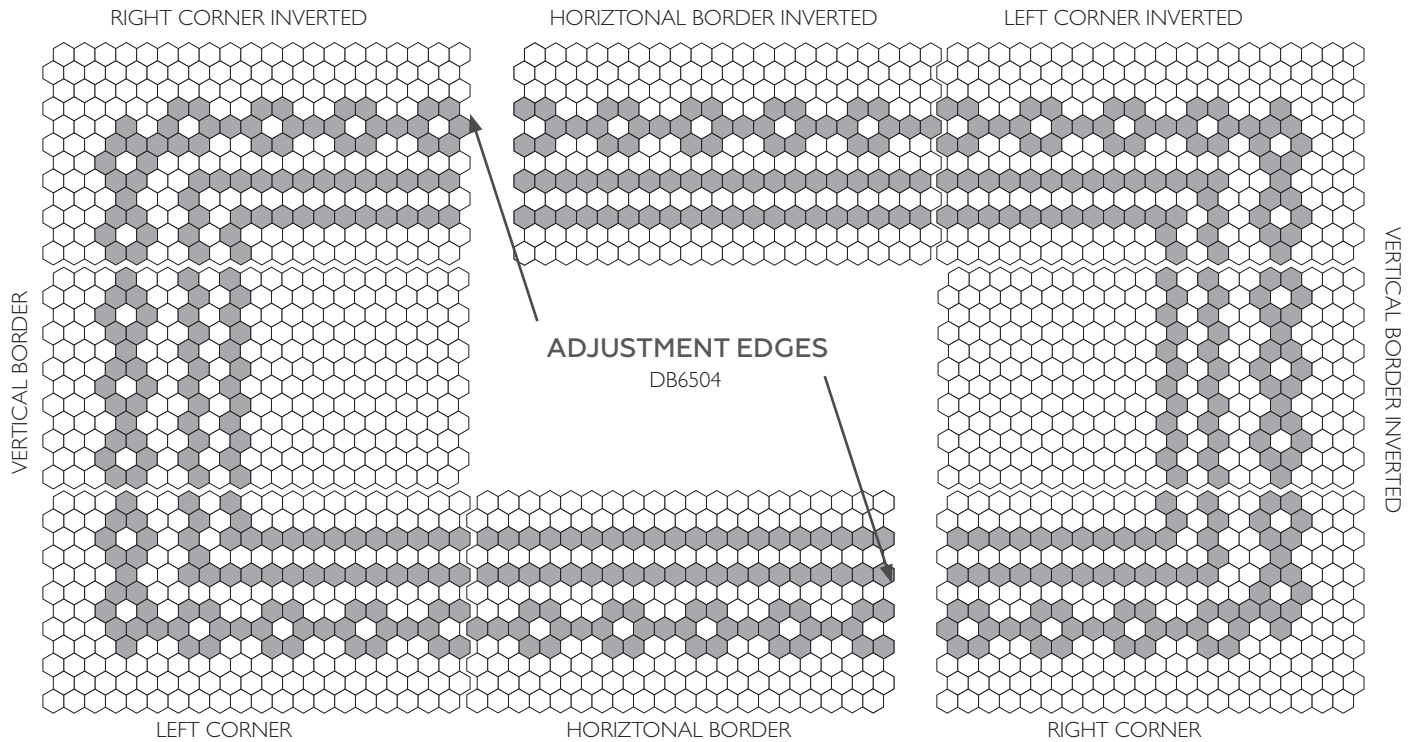
DB6503 CORNER (R) □ 75% ■ 25%



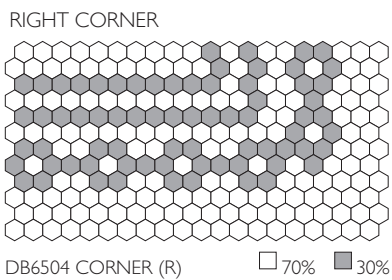
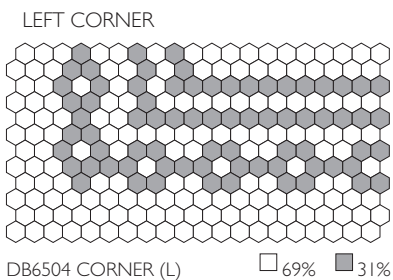
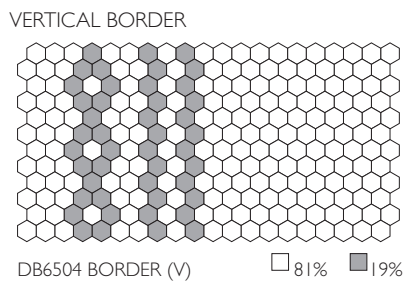
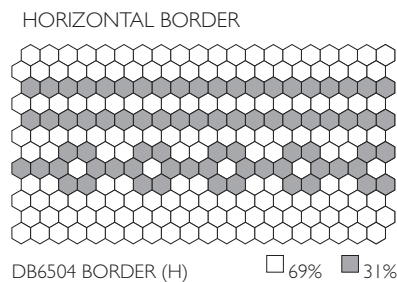
# 1 x 1 Hexagon Patterns

## BORDERS & CORNERS

If a Hexagon border is required, you must provide a plan of the area with dimensions, because the Hexagon configuration precludes interchanging sheets.



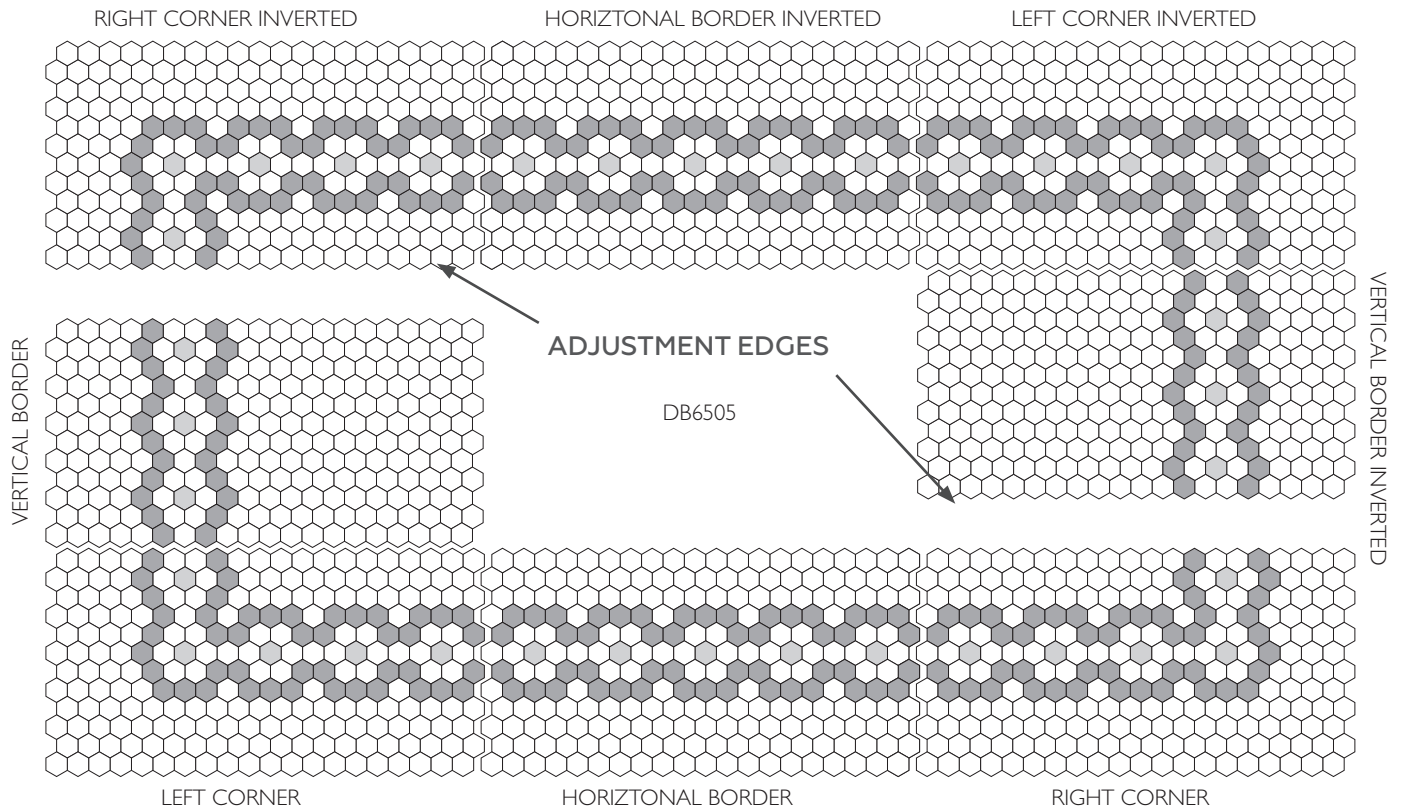
TO ALIGN PATTERN AT ADJUSTMENT EDGES, REMOVE 2 ROWS, OR ADD 2 ROWS TO LOOK LIKE THIS:



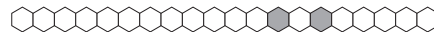
# 1 x 1 Hexagon Patterns

## BORDERS & CORNERS

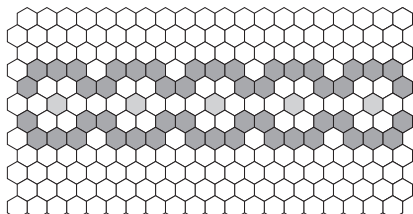
If a Hexagon border is required, you must provide a plan of the area with dimensions, because the Hexagon configuration precludes interchanging sheets.



TO ALIGN PATTERN AT ADJUSTMENT EDGES, REMOVE 3 ROWS, OR ADD 1 ROW TO LOOK LIKE THIS:

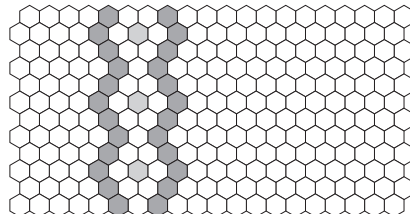


HORIZONTAL BORDER



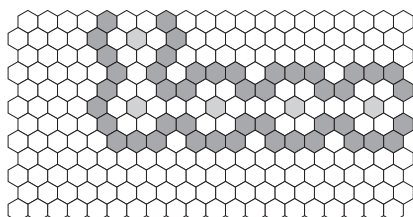
DB6505 BORDER (H) □ 77% ■ 2% ■ 21%

VERTICAL BORDER



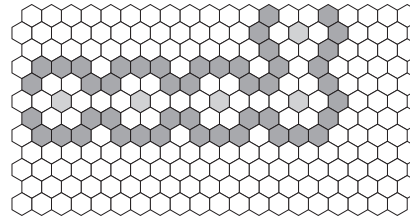
DB6505 BORDER (V) □ 89% ■ 1% ■ 10%

LEFT CORNER



DB6505 CORNER (L) □ 79% ■ 2% ■ 19%

RIGHT CORNER

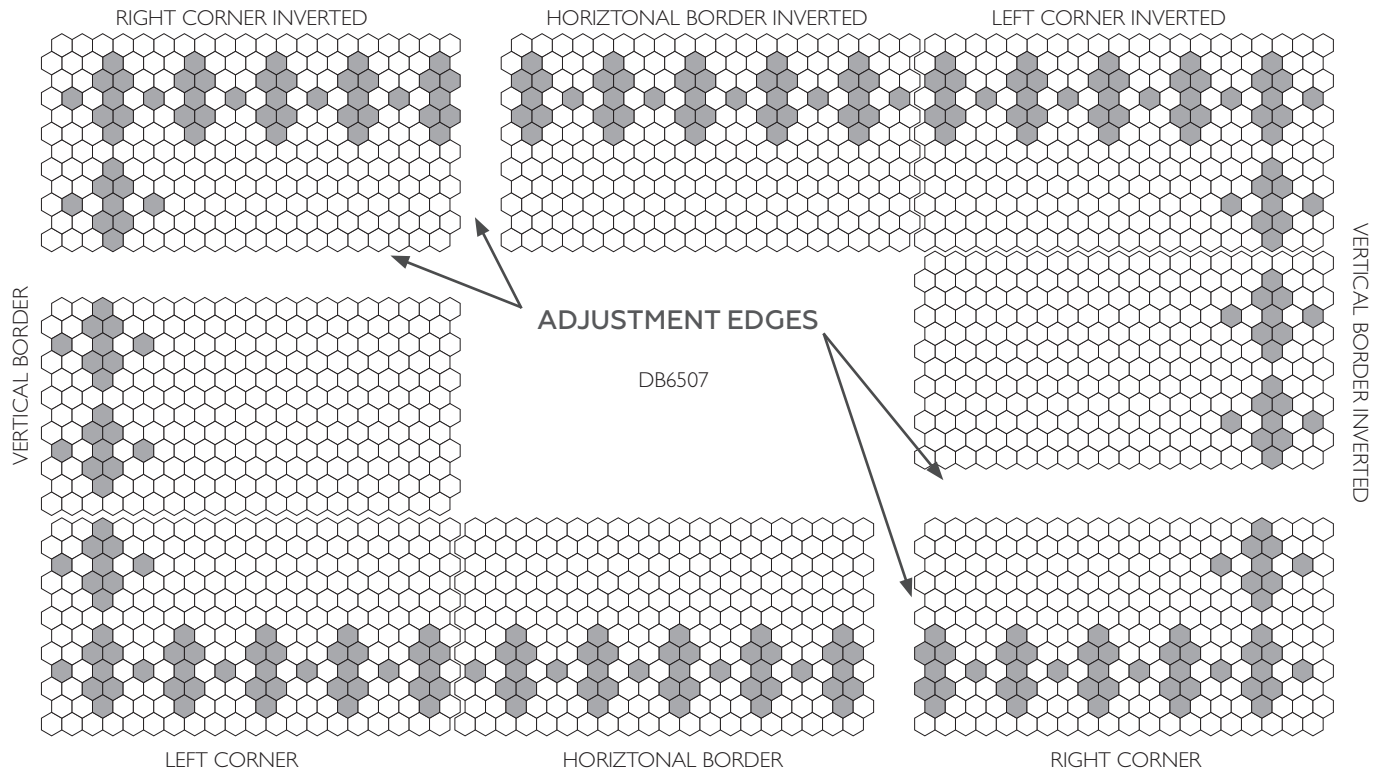


DB6505 CORNER (R) □ 79% ■ 2% ■ 19%

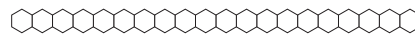
# 1 x 1 Hexagon Patterns

## BORDERS & CORNERS

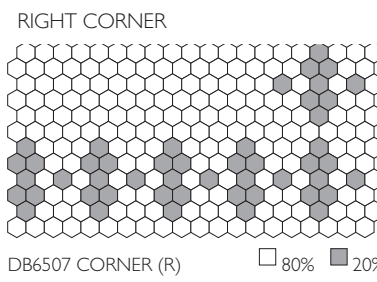
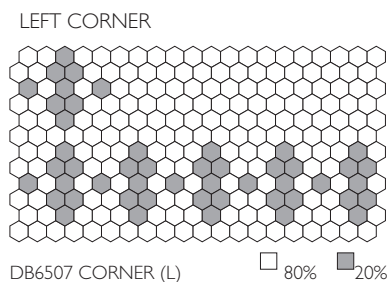
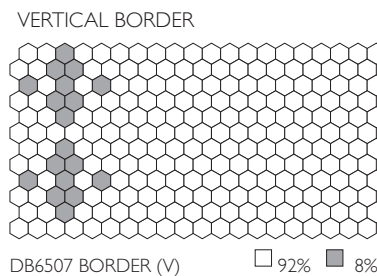
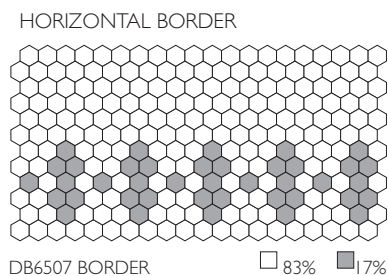
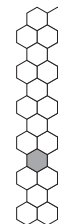
If a Hexagon border is required, you must provide a plan of the area with dimensions, because the Hexagon configuration precludes interchanging sheets.



TO ALIGN PATTERN AT VERTICAL ADJUSTMENT EDGES, REMOVE 5 ROWS, OR ADD ONE ROW TO LOOK LIKE THIS



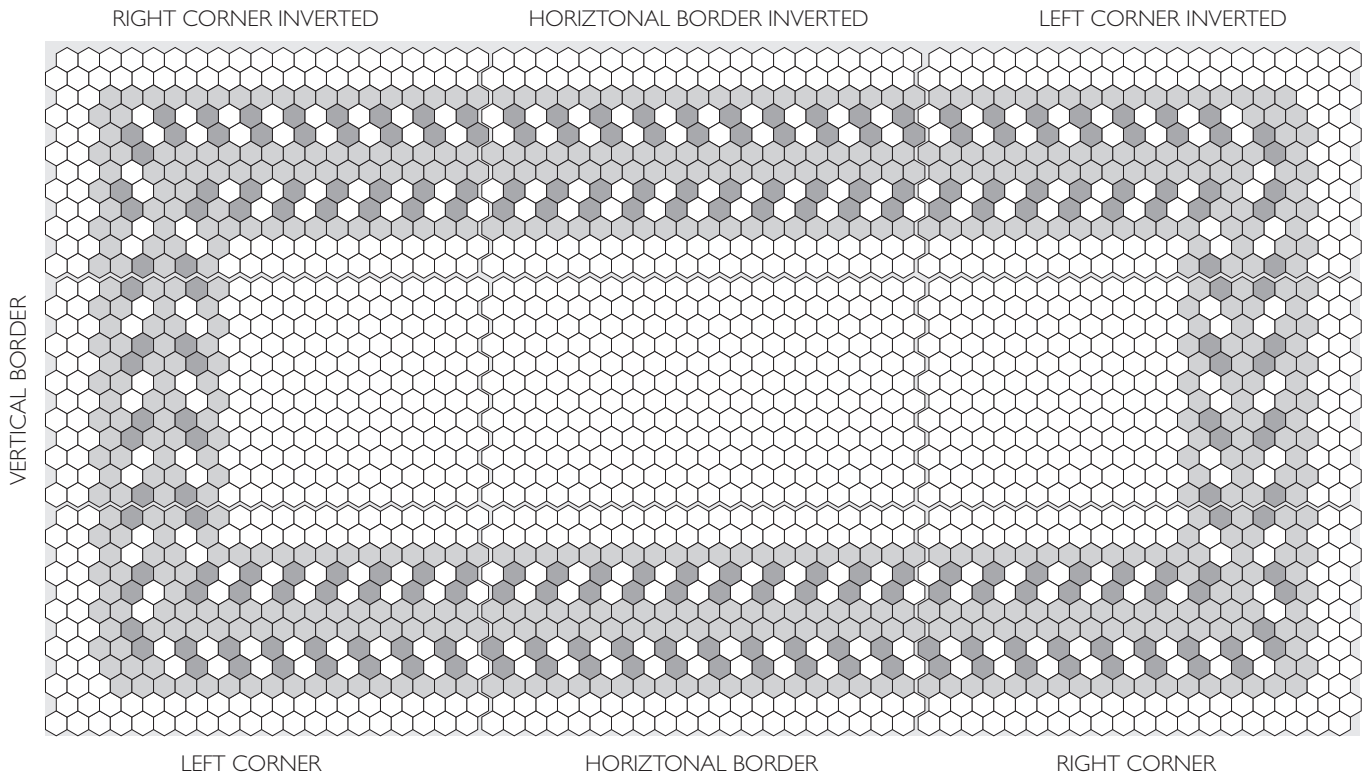
TO ALIGN PATTERN AT HORIZONTAL ADJUSTMENT EDGES, REMOVE 2 ROWS, OR ADD 2 ROWS TO LOOK LIKE THIS



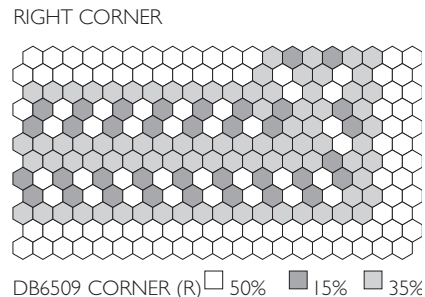
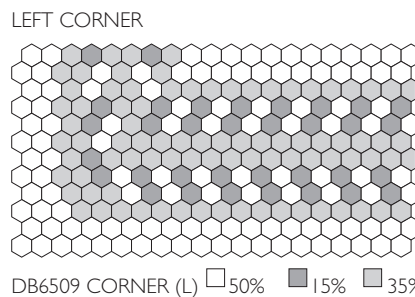
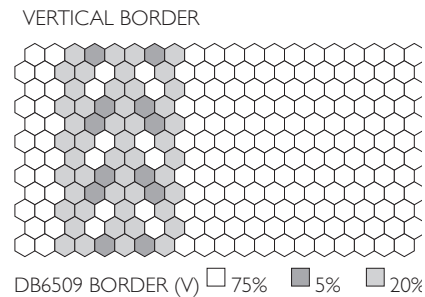
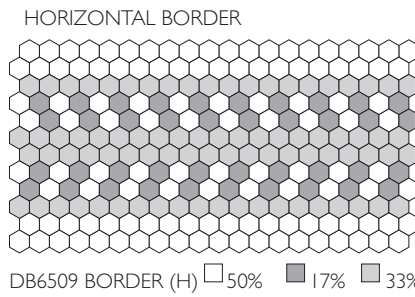
# 1 x 1 Hexagon Patterns

## BORDERS & CORNERS

If a Hexagon border is required, you must provide a plan of the area with dimensions, because the Hexagon configuration precludes interchanging sheets.



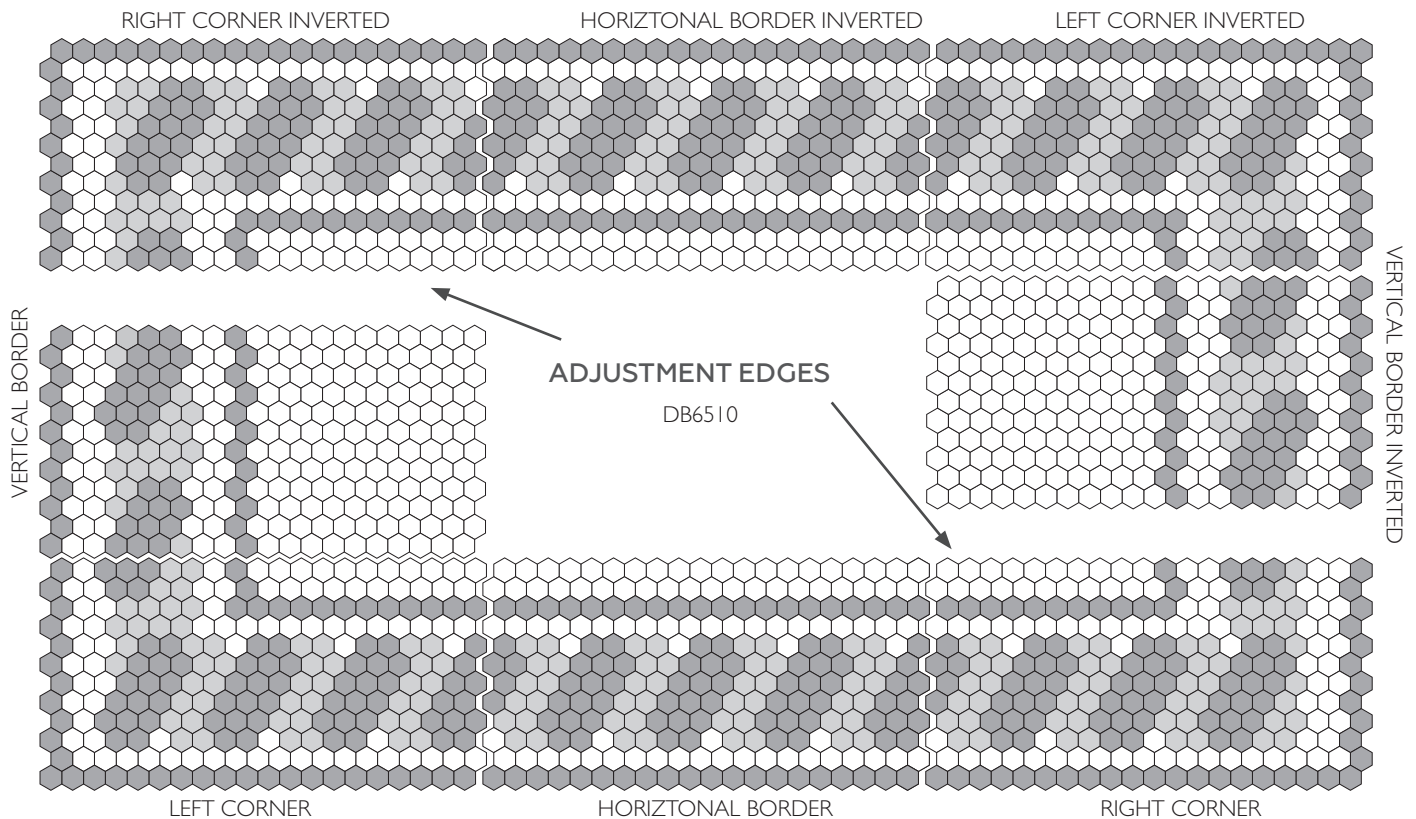
DB6509



# 1 x 1 Hexagon Patterns

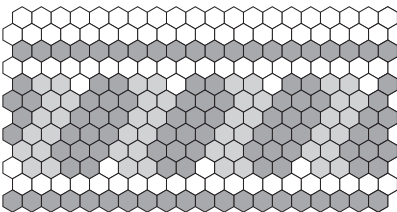
## BORDERS & CORNERS

If a Hexagon border is required, you must provide a plan of the area with dimensions, because the Hexagon configuration precludes interchanging sheets.

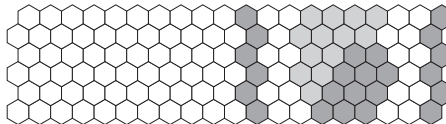


TO ALIGN PATTERN AT ADJUSTMENT EDGES, REMOVE 2 ROWS, OR ADD 6 ROWS TO LOOK LIKE THIS:

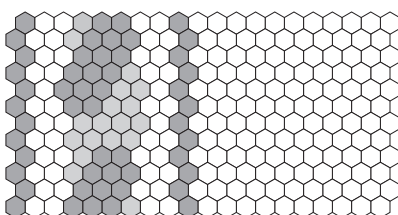
HORIZONTAL BORDER



DB6510 BORDER (H) □ 37% ■ 43% ▒ 20%

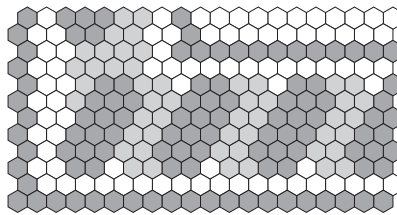


VERTICAL BORDER



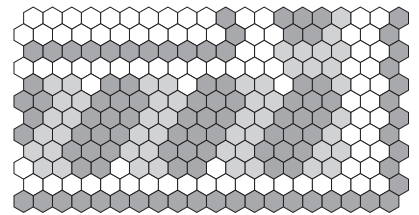
DB6510 BORDER (V) □ 72% ■ 21% ▒ 7%

LEFT CORNER



DB6510 CORNER (L) □ 38% ■ 42% ▒ 20%

RIGHT CORNER

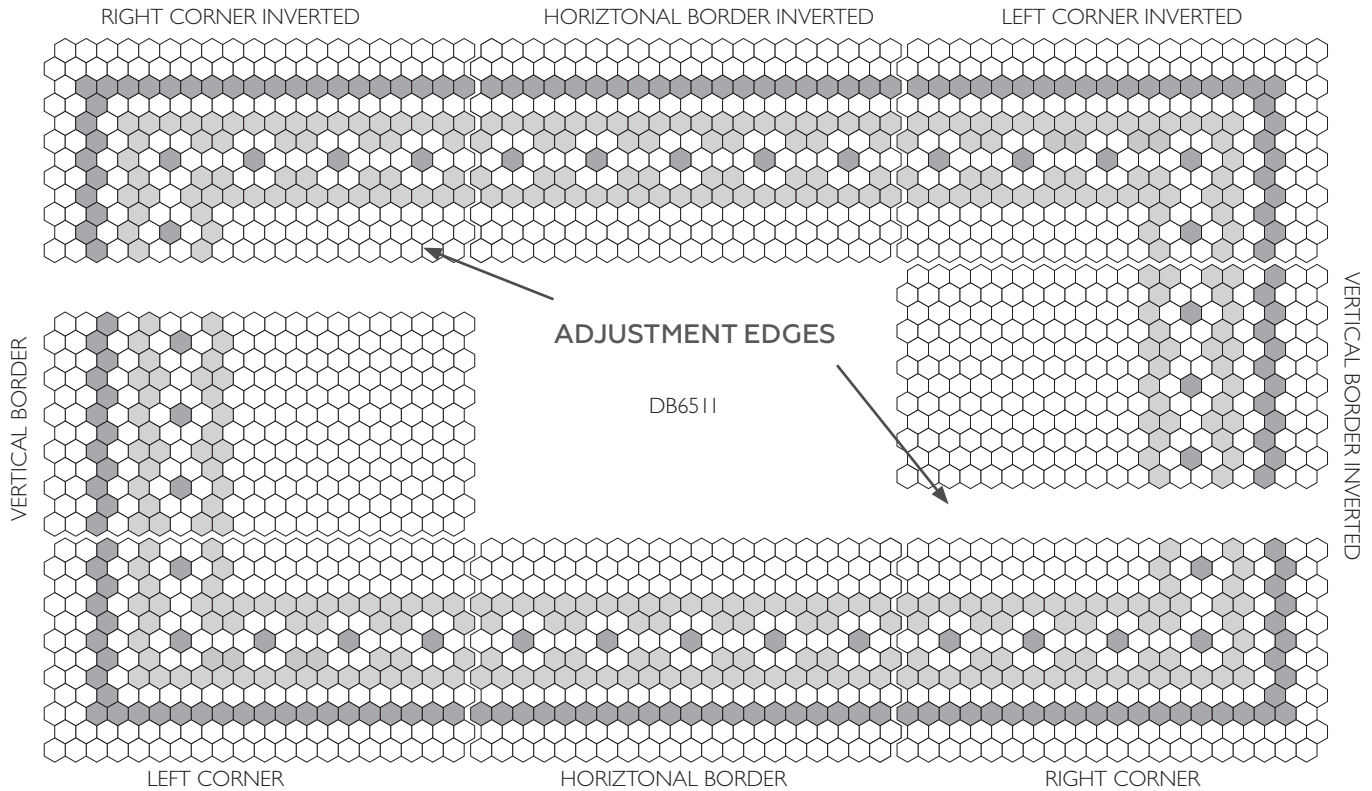


DB6510 CORNER (R) □ 36% ■ 42% ▒ 22%

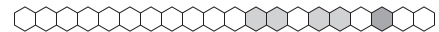
# 1 x 1 Hexagon Patterns

## BORDERS & CORNERS

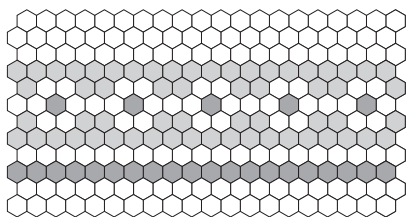
If a Hexagon border is required, you must provide a plan of the area with dimensions, because the Hexagon configuration precludes interchanging sheets.



TO ALIGN PATTERN AT ADJUSTMENT EDGES, EITHER REMOVE 3 ROWS OF TILE AT ADJUSTMENT EDGES,  
 OR MANUALLY ADD 1 ROW LIKE THIS:

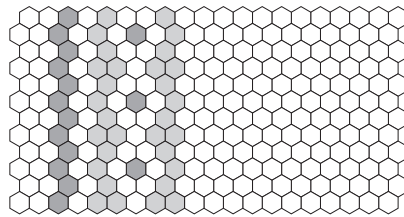


HORIZONTAL BORDER



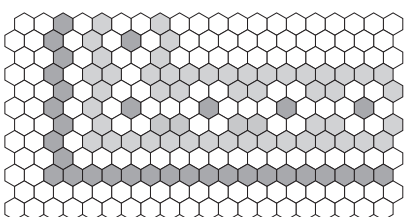
DB6511 BORDER (H) □ 65% ■ 10% ▣ 25%

VERTICAL BORDER



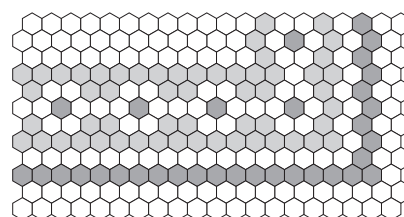
DB6511 BORDER (V) □ 80% ■ 6% ▣ 14%

LEFT CORNER



DB6511 CORNER (L) □ 63% ■ 13% ▣ 24%

RIGHT CORNER

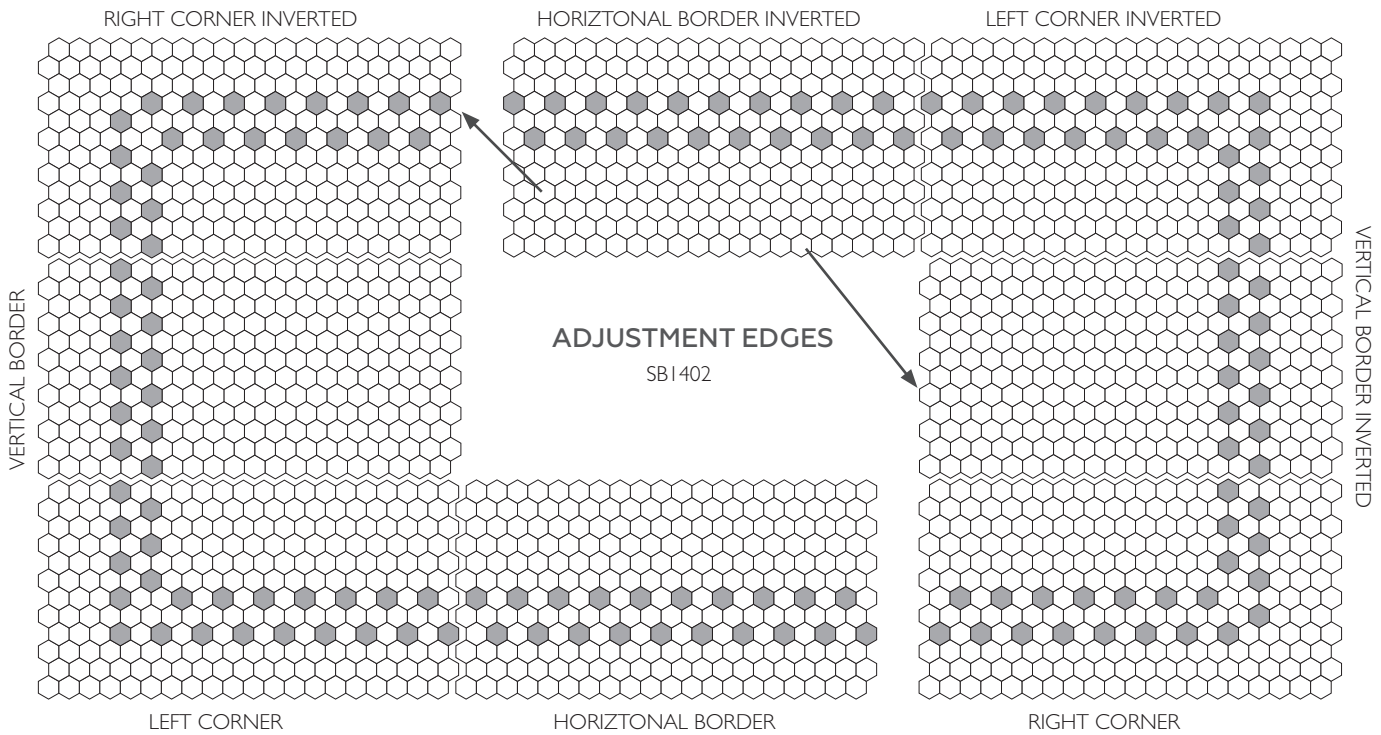


DB6511 CORNER (R) □ 63% ■ 13% ▣ 24%

# 1 x 1 Hexagon Patterns

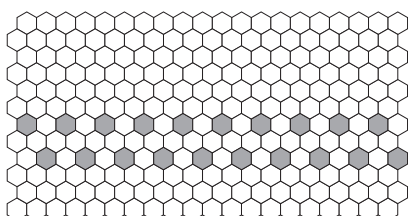
## BORDERS & CORNERS

If a Hexagon border is required, you must provide a plan of the area with dimensions, because the Hexagon configuration precludes interchanging sheets.



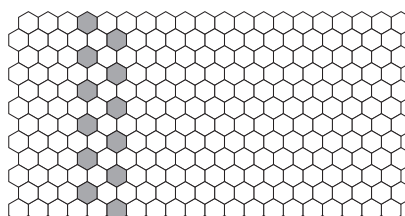
TO ALIGN PATTERN AT ADJUSTMENT EDGES, REMOVE 1 ROW, OR ADD 1 ROW TO LOOK LIKE THIS:

HORIZONTAL BORDER



SB1402 BORDER (H) □ 92% ■ 8%

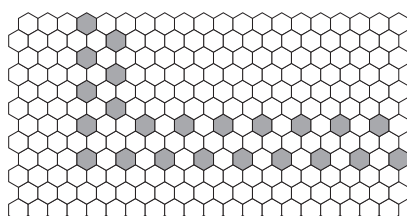
VERTICAL BORDER



SB1402 BORDER (V) □ 95% ■ 5%

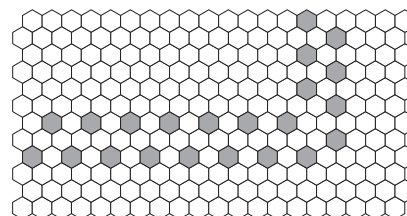


LEFT CORNER



SB1402 CORNER (L) □ 90% ■ 10%

RIGHT CORNER

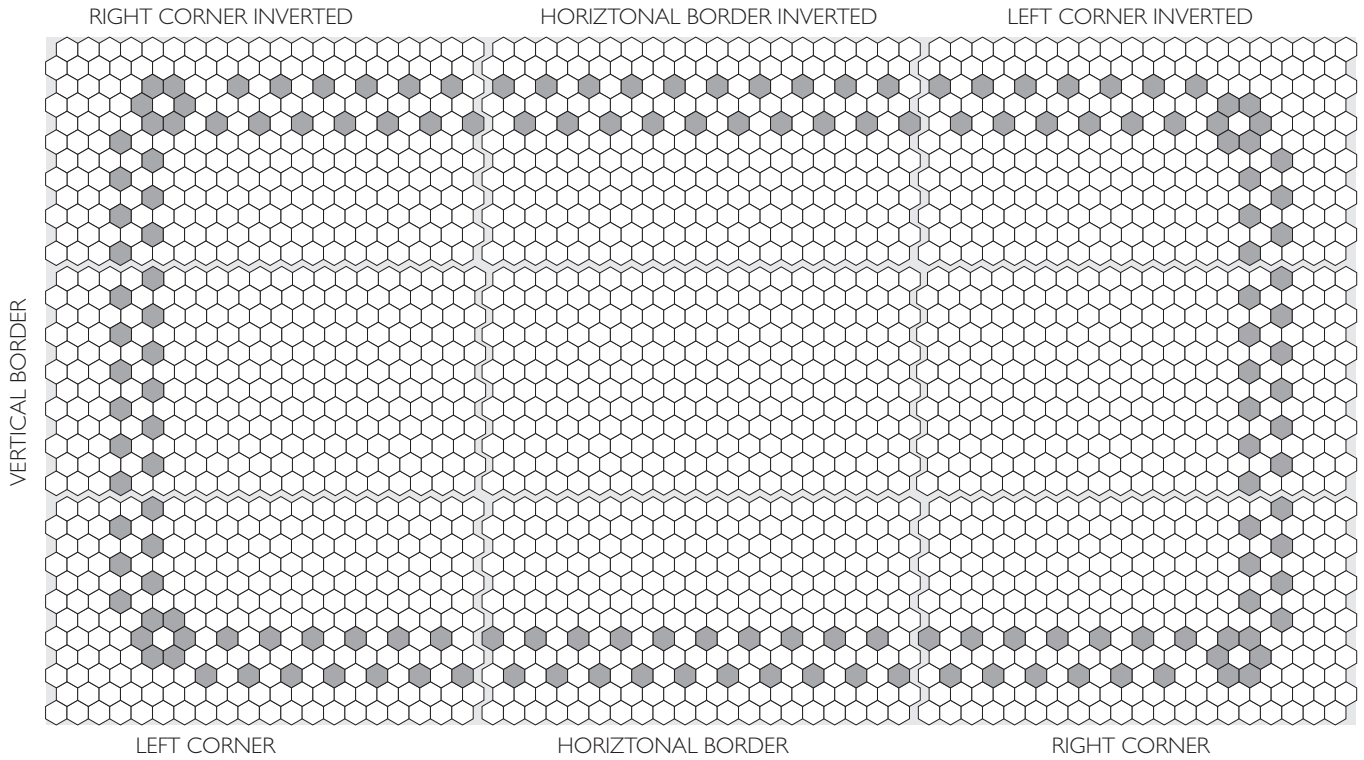


SB1402 CORNER (R) □ 90% ■ 10%

# 1 x 1 Hexagon Patterns

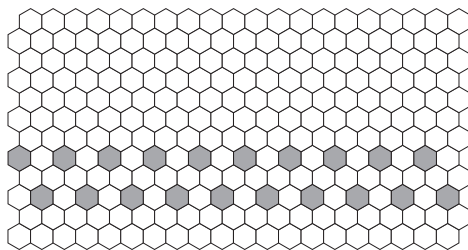
## BORDERS & CORNERS

If a Hexagon border is required, you must provide a plan of the area with dimensions, because the Hexagon configuration precludes interchanging sheets.



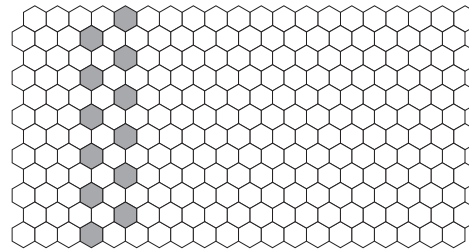
SB1402B

HORIZONTAL BORDER



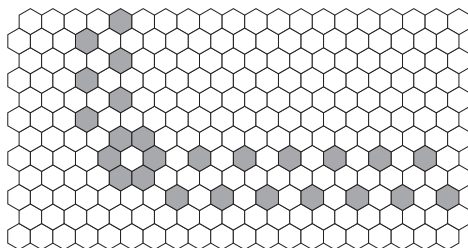
SB1402B BORDERB (H)    □ 92%    ■ 8%

VERTICAL BORDER



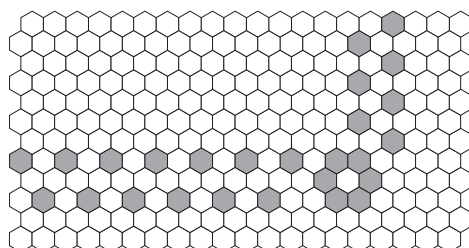
SB1402B BORDER (V)    □ 95%    ■ 5%

LEFT CORNER



SB1402B CORNER (L)    □ 90%    ■ 10%

RIGHT CORNER



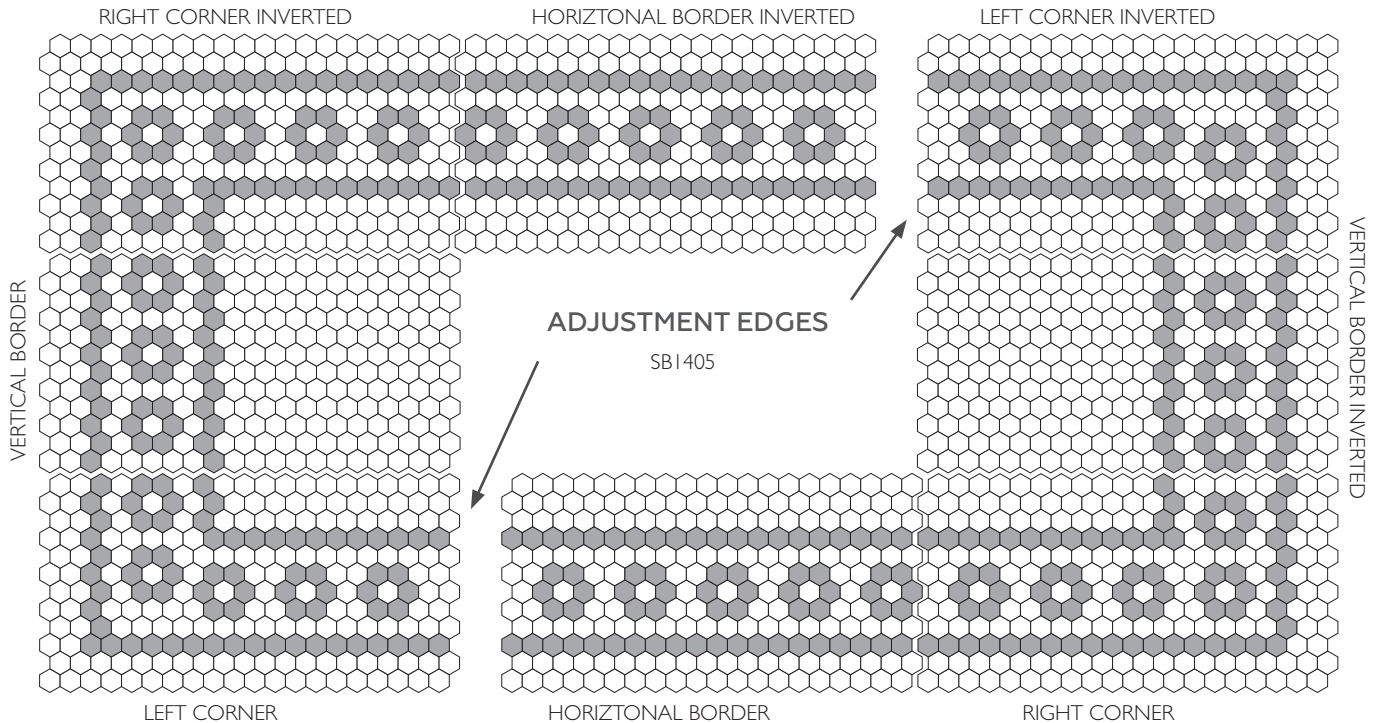
SB1402B CORNER (R)    □ 89%    ■ 11%



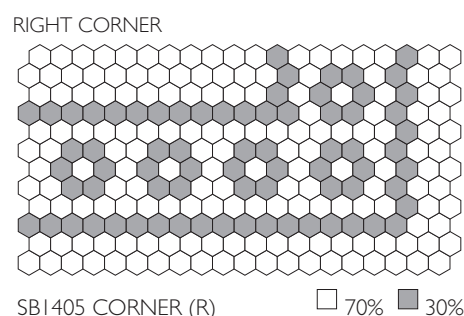
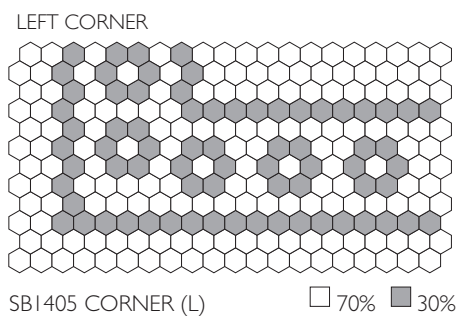
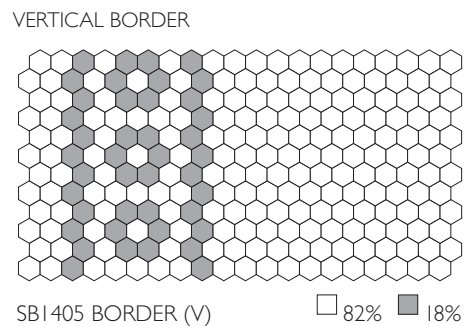
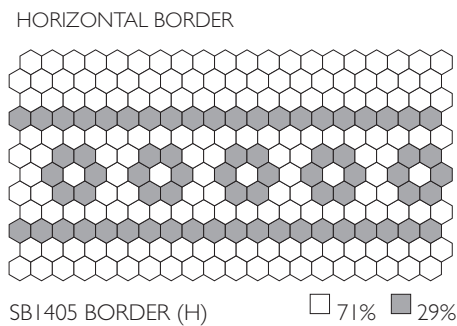
# 1 x 1 Hexagon Patterns

## BORDERS & CORNERS

If a Hexagon border is required, you must provide a plan of the area with dimensions, because the Hexagon configuration precludes interchanging sheets.



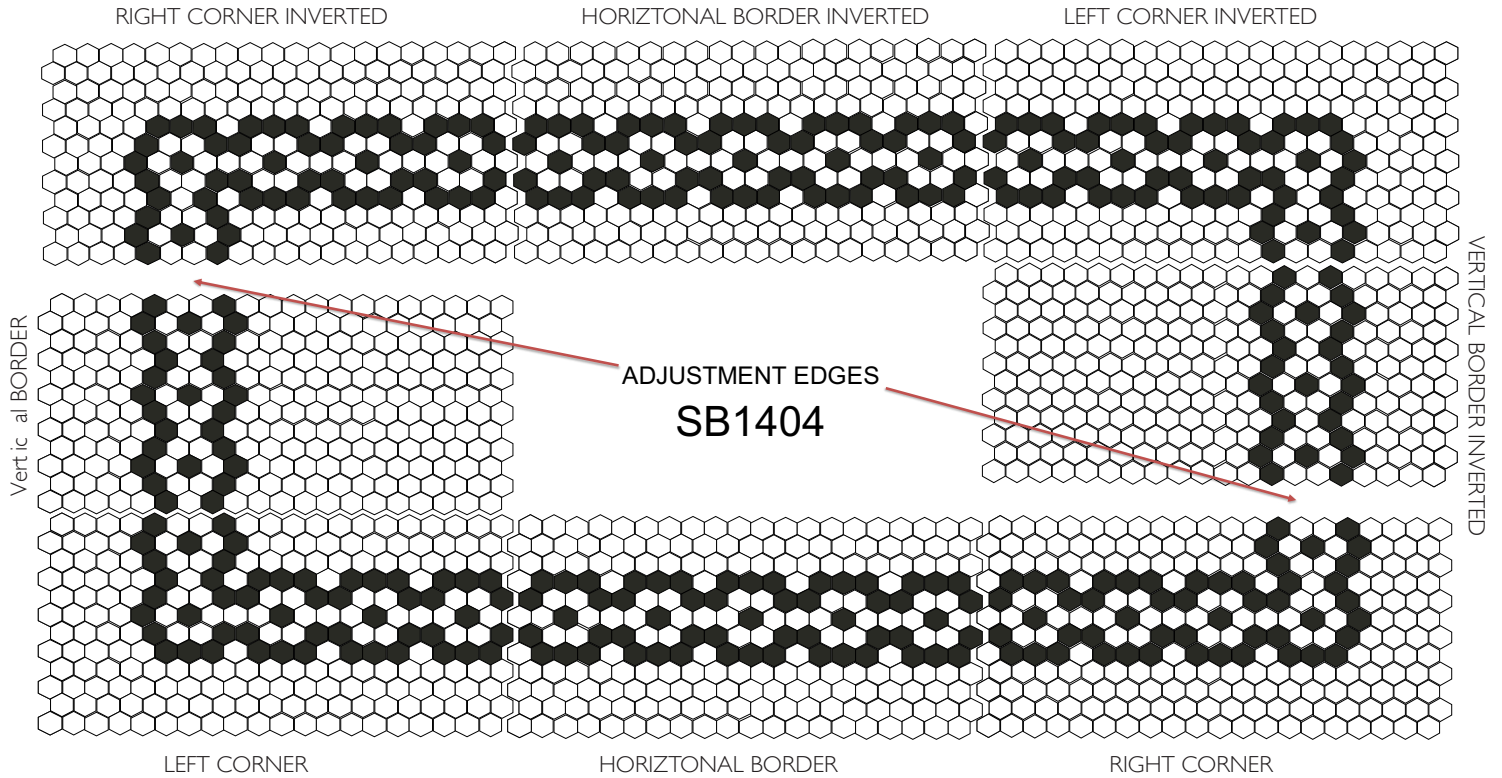
TO ALIGN PATTERN AT ADJUSTMENT EDGES, REMOVE 2 ROWS



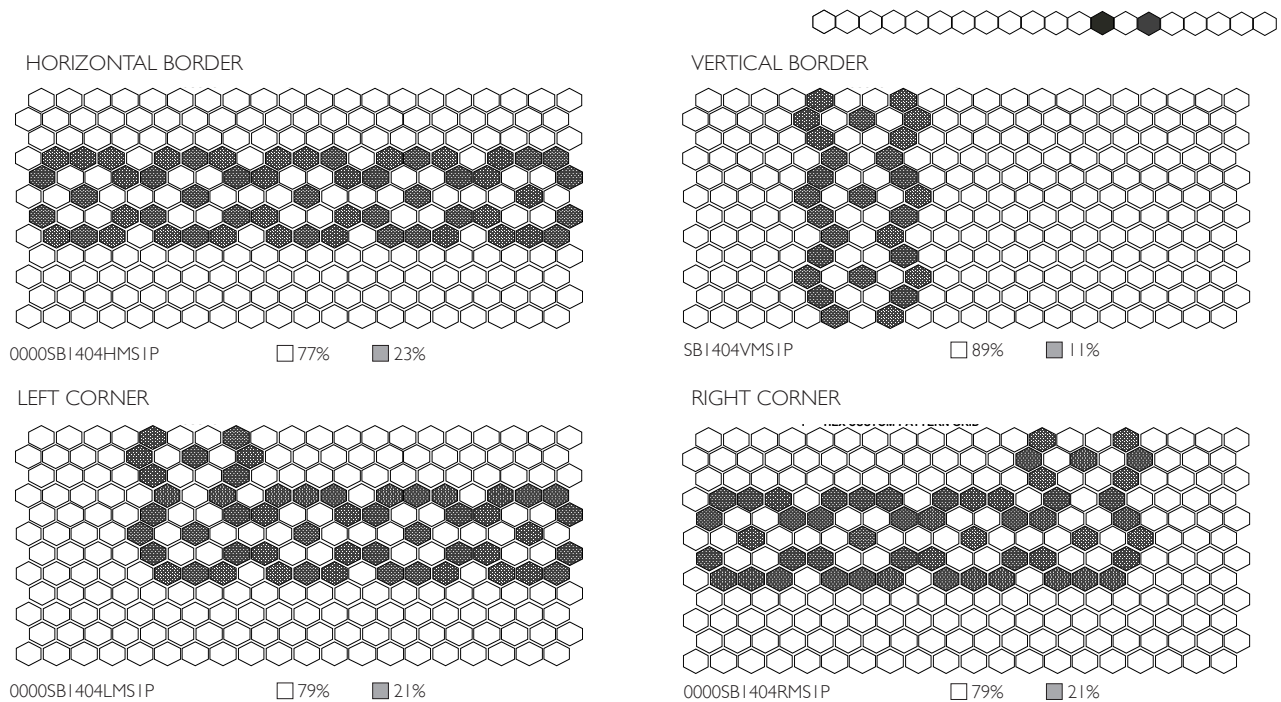
# 1 x 1 Hexagon Patterns

## BORDERS & CORNERS

If a Hexagon border is required, you must provide a plan of the area with dimensions, because the Hexagon configuration precludes interchanging sheets.

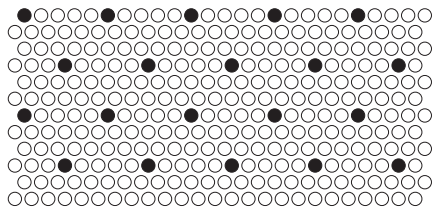


TO ALIGN PATTERN AT ADJUSTMENT EDGES, REMOVE 3 ROWS, OR ADD 1 ROW TO LOOK LIKE THIS:

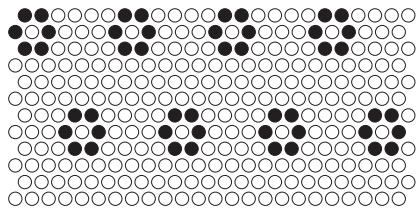


# 1 x 1 Penny Round Patterns

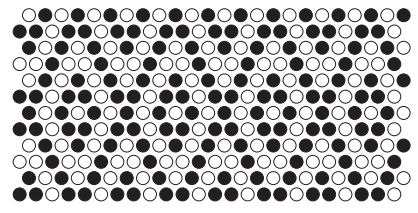
## STANDARD PATTERNS



PENNY RETRO DOT ○ 93% ● 7%



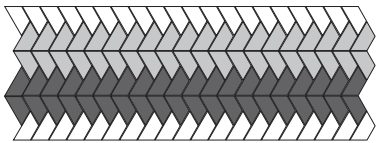
ROSETTE ○ 83% ● 17%



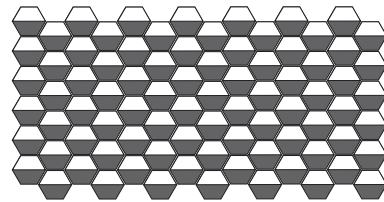
PENNY DIAMOND ○ 47% ● 53%

# 1 x 2 Half Hex Patterns

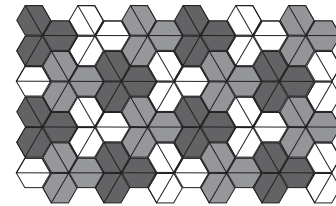
## STANDARD PATTERNS



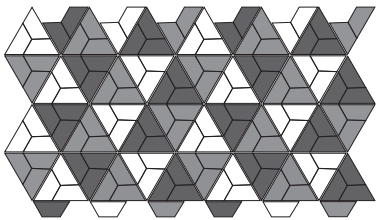
MIRAGE WEAVE ▲ 34% ▲ 33% ▲ 33%



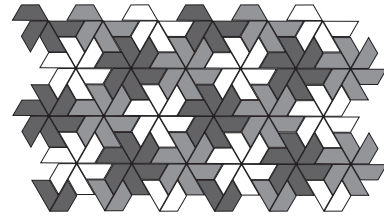
BALANCED HEX ▲ 50% ▲ 50%



SHAMROCK HALF HEX ▲ 34% ▲ 33% ▲ 33%



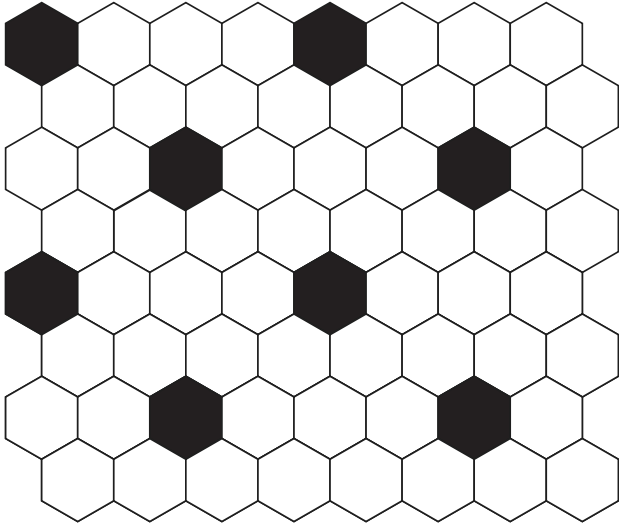
TRINITY HALF HEX ▲ 34% ▲ 33% ▲ 33%



PINWHEEL HALF HEX ▲ 34% ▲ 33% ▲ 33%

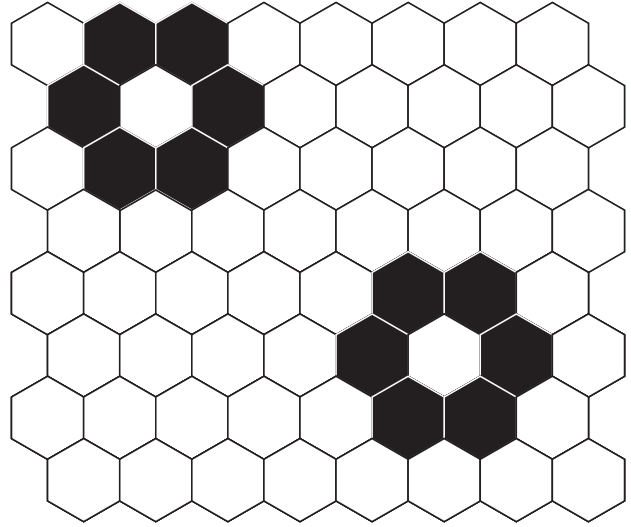
# 1-1/2 Hex Patterns

## STANDARD PATTERNS



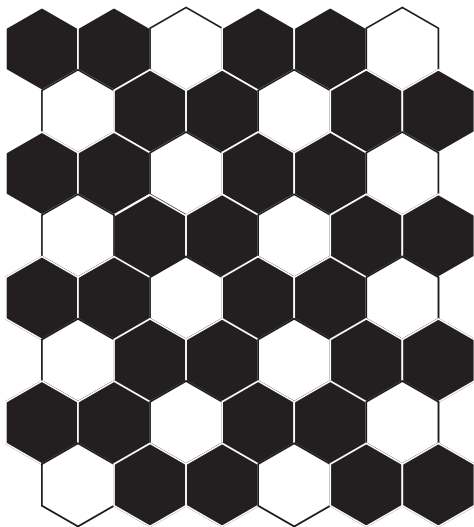
15HEX DOT

○ 87% ● 13%



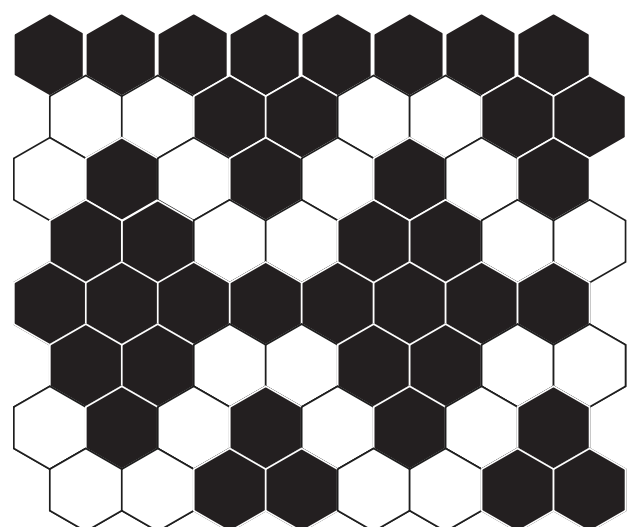
15HEX ROSETTE

○ 82% ● 18%



15HEX FLOWER

○ 33% ● 67%



15HEX RHOMBUS

○ 38% ● 62%

# How To Order

## MOSAIC BORDERS AND PATTERNS

### STANDARD PATTERNS

- 1 Determine the four-digit pattern number.  
(Indicated at the bottom left corner of each pattern)
- 2 Select colors and determine corresponding percentages from the legend/key.
- 3 Determine the square footage required for field patterns and for border patterns.  
(corner configurations will be manufactured by request or may be assembled at the installation site.)
- 4 Mail, fax, or email your request to your local Daltile representative.
- 5 Once your request is processed, your order is entered, and you will be notified of a shipping date.

#### Lead Time

- Pricing: 24 hours
- Color Renderings (upon request): 1 week
- Production: 4-6 weeks

Times may vary depending on the size and complexity of the design. Typically, the manufacturing lead time for custom designs is longer than that of standard designs.

#### Mounting information

Pre-mounted sheets of tile speed up and simplify installation. They are self-spacing and bridge surface irregularities. Factory pre-mounted sheets are assembled together in two different ways:

##### Dot-Mount (standard)

Tiles are dot-mounted into 12" x 24" sheets, using a heat cured poly-vinyl chloride adhesive, which is both acid and alkaline resistant. Hex tile is bonded into 12 tile x 20 tile sheets.

##### ClearFace (special order in 1" x 1" and 2" x 2" size only)

Tiles are mounted on a removable clear film-mount sheet bonded to the tile face.

#### Important reminders

Use hexagon borders with hexagon field tile. Also, use a "floor plan" to avoid misinterpretations. Because of the unique shape of hexagon tiles, you'll notice a certain degree of inconsistency from one section of the pattern to another. Therefore, both a vertical and horizontal borders, right and left corners must be designed. The "floor plan" illustrates which direction the points face, which is especially helpful for corner configurations.

### CUSTOM PATTERNS

- 1 Determine a budget.
- 2 Determine size of area, tile size/type and colors.  
(Use custom pattern design worksheet on page 28 - 35.)
- 3 Develop a color rendering of request  
(scan ready).
- 4 Mail, fax, or email your request to your local Daltile representative.
- 5 Once your request is processed, your order is entered and a sketch with an order acceptance form is returned for your approval. Please note any discrepancies and notify Daltile immediately.

# Order Form

The grids below represent a single standard sized sheet. The following grids are for working with modifications of standard tile patterns or original tile patterns. Single sheet repeat patterns offer the biggest savings from both a manufacturing and installation standpoint.

Specify color choices by clearly detailing all placements in the grid using an appropriate code to represent the desired pattern. (For example, color #1 = X, color #2 = +, color #3 = O, etc.)

Please photocopy this form and use it to submit custom patterns. All orders or questions may be submitted to your local Daltile representative.

### 1 x 1 PATTERN


STORE \_\_\_\_\_

CUSTOMER NAME \_\_\_\_\_

DATE \_\_\_\_\_

### PATTERN CODING

- \_\_\_\_\_ COLOR \_\_\_\_\_%
- \_\_\_\_\_ COLOR \_\_\_\_\_%
- \_\_\_\_\_ COLOR \_\_\_\_\_%
- \_\_\_\_\_ COLOR \_\_\_\_\_%
- \_\_\_\_\_ COLOR \_\_\_\_\_%
- \_\_\_\_\_ COLOR \_\_\_\_\_%
- \_\_\_\_\_ COLOR \_\_\_\_\_%
- \_\_\_\_\_ COLOR \_\_\_\_\_%

### 2 x 2 PATTERN


NOTES  
\_\_\_\_\_  
\_\_\_\_\_  
\_\_\_\_\_  
\_\_\_\_\_  
\_\_\_\_\_  
\_\_\_\_\_  
\_\_\_\_\_  
\_\_\_\_\_

## Order Form

The grids below represent a single standard sized sheet. The following grids are for working with modifications of standard tile patterns or original tile patterns. Single sheet repeat patterns offer the biggest savings from both a manufacturing and installation standpoint.

Specify color choices by clearly detailing all placements in the grid using an appropriate code to represent the desired pattern. (For example, color #1 = X, color #2 = +, color #3 = O, etc.)

Please photocopy this form and use it to submit custom patterns. All orders or questions may be submitted to your local Daltile representative.

### 2 x 4 PATTERNS



STORE \_\_\_\_\_

CUSTOMER NAME \_\_\_\_\_

DATE \_\_\_\_\_

### PATTERN CODING

\_\_\_\_\_ COLOR \_\_\_\_\_%

\_\_\_\_\_ COLOR \_\_\_\_\_%

\_\_\_\_\_ COLOR \_\_\_\_\_%

\_\_\_\_\_ COLOR \_\_\_\_\_%

\_\_\_\_\_ COLOR \_\_\_\_\_%

\_\_\_\_\_ COLOR \_\_\_\_\_%

\_\_\_\_\_ COLOR \_\_\_\_\_%

\_\_\_\_\_ COLOR \_\_\_\_\_%

### NOTES

---

---

---

---

---

---

---

---

---

---

---

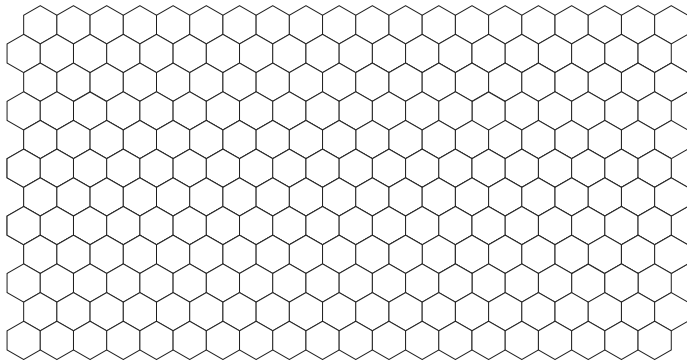
# Order Form

The grids below represent a single standard sized sheet. The following grids are for working with modifications of standard tile patterns or original tile patterns. Single sheet repeat patterns offer the biggest savings from both a manufacturing and installation standpoint.

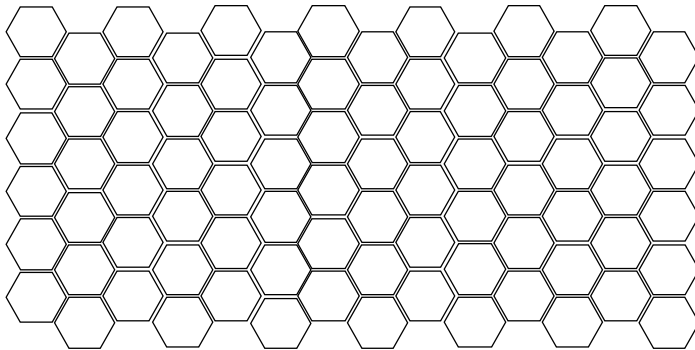
Specify color choices by clearly detailing all placements in the grid using an appropriate code to represent the desired pattern. (For example, color #1 = X, color #2 = +, color #3 = O, etc.)

Please photocopy this form and use it to submit custom patterns. All orders or questions may be submitted to your local Daltile representative.

## 1 x 1 HEXAGON PATTERN



## 2 x 2 HEXAGON PATTERN



STORE \_\_\_\_\_

CUSTOMER NAME \_\_\_\_\_

DATE \_\_\_\_\_

### PATTERN CODING

\_\_\_\_\_ COLOR \_\_\_\_\_%

\_\_\_\_\_ COLOR \_\_\_\_\_%

\_\_\_\_\_ COLOR \_\_\_\_\_%

\_\_\_\_\_ COLOR \_\_\_\_\_%

\_\_\_\_\_ COLOR \_\_\_\_\_%

\_\_\_\_\_ COLOR \_\_\_\_\_%

\_\_\_\_\_ COLOR \_\_\_\_\_%

\_\_\_\_\_ COLOR \_\_\_\_\_%

### NOTES

---



---



---



---



---



---



---



---





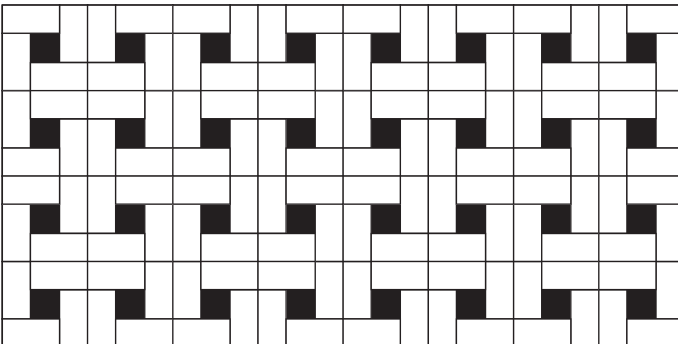
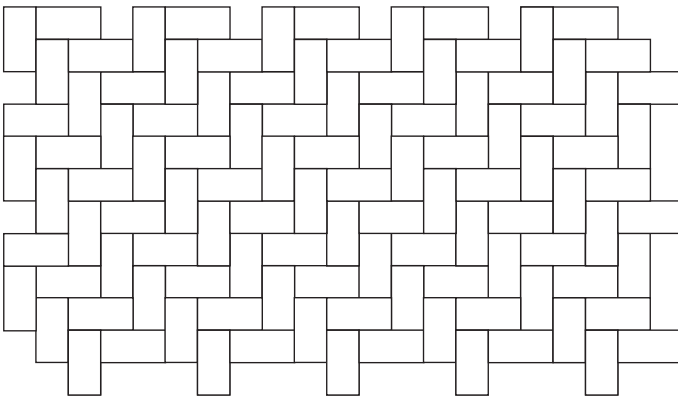
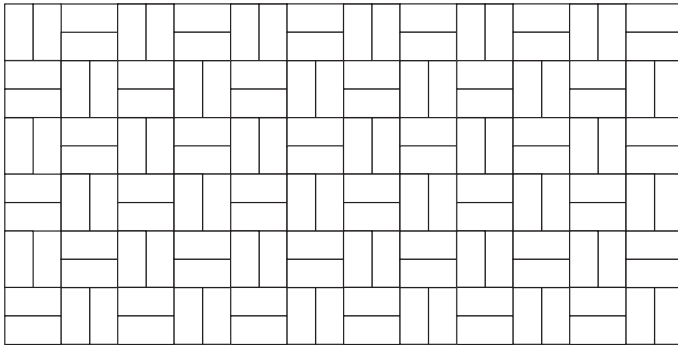
# Order Form

The grids below represent a single standard sized sheet. The following grids are for working with modifications of standard tile patterns or original tile patterns. Single sheet repeat patterns offer the biggest savings from both a manufacturing and installation standpoint.

Specify color choices by clearly detailing all placements in the grid using an appropriate code to represent the desired pattern. (For example, color #1 = X, color #2 = +, color #3 = O, etc.)

Please photocopy this form and use it to submit custom patterns. All orders or questions may be submitted to your local Daltile representative.

## 2 x 1 PATTERNS



BASKETWEAVE 2 X 1 / 1 X 1  89%  11%

STORE \_\_\_\_\_

CUSTOMER NAME \_\_\_\_\_

DATE \_\_\_\_\_

### PATTERN CODING

- \_\_\_\_\_ COLOR \_\_\_\_\_%
- \_\_\_\_\_ COLOR \_\_\_\_\_%
- \_\_\_\_\_ COLOR \_\_\_\_\_%
- \_\_\_\_\_ COLOR \_\_\_\_\_%
- \_\_\_\_\_ COLOR \_\_\_\_\_%
- \_\_\_\_\_ COLOR \_\_\_\_\_%
- \_\_\_\_\_ COLOR \_\_\_\_\_%
- \_\_\_\_\_ COLOR \_\_\_\_\_%

### NOTES

---

---

---

---

---

---

---

---

---

---

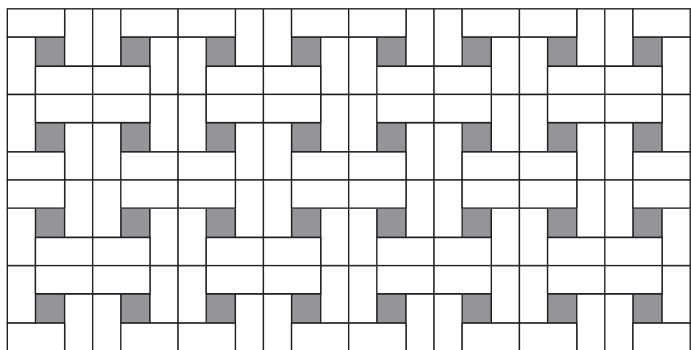
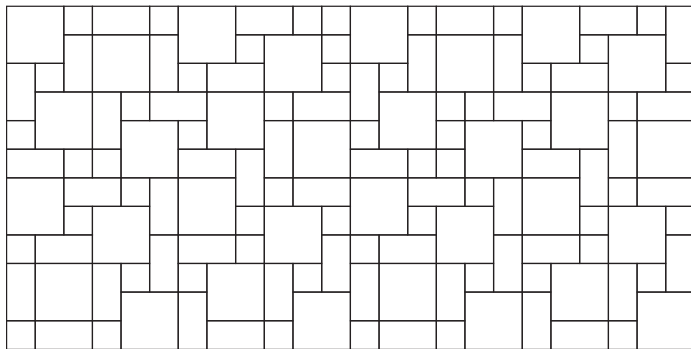
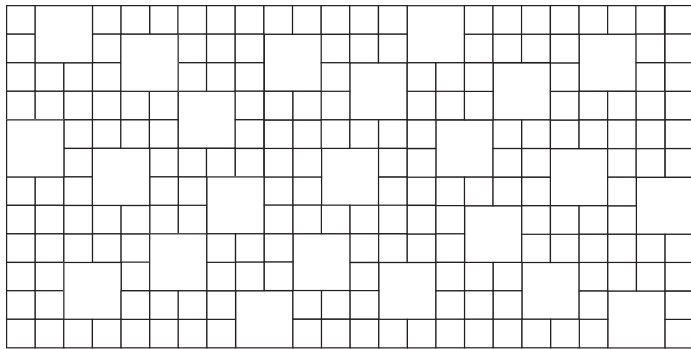
# Order Form

The grids below represent a single standard sized sheet. The following grids are for working with modifications of standard tile patterns or original tile patterns. Single sheet repeat patterns offer the biggest savings from both a manufacturing and installation standpoint.

Specify color choices by clearly detailing all placements in the grid using an appropriate code to represent the desired pattern. (For example, color #1 = X, color #2 = +, color #3 = O, etc.)

Please photocopy this form and use it to submit custom patterns. All orders or questions may be submitted to your local Daltille representative.

## COMBINATION PATTERNS



STORE \_\_\_\_\_

CUSTOMER NAME \_\_\_\_\_

DATE \_\_\_\_\_

PATTERN CODING \_\_\_\_\_

\_\_\_\_\_ COLOR \_\_\_\_\_ %

\_\_\_\_\_ COLOR \_\_\_\_\_ %

\_\_\_\_\_ COLOR \_\_\_\_\_ %

\_\_\_\_\_ COLOR \_\_\_\_\_ %

\_\_\_\_\_ COLOR \_\_\_\_\_ %

\_\_\_\_\_ COLOR \_\_\_\_\_ %

\_\_\_\_\_ COLOR \_\_\_\_\_ %

\_\_\_\_\_ COLOR \_\_\_\_\_ %

NOTES

\_\_\_\_\_  
\_\_\_\_\_  
\_\_\_\_\_  
\_\_\_\_\_  
\_\_\_\_\_  
\_\_\_\_\_  
\_\_\_\_\_

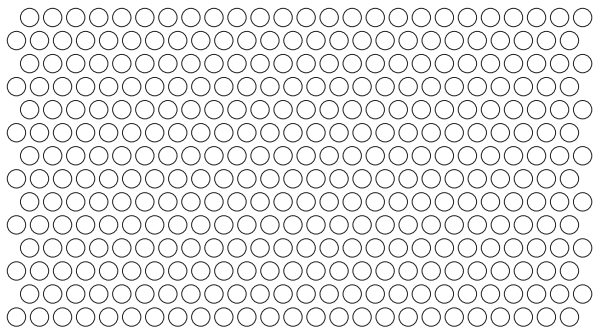
# Order Form

The grids below represent a single standard sized sheet. The following grids are for working with modifications of standard tile patterns or original tile patterns. Single sheet repeat patterns offer the biggest savings from both a manufacturing and installation standpoint.

Specify color choices by clearly detailing all placements in the grid using an appropriate code to represent the desired pattern. (For example, color #1 = X, color #2 = +, color #3 = O, etc.)

Please photocopy this form and use it to submit custom patterns. All orders or questions may be submitted to your local Daltile representative.

## PENNY ROUND PATTERNS



STORE \_\_\_\_\_

CUSTOMER NAME \_\_\_\_\_

DATE \_\_\_\_\_

### PATTERN CODING

- \_\_\_\_\_ COLOR \_\_\_\_\_ %
- \_\_\_\_\_ COLOR \_\_\_\_\_ %
- \_\_\_\_\_ COLOR \_\_\_\_\_ %
- \_\_\_\_\_ COLOR \_\_\_\_\_ %
- \_\_\_\_\_ COLOR \_\_\_\_\_ %
- \_\_\_\_\_ COLOR \_\_\_\_\_ %
- \_\_\_\_\_ COLOR \_\_\_\_\_ %
- \_\_\_\_\_ COLOR \_\_\_\_\_ %

### NOTES

---

---

---

---

---

---

---

---

---

---

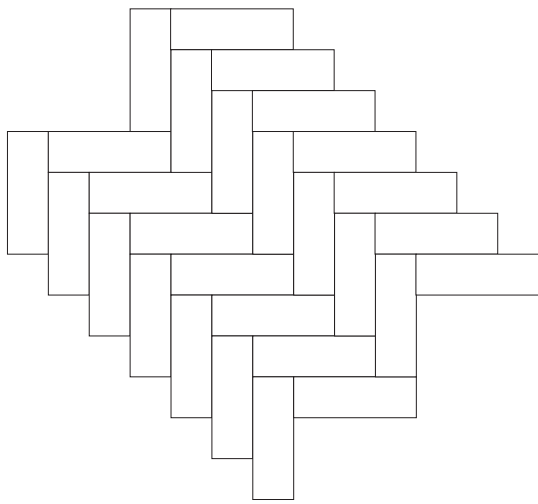
## Order Form

The grids below represent a single standard sized sheet. The following grids are for working with modifications of standard tile patterns or original tile patterns. Single sheet repeat patterns offer the biggest savings from both a manufacturing and installation standpoint.

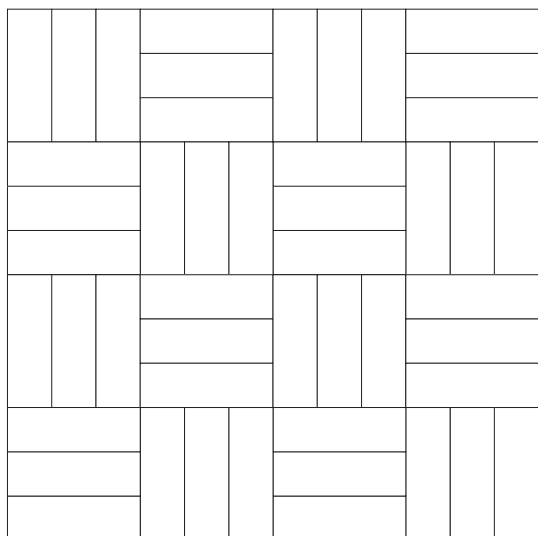
Specify color choices by clearly detailing all placements in the grid using an appropriate code to represent the desired pattern. (For example, color #1 = X, color #2 = +, color #3 = O, etc.)

Please photocopy this form and use it to submit custom patterns. All orders or questions may be submitted to your local Daltile representative.

### 1 x 3 HERRINGBONE



### 1 x 3 LATTICE WEAVE



STORE \_\_\_\_\_

CUSTOMER NAME \_\_\_\_\_

DATE \_\_\_\_\_

#### PATTERN CODING

- \_\_\_\_\_
- \_\_\_\_\_ COLOR \_\_\_\_\_ %
- \_\_\_\_\_ COLOR \_\_\_\_\_ %
- \_\_\_\_\_ COLOR \_\_\_\_\_ %
- \_\_\_\_\_ COLOR \_\_\_\_\_ %
- \_\_\_\_\_ COLOR \_\_\_\_\_ %
- \_\_\_\_\_ COLOR \_\_\_\_\_ %
- \_\_\_\_\_ COLOR \_\_\_\_\_ %
- \_\_\_\_\_ COLOR \_\_\_\_\_ %

#### NOTES

---



---



---



---



---



---



---

# Digital Resources



## DALTILE.COM

Find tools and information on current products and design inspiration. Browse the Inspiration Gallery, download border and pattern materials, and mix and match with the Tile & Stone Visualizer.



## TILE & STONE VISUALIZER

Watch tile designs come to life with the Tile & Stone Visualizer. Upload a photo of your room or choose an image from our gallery to visualize endless designs. Select wall paint and tile colors, sizes, products, patterns and grout shades for flooring and backsplashes.

[daltile.com/tilestonevisualizer](https://daltile.com/tilestonevisualizer)



IMAGINE WHAT'S POSSIBLE™

7834 C. F. Hawn Freeway | Dallas, TX 75217 | 877.556.5728 | [Daltile.com](https://Daltile.com)

©2018 Daltile (6/18)