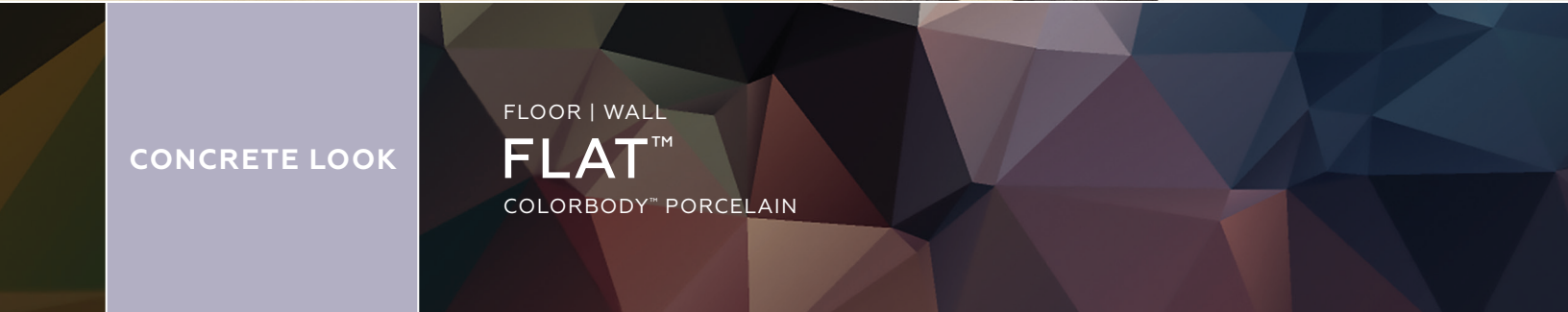




CONCRETE LOOK

FLOOR | WALL
FLAT™
COLORBODY™ PORCELAIN



FLOOR | WALL

FLAT™

COLORBODY™ PORCELAIN

Modern Sophistication

Inspired by the materials of urban architecture, these unpatterned tiles come in cool and warm concrete tones that pair perfectly with the patterned tiles of My City™ and Sector™. Offered in a popular 12" x 24" size, use them to create unique and contemporary visuals in large commercial spaces. Experience a connective synergy of design with the Flat Collection, crafted to echo the cool and warm tones found in the materials of urban architecture. Mix these versatile solids with the coordinating structures like Faction and Aerial to reflect the transformational nature of city life.

- METROPOLIS APPEAL
 - Nine monochromatic neutral colors
 - Concrete-look ColorBody™ Porcelain
 - Coordinates with MyCity and Sector Collections
- LITHE DESIGN
 - 12 x 24 inch size
 - TruEdge rectified edges for smaller grout joints
 - Matte finish



CONCRETE LOOK

USAGE



SPECIAL FEATURES

SEE CHARTS FOR FULL PRODUCT DETAILS

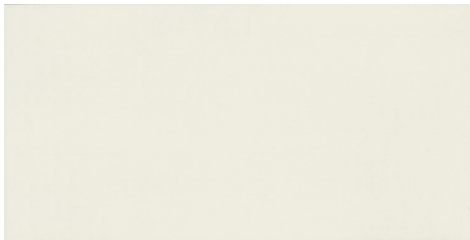
Cover photo features Flat™ Limestone Flat on the floor and Sector™ Element Matrix on the wall. Above photo features Flat™ Cinder Flat on the wall and Sector™ Slate Matrix on the floor & wall.

SIZES:

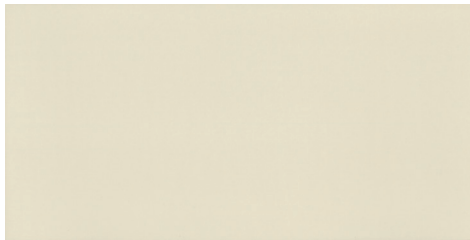


FINISHES: MATTE

FLAT™ – COLORBODY™ PORCELAIN TILE



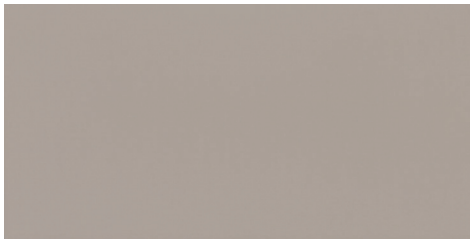
ELEMENT FL30



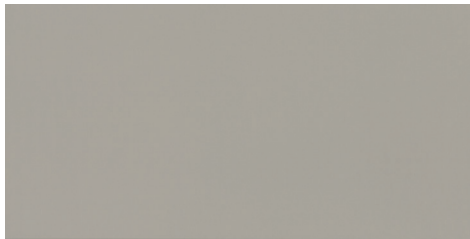
LIMESTONE FL31



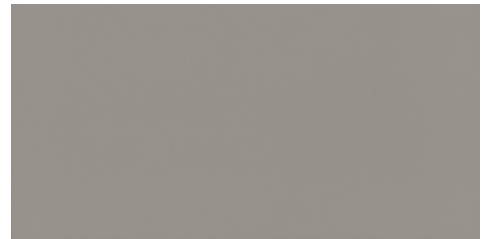
BRICK FL32



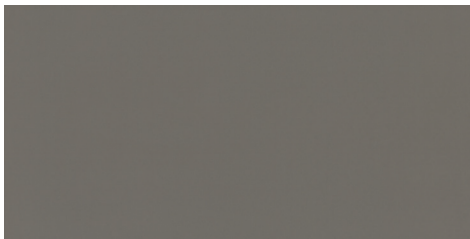
CINDER FL33



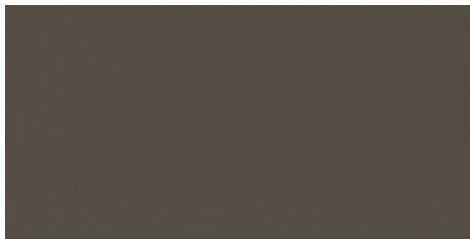
CONCRETE FL34



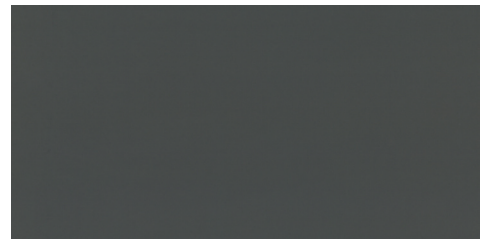
STEEL FL35



IRON FL36



RAIL FL37



SLATE FL38



SLIP RESISTANT



WATERPROOF



STAINPROOF



DENTPROOF



SCRATCH-RESISTANT



FIRE-RESISTANT




CLIMATEPRO™



SIMPLICLEAN™

SIZES

| | | | Thickness | Sq. Ft./ Carton | Pieces/ Carton |
|--|----------------------------|--|-----------|--------------------|-------------------|
|  | 12 x 24 Floor/Wall Tile | (11-13/16" x 23-5/8") (30.00 cm x 60.00 cm) | 5/16" | 11.63 | 6 |

APPLICATIONS


| | Target DCOF wet | Suitable |
|--|--------------------|----------|
| Dry & Level – Interior Floor | N/A | ✓ |
| Wet & Level – Interior Floor | ≥ 0.42 | ✓ |
| Shower Floors (Residential or Light Commercial) | ≥ 0.42 | |
| Exterior Floor Applications (including pool decking & other wet areas with minimal footwear) | ≥ 0.60 | |
| Ramps & Inclines | ≥ 0.65 | |
| Walls/Backsplashes | N/A | ✓ |
| Countertops | N/A | ✓ |
| Pool Linings | N/A | |

A DCOF value of ≥0.42 is the standard for tiles specified for level interior spaces expected to be walked upon when wet, as stated in ANSI A137.1-A326.3. For more information about DCOF and the DCOF AcuTest™, visit daltile.com/DCOF.

APPLICATION NOTES:

Suitable for exterior applications in non-freezing climates, when proper installation methods are followed.

INSTALLATION

| Grout Joint Recommendation | Shade Variation |
|---|---|
| Floor: 1/8" (3/16" when installing tile with a length 15" or greater in a staggered brick-joint pattern; overlap should not exceed 33%). |  Medium (V2) |

PERFORMANCE CHARACTERISTICS

| | ASTM# | Result |
|---------------------|-------|-----------|
| Water Absorption | C373 | < 0.5% |
| Breaking Strength | C648 | > 275 lbs |
| Scratch Hardness | MOHS | 8.0 |
| Chemical Resistance | C650 | Resistant |
| Abrasion Resistance | C1027 | N/A |

For additional information on test results, visit us at: daltile.com/information/TestResults.

NOTES

Since there are variations in all fired ceramic and natural products, tile and trim supplied for your particular installation may not match samples. Final confirmation should be made from actual tiles and trim prior to installation. Manufactured in accordance with ANSI A137.1 standards.

Not for use on ramps. Water, oil, grease, improper drainage and certain footwear can create slippery conditions. Floor applications expected to be exposed to these conditions require extra caution in product selection.

Random visuals enhance the natural beauty of this product. To achieve optimal results, all tile should be selected from multiple cartons and shading and graphic arrangement planned prior to installation.

Special consideration needs to be given when installing tiles greater than 15 inches. Please refer to daltile.com/LargeTiles for more information.

Special care should be taken when grouting with dark pigmented colors. A grout release is recommended to prevent finely powdered pigments from lodging in the pores of the surface. Use of a latex modified thin-set is recommended for installation.

For additional information refer to "Factors to Consider" at: daltile.com/Factors.

Product Design Consultant **Gensler**



All or select items within this series meet the requirements for these qualifications. For more information, visit daltile.com.



7834 C.F. Hawn Freeway,
Dallas, Texas 75217 | 1.800.933.TILE

To view the complete collection of Daltile® products and information, visit our website at daltile.com.

