



FLOOR | WALL

KONCRETE™

GLAZED CERAMIC with REVEAL IMAGING®

 **daltile®**
IMAGINE WHAT'S POSSIBLE™



Cover and above photos feature Koncrete™ Grey 12 x 24 floor tile on the floor with White 4 x 12 wall tile and Cool Catena 4 x 12 decorative accent on the backsplash.

Affordable Style

Bring home the perfect blend of soft cement and fabric visuals with Koncrete™. This modern aesthetic offered in a balanced, neutral color palette is perfect for bringing out the softer side of minimalism. Paired with the coordinating geo-patterned Maderno or Catena accents, you'll transform your space into the perfect gathering spot for friends and family.

- **CONCRETE AND FABRIC CHIC**
 - Soft concrete and fabric looks perfectly blended in a stylish color palette
 - Modern design is ideal for elevating the space on a budget
- **CONTEMPORARY LIFESTYLE**
 - Complete floor, wall, mosaic and trim offering including a 4 x 12 wall tile
 - Decorative wall accent offered in two geo-pattern designs in warm and cool tones



POST-CONSUMER RECYCLED MATERIALS



PRE-CONSUMER RECYCLED MATERIALS



MADE IN THE U.S.A.



REVEAL IMAGING®

All or select items within this series meet the requirements for these qualifications. For more information visit daltile.com.

USAGE

Floors Walls Countertops

F W C

GLAZED CERAMIC FLOOR TILE



WHITE KC01



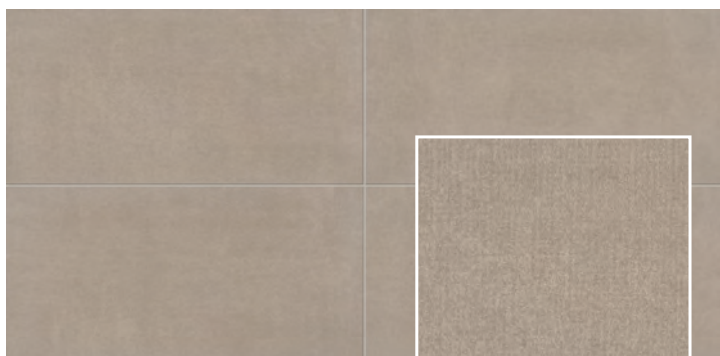
CLOSE UP



BEIGE KC02



CLOSE UP



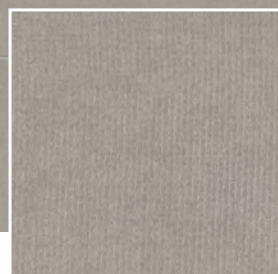
GREIGE KC03



CLOSE UP



GREY KC04

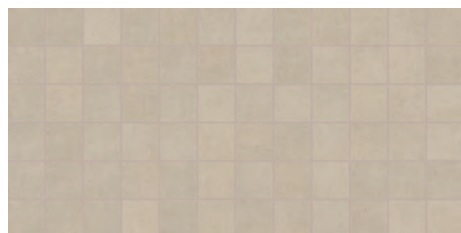


CLOSE UP

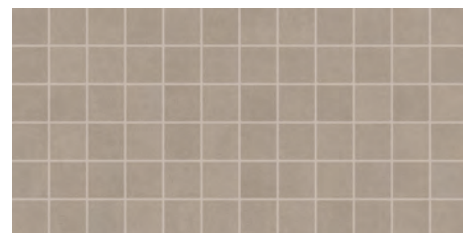
2 x 2 GLAZED CERAMIC MOSAIC



WHITE KC01



BEIGE KC02

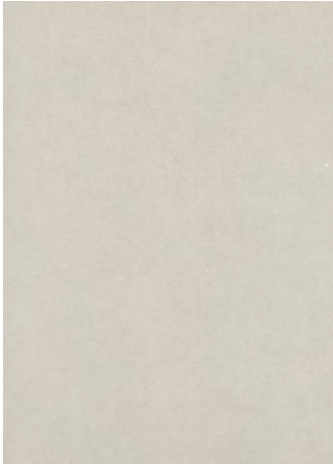


GREIGE KC03

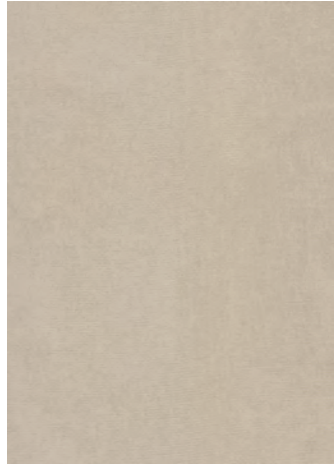


GREY KC04

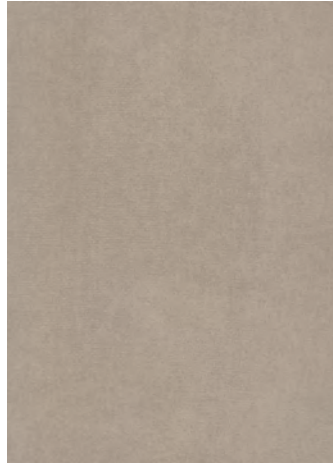
10 x 14 GLAZED CERAMIC WALL TILE



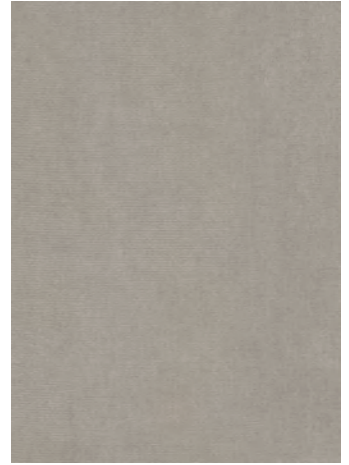
WHITE KC01



BEIGE KC02

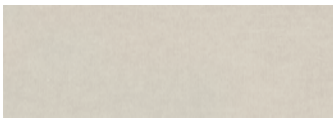


GREIGE KC03

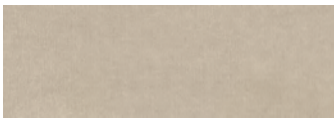


GREY KC04

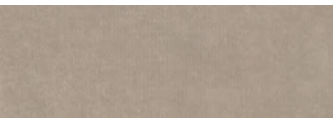
4 x 12 GLAZED CERAMIC WALL TILE



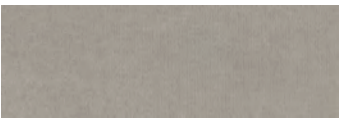
WHITE KC01



BEIGE KC02

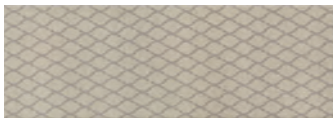


GREIGE KC03



GREY KC04

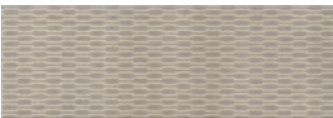
4 x 12 DECORATIVE WALL ACCENTS



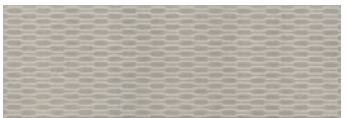
WARM MADERNO KC06
(Coordinates with KC02 & KC03)



COOL MADERNO KC05
(Coordinates with KC01 & KC04)



WARM CATENA KC08
(Coordinates with KC02 & KC03)





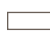
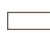



COOL CATENA KC07
(Coordinates with KC01 & KC04)

KONCRETE™

GLAZED CERAMIC with REVEAL IMAGING®

SIZES

			Thickness	Sq. Ft./ Carton	Pieces/ Carton
	12 x 24 Floor Tile	(11-9/16" x 23-3/8") (29.40 cm x 59.30 cm)	3/8"	15.04	8
	18 x 18 Floor Tile	(17-1/2" x 17-1/2") (44.45 cm x 44.45 cm)	5/16"	17.04	8
	12 x 12 Floor Tile	(11-13/16" x 11-13/16") (30.00 cm x 30.00 cm)	5/16"	14.55	15
	10 x 14 Wall Tile	(9-13/16" x 13-15/16") (24.99 cm x 35.40 cm)	5/16"	14.25	15
	4 x 12 Wall Tile	(4-1/4" x 12-7/8") (10.91 cm x 32.77 cm)	5/16"	10.64	28
	4 x 12 Decorative Wall Accent	(4-1/4" x 12-7/8") (10.91 cm x 32.77 cm)	5/16"	N/A	28
	2 x 2 Mosaic (Dot-mounted on 12" x 24" Sheet)	(12" x 24" Sheet) (30.48 cm x 60.96 cm Sheet)	1/4"	24.00	12

APPLICATIONS

	Target DCOF wet	Suitable
Dry & Level – Interior Floor	N/A	✓†
Wet & Level – Interior Floor	≥ 0.42	✓†
Shower Floors (Residential or Light Commercial)	≥ 0.42	✓*
Exterior Floor Applications (including pool decking & other wet areas with minimal footwear)	≥ 0.60	
Ramps & Inclines	≥ 0.65	
Walls/Backsplashes	N/A	✓
Countertops	N/A	✓†
Pool Linings	N/A	✓*

A DCOF value of ≥ 0.42 is the standard for tiles specified for level interior spaces expected to be walked upon when wet, as stated in ANSI A137.1-2012, Section 9.6. For more information about DCOF and the DCOF AcuTest™, visit daltile.com/DCOF.

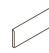
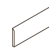




APPLICATION NOTES:

Suitable for exterior applications in non-freezing climates, when proper installation methods are followed.


† Wall tile not suitable for this application.

* Mosaic tile only

TRIM

	Type	Number	Size	Pieces/ Carton
	Floor Bullnose	P-43C9	3 x 12	22
	Wall Bullnose (10" side)	S-4310	3 x 10	54
	Wall Bullnose Corner	SN-4310	3 x 3	32
	Quarter Round	A-106	1 x 6	152
	Quarter Round Corner	UC-106	1 x 1	40
	12" Jolly	S-1/212J	1/2 x 11-15/16	12

INSTALLATION

Grout Joint Recommendation	Shade Variation
<p>Floor: 3/16" (Overlap should not exceed 33% when installing tile with a length 15" or greater in a staggered brick-joint pattern.)</p> <p>Wall: 10 x 14: 1/16" 4 x 12: 1/16" (When rectangular size is installed in a staggered brick-joint pattern, overlap should not exceed 33%.)</p> <p>Mosaic: 1/8"</p>	 High (V3)

PERFORMANCE CHARACTERISTICS

	ASTM#	Floor Result	Wall Result	Mosaic Result
Water Absorption	C373	< 7.0%	< 20.0%	< 3.0%
Breaking Strength	C648	> 250 lbs	120-230 lbs	> 250 lbs
Scratch Hardness	MOHS	7.0	4.0-6.0	7.0
Chemical Resistance	C650	Resistant	Resistant	Resistant
Abrasion Resistance	C1027	3	N/A	3

For additional information on test results, visit us at: daltile.com/information/TestResults.

NOTES

Since there are variations in all fired ceramic and natural products, tile and trim supplied for your particular installation may not match samples. Final confirmation should be made from actual tiles and trim prior to installation. Manufactured in accordance with ANSI A137.1 standards.

Not for use on ramps. Water, oil, grease, improper drainage and certain footwear can create slippery conditions. Floor applications expected to be exposed to these conditions require extra caution in product selection.

For additional information refer to "Factors to Consider" at: daltile.com/Factors.

Special consideration needs to be given when installing tiles greater than 15 inches. Please refer to daltile.com/LargeTiles for more information.



DESIGNED TO HELP EARN LEED™ CREDITS. For more detailed information, visit daltilegreenworks.com.

7834 C.F. Hawn Freeway,
Dallas, Texas 75217 | 1.800.933.TILE

To view the complete collection of Daltile® products and information, visit our website at daltile.com.



IMAGINE WHAT'S POSSIBLE™

©2017 Daltile (10/17)