



WALL

**SLIMLITE™ PORCELAIN PANELS**  
GLAZED PORCELAIN

 **daltile®**  
IMAGINE WHAT'S POSSIBLE™



Cover photo features SlimLite™ Alloy Effects in Distressed Copper on the wall.  
Above photo features SlimLite™ Classic in Oyster on the wall.

## Thin Panels with Endless Options

Available in five collections and an array of colors, these thin panels allow for endless design possibilities. Each of the collections—Classic, Coastline, Terra, Alloy Effects and Metallic—boast distinct features such as a distressed metal look, vibrant colors or a modern pin dot pattern. Available in large sizes up to 39 x 118, SlimLite Panels are ideal for interior or exterior wall applications. Made of 100% natural products, the environmentally friendly thin panel design uses less energy during production and reduces your costs while maintaining quality performance standards.

- A BUREAU OF OPTIONS
  - Available in large sizes up to 39 x 118
  - Offered in 5 collections: Classic, Coastline, Terra, Alloy Effects and Metallic
- NATURAL DESIGN
  - Made of 100% natural products
  - Can be installed over existing tile



SLIMLITE™



REVEAL IMAGING®❖



TRU-EDGE™

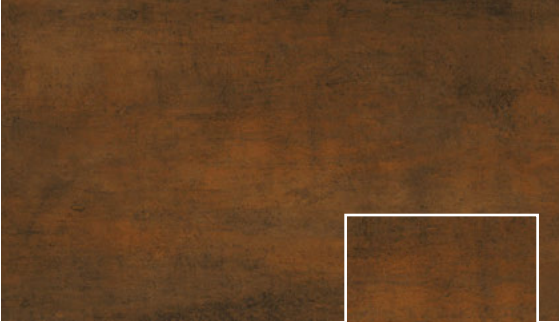
❖ Alloy Effects collection only

CERTIFIED  
**PORCELAIN**  
TILE  
0.5% or less water absorption

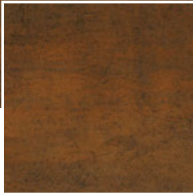
# SLIMLITE™ PORCELAIN PANELS

GLAZED PORCELAIN

## ALLOY EFFECTS COLLECTION COLORBODY™ PORCELAIN



DISTRESSED COPPER TP48 (4) NEW



CLOSE-UP OF TILE



DISTRESSED ZINC TP47 (4) NEW

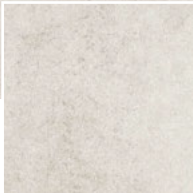


DISTRESSED BRASS TP49 (4) NEW

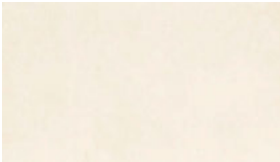
## COASTLINE COLLECTION



BEACH TP35 (3)



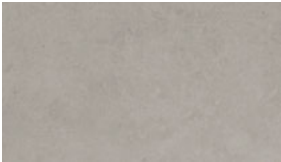
CLOSE-UP OF TILE



MIST TP31 (3)

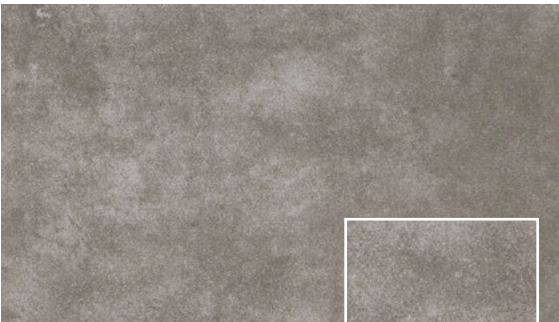


SHORELINE TP32 (3)



FOG TP36 (3)

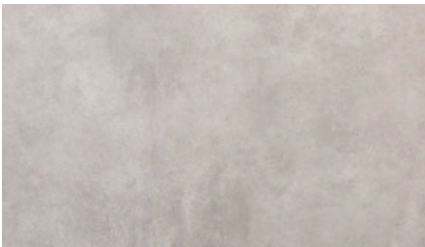
## TERRA COLLECTION



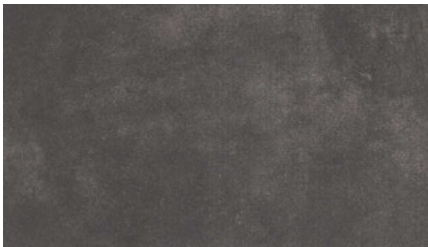
ROCK TP44 (3)



CLOSE-UP OF TILE



STONE TP54 (3) NEW



CORE TP45 (3)

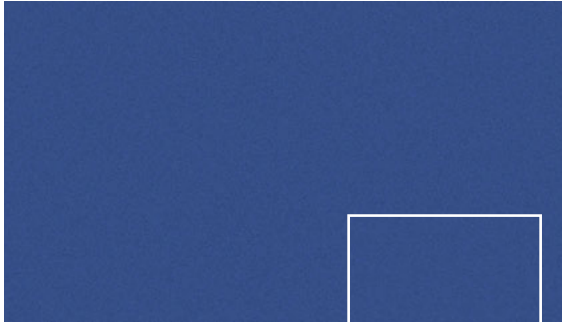
(1), (2), (3) and (4) indicate Price Groups, (1) being the least expensive.

WALL

# SLIMLITE™ PORCELAIN PANELS

GLAZED PORCELAIN

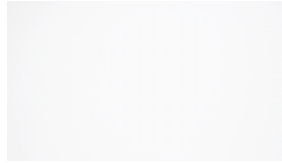
## CLASSIC COLLECTION COLORBODY™ PORCELAIN



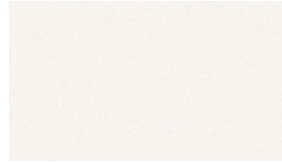
COBALT TP15 (3)



CLOSE-UP  
OF TILE



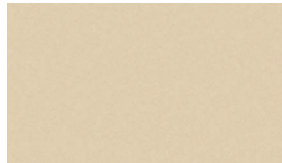
CLOUD TP17 (4) NEW



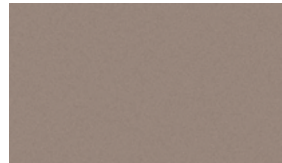
OYSTER TP01 (3)



MACADAMIA TP16 (2)



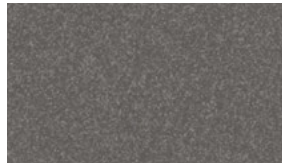
ALMOND TP05 (1)



TAUPE TP12 (2)



SMOKE TP02 (1)

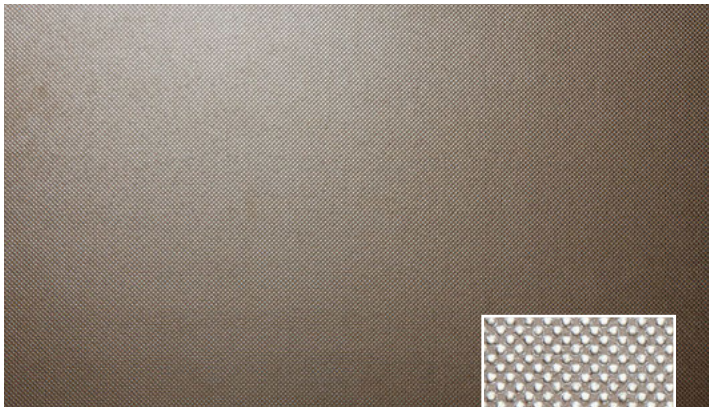


GRAVEL TP03 (2)

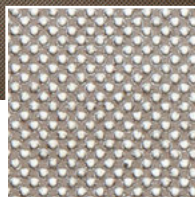


BLACK TP04 (2)

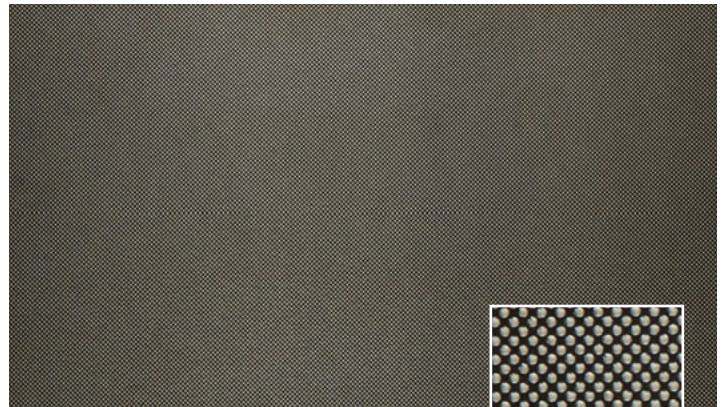
## METALLIC COLLECTION COLORBODY™ PORCELAIN



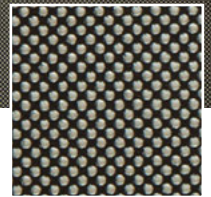
PEWTER ALMOND TP91 (4)



CLOSE-UP  
OF TILE



PEWTER BLACK TP92 (4)








CLOSE-UP  
OF TILE

(1), (2), (3) and (4) indicate Price Groups, (1) being the least expensive.

# SLIMLITE™ PORCELAIN PANELS

## GLAZED PORCELAIN

### SIZES

			Thickness	Sq. Ft. per Carton	Pieces per Carton
	20 x 39 Panel *	(19.68" x 39.37" Panel) (50.00 cm x 100.00 cm Panel)	3.5 mm	32.28	6
	20 x 59 Panel **	(19.68" x 59.05" Panel) (50.00 cm x 150.00 cm Panel)	3.5 mm	Up to 807.00	Up to 100
	39 x 39 Panel *	(39.37" x 39.37" Panel) (100.00 cm x 100.00 cm Panel)	3.5 mm	43.04	4
	39 x 59 Panel **	(39.37" x 59.05" Panel) (100.00 cm x 150.00 cm Panel)	3.5 mm	Up to 807.00	Up to 50
	39 x 118 Panel **	(39.37" x 118.11" Panel) (100.00 cm x 300.00 cm Panel)	3.5 mm	Up to 1,291.60	Up to 40

\* Purchase will convert to full carton within size/color ordered.

\*\* Panels are packed in a crate.

All products within the SlimLite Porcelain Panels series are available via special order only, with a lead time of 10-12 weeks.

### APPLICATIONS





	Suitable
Floors	
Walls/Backsplashes	✓
Countertops	✓
Pool Linings	

#### APPLICATION NOTES:

Suitable for exterior applications in freezing and non-freezing climates when proper installation methods are followed.

Metallic collection is not suitable for countertops or exterior walls.

### INSTALLATION

Grout Joint Recommendation	Shade Variation
Interior: 1/16" Exterior: 3/8"	 Classic (V1)
	 Metallic (V2)
	 Coastline & Terra (V3)
	 Alloy Effects (V4)

### TEST RESULTS

	ASTM#	Results
Water Absorption	C373	< 0.5%
Breaking Strength	C648	> 120 lbs
Scratch Hardness	MOHS	7.0
Chemical Resistance	C650	Resistant

For additional information, visit [daltile.com/information/TestResults](http://daltile.com/information/TestResults).

### NOTES

Please refer to the special handling instructions and the setting material vendor's installation specification.

Special consideration needs to be given when installing tiles greater than 15 inches. Please refer to [daltile.com/LargeTiles](http://daltile.com/LargeTiles) for more information.

Strong random shading enhances the natural beauty of this product. To achieve optimal results, tile should be selected from multiple cartons and shading arrangement planned prior to installation.

For additional information refer to "Factors to Consider" at [daltile.com/Factors](http://daltile.com/Factors).



DESIGNED TO HELP EARN LEED™  
CREDITS. For more detailed information,  
visit [daltilegreenworks.com](http://daltilegreenworks.com).



SCAN QR CODE  
FOR PRODUCT  
INFORMATION

Get a QR Code  
reader at:  
[GET.DALTILE.COM](http://GET.DALTILE.COM)



7834 C. F. Hawn Freeway,  
Dallas, Texas 75217 | 1.800.933.TILE

To view the complete collection of  
Daltile® products and information,  
visit our website at [daltile.com](http://daltile.com).



IMAGINE WHAT'S POSSIBLE™

©2016 Daltile (12/16)