



FLOOR

KIMONA SILK™
COLORBODY™ PORCELAIN

 **daltile®**
IMAGINE WHAT'S POSSIBLE™



Above and cover photos feature Water Chestnut 12 x 24 field tile with 2 x 24 cut tile on the floor.

Woven Serenity

Surround yourself with the tranquil look of Kimona Silk™. This ColorBody™ Porcelain, available in multiple large-format sizes, was inspired by the quintessential appearance of woven silk fabric. Its classic style and 7 neutral colors make it appealing to multiple design applications and tastes. Kimona Silk's soothing fabric look and classic appeal will add a Zen-like atmosphere to any room.

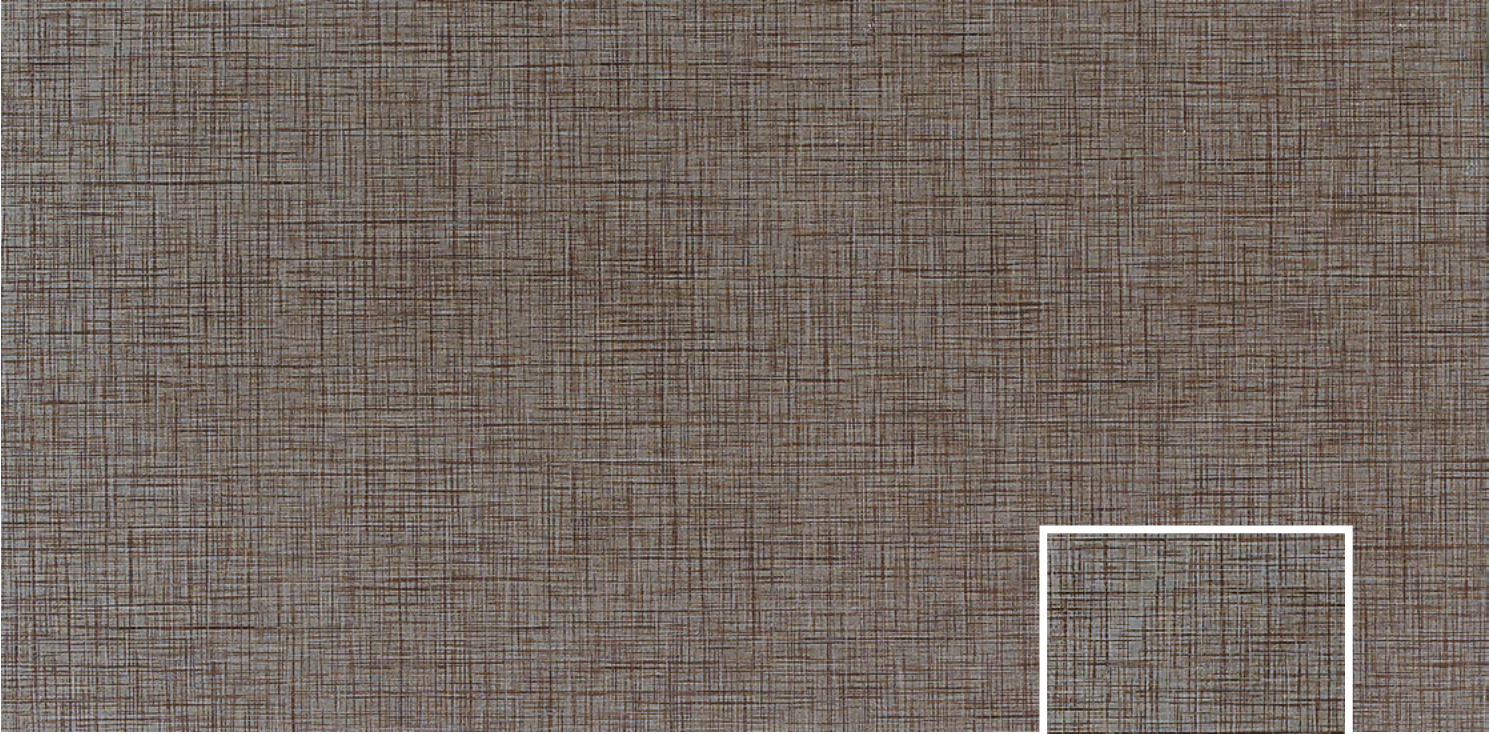
- SERENE STYLE
 - Woven silk visual gives it a quintessential appearance
 - Soft neutral color palette includes both warm and cool colors
- INSPIRING OPTIONS
 - Multiple sizes, including large-format sizes, allow for several pattern options
 - Coordinating mosaic and trim shapes available

 PRE-CONSUMER RECYCLED MATERIALS

 TRU-EDGE

 CERTIFIED PORCELAIN TILE
0.5% OF TOTAL WATER RESISTANCE

FIELD TILE



WATER CHESTNUT P323



Close-up of Field Tile



WHITE ORCHID P320



RICE PAPER P321



SPROUT P322



CHAI TEA P324



MORNING DOVE P325



PANDA BLACK P327

FLOOR

KIMONA SILK™

COLORBODY™ PORCELAIN

SIZES

			Thickness	Sq. Ft. per Carton	Pieces per Carton
	24 x 24 Field Tile (23-7/16" x 23-7/16") (59.44 cm x 59.44 cm)		3/8"	15.28	4
	12 x 24 Field Tile (11-5/8" x 23-7/16") (29.56 cm x 59.44 cm)		3/8"	15.28	8
	12 x 12 Field Tile (11-1/2" x 11-1/2") (29.56 cm x 29.56 cm)		3/8"	10.23	11
	2 x 2 Mosaic (Mesh-mounted on 12" x 12" Sheet)	(11-1/2" x 11-1/2" Sheet) (29.56 cm x 29.56 cm Sheet)	3/8"	11.40	12

FLOOR APPLICATIONS

	Target DCOF wet	Suitable
Dry & Level – Interior	N/A	✓
Wet & Level – Interior	≥ 0.42	✓
Exterior Applications; Pool Decking & Other Wet Areas with Minimal Footwear	≥ 0.60	
Ramps & Inclines	≥ 0.65	

A DCOF value of ≥ 0.42 is the standard for tiles specified for level interior spaces expected to be walked upon when wet, as stated in ANSI A137.1-2012, Section 9.6. For more information about DCOF and the DCOF AcuTest™, visit daltile.com/DCOF.

OTHER APPLICATIONS

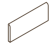
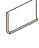

	Suitable
Walls/Backsplashes	✓
Countertops	✓
Pool Linings	✓*

APPLICATION NOTES:

* Mosaic only

Suitable for exterior applications in freezing and non-freezing climates when proper installation methods are followed.


TRIM

	Type	Number	Size	Pieces per Carton
	Bullnose	S-43C9	3 x 12	30
	Cove Base**	P-36C9T	6 x 12	22
	Cove Base** Outcorner	PC-36C9T	1 x 6	15

Bullnose, cove base and cove base corner trim are intended to coordinate with floor field tile in the standard 90-degree installation position.

** Cove base and cove base outcorner trim are clay body ceramic suitable for exterior applications in non-freezing climates only.

INSTALLATION

Grout Joint Recommendation	Shade Variation
1/8" (3/16" when multiple sizes are installed in a modular pattern and/or when tile with a length 15" or greater is installed in a staggered brick-joint pattern. Overlap should not exceed 33%)	 Medium (V2)

TEST RESULTS

	ASTM#	Result
Water Absorption	C373	< 0.5%
Breaking Strength	C648	> 450 lbs.
Scratch Hardness	MOHS	8.0
Chemical Resistance	C650	Resistant

NOTES

Special consideration needs to be given when installing tiles greater than 15 inches. Please refer to daltile.com/LargeTiles for more information.

Special care should be taken when grouting with dark pigmented colors. A grout release is recommended to prevent finely powdered pigments from lodging in the pores of the surface. Use of a latex modified thin-set is recommended for installation.

Since there are variations in all fired ceramic products, tile and trim supplied for your particular installation may not match these samples. Final color selection should be made from actual tiles and trim and not from tile samples or color reproductions. Manufactured in accordance with ANSI A137.1 standards.

Water, oil, grease, etc. create slippery conditions. Floor applications with exposure to these conditions require extra caution in product selection. Not for use on ramps.

For additional information refer to "Factors to Consider" at: daltile.com/Factors



DESIGNED TO HELP EARN LEED™ CREDITS. For more detailed information, visit daltilegreenworks.com.

SCAN QR CODE FOR PRODUCT INFORMATION

Get a QR Code reader at: GET.DAL TILE.COM



7834 C. F. Hawn Freeway,
Dallas, Texas 75217 | 1.800.933.TILE

To view the complete collection of Daltile® products and information, visit our website at daltile.com.



IMAGINE WHAT'S POSSIBLE™

©2016 Dal-Tile Corporation (7/16)