



FLOOR | WALL

FORMULA™
COLORBODY™ PORCELAIN

 **daltile®**
IMAGINE WHAT'S POSSIBLE™



Cover photo features Equation Grey in 24 x 24 on the floor.
Above photo features Theorem Ivory in 12 x 24 on the floor.

Beauty Grounded in Strength

Timeless style meets advanced technology with Formula™. This sleek, double-load porcelain tile is engineered for optimal durability, adding stylish design to high-traffic spaces and lasting sophistication to any floor or wall application. Available in seven natural colors in polished and unpolished finishes, this versatile tile is impressive in both form and function.

- **INNOVATION THAT ENDURES**
 - Advanced double-layered technology allows optimum durability
 - Even high-traffic areas can achieve exceptional style with this contemporary yet timeless look
- **ENDLESS OPTIONS FOR INFINITE STYLE**
 - Available in seven versatile colors in polished or unpolished finishes
 - Ideal for commercial, institutional or residential floor and wall applications
 - Offered in 12 x 24, 24 x 24 and 24 x 48 sizes with coordinating trim



**PRE-CONSUMER
RECYCLED MATERIALS**



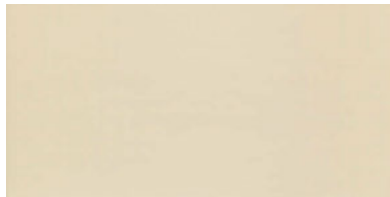
TRU-EDGE



FIELD TILE – UNPOLISHED



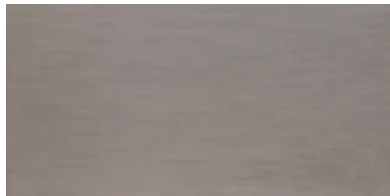
THEOREM IVORY FM93



PLANES TAUPE FM98



EQUATION GREY FM96



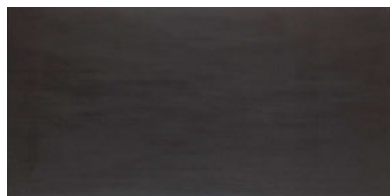
AXIOM SILVER FM94



ROOTS BROWN FM97



INTERSECTION ANTHRACITE FM95



UNION BLACK FM99

FIELD TILE – POLISHED



THEOREM IVORY FM93



PLANES TAUPE FM98



EQUATION GREY FM96



AXIOM SILVER FM94



ROOTS BROWN FM97



INTERSECTION ANTHRACITE FM95






UNION BLACK FM99

FORMULA™

COLORBODY™ PORCELAIN

SIZES

			Thickness	Sq. Ft. per Carton	Pieces per Carton
	24 x 48 Field Tile	(23-3/8" x 47") (59.44 cm x 119.30 cm)	3/8" Polished 7/16" Unpolished	15.50	2
	24 x 24 Field Tile	(23-3/8" x 23-3/8") (59.44 cm x 59.44 cm)	3/8" Polished 7/16" Unpolished	11.64	3
	12 x 24 Field Tile	(11-5/8" x 23-3/8") (29.56 cm x 59.44 cm)	3/8" Polished 7/16" Unpolished	9.70	5

FLOOR APPLICATIONS

	Target DCOF wet	Suitable
Dry & Level – Interior	N/A	✓
Wet & Level – Interior	≥ 0.42	✓*
Exterior Applications; Pool Decking & Other Wet Areas with Minimal Footwear	≥ 0.60	
Ramps & Inclines	≥ 0.65	

A DCOF value of ≥ 0.42 is the new standard for tiles specified for commercial application in standard A137.1–2012, Section 9.6. It replaces the SCOF value of ≥ 0.60 referenced in ASTM C1028. For more information on the correlation between the two values and about the DCOF AcuTest™, visit www.daltile.com/dcof.

OTHER APPLICATIONS

	Suitable
Walls/Backsplashes	✓
Countertops	✓
Pool Linings	

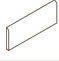
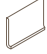

APPLICATION NOTES:

* Unpolished surface only

Suitable for exterior applications in freezing and non-freezing climates when proper installation methods are followed.


Polished surface is suitable only for dry and level floor applications.

TRIM

	Type	Number	Size	Pieces per Carton
	Bullnose (Polished & Unpolished)	S-43F9	3 x 24	14
	Cove Base	S-36C9T	6 x 12	20
	Cove Base Corner	SC-36C9T	1 x 6	10

Bullnose, cove base and cove base corner trim are intended to coordinate with floor field tile in the standard 90-degree installation position.

INSTALLATION

Grout Joint Recommendation	Shade Variation
1/8" (3/16" when multiple sizes are installed in a modular pattern, and when rectangular size is installed in a staggered brick-joint pattern; overlap should not exceed 33%)	 High (V3)

TEST RESULTS

	ASTM#	Result
Water Absorption	C373	< 0.5%
Breaking Strength	C648	> 300 lbs.
Scratch Hardness	MOHS	8.0
Chemical Resistance	C650	Resistant

NOTES

Special consideration needs to be given when installing tiles 20" and larger. Please refer to daltile.com/LargeTiles for more information.

Special care should be taken when grouting with dark pigmented colors. A grout release is recommended to prevent finely powdered pigments from lodging in the pores of the surface. Use of a latex modified thin-set is recommended for installation.

Since there are variations in all fired ceramic products, tile and trim supplied for your particular installation may not match these samples. Final color selection should be made from actual tiles and trim and not from tile samples or color reproductions. Manufactured in accordance with ANSI A137.1 standards.

Water, oil, grease, etc. create slippery conditions. Floor applications with exposure to these conditions require extra caution in product selection. Not for use on ramps.

For additional information refer to "Factors to Consider" at daltile.com/Factors.



DESIGNED TO HELP EARN LEED™ CREDITS. For more detailed information, visit daltilegreenworks.com.

SCAN QR CODE FOR PRODUCT INFORMATION

Get a QR Code reader at: GET.DAL TILE.COM



7834 C. F. Hawn Freeway, Dallas, Texas 75217 | 1.800.933.TILE

To view the complete collection of Daltile® products and information, visit our website at daltile.com.



IMAGINE WHAT'S POSSIBLE™

©2016 Dal-Tile Corporation (3/16)