



DECORATIVE

RENDER METALS™
METAL

 **daltile®**
IMAGINE WHAT'S POSSIBLE™



Cover and above photos feature Render Metals™ Iron Oblique 3 x 18 on the wall and Haut Monde™ Empire Black 12 x 24 on the floor.

Energize Any Interior Wall

Create a unique appeal with the handcrafted strength and sophistication of Render Metals. The invigorating look of traditional metal can now be an essential element in even the most moisture-prone interior wall spaces. From hospitality to high-end residences, four striking patterns and four metallic shades make every project look custom.

- AN ELEMENT OF ELEGANCE
 - The invigorating look of traditional metal can now energize moisture-prone interior wall spaces such as bathrooms and showers
 - Achieve a high-end look that is also low maintenance
- MORE WAYS TO WOW
 - Available in four striking patterns with four metallic shades to complement both rustic and modern designs
 - Offered in an on trend longer size for maximum design impact



MADE IN THE U.S.A.

All or select items within this series meet the requirements for these qualifications. For more product information, visit daltile.com.

WALL TILE



PEWTER RE96 – PANED



Close-Up



PEWTER RE96 – PLEATED



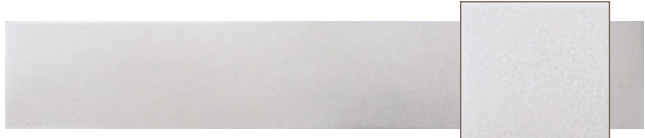
Close-Up



PEWTER RE96 – OBLIQUE



Close-Up



PEWTER RE96



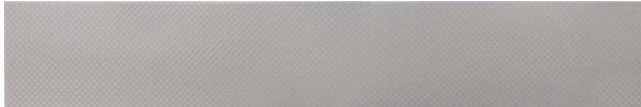
Close-Up



IRON RE97 – PANED



IRON RE97 – PLEATED



IRON RE97 – OBLIQUE



IRON RE97



CLASSIC BRONZE RE98 – PANED



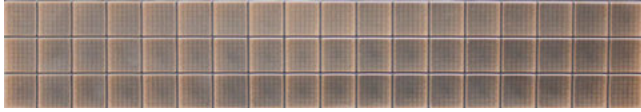
CLASSIC BRONZE RE98 – PLEATED



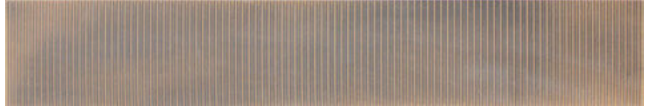
CLASSIC BRONZE RE98 – OBLIQUE



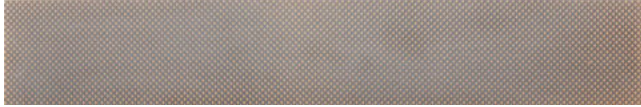
CLASSIC BRONZE RE98



OIL RUBBED BRONZE RE99 – PANED



OIL RUBBED BRONZE RE99 – PLEATED



OIL RUBBED BRONZE RE99 – OBLIQUE




OIL RUBBED BRONZE RE99

DECORATIVE

RENDER METALS™

METAL

SIZES

			Thickness	Pieces per Carton
	3 x 18 Wall Tile	(3" x 18") (7.62 cm x 45.77 cm)	5/16"	24

APPLICATIONS

	Suitable
Floors	
Walls/Backsplashes	✓*
Countertops	
Pool Linings	


APPLICATION NOTES:

* Suitable for interior applications only when proper installation methods are followed.

Recommended for use as a wall covering in interior, vertical applications. Not suitable for flooring, countertops or exterior applications.

Product can be installed in wet areas such as backsplashes, bathroom walls and shower enclosures, but is not recommended in swimming pools or hot tubs as pool chemicals may harm protective coating.

INSTALLATION

Grout Joint Recommendation	Shade Variation
1/8" (when installed in a staggered brick-joint pattern; overlap should not exceed 33%)	 Medium (V2)

NOTES

Render Metals™ is a cast metal collection and is permanently protected by Q-Seal™: Stain and scratch resistant, antimicrobial.

Due to the handcrafted nature of Render Metals, variations in structure can be expected and are intended to enhance the visual interest of this artisan product. Special care should be used in installation; see installation instructions for details.

Since there are variations in all fired ceramic products, tile and trim supplied for your particular installation may not match these samples. Final color selection should be made from actual tiles and trim and not from tile samples or color reproductions.

For additional information refer to "Factors to Consider" at daltile.com/Factors.



DESIGNED TO HELP EARN LEED™ CREDITS. For more detailed information, visit daltilegreenworks.com.



SCAN QR CODE FOR PRODUCT INFORMATION

Get a QR Code reader at: GET.DALTILE.COM



7834 C. F. Hawn Freeway | Dallas, Texas 75217 | 1.800.933.TILE

To view the complete collection of Daltile® products and information, visit our website at daltile.com.

©2016 Daltile (11/16)