

# Flat Back Contemporary Corner Shelves

## Installation, Use & Care Instructions



*Thank you for your purchase, please enjoy your new Contemporary Corner Shelf. These products are designed for easy installation over new or existing wall surfaces. They complement any ceramic, porcelain, metal or stone tile.*

### MATERIAL INSPECTION

The owner or owner's representative is responsible for determining the acceptability of the product prior to installation. Each box should be opened and inspected upon delivery of the order.

No adjustments will be made after installation.

### Q-SEAL™ PERMANENT PROTECTION

This product is protected by Q-Seal, a permanent sealer that is water and stain resistant, protects against abrasion. Q-Seal features Ultra-Fresh® anti-microbial protection, which inhibits the growth of stain and odor-causing mold and mildew. Q-Seal is factory-applied and never needs re-sealing. Stone or grout sealer inadvertently applied to the surface cannot penetrate or adversely affect Q-Seal. Simply wipe excess sealer off of the shelf.



### APPLICATIONS & USES

	Suitable
Walls / Backsplashes	√
Countertops	
Pool Linings	

Interior Use Only; Not suitable for painted surfaces. Corner shelves may be installed in wet areas such as backsplashes, bathroom walls, shower enclosures and steam rooms, but are not recommended in swimming pools or hot tubs because pool chemicals may harm the protective coating.

### APPROVED SURFACES

The performance of a properly installed corner shelf is dependent upon the durability of the surface to which it is bonded, and in a 90° square corner. Approved surfaces include: natural stone, marble, ceramic, porcelain, glass, fiberglass reinforced wall panels and *un-painted* drywall.

### RECOMMENDED ADHESIVES

Select one of the following adhesive types most suitable for your application, that is: gap filling, water resistant, recommended for tile & stone and has a rapid set time.

1. **2-PART EPOXY GEL/PASTE ADHESIVE** (Designed for vertical and overhead surfaces; no-run, no-drip formula);  
RECOMMENDED:
  - Laticrete Latapoxy 310 Stone Adhesive
  - Mapei Kerapoxy Adhesive

- Custom Building EBM-Lite Premium Epoxy Bonding Mortar
- Devcon 5 Minute Epoxy Gel
- Loctite Epoxy Gel

2. **POLYURETHANE CONSTRUCTION ADHESIVE** (1 part polyurethane formula);

#### RECOMMENDED:

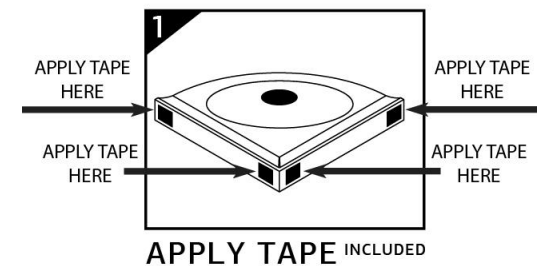
- Loctite PL Premium Polyurethane
- Loctite Premium Fast Grab Polyurethane
- Sika Pro Select
- Liquid Nails Polyurethane

### INSTALLATION INSTRUCTIONS

#### STEP 1 – POSITION AND APPLY TAPE

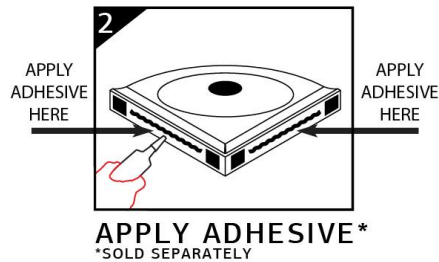
Locate position at desired height for install and mark it (use grout line when available, for easy clean up apply painter's tape along the top & bottom edge.)

Use 4 pieces of double sided tape **provided** and place on the 4 specified areas on the back of the shelf – remove paper tabs before installing.

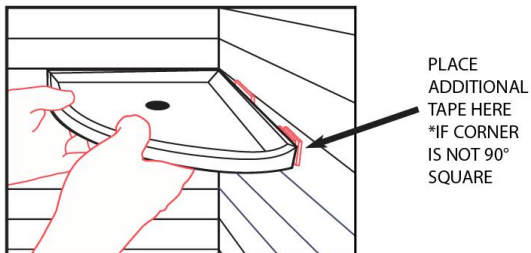


## STEP 2 – APPLY RECOMMENDED ADHESIVE

Following the adhesive manufacturer's instructions, apply adhesive along guideline on back edges of the shelf.

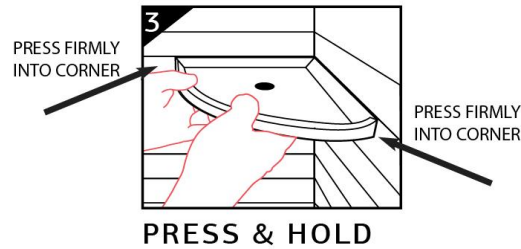


\*Note: If corner is not 90° square, add additional pieces of tape (included) to specified areas in order to fill the gap between the shelf and the approved surface to ensure contact with the wall (as shown below).



## STEP 3 – HOLD AND SUPPORT IN PLACE

Press and hold the shelf in the desired location for 1-2 minutes until an initial bond is formed by the double sided tape. Optional: Once adhesive is applied and the part is positioned, it can be supported until the adhesive sets up sufficiently to form a final bond.



## STEP 4 - CAULK

Once fully cured, thoroughly caulk around the perimeter of the shelf to seal out water.

## STEP 5 - CLEANING

To clean your corner shelf, please use a damp sponge together with warm, soapy water or an ordinary household cleaner. Do NOT use ACID based products, liquid abrasive cleaners or harsh detergents/chemicals.

## CARE AND MAINTENANCE

- To clean, use an ordinary household cleaner. For best results, we recommend a liquid, non-abrasive cleaner.
- Liquid abrasive household cleaners should only be used after being tested in a small, inconspicuous area to ensure that no damage will result.
- Do NOT clean with scouring pads, steel wool or other abrasive implements or damage to the surface may result.
- Cleaners containing ammonia, bleach or other harsh chemicals should be wiped up shortly after application or damage to the surface may result.

## LIMITED WARRANTY

Dal-Tile provides a limited warranty on its products. The term of this warranty may be found at:

[www.daltile.com/information/warranty](http://www.daltile.com/information/warranty)