

# 24-Inch Wine Dispenser



DWS4000BB – Silver/Graphite Stainless

## Features & Benefits

- 4 bottle dispensing system
- 60 days preservation with argon gas
- Dual zone active cooling system
- Digital display with glass-touch control
- Custom dispensing volume
- Dual-pane glass with UV coating
- Spring piston bottle system
- Flush installation
- Reversible door
- Silver stainless or graphite finish

## Controls

CONTROL TYPE	Digital LCD Color Display
SABBATH MODE	Yes

## Features

GLASS DOOR	Dual-Pane UV-Resistant
REVERSIBLE DOOR	Yes
INTERIOR MATERIAL	Stainless steel
DISPENSING VOLUME	Free Pour, 2 oz. (Customizable), 4 oz. (Customizable)
LIGHTING	LED
BOTTLE INDICATOR	Yes
AUTOMATIC ELECTRONIC DOOR LOCK	Yes
CHILD LOCK	Yes
DOOR ALARM	Visual Icon Only

## Refrigerator

CAPACITY (BOTTLES)	4
ZONES	2
TEMPERATURE RANGE	Left: 44°F to 72°F Right: 59°F to 72°F
PRESERVATION	Argon Gas
REFRIGERANT	R600a

## Weights & Dimensions

NET WEIGHT (LBS.)	85
SHIPPING WEIGHT (LBS.)	104
PRODUCT DIMENSIONS (W X H X D IN INCHES)	23 ¾ x 24 x 15 ¾
STANDARD CUTOUT REQUIRED (W X H X D IN INCHES)	22 ⅞ x 24 x 18 ¾
FLUSH CUTOUT REQUIRED (W X H X D IN INCHES)	23 ¾ x 24 ¼ x 18 ¾

## Technical Details

ELECTRICAL REQUIREMENTS	120V, 60 Hz, 15A
-------------------------	------------------

## Warranty

FULL COVERAGE	2 Years
---------------	---------

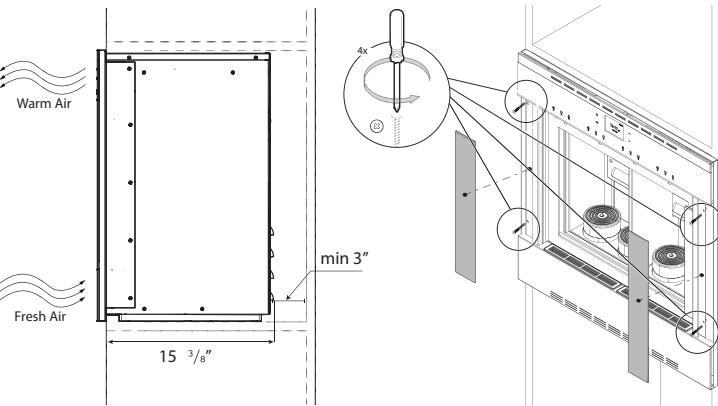
## Accessories (Required)

AWS4000GP	3 Argon Gas Canisters, 8 Pickup Tubes
-----------	---------------------------------------

# 24-Inch Wine Dispenser

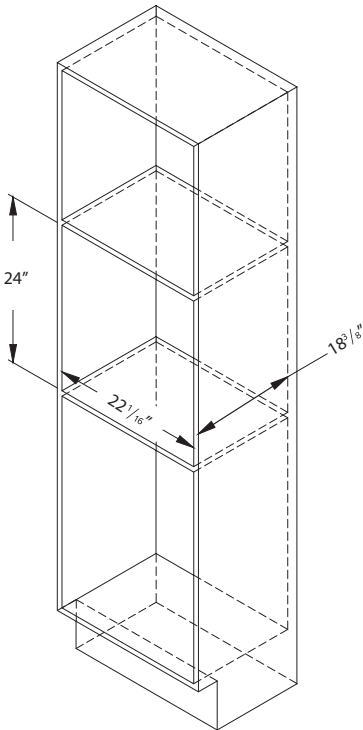


## Standard Installation

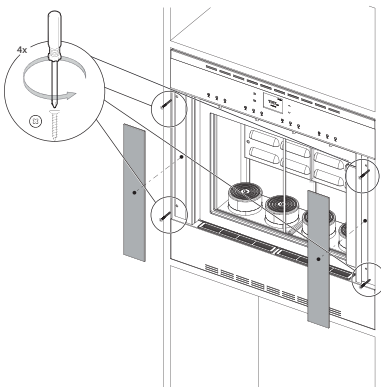


- A. Insert 4 #3.5mm x 30mm screws in the predrilled holes
- B. Attach the glass covers

ALL CABINET TOLERANCES: +1/16" (+1.6 MM/-0 MM)  
UNLESS OTHERWISE STATED.



## Flush Installation



- A. Insert 4 #3.5mm x 30mm screws in the predrilled holes
- B. Attach the glass covers

ALL CABINET TOLERANCES: +1/16" (+1.6 MM/-0 MM)  
UNLESS OTHERWISE STATED.

