



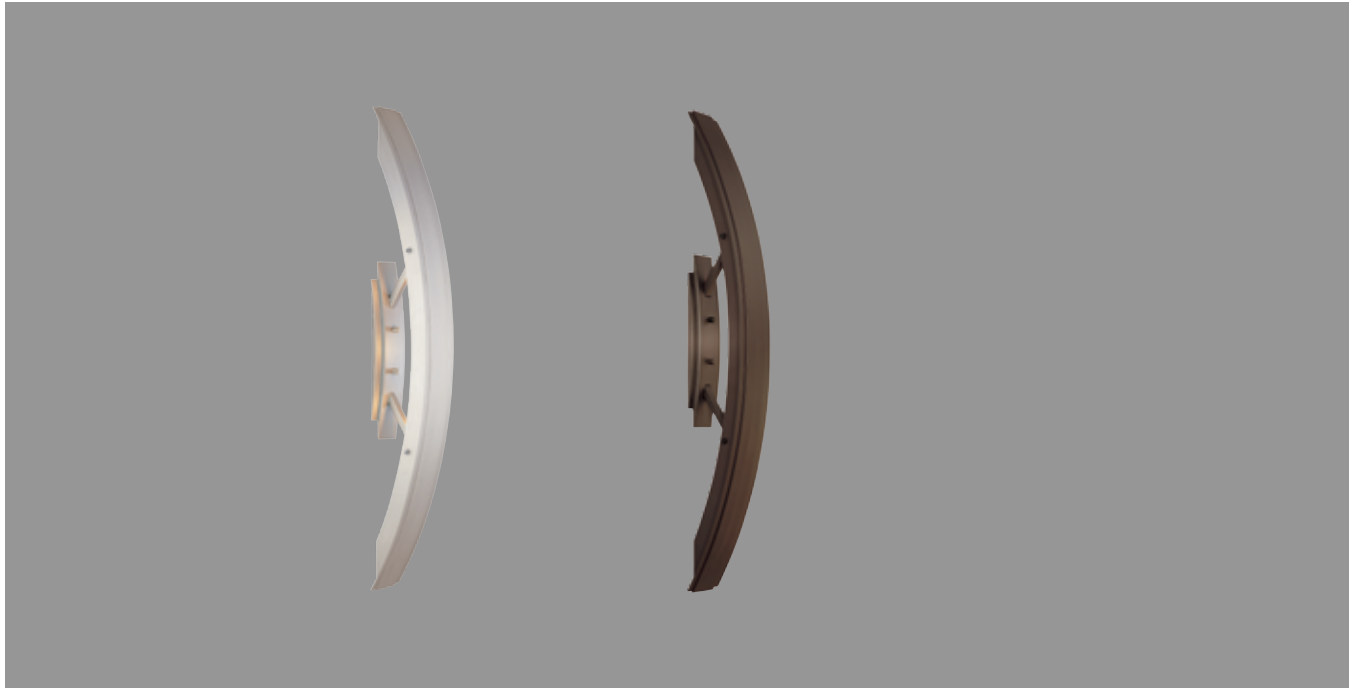
A Division of Troy-CSL Lighting, Inc.

ARCHITECTURAL

Project _____

Fixture Type _____

ARCH



ARCH

SS1027-SA	Satin Aluminum		
SS1027-BZ	Bronze		
Lamp*	5 - 10W Xenon	Festoon	12V
Dims	24 1/4" H x 2 1/4" W x 3 1/2" P	ADA	
	* lamp included		



- Aluminum body
- Satin Aluminum and Bronze finishes
- 5 - 10W 12V Xenon lamps
- Transformer included
- Damp-location listed
- Wall mount

