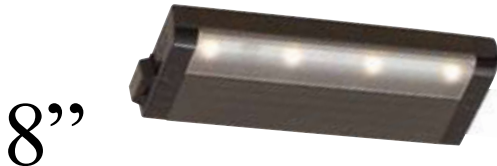


Project _____
 Fixture Type _____

ULTRA-EFFICIENT 120V LED TASK LIGHTING

Dimensions	Diodes	Watts	White-WT	Bronze-BZ	Satin aluminum - SA
8" L x 3" W x 3/4" H	4	6	ECL-8-WT-D-1	ECL-8-BZ-D-1	ECL-8-SA-D-1



SPECIFICATIONS:

Construction: Extruded aluminum body with molded plastic end caps

Finish: Options include White, Bronze & Satin Aluminum

Lens: Frosted acrylic lens specially formulated for LED use

Lamps: High output (>60 lumens per watt) 1W LEDs available in 2900K +/- 100 color temperature. Long-life, low maintenance: 50,000 hour lamp life @ 70% lumen maintenance. There are 4 diodes for every 8" circuit board, 8" fixture has 1 board (4 diodes), 16" fixture has 2 boards (8 diodes) & 24" fixture has 3 boards (12 diodes).

Electrical: Integrated 120V driver that allows for 120V connection by either cord & plug or hardwire (using EWM-1, EWM-2 or EWM-3) with no additional transformers or drivers.

Dimming: Dimmable with an ELV dimmer, not compatible with Lutron Maestro and Radio Ra2

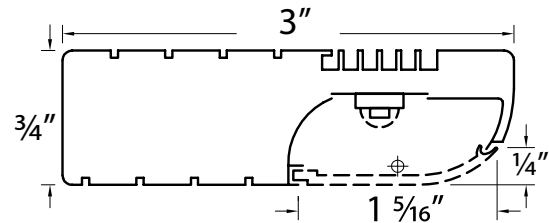
Installation: Eco-Counter is easy to install with captive screws pre-started in the end caps. The fixture utilizes CSL's SpeedLink system that allows for a plug-in or hardwire (using hardwire modules) installation as well as the ability to link fixtures together on a single 120V circuit up to 24 fixture (any size) by either butting fixture end to end or using SpeedLink connectors (QL-10 or QL-18).

Listing: UL and cUL task light listing for portable and hardwire installation

Warranty: Eco-Counter fixtures have a 3 year warranty on the driver & led chips from time of purchase.

FEATURES & BENEFITS

- Energy efficient LED system: 85% energy saving over equivalent incandescent task lighting fixtures.
- Long-life, low maintenance: 50,000 hour lamp life @ 70% lumen maintenance
- Warm White 2,900°K
- Special acrylic lens formulated for LED use
- Integrated 120V system - no external remote transformers or drivers
- Low Profile - the 3/4" height makes it nearly invisible upon installation
- Easy installation - captive screws and Speedlink™ technology (hardwire, portable, linkable) make for quick installation
- No UV or infrared energy, objects will not discolor or fade over time
- Cool operating temperature
- Speedlink system links a maximum of 24 units
- On / Off switch



ORDERING INFORMATION

Product Number	Finish	Accessories
ECL-8-XX-D-1	WT (White)	EWM-1 (WT/BZ/SA) Hard wire module w/ master switch
ECL-16-XX-D-1	BZ (Bronze)	EWM-2 (WT/BZ/SA) Hard wire module
ECL-24-XX-D-1	SA (Satin Aluminum)	EWM-3 (WT/BZ/SA) Hard wire module dual knockouts
		PL96 (WT/BK) Cord and plug
		QL-18 (WT/BK) 18" linking cord
		QL-10 (WT/BK) 10" linking cord

EXAMPLE:
 ECL-16-WT-D
 EWM-2WT
 QL-18WT

Project _____
 Fixture Type _____

ULTRA-EFFICIENT 120V LED TASK LIGHTING

Hardwire Module

Required for hardwiring 8" unit. Romex connector included. The Wiring Module/Switch may be connected to the end of the Eco-Counter fixture or mounted in a more convenient location and connect to the fixture with a SpeedLink intelink cable. EWM-2 is a wiring module only for use with Romex or flex conduit.

White	Bronze	Satin Aluminum
EWM-1WT	EWM-1BZ	EWM-1SA
EWM-2WT	EWM-2BZ	EWM-2SA
EWM-3WT	EWM-3BZ	EWM-3SA



3" w x 6" L x ¾" H

EWM-1 Wiring Modlue/Switch

controls multiple units from one switch, when installed at beginning of run



3" w x 3½" L x ¾" H

EWM-2 Wiring Module



EWM-3 Dual Knockout Wiring Module



Portable 8' Cord
 Plug, Back or White

Desc.	Black	White
8" plug in	PL-96 BK	Black
8" plug in	PL-96 WT	White



SpeedLink Interlink Cables
 Available in 10" and 18" lengths, Black or White

Desc.	Black	White
10"	QL-10 BK	QL-10 WT
18"	QL-18 BK	QL-18 WT

AVERAGE RATED LAMP LIFE

