

CRYSTORAMA

1958

95 Cantiague Rock Road, Westbury NY 11590

ph:516.931.9090 fax:516.931.1254

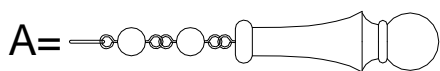
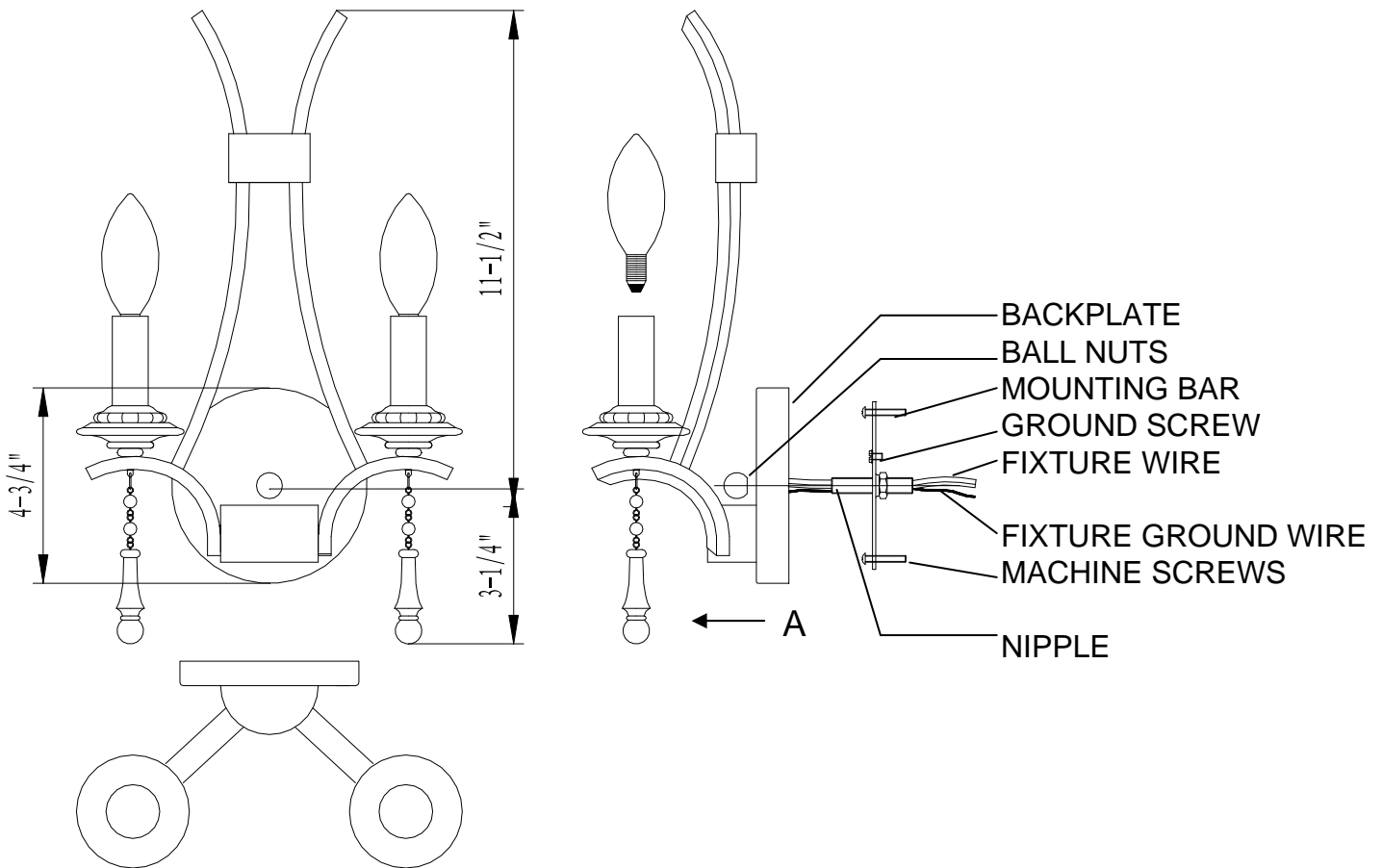
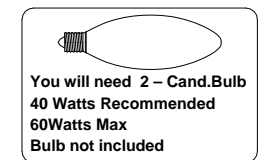
info@crystorama.com www.crystorama.com

MODEL#:9352

ASSEMBLY AND DRESSING INSTRUCTIONS



All electrical components must be installed by a licensed electrician in accordance with the National Electric Code and the appropriate local electrical codes.



(2X8mm Ball+1X58mm Resin Drops) *2pc

2011-12-15