

CRYSTORAMA

1958

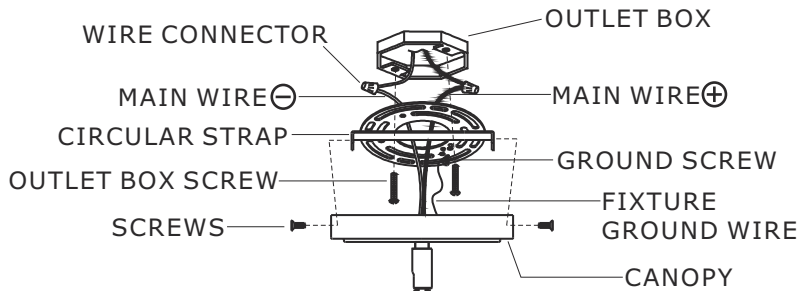
95 Cantiague Rock Road, Westbury, NY 11590 • toll free: 1.800.888.4470 fax: 516.931.1254 • info@crystorama.com • www.crystorama.com

MODEL#: 290-DB ASSEMBLY AND DRESSING INSTRUCTIONS



⚠ WARNING: This product can expose you to Lead which is known to the state of California to cause cancer and/or birth defects or reproductive harm. For more information go to www.P65Warnings.ca.gov

All electrical components must be installed by a licensed electrician in accordance with the National Electric Code and the appropriate local electrical codes.



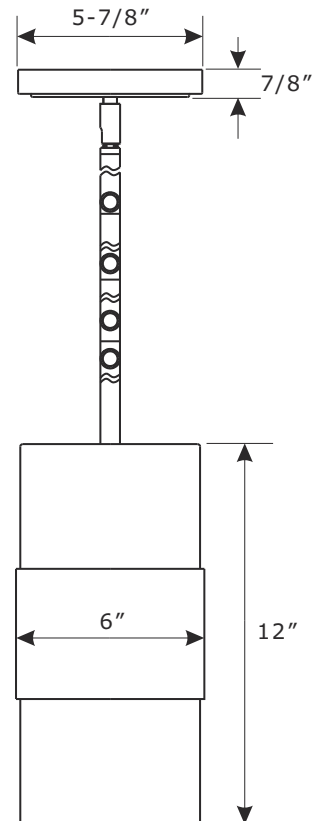
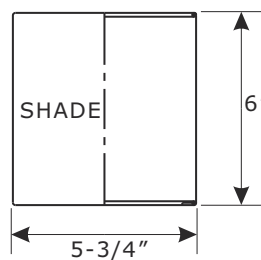
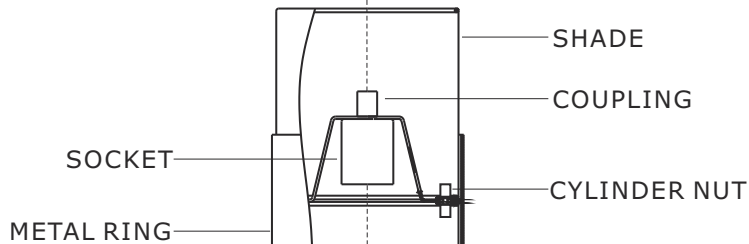
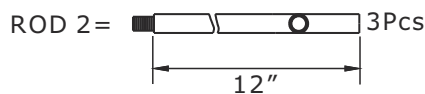
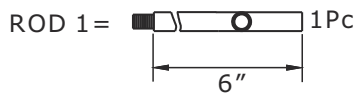
SWIVEL

ROD 1

ROD 2

ROD 2

ROD 2



You will need 1 Medium A19 bulb, 40 Watts recommended 60 Watts max. Bulb not included.
USE LED BULBS FOR EXTENDED USE