

CRYST RAMA



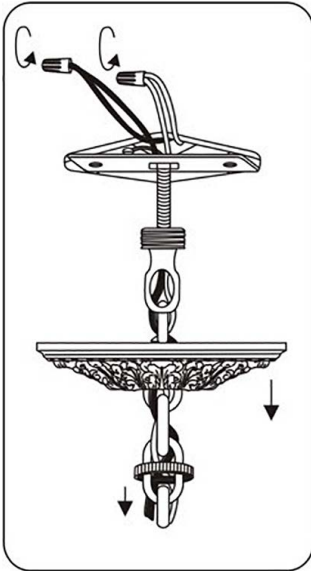
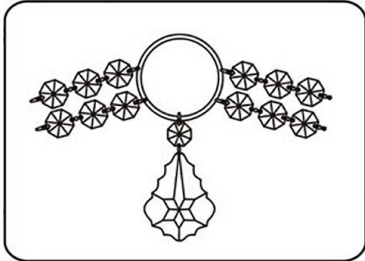
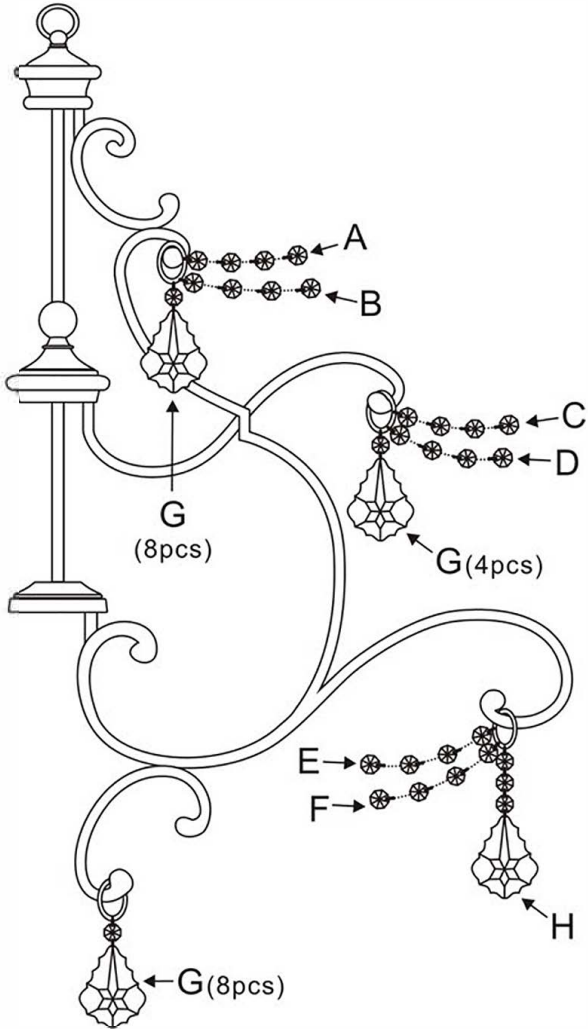
1958

95 Cantiague Rock Road, Westbury NY 11590
 ph:516.931.9090 fax: 516. 931.1254
 info@crystorama.com www.crystorama.com

MODEL#:7512 ASSEMBLY AND DRESSING INSTRUCTIONS



WARNING:
 All electrical components must be installed by a licensed electrician in accordance with the National Electric Code and the appropriate local electrical codes.



- A= 6 Jewels Strands * 8pcs
- B= 8 Jewels Strands * 8pcs
- C= 25 Jewels Strands * 4pcs
- D= 29 Jewels Strands * 4pcs
- E= 20 Jewels Strands * 8pcs
- F= 23 Jewels Strands * 8pcs
- G= 20/75-3" -GTS * 20pcs
- H= (20/75-3"+3 Jewels-GT-MWP) * 8pcs

