

Riata®

A classic showpiece, the Riata fan is an attractive addition to your home.



Pewter Riata with 54" Premier Distressed Oak Blades

Model-Finish **RT52PT**
 Blade-Finish **B554PD-OAK**
 Light-Finish **Not Shown**

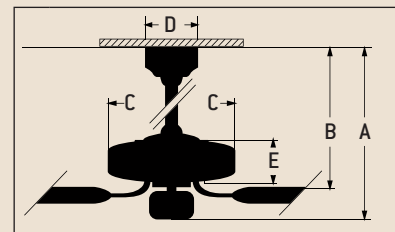
Features

- Heavy-Duty, 3 Speed Reversible Motor
- 2" and 6" Downrods *(Included)*
- Limited Lifetime Warranty
- Blades Sold Separately
- Light Kit Adaptable *(Optional)*
- Both TCS Controls Available *(Optional)*

Specs

- Blade Sweep Opt. 44", 52", 54", 56"
- Number of Blades 5
- Blade Pitch 14°
- Motor Size (MM) 188 x 15
- AMPS (HI Speed) 0.7
- Watts (HI Speed) 70
- RPM (HI-MED-LOW) 210-120-78
- Shipping Wt. (lbs.) 28.79
- CU. FT. in Carton 2.05
- Airflow* 5,994
(Cubic Feet Per Minute)
- Electricity Use* 70 Watts
- Airflow Efficiency* 86
(Cubic Feet Per Minute Per Watt)

Ceiling Drop Dimensions



- A: 2" DR - 12.5" B: 2" DR - 7.0"
- A: 6" DR - 16.5" B: 6" DR - 11.0"
- C: 13.0" D: 6.0"
- E: 5.5"

DR: Downrod

*Compare: 36" to 48" ceiling fans have airflow efficiencies ranging from approximately 71 to 86 cubic feet per minute per watt at high speed.

*Compare: 49" to 60" ceiling fans have airflow efficiencies ranging from approximately 51 to 176 cubic feet per minute per watt at high speed.

Popular Combinations



Aged Bronze Riata with 54" Premier Distressed Teak Blades

Model-Finish **RT52AG**
 Blade-Finish **B554PD-TK7**
 Light-Finish **Not Shown**



Pewter Riata with 56" Custom Carved Classic Ebony Blades

Model-Finish **RT52PT**
 Blade-Finish **B556C-SB4**
 Light-Finish **Not Shown**



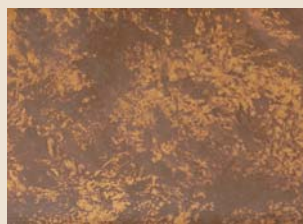
Burnt Sienna Riata with 54" Premier Distressed Walnut Blades

Model-Finish **RT52BU**
 Blade-Finish **B554PD-WAL**
 Light-Finish **LK35-BU/106**

Available Finishes



AG
Aged Bronze



BU
Burnt Sienna



PT
Pewter

Blade Options

Type 1 Blades
(see page 188)



Type 2 Blades
(see page 192)



Light Kit Options

Bowl Light Kits
(see page 204)



Complete Light Kits
(see page 208)



Customize Your Own
(see pages 209/211)



Remotes



TCS Remote Control
(Optional)
RT-TCS-(Finish)



TCS-PLUS Wall Control
(Optional)
RT-TCSPLUS-(Finish)