

Chamberlain®

The Chamberlain fan has a rustic charm, as well as consummate design.



Aged Bronze Chamberlain with 56" Custom Carved Chamberlain Pecan Blades and Bowl Light Kit

Model-Finish **CH52AG**
 Blade-Finish **B556C-CH2**
 Light-Finish **LK366-AG**

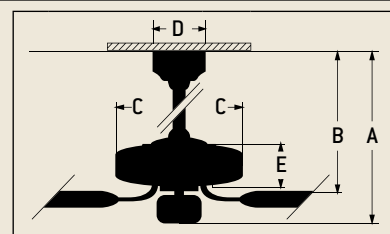
Features

- Heavy-Duty, 3 Speed Reversible Motor
- 6" Downrod *(Included)*
- Limited Lifetime Warranty
- Blades Sold Separately
- Indirect Uplight *(4-25W Candelabra Bulbs Included)*
- Light Kit Adaptable *(Optional)*
- Both TCS Controls Available *(Optional)*

Specs

■ Blade Sweep Opt.	44", 52", 54", 56"
■ Number of Blades	5
■ Blade Pitch	14°
■ Motor Size (MM)	188 x 15
■ AMPS (HI Speed)	0.62
■ Watts (HI Speed)	71
■ RPM (HI-MED-LOW)	210-120-78
■ Shipping Wt. (lbs.)	28.2
■ CU. FT. in Carton	2.39
■ Airflow* <i>(Cubic Feet Per Minute)</i>	6,227
■ Electricity Use*	71 Watts
■ Airflow Efficiency* <i>(Cubic Feet Per Minute Per Watt)</i>	88

Ceiling Drop Dimensions



A: 2" DR - 13.5"	B: 2" DR - 9.0"
A: 6" DR - 17.5"	B: 6" DR - 13.0"
C: 13.5"	D: 6.25"
E: 7.0"	

DR: Downrod

*Compare: 36" to 48" ceiling fans have airflow efficiencies ranging from approximately 71 to 86 cubic feet per minute per watt at high speed.

*Compare: 49" to 60" ceiling fans have airflow efficiencies ranging from approximately 51 to 176 cubic feet per minute per watt at high speed.

Popular Combinations



Burnt Sienna Chamberlain with 52" Custom Wood Washed Walnut Birch Blades

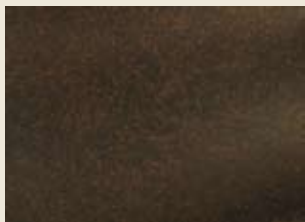
Model-Finish **CH52BU**
 Blade-Finish **B552S-WWB**
 Light-Finish **Not Shown**



Saddle Leather Chamberlain with 52" Custom Wood Washed Light Oak Blades

Model-Finish **CH52SL**
 Blade-Finish **B552S-WLO**
 Light-Finish **Not Shown**

Available Finishes



AG
Aged Bronze



BU
Burnt Sienna



SL
Saddle Leather

Blade Options

Type 1 Blades
(see page 188)



Type 2 Blades
(see page 192)



Light Kit Options

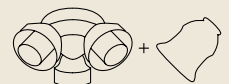
Bowl Light Kits
(see page 204)



Complete Light Kits
(see page 208)



Customize Your Own
(see pages 209/211)



Remotes



TCS Remote Control
(Optional)
CH-TCS-(Finish)



TCS-PLUS Wall Control
(Optional)
CH-TCSPLUS-(Finish)