

**FEATURES**

- Matches the AWN Series in appearance
- Clear acrylic prismatic diffuser. Hinges from either side. Flat bottom and vertical sides (shipped separately)
- Linear side prisms control visual brightness and direct light onto adjacent ceiling area
- Injection molded white plastic decorative ends are removable for continuous row mounting. Joiner bands are provided
- Heavy gauge steel die formed housing with recessed embossments behind ballasts for cooler operation and longer life

**PROJECT INFORMATION**

Project Name \_\_\_\_\_

Type \_\_\_\_\_

Catalog No. \_\_\_\_\_

Date \_\_\_\_\_

**CONSTRUCTION**

Fixture shipped ready to assemble. Install sockets, and attach end caps in field. Lens assembly shipped separately.

**FINISH**

All parts pre-painted with high gloss baked white enamel, minimum reflectance 86%, applied over iron phosphate pre-treatment for maximum adhesion and rust resistance.

**BALLASTS**

Energy efficient ballasts are thermally protected, automatic resetting, Class P, high power factor, sound rated A. CEE NEMA Premium compliant.

**SHIELDING**

100% clear prismatic acrylic.

**ELECTRICAL**

Standard class "P," thermally protected, autoresetting HPF ballast, sound rated A. CEE NEMA Premium compliant. All ballast leads extend a minimum of 6" through access location. NEC/CEC-compliant ballast disconnect is standard.

**CERTIFICATION**

All luminaires are built to UL 1598 standards and bear appropriate UL and cUL or CSA labels. Damp location labeling is standard. Emergency-equipped fixtures labeled UL 924.

**ORDERING INFORMATION**

**EXAMPLE R04-232-EU**

RO		-		-		-		-	
MODEL	LENGTH	NO. OF LAMPS IN CROSS SECTION	LAMP TYPE	BALLAST	VOLTAGE	OPTIONS			
RO Corridor Wraparound	2 2' 4 4' 8 8'	1 One 2 Two	17 2', T8: 17 Watt 28 4', T5: 28 Watt 32 4', T8: 32, 30, 28 or 25 Watt 54 4', T5HO: 54 or 51 Watt	E Electronic T8, Instant Start (Std.) 4E 4-Lamp Electronic T8, Instant Start (Std.) EP Electronic T5 or T8, Programmed Start 4EP 4-Lamp Electronic T5 or T8, Programmed Start	U 120V-277V 347 347V	GLR Fast Blow Fuse EL Emergency Battery Pack PAF Paint After Fabrication			
<b>ACCESSORIES (ORDER SEPARATELY)</b>									
ITB4 T-Bar Hanger									
S18 18" Stem, Canopy									

## PHOTOMETRIC DATA

Test 10408 Test Date 4/2/93

### LUMINAIRE DATA

Luminaire	RO4-232-E 6" x 48" 2-Lamp with Wraparound Acrylic Prismatic Lens
Ballast	B232I120
Ballast Factor	0.88
Lamp	F32T8
Lumens per Lamp	2900
Watts	55
Shielding Angle	N/A
Spacing Criterion	0° = 1.26 90° = 1.38
Luminous Opening in Feet	Length: 4.00 Width: 0.50 Height: 0.00

### ZONAL LUMEN SUMMARY

Zone	Lumens	% Lamp	% Fixt.
0-30	1026	17.7	22.0
0-40	1701	29.3	36.5
0-60	2833	48.8	60.8
0-90	3774	65.1	81.0
90-120	650	11.2	13.9
90-130	758	13.1	16.3
90-150	862	14.9	18.5
90-180	887	15.3	19.0
0-180	4661	80.4	100.0

### ENERGY DATA

Total Luminaire Efficiency	80.4%
Luminaire Efficacy Rating (LER)	75
IESNA RP-1-1993 Compliance	Noncompliant
Comparative Yearly Lighting Energy Cost per 1000 Lumens	\$3.20 based on 3000 hrs. and \$0.08 per KWH

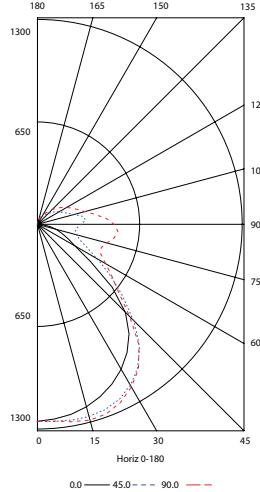
### COEFFICIENTS OF UTILIZATION (%)

RCR	RC	80				70				50				0
		RW	70	50	30	10	70	50	30	10	50	30	10	0
1	83	78	74	71	79	75	72	68	69	66	63	52		
2	75	68	63	58	72	65	60	56	60	56	52	43		
3	69	60	53	48	65	58	52	47	53	48	44	36		
4	63	53	46	41	60	51	45	40	47	42	38	31		
5	58	48	41	35	55	46	39	34	42	37	33	27		
6	53	43	36	31	51	41	35	30	38	33	29	24		
7	50	39	32	27	47	38	31	27	35	29	25	21		
8	46	36	29	24	44	34	28	24	32	27	23	19		
9	43	33	26	22	41	31	25	21	29	24	20	17		
10	40	30	24	20	39	29	23	19	27	22	18	16		

RCR = Room Cavity Ratio

RC = Effective Ceiling Reflectance RW = Wall Reflectance

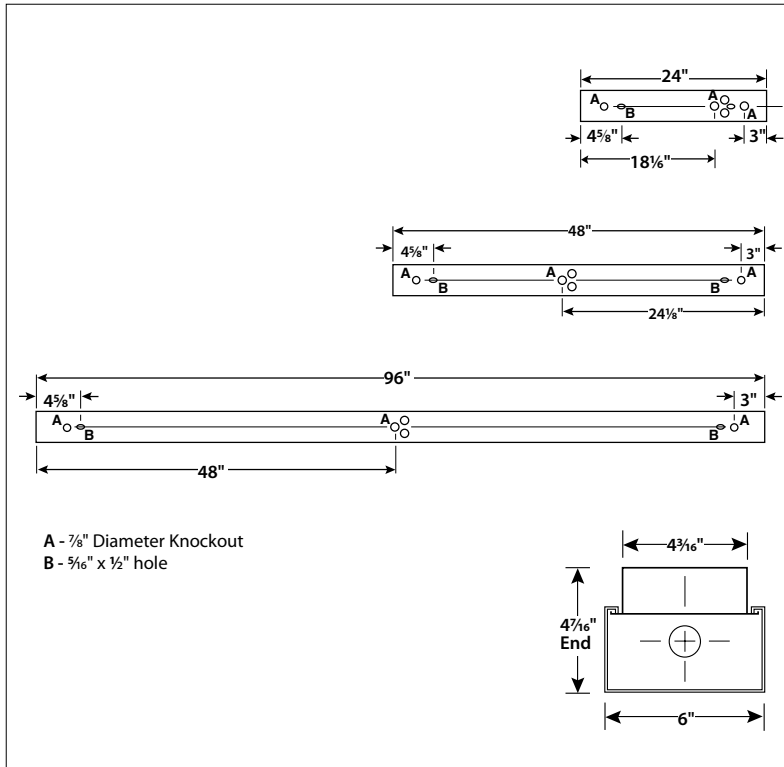
### INDOOR CANDELA PLOT



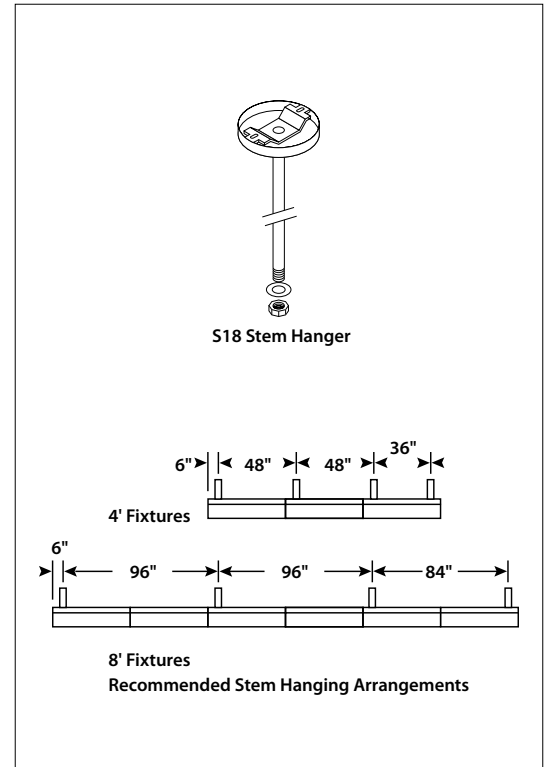
### AVG. LUMINANCE (Candela/Sq. M.)

Average Luminance Angle	0.0	22.5	45.0	67.5	90.0
	0	6701	6701	6701	6701
30	6581	6929	7308	7395	7383
40	6344	6759	7061	7089	7040
45	5998	6371	6546	6409	6302
50	5174	5677	5903	5618	5635
55	3875	4926	5283	5236	5423
60	3025	4144	4736	5188	5393
65	2738	3515	4432	5361	5642
70	2612	3273	4532	6027	6766
75	2620	3535	5323	8131	9462
80	2603	4432	7563	13172	15280
85	2655	7102	15500	27727	31618

### DIMENSIONAL DATA



### STEM MOUNTING



**NOTE:** All dimensions are in inches; dimensions and specifications are subject to change without notice. Please consult factory or check sample for verification.