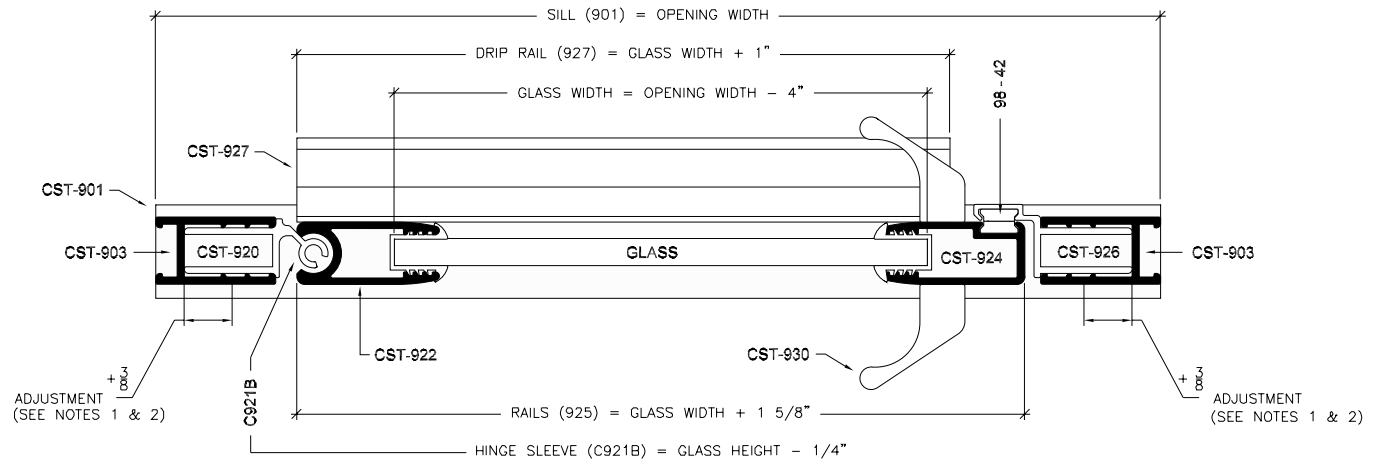


vertical cross section



horizontal cross section

NOTES:

1. FORMULAS ARE BASED ON A MINIMUM WIDTH OPENING. WHEN MEASURING OPENING WIDTHS, ALWAYS CHECK FOR OUT OF PLUMB WALL CONDITIONS.
2. STANDARD DOOR WIDTH ADJUSTMENT IS (+) 3/4 OF AN INCH. THE 3/4 INCH IS GAINED BY ADJUSTING STRIKE AND HINGE METALS (926 & 920) WITHIN THEIR RESPECTIVE WALL JAMBS (903) AS SHOWN IN HORIZONTAL CROSS VIEW.

Series

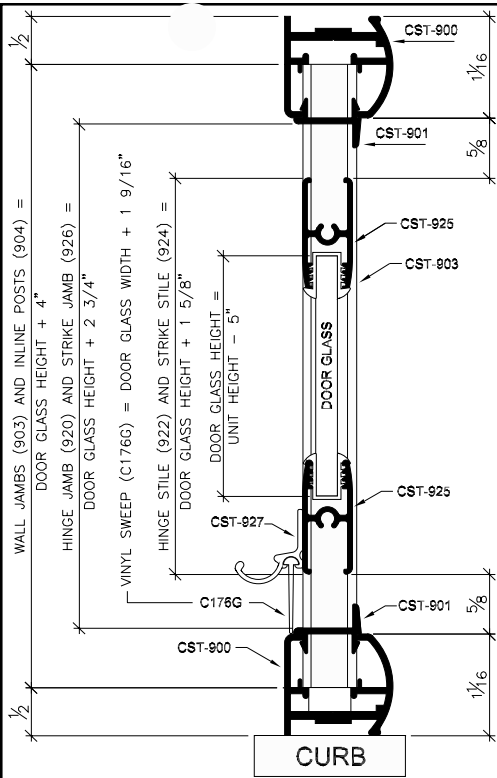
Unit Configuration

PARAGON

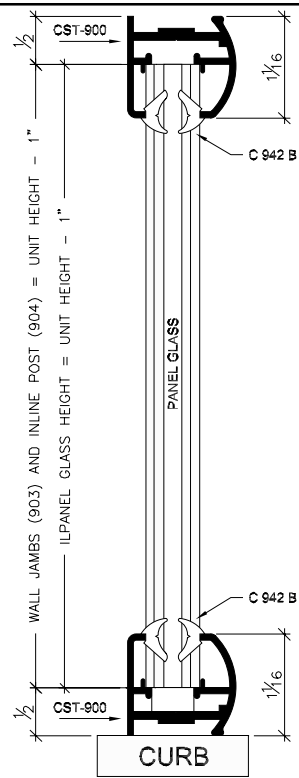
Framed Door



Coastal Industries Inc.



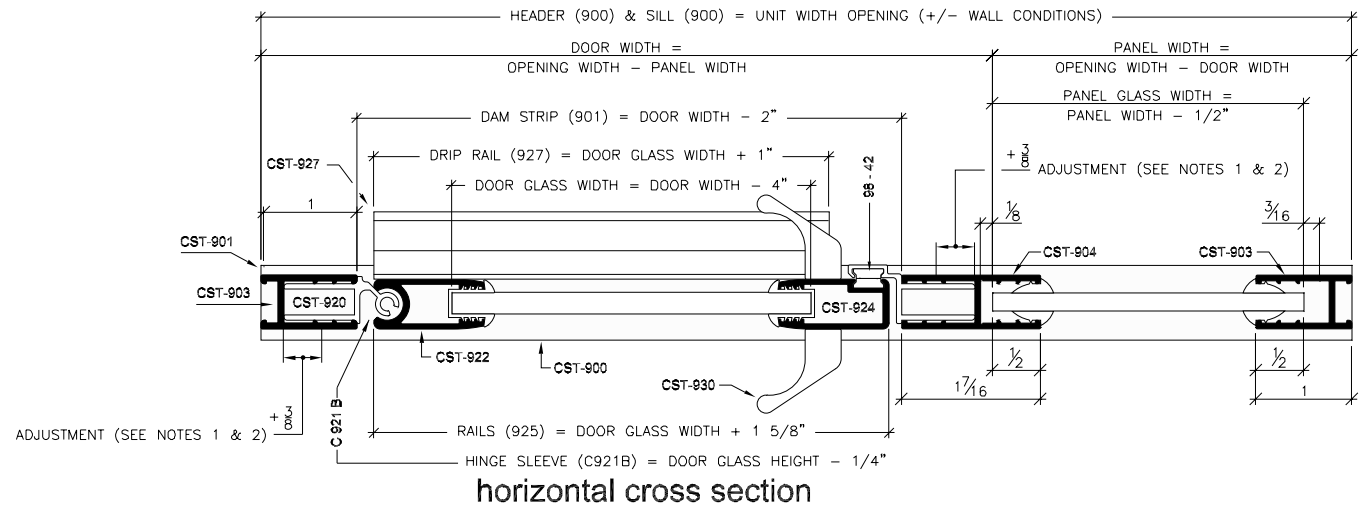
**Paragon Door**  
vertical cross section



**Inline Panel**  
vertical cross section

**NOTES:**

1. FORMULAS ARE BASED ON A MINIMUM WIDTH OPENING. WHEN MEASURING OPENING WIDTHS, ALWAYS CHECK FOR OUT OF PLUMB WALL CONDITIONS.
2. STANDARD DOOR WIDTH ADJUSTMENT IS (+) 3/4 OF AN INCH. THE 3/4 INCH IS GAINED BY ADJUSTING STRIKE AND HINGE METALS (926 & 920) WITHIN THEIR RESPECTIVE JAMBS (903 & 904) AS SHOWN IN HORIZONTAL CROSS VIEW.



**horizontal cross section**

Series

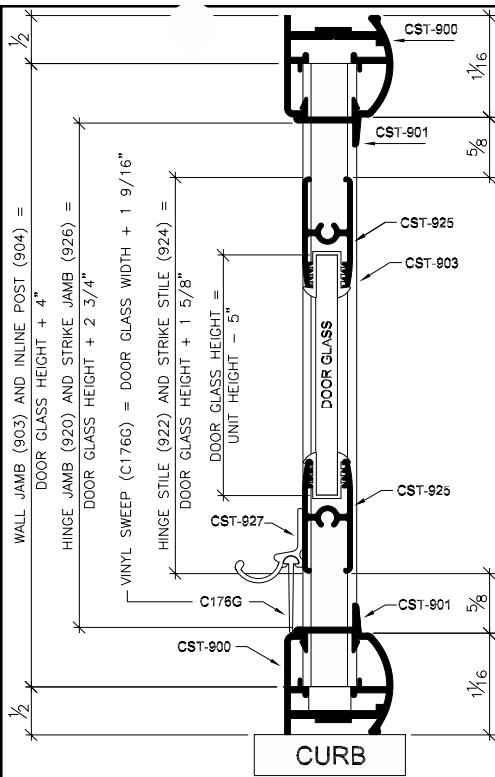
Unit Configuration

PARAGON

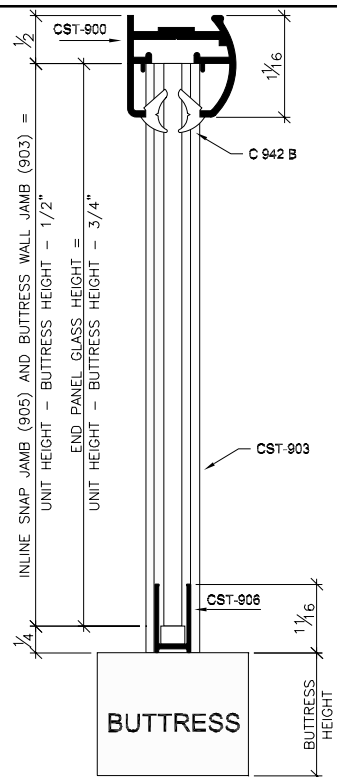
Door w/ 1 Inline Panel



**Coastal Industries Inc.**



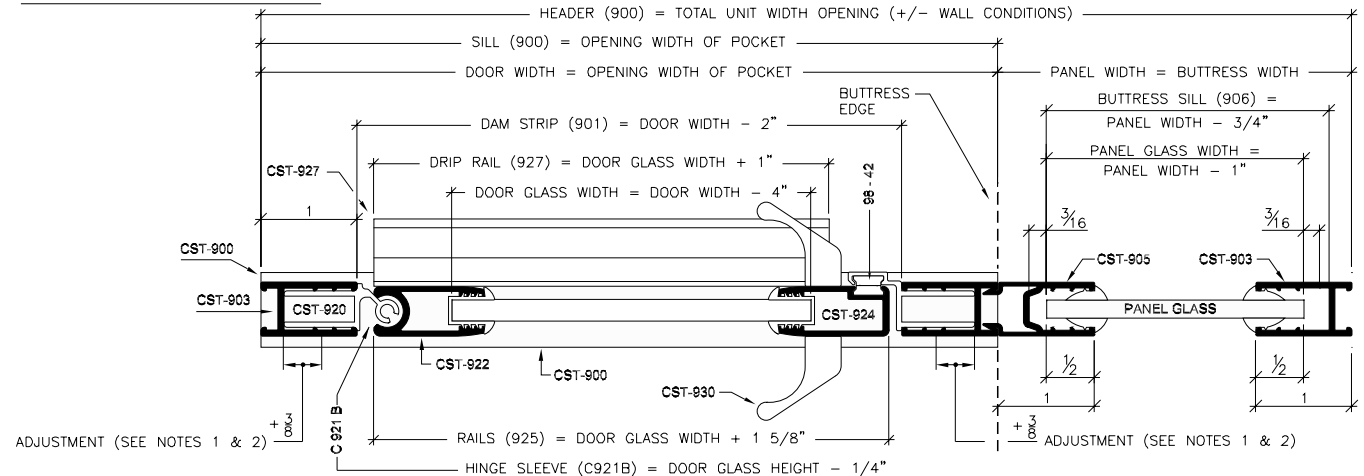
**Paragon Door  
vertical cross section**



**Inline Panel on Step-up  
vertical cross section**

**NOTES:**

1. FORMULAS ARE BASED ON A MINIMUM WIDTH OPENING. WHEN MEASURING OPENING WIDTHS, ALWAYS CHECK FOR OUT OF PLUMB WALL CONDITIONS.
2. STANDARD DOOR WIDTH ADJUSTMENT IS (+) 3/4 OF AN INCH. THE 3/4 INCH IS GAINED BY ADJUSTING STRIKE AND HINGE METALS (926 & 920) WITHIN THEIR RESPECTIVE JAMBS (903 & 904) AS SHOWN IN HORIZONTAL CROSS VIEW.



**horizontal cross section**

Series

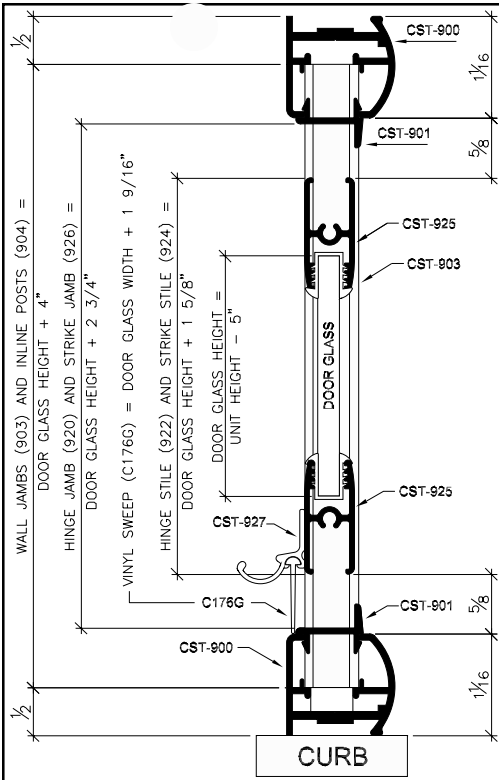
Unit Configuration

PARAGON

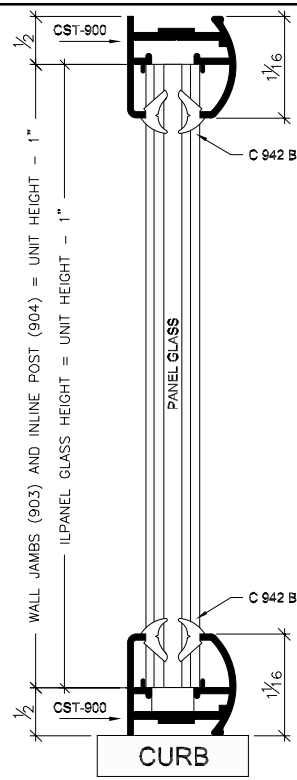
Door w/ 1 Inline  
(Inline panel on step-up)



**Coastal Industries Inc.**



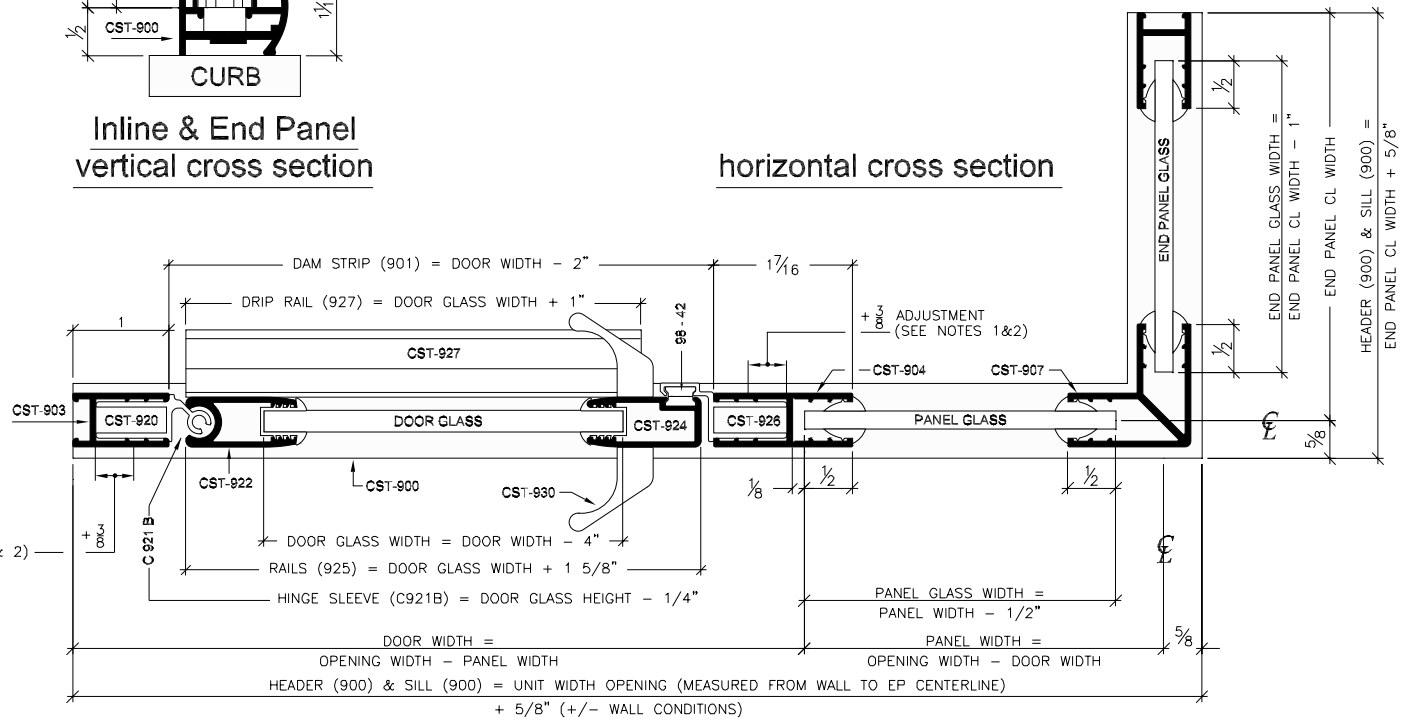
**Door vertical cross section**



**Inline & End Panel vertical cross section**

**NOTES:**

1. FORMULAS ARE BASED ON A MINIMUM WIDTH OPENING. WHEN MEASURING OPENING WIDTHS, ALWAYS CHECK FOR OUT OF PLUMB WALL CONDITIONS.
2. STANDARD DOOR WIDTH ADJUSTMENT IS (+)  $\frac{3}{4}$  OF AN INCH. THE  $\frac{3}{4}$  INCH IS GAINED BY ADJUSTING STRIKE AND HINGE METALS (926 & 920) WITHIN THEIR RESPECTIVE JAMBS (903 & 904) AS SHOWN IN HORIZONTAL CROSS VIEW.



**horizontal cross section**

Series

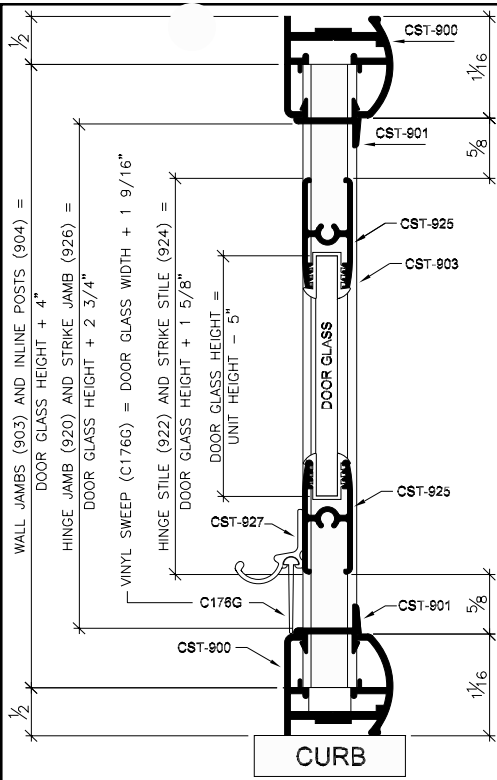
Unit Configuration

PARAGON

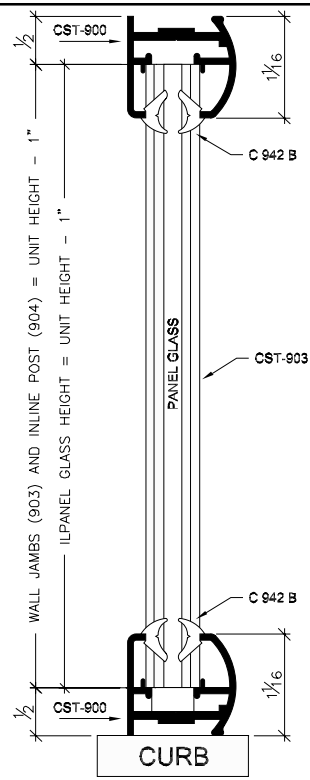
Door w/ 1 Inline & 1 End Panel



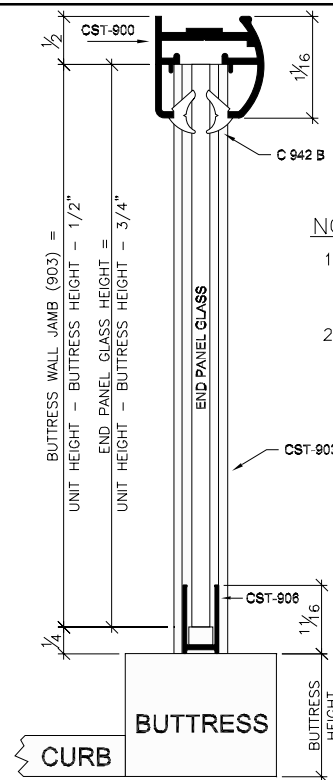
**Coastal Industries Inc.**



**Door vertical cross section**



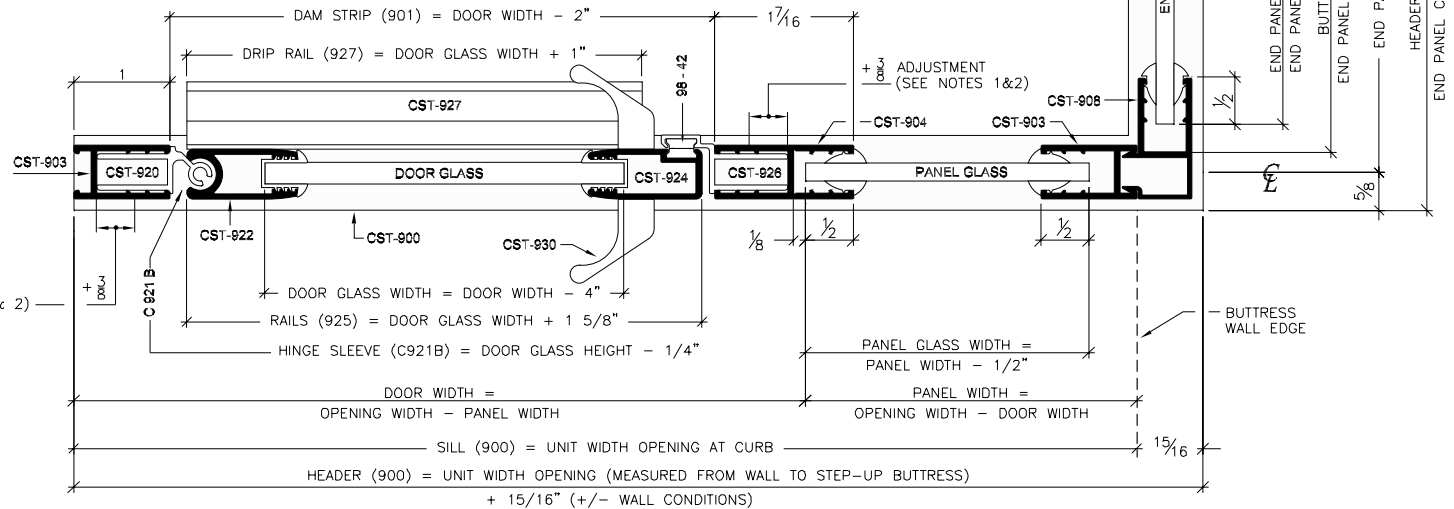
**Inline Panel vertical cross section**



**End Panel vertical cross section**

**NOTES:**

1. FORMULAS ARE BASED ON A MINIMUM WIDTH OPENING. WHEN MEASURING OPENING WIDTHS, ALWAYS CHECK FOR OUT OF PLUMB WALL CONDITIONS.
2. STANDARD DOOR WIDTH ADJUSTMENT IS (+) 3/4 OF AN INCH. THE 3/4 INCH IS GAINED BY ADJUSTING STRIKE AND HINGE METALS (926 & 920) WITHIN THEIR RESPECTIVE JAMBS (903 & 904) AS SHOWN IN HORIZONTAL CROSS VIEW.



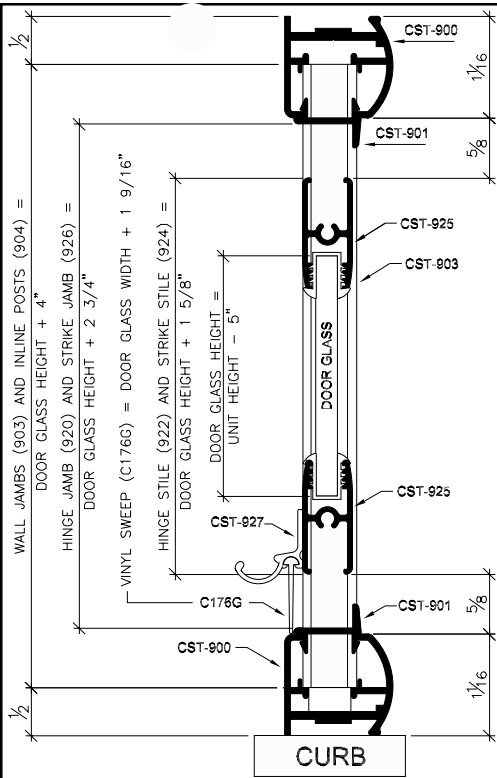
**horizontal cross section** →

ADJUSTMENT (SEE NOTES 1 & 2)

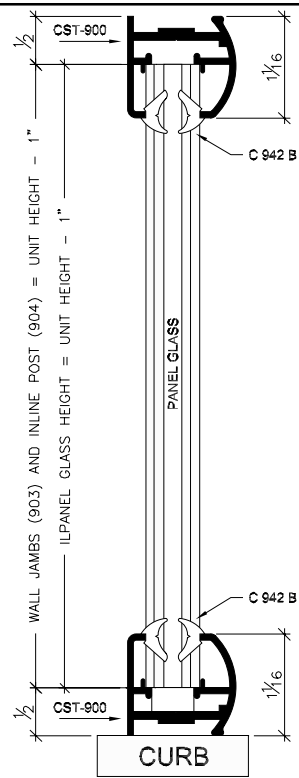
Series	Unit Configuration
PARAGON	Door w/ 1 Inline & 1 End Panel (end panel on step-up)



**Coastal Industries Inc.**



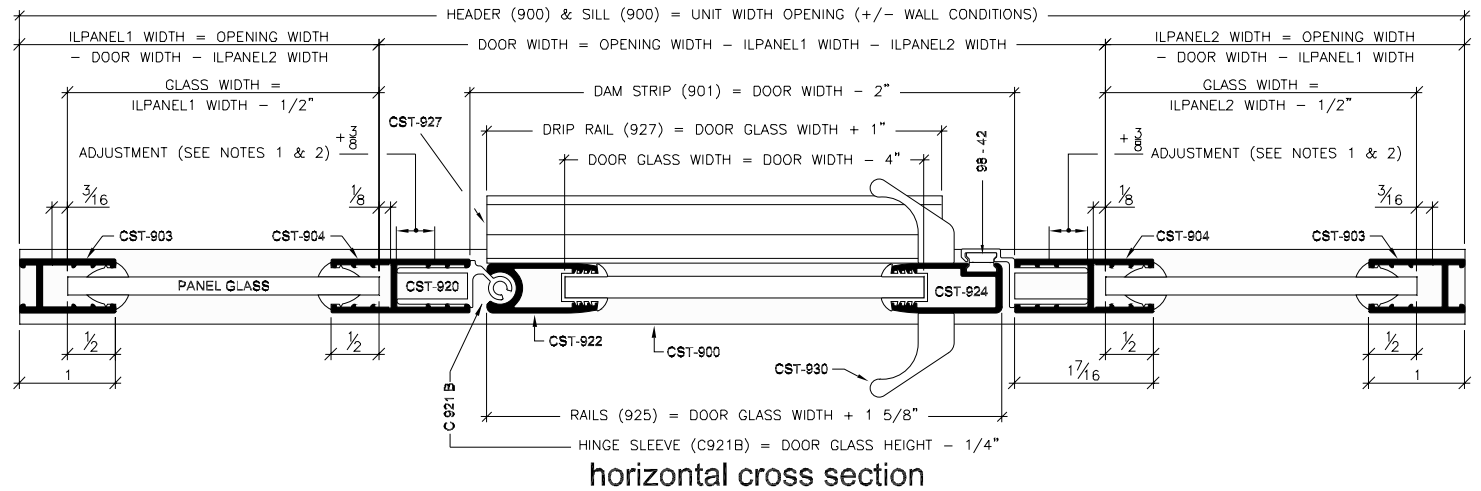
**Paragon Door**  
vertical cross section



**Inline Panels**  
vertical cross section

**NOTES:**

1. FORMULAS ARE BASED ON A MINIMUM WIDTH OPENING. WHEN MEASURING OPENING WIDTHS, ALWAYS CHECK FOR OUT OF PLUMB WALL CONDITIONS.
2. STANDARD DOOR WIDTH ADJUSTMENT IS (+) 3/4 OF AN INCH. THE 3/4 INCH IS GAINED BY ADJUSTING STRIKE AND HINGE METALS (926 & 920) WITHIN THEIR RESPECTIVE JAMBS (903 & 904) AS SHOWN IN HORIZONTAL CROSS VIEW.



**horizontal cross section**

Series

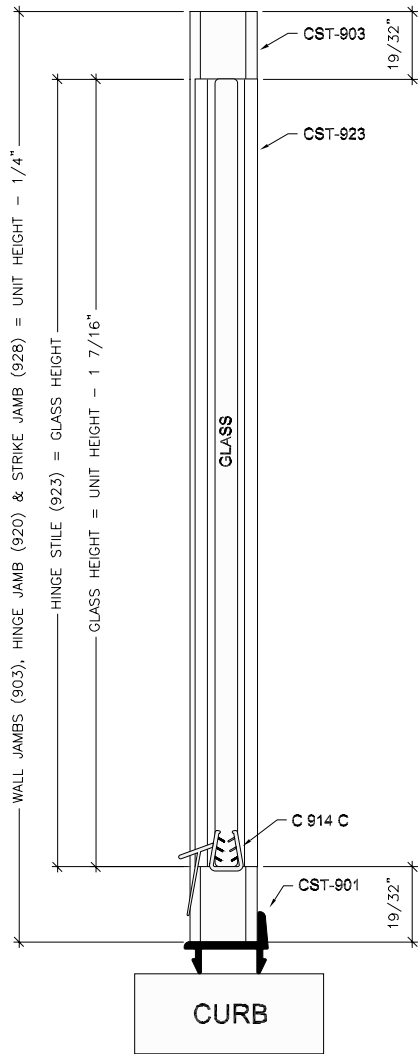
Unit Configuration

PARAGON

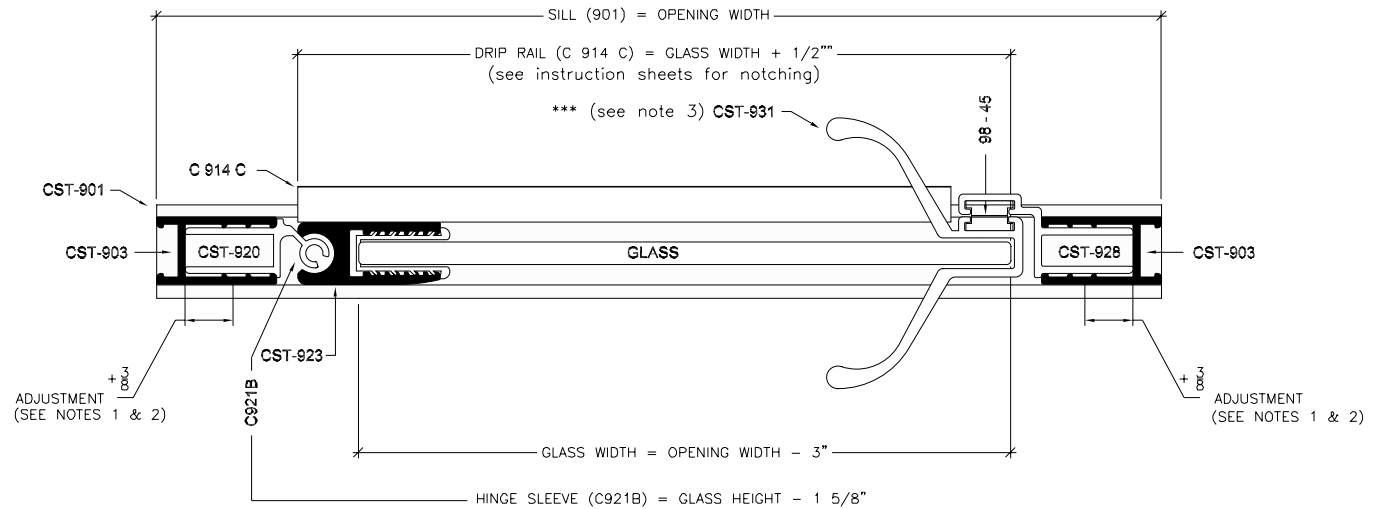
Door w/ 2 Inline Panels



**Coastal Industries Inc.**



vertical cross section



horizontal cross section

**NOTES:**

1. FORMULAS ARE BASED ON A MINIMUM WIDTH OPENING. WHEN MEASURING OPENING WIDTHS, ALWAYS CHECK FOR OUT OF PLUMB WALL CONDITIONS.
2. STANDARD DOOR WIDTH ADJUSTMENT IS (+) 3/4 OF AN INCH. THE 3/4 INCH IS GAINED BY ADJUSTING STRIKE AND HINGE METALS (926 & 920) WITHIN THEIR RESPECTIVE WALL JAMBS (903) AS SHOWN IN HORIZONTAL CROSS VIEW.
- \*\*\* 3. WHEN USING C-PULL HANDLES (TAB-BTB) IN LIEU OF CST-931 HANDLES, PLEASE REFER TO GLASS PANEL PROCESSING SHEET FOR HOLE SIZE AND LOCATIONS.

Series

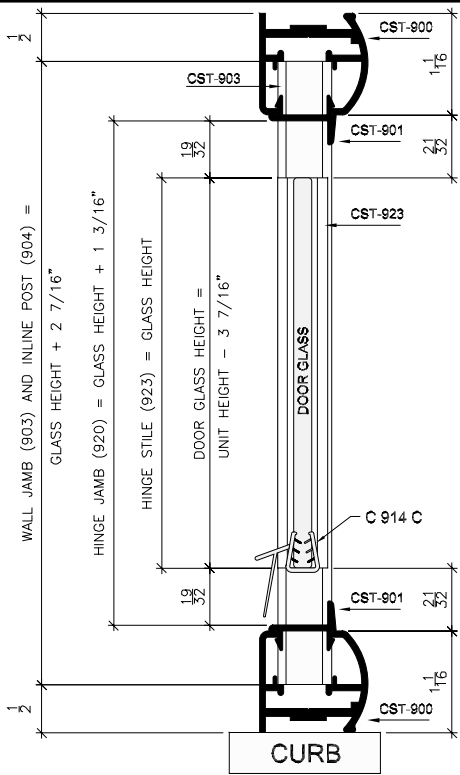
Unit Configuration

PARAGON

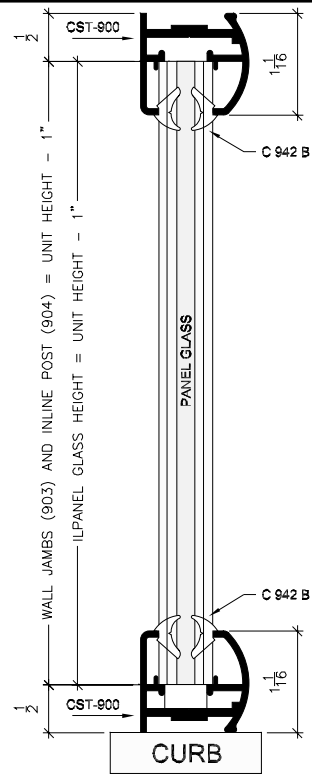
Frameless Door



**Coastal Industries Inc.**



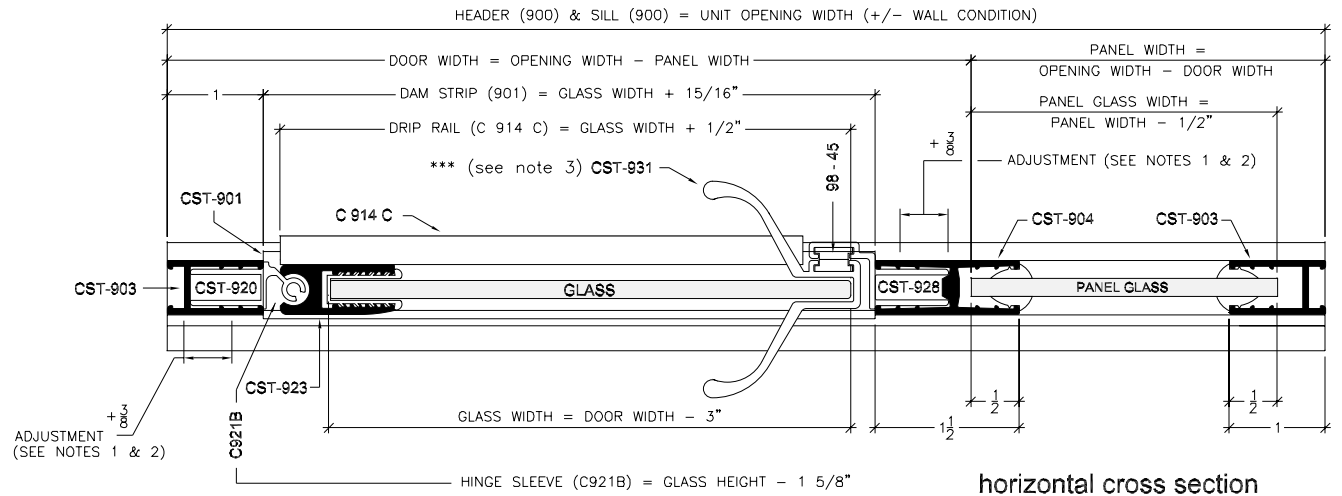
**Door Panel**  
vertical cross section



**Inline Panel**  
vertical cross section

**NOTES:**

1. FORMULAS ARE BASED ON A MINIMUM WIDTH OPENING. WHEN MEASURING OPENING WIDTHS, ALWAYS CHECK FOR OUT OF PLUMB WALL CONDITIONS.
2. STANDARD DOOR WIDTH ADJUSTMENT IS (+) 3/4 OF AN INCH. THE 3/4 INCH IS GAINED BY ADJUSTING STRIKE AND HINGE METALS (926 & 920) WITHIN THEIR RESPECTIVE WALL JAMBS (903) AS SHOWN IN HORIZONTAL CROSS VIEW.
- \*\*\* 3. WHEN USING C-PULL HANDLES (TA8-BTB) IN LIEU OF CST-931 HANDLES, PLEASE REFER TO GLASS PANEL PROCESSING SHEET FOR HOLE SIZE AND LOCATIONS.



**horizontal cross section**

Series

Unit Configuration

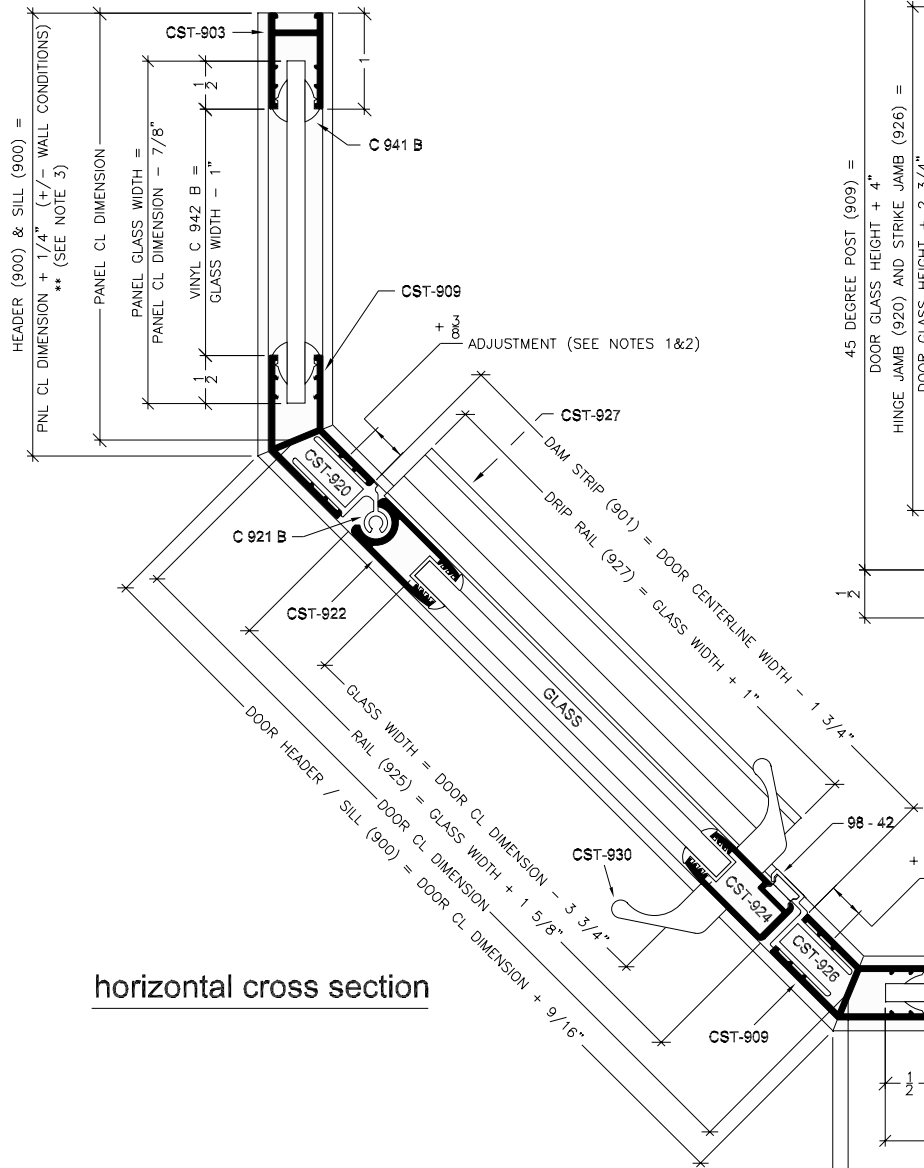
PARAGON

Frameless Door w/ 1 Inline Panel

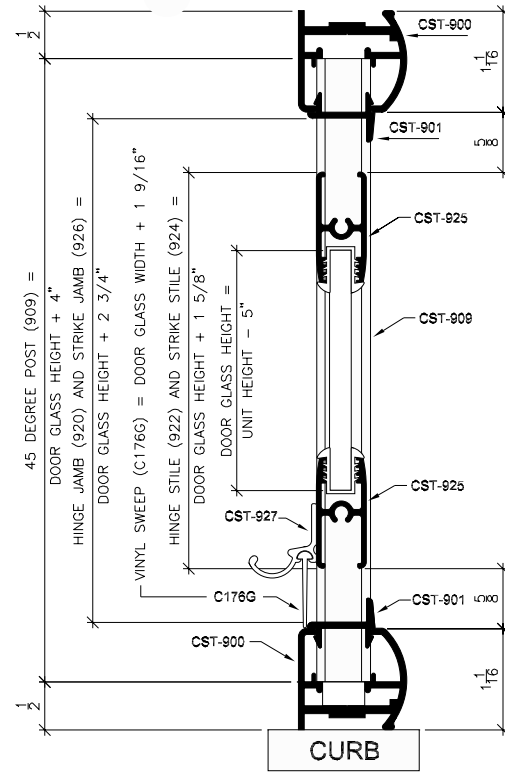


**Coastal Industries Inc.**

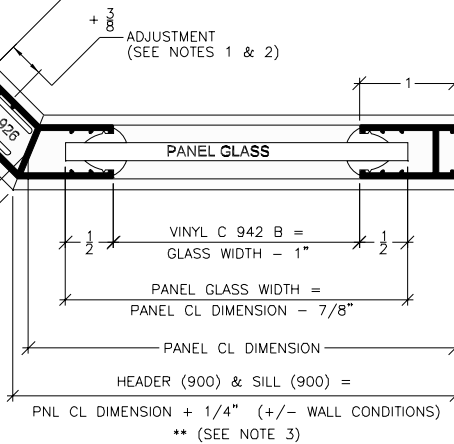




horizontal cross section

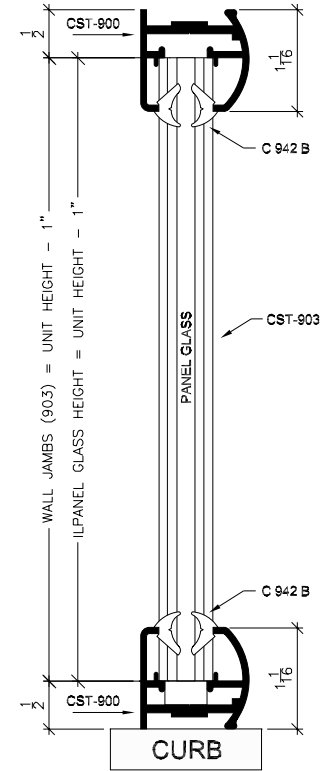


Paragon Door vertical cross section



NOTES:

1. FORMULAS ARE BASED ON A MINIMUM WIDTH OPENING. WHEN MEASURING OPENING WIDTHS, ALWAYS CHECK FOR OUT OF PLUMB WALL CONDITIONS.
2. STANDARD DOOR WIDTH ADJUSTMENT IS (+) 3/4 OF AN INCH. THE 3/4 INCH IS GAINED BY ADJUSTING STRIKE AND HINGE METALS (926 & 920) WITHIN THEIR RESPECTIVE JAMBS (909) AS SHOWN IN HORIZONTAL CROSS VIEW.
- \*\* 3. WHEN CUTTING HEADER AND SILL ANGLES, REMEMBER THAT PIECES ARE CUT AT 1/2 OF THE ANGLE DESIRED. (i.e. IF ANGLE IS 45°, THAN PIECES ARE CUT AT 22.5°)



Inline Panel vertical cross section

Series

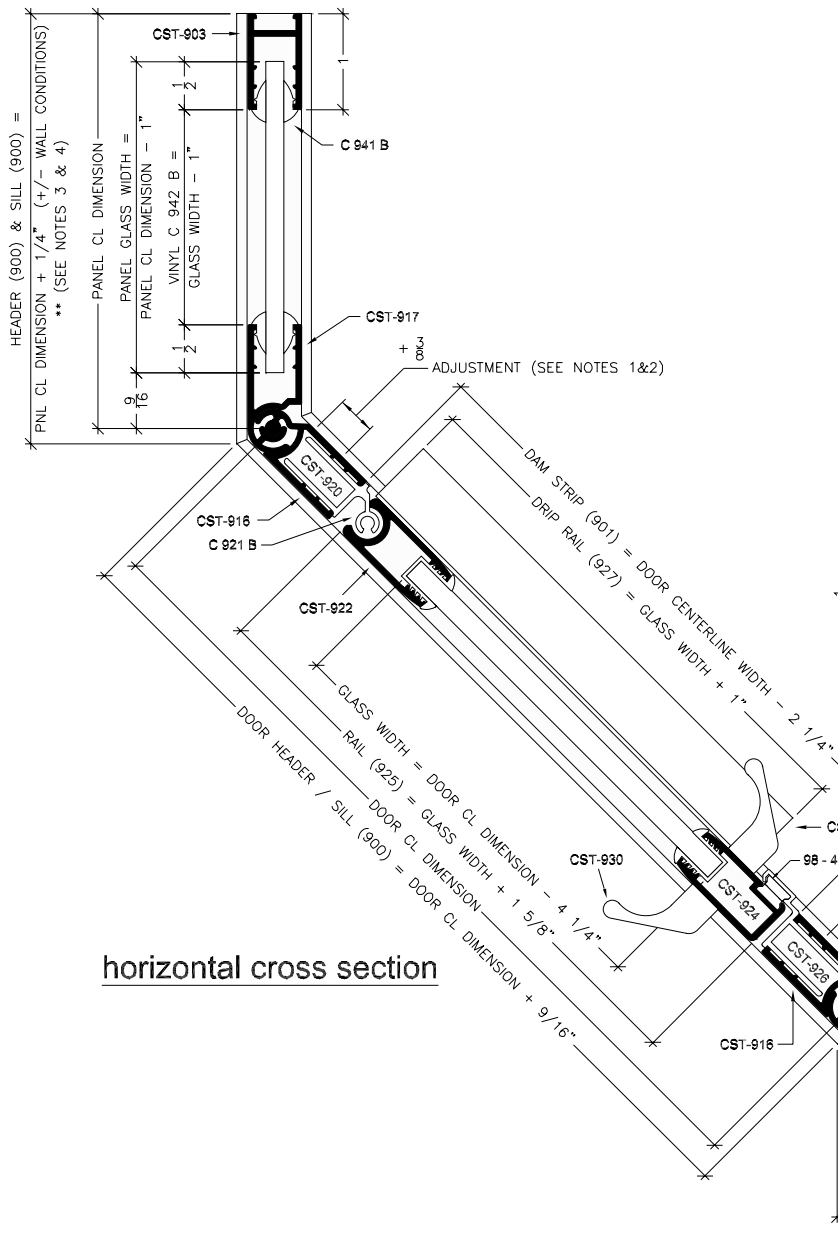
Unit Configuration

PARAGON

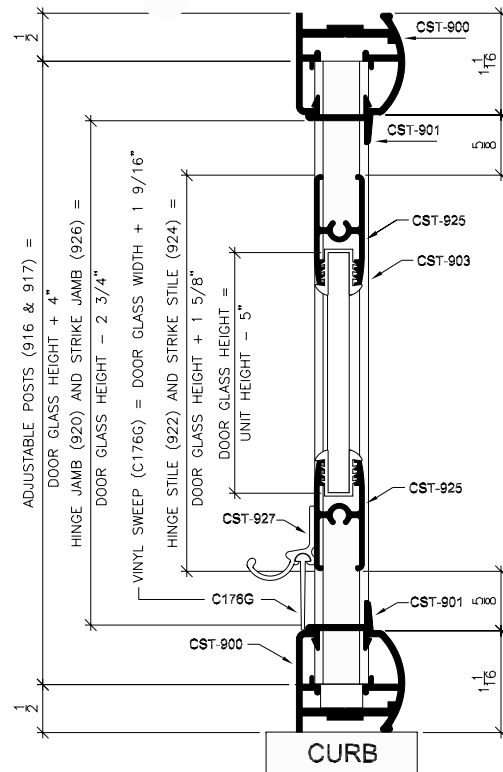
Neo Angle (fixed)



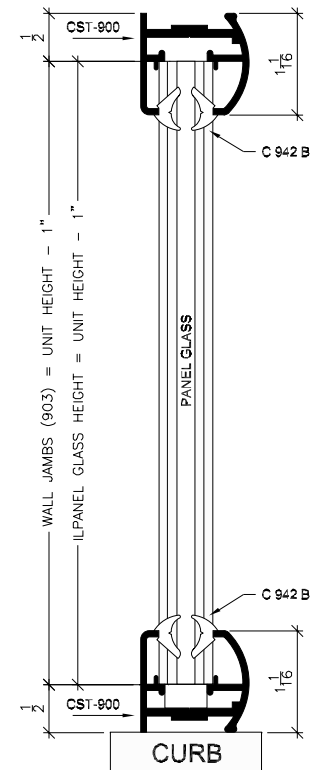
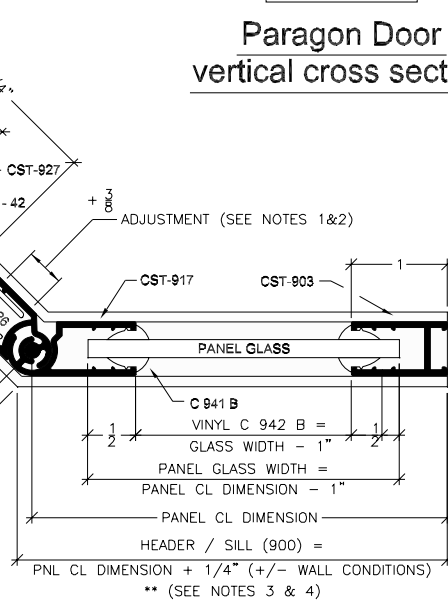
Coastal Industries Inc.



horizontal cross section



Paragon Door vertical cross section



Inline Panel vertical cross section

NOTES:

1. FORMULAS ARE BASED ON A MINIMUM WIDTH OPENING. WHEN MEASURING OPENING WIDTHS, ALWAYS CHECK FOR OUT OF PLUMB WALL CONDITIONS.
2. STANDARD DOOR WIDTH ADJUSTMENT IS (+) 3/4 OF AN INCH. THE 3/4 INCH IS GAINED BY ADJUSTING STRIKE AND HINGE METALS (926 & 920) WITHIN THEIR RESPECTIVE JAMBS (916) AS SHOWN IN HORIZONTAL CROSS VIEW.
- \*\* 3. CUT LENGTH SHOWN IS FOR A 45° ANGLE. IF THE ANGLE IS OTHER THAN A 45°, THE BUTT END OF METAL PIECES MIGHT HAVE TO BE TRIMMED SLIGHTLY FOR OPTIMUM FIT.
- \*\* 4. WHEN CUTTING HEADER AND SILL ANGLES, REMEMBER THAT PIECES ARE CUT AT 1/2 OF THE ANGLE DESIRED. (i.e. IF ANGLE IS 45°, THAN PIECES ARE CUT AT 22.5°)

Series

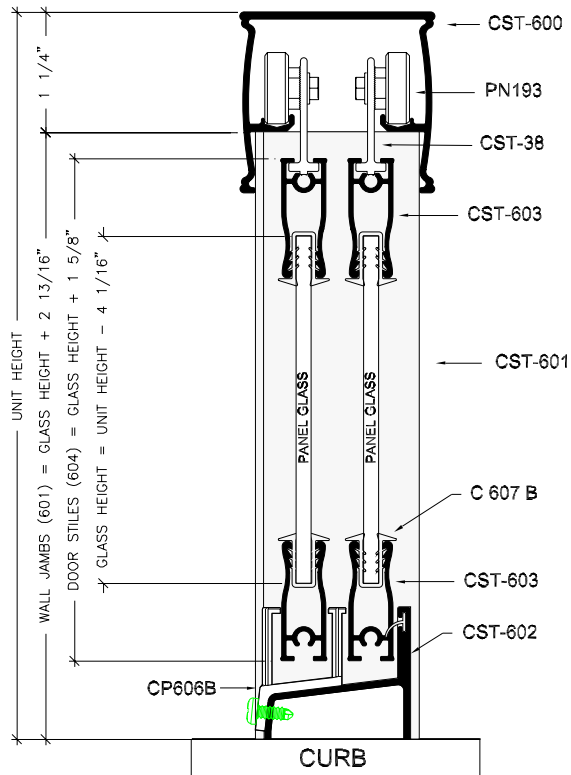
Unit Configuration

PARAGON

Neo Angle (adjustable)



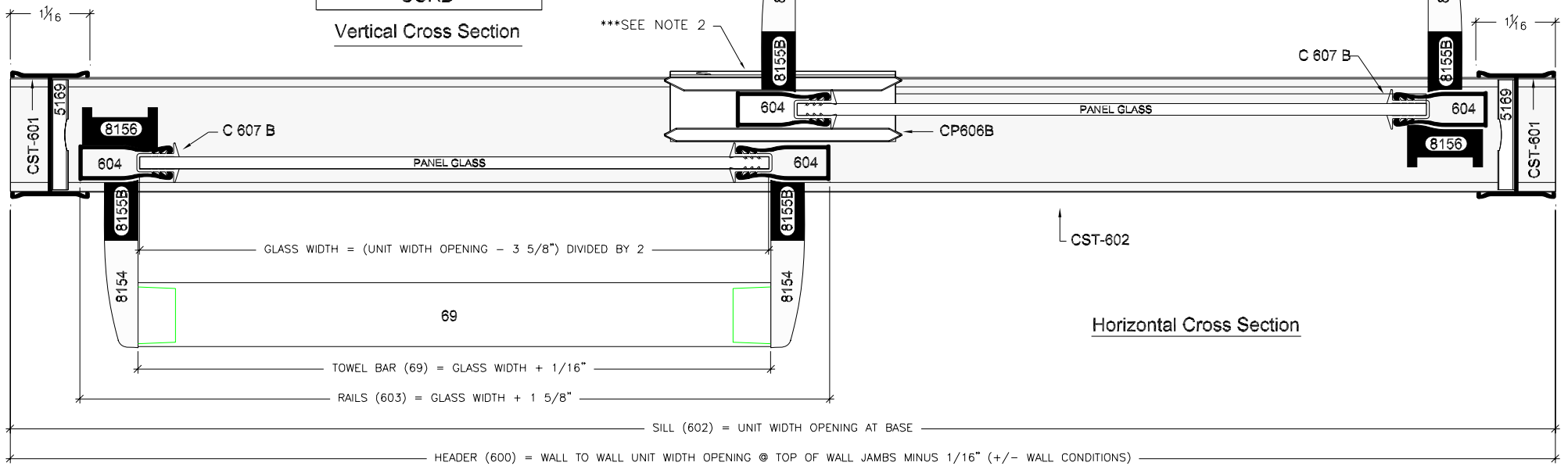
Coastal Industries Inc.



Vertical Cross Section

**NOTES:**

1. FORMULAS ARE BASED ON A MINIMUM WIDTH OPENING. WHEN MEASURING OPENING WIDTHS, ALWAYS CHECK FOR OUT OF PLUMB WALL CONDITIONS.
- \*\*\* 2. FORMULAS FOR GLASS WIDTHS SHOWN WILL YIELD A "PERFECT OVERLAP". THE TERM DESCRIBES THE OVERLAPPING CONDITION OF THE TWO PANELS WHEN CLOSED (PANEL STILES ARE ALIGNED WHEN LOOKED AT STRAIGHT ON).



Horizontal Cross Section

Series

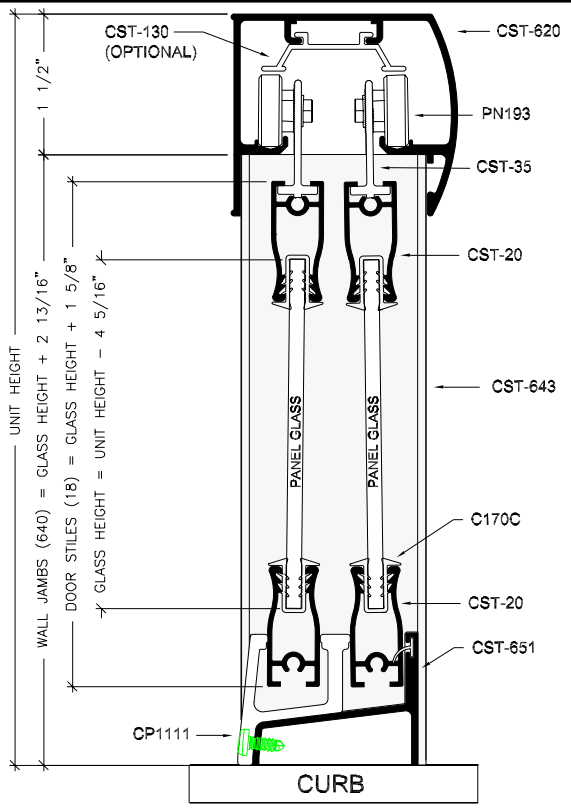
Unit Configuration

NEWPORT

Framed Bypass Door

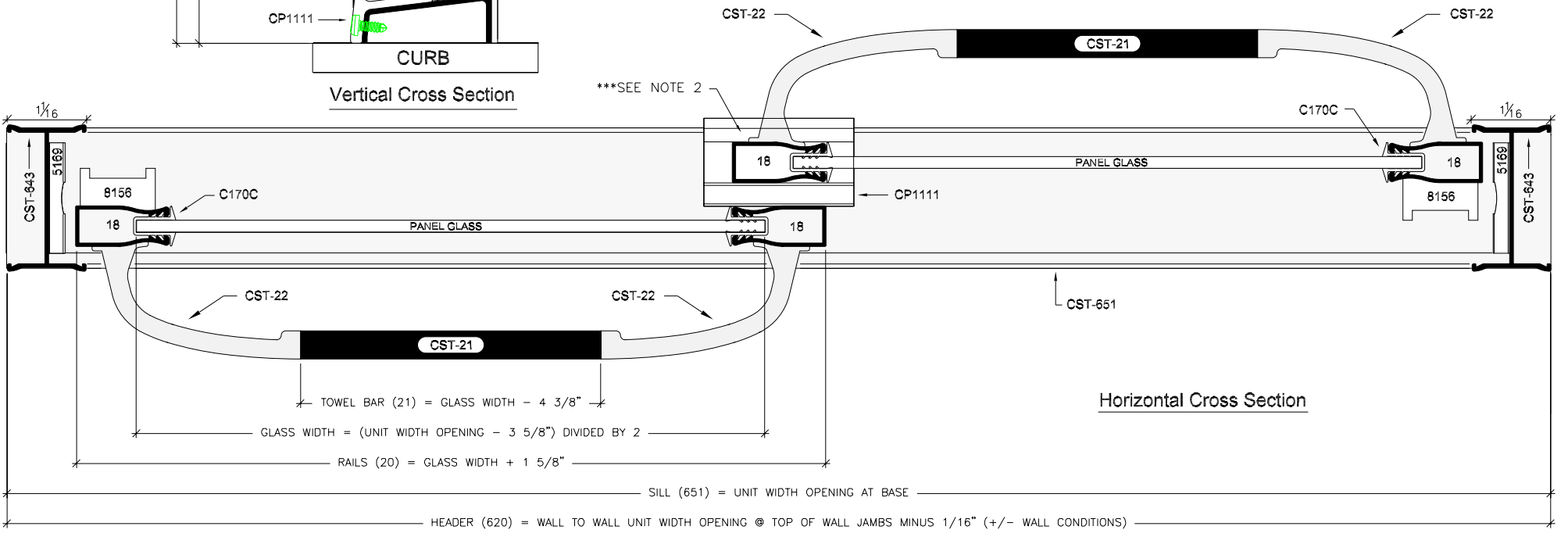


**Coastal Industries Inc.**

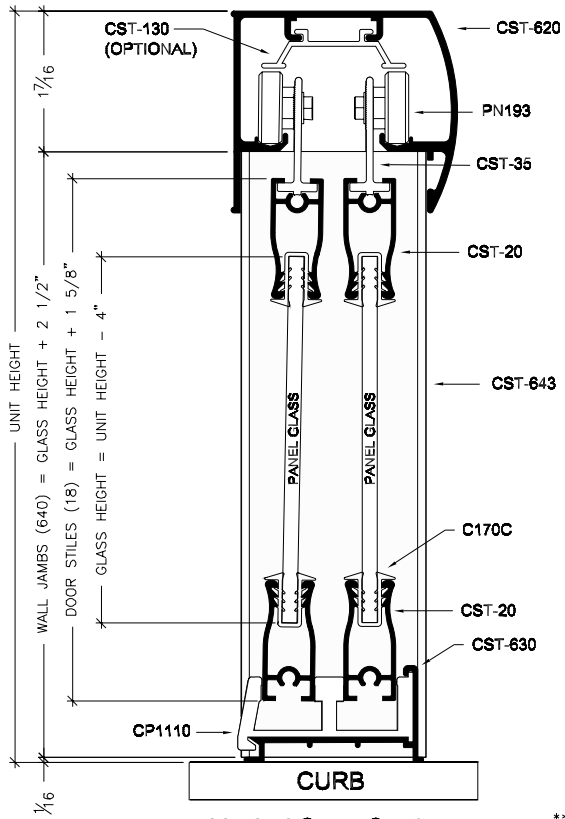


**NOTES:**

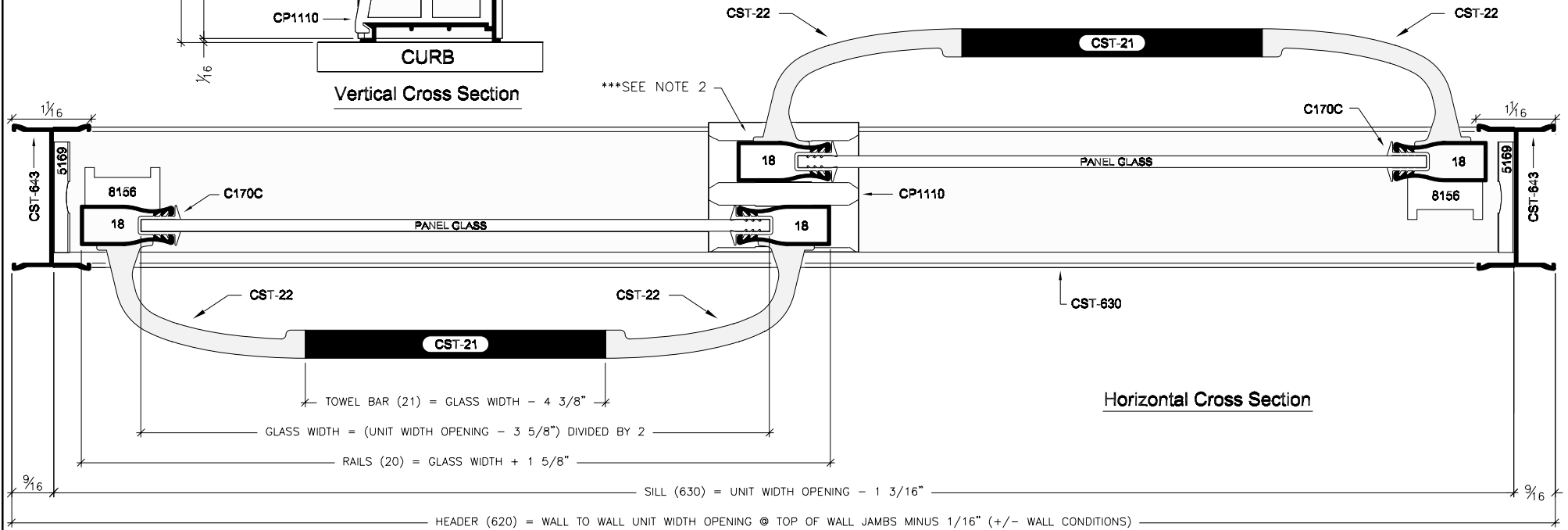
1. FORMULAS ARE BASED ON A MINIMUM WIDTH OPENING. WHEN MEASURING OPENING WIDTHS, ALWAYS CHECK FOR OUT OF PLUMB WALL CONDITIONS.
- \*\*\* 2. FORMULAS FOR GLASS WIDTHS SHOWN WILL YIELD A "PERFECT OVERLAP". THE TERM DESCRIBES THE OVERLAPPING CONDITION OF THE TWO PANELS WHEN CLOSED (PANEL STILES ARE ALIGNED WHEN LOOKED AT STRAIGHT ON).



Series	Unit Configuration
PARAGON	Framed Bypass Door



Vertical Cross Section



**NOTES:**

1. FORMULAS ARE BASED ON A MINIMUM WIDTH OPENING. WHEN MEASURING OPENING WIDTHS, ALWAYS CHECK FOR OUT OF PLUMB WALL CONDITIONS.
- \*\*\* 2. FORMULAS FOR GLASS WIDTHS SHOWN WILL YIELD A "PERFECT OVERLAP". THE TERM DESCRIBES THE OVERLAPPING CONDITION OF THE TWO PANELS WHEN CLOSED (PANEL STILES ARE ALIGNED WHEN LOOKED AT STRAIGHT ON).

\*\*\*SEE NOTE 2

Series

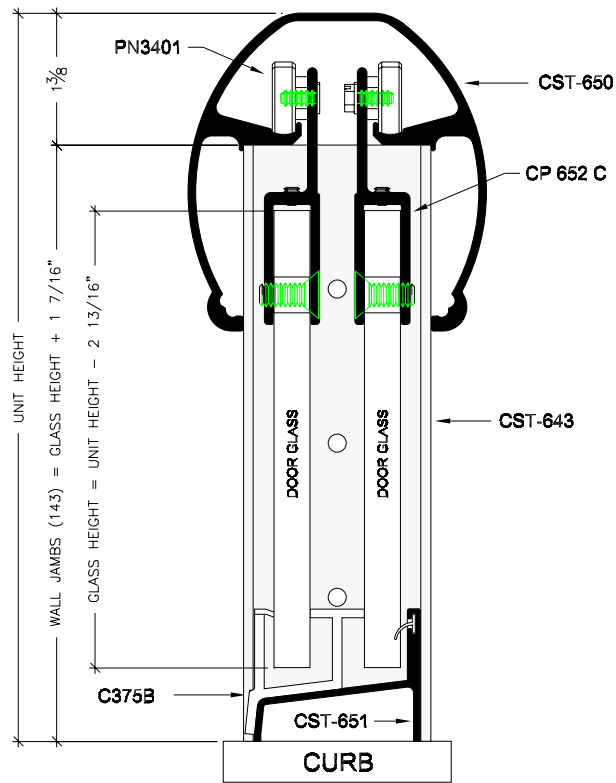
Unit Configuration

PARAGON

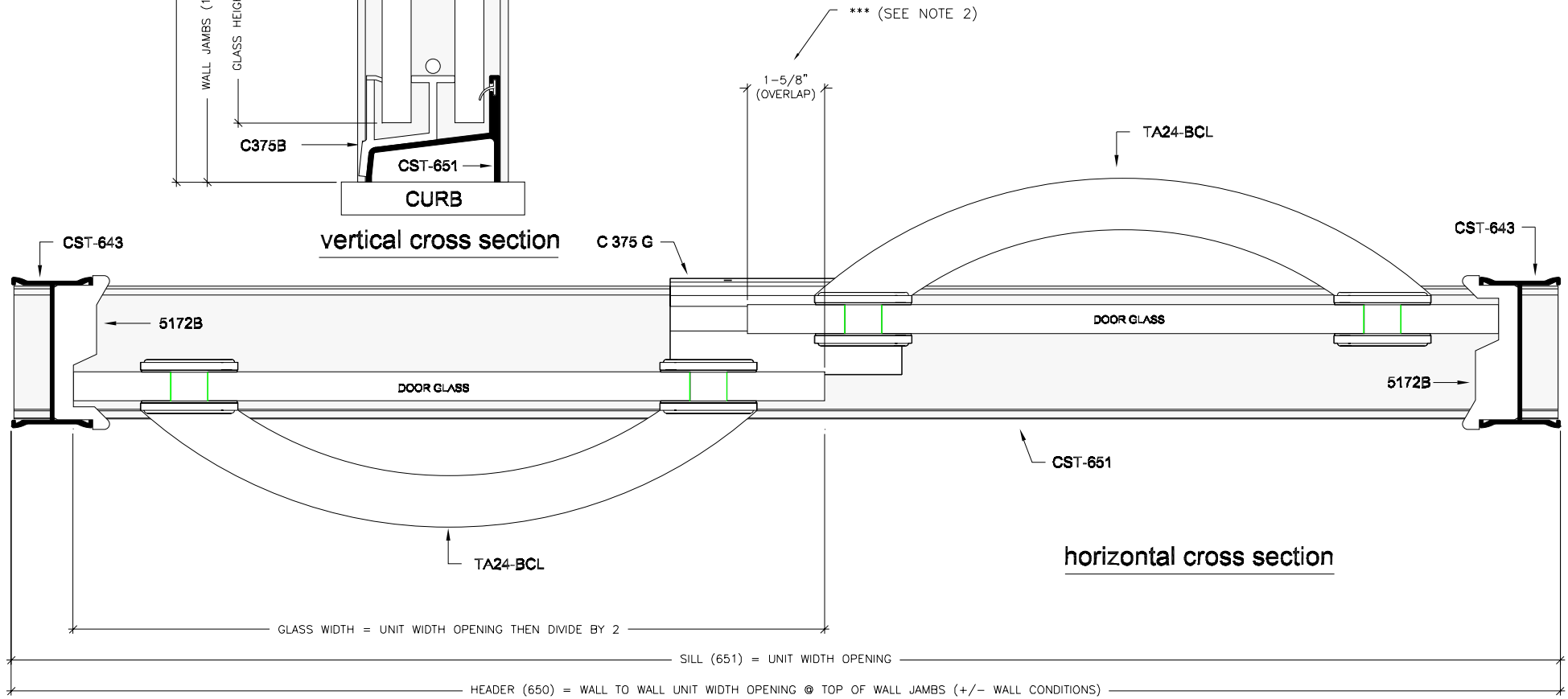
Framed Bypass Door



**Coastal Industries Inc.**



vertical cross section



horizontal cross section

**NOTES:**

1. FORMULAS ARE BASED ON A MAXIMUM WIDTH OPENING. WHEN MEASURING OPENING WIDTHS, ALWAYS CHECK FOR OUT OF PLUMB WALL CONDITIONS.
- \*\*\* 2. FORMULAS FOR GLASS WIDTHS SHOWN WILL YIELD A 1-5/8" OVERLAP. ANY DEVIATION IN GLASS WIDTHS WILL HAVE A PROPORTIONAL EFFECT ON THE GLASS OVERLAP.

Series

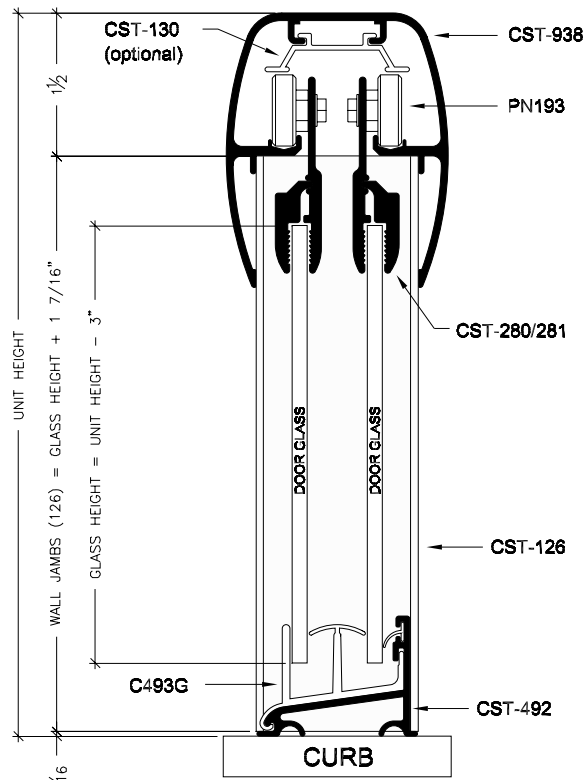
Unit Configuration

PARAGON

3/8" Frameless Bypass Door



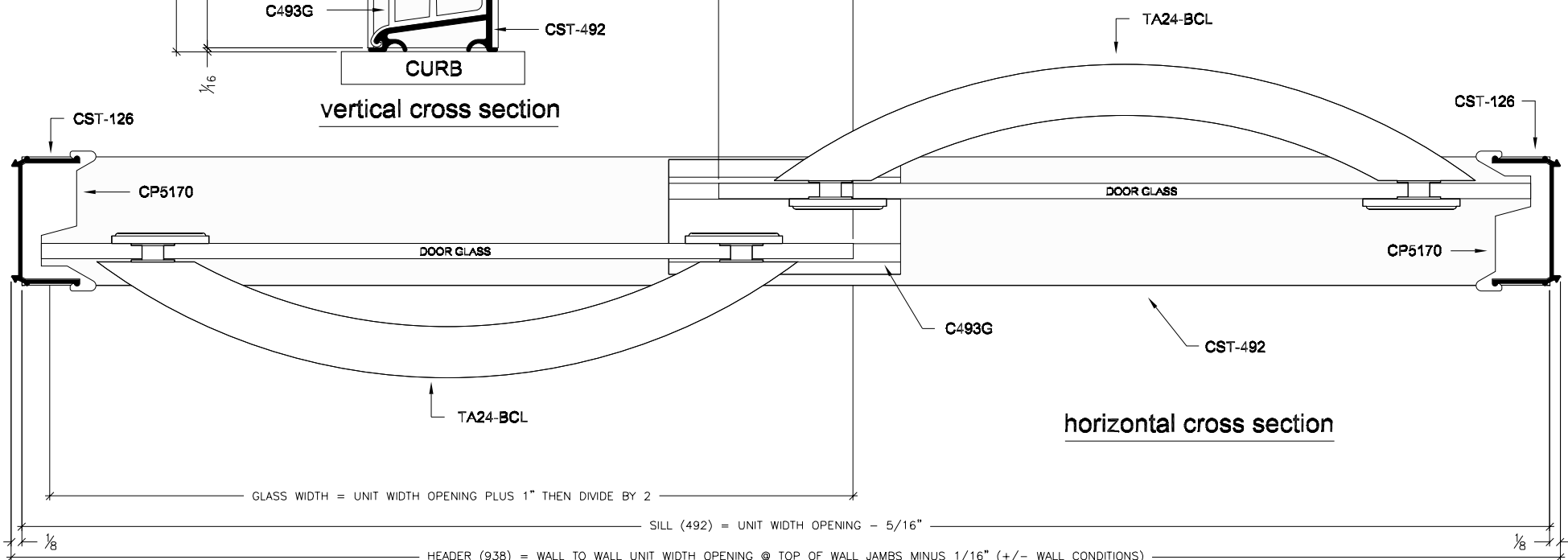
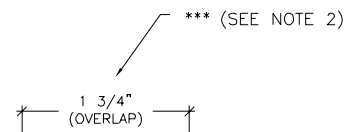
**Coastal Industries Inc.**



vertical cross section

**NOTES:**

1. FORMULAS ARE BASED ON A MINIMUM WIDTH OPENING. WHEN MEASURING OPENING WIDTHS, ALWAYS CHECK FOR OUT OF PLUMB WALL CONDITIONS.
- \*\*\* 2. FORMULAS FOR GLASS WIDTHS SHOWN WILL YIELD A 1-3/4" OVERLAP. ANY DEVIATION IN GLASS WIDTHS WILL HAVE A PROPORTIONAL EFFECT ON THE GLASS OVERLAP.



horizontal cross section

GLASS WIDTH = UNIT WIDTH OPENING PLUS 1" THEN DIVIDE BY 2

SILL (492) = UNIT WIDTH OPENING - 5/16"

HEADER (938) = WALL TO WALL UNIT WIDTH OPENING @ TOP OF WALL JAMBS MINUS 1/16" (+/- WALL CONDITIONS)

Series

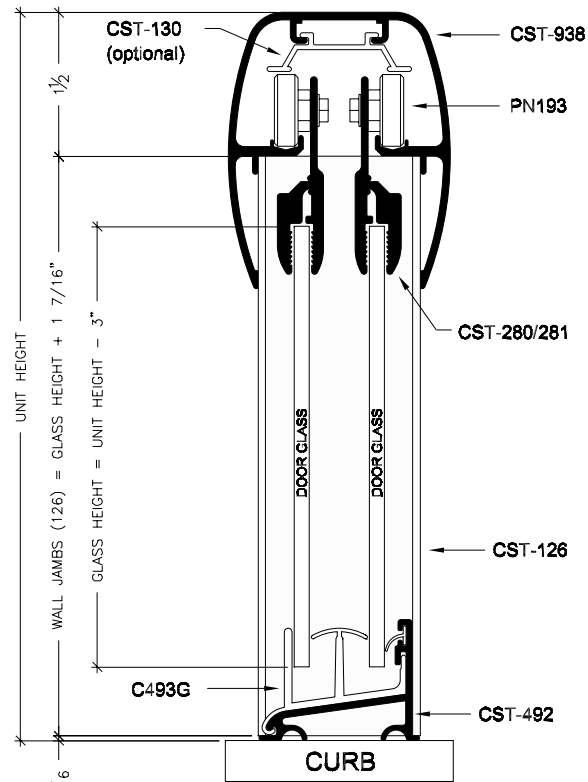
Unit Configuration

PARAGON

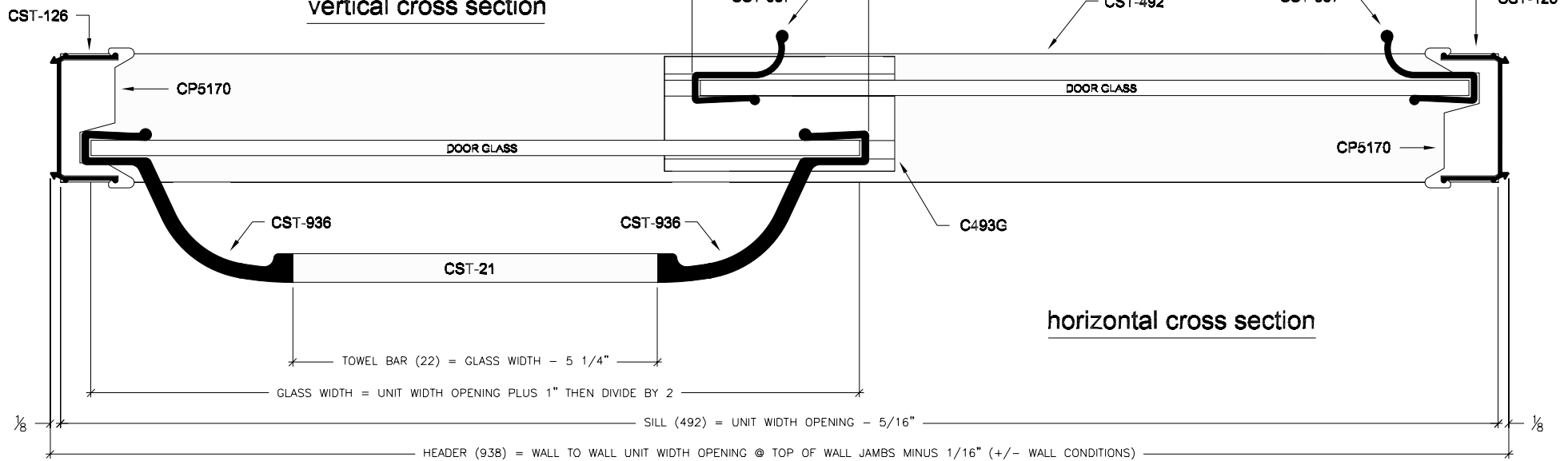
1/4" Frameless Bypass Door



**Coastal Industries Inc.**



vertical cross section



horizontal cross section

**NOTES:**

1. FORMULAS ARE BASED ON A MINIMUM WIDTH OPENING. WHEN MEASURING OPENING WIDTHS, ALWAYS CHECK FOR OUT OF PLUMB WALL CONDITIONS.
- \*\*\* 2. FORMULAS FOR GLASS WIDTHS SHOWN BELOW WILL YIELD A 2-5/16" OVERLAP. ANY DEVIATION IN GLASS WIDTHS WILL HAVE A PROPORTIONAL EFFECT ON THE GLASS OVERLAP.

Series                      Unit Configuration

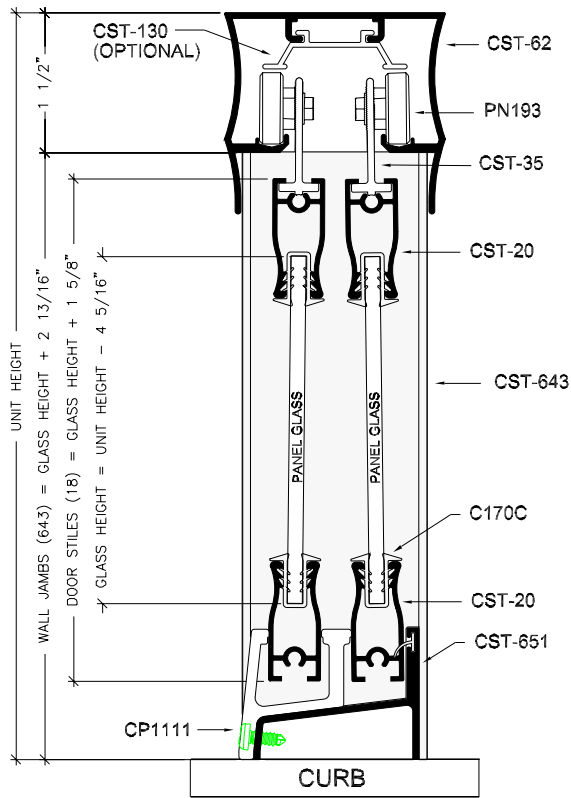
PARAGON  
B - SERIES

Frameless Bypass Door

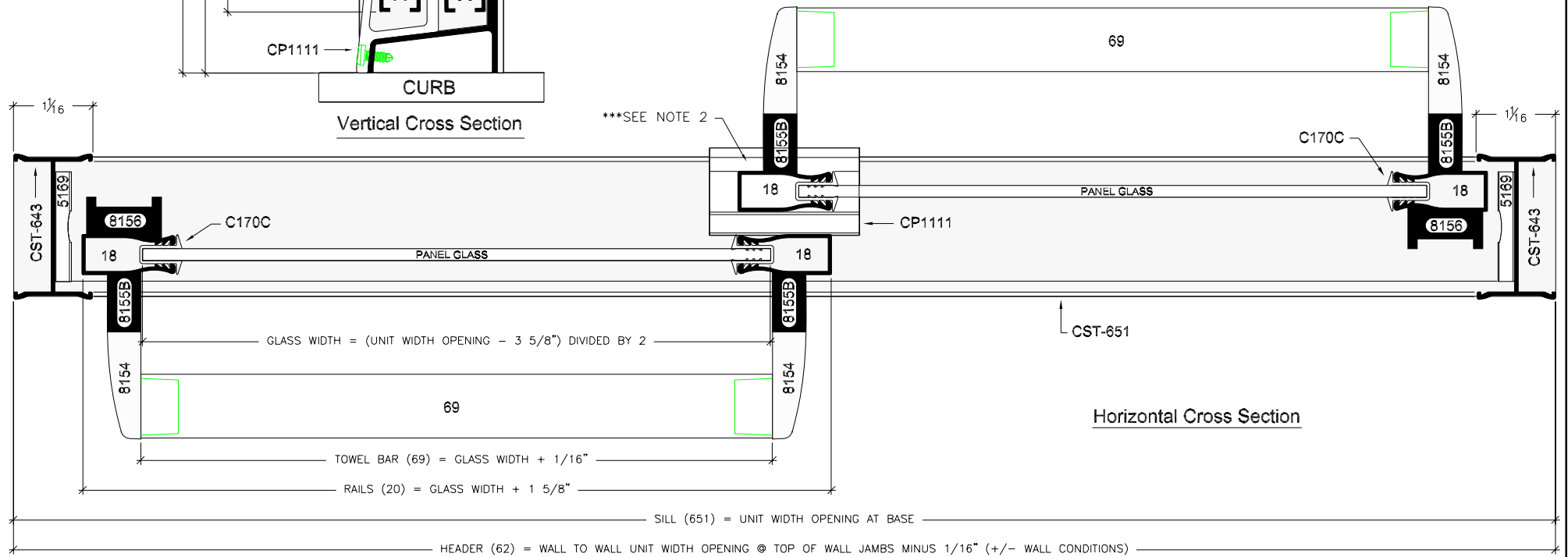


**Coastal Industries Inc.**





Vertical Cross Section



Horizontal Cross Section

**NOTES:**

1. FORMULAS ARE BASED ON A MINIMUM WIDTH OPENING. WHEN MEASURING OPENING WIDTHS, ALWAYS CHECK FOR OUT OF PLUMB WALL CONDITIONS.
- \*\*\* 2. FORMULAS FOR GLASS WIDTHS SHOWN WILL YIELD A "PERFECT OVERLAP". THE TERM DESCRIBES THE OVERLAPPING CONDITION OF THE TWO PANELS WHEN CLOSED (PANEL STILES ARE ALIGNED WHEN LOOKED AT STRAIGHT ON).

Series

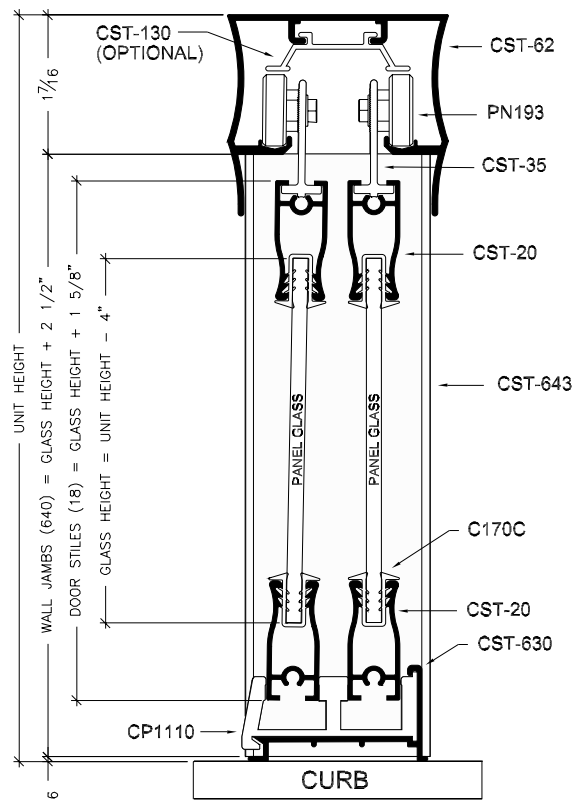
Unit Configuration

PORT ROYAL

Framed Bypass Door

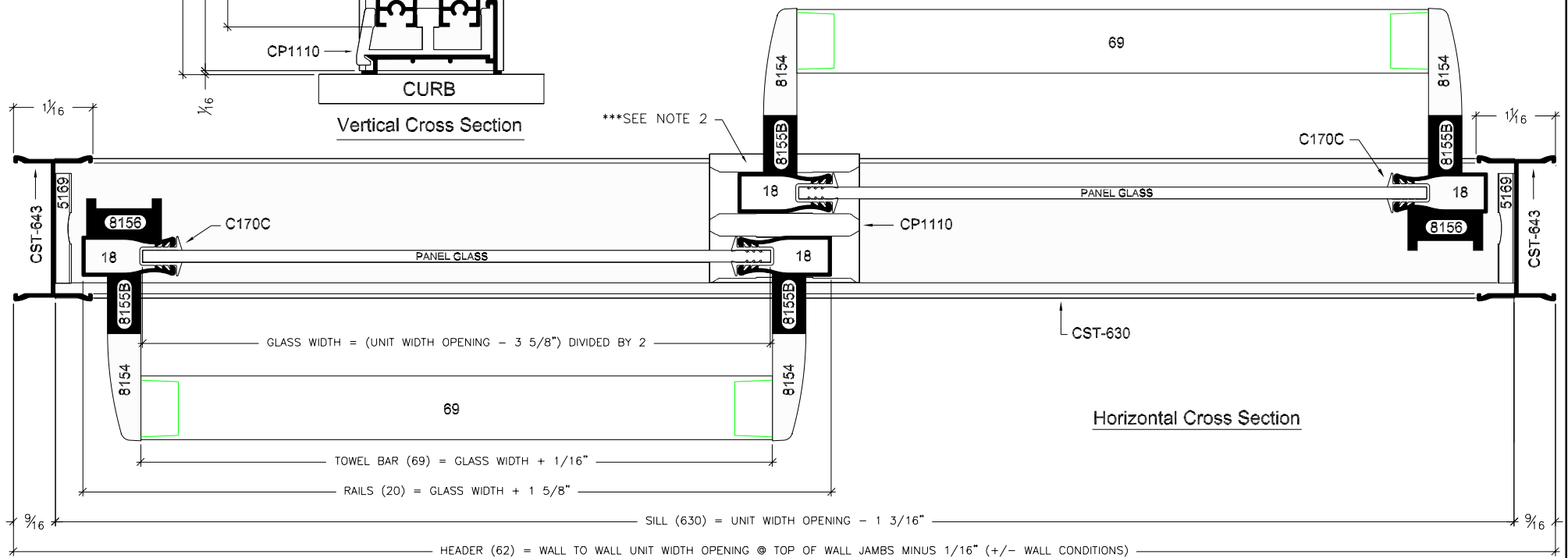


**Coastal Industries Inc.**



Vertical Cross Section

\*\*\*SEE NOTE 2



Horizontal Cross Section

**NOTES:**

1. FORMULAS ARE BASED ON A MINIMUM WIDTH OPENING. WHEN MEASURING OPENING WIDTHS, ALWAYS CHECK FOR OUT OF PLUMB WALL CONDITIONS.
- \*\*\* 2. FORMULAS FOR GLASS WIDTHS SHOWN WILL YIELD A "PERFECT OVERLAP". THE TERM DESCRIBES THE OVERLAPPING CONDITION OF THE TWO PANELS WHEN CLOSED (PANEL STILES ARE ALIGNED WHEN LOOKED AT STRAIGHT ON).

Series

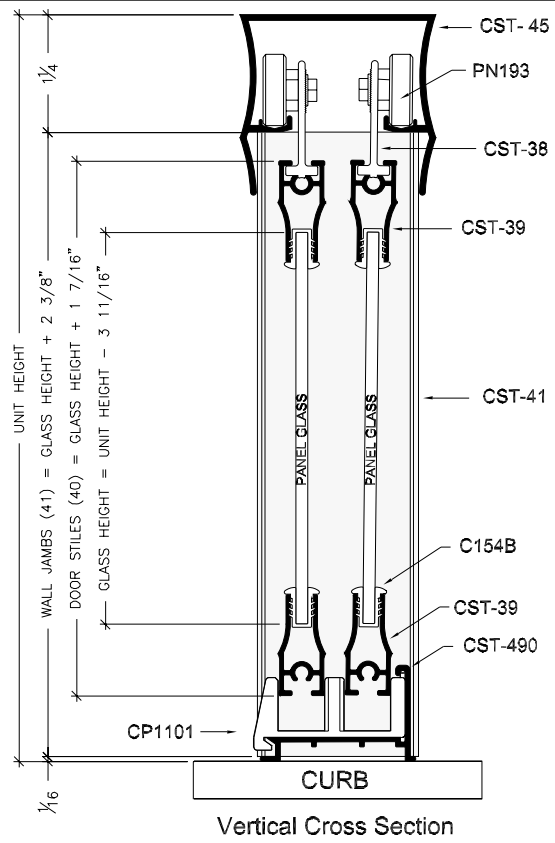
Unit Configuration

PORT ROYAL

Framed Bypass Door

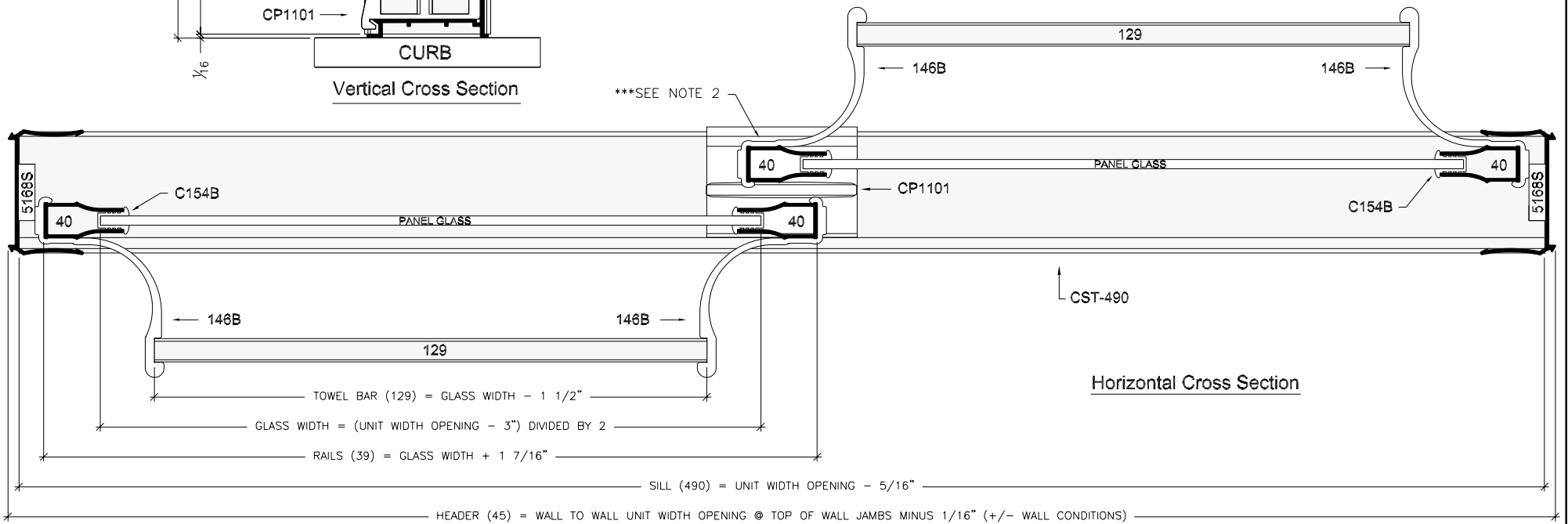


**Coastal Industries Inc.**



Vertical Cross Section

\*\*\*SEE NOTE 2



Horizontal Cross Section

**NOTES:**

1. FORMULAS ARE BASED ON A MINIMUM WIDTH OPENING. WHEN MEASURING OPENING WIDTHS, ALWAYS CHECK FOR OUT OF PLUMB WALL CONDITIONS.
- \*\*\* 2. FORMULAS FOR GLASS WIDTHS SHOWN WILL YIELD A "PERFECT OVERLAP". THE TERM DESCRIBES THE OVERLAPPING CONDITION OF THE TWO PANELS WHEN CLOSED (PANEL STILES ARE ALIGNED WHEN LOOKED AT STRAIGHT ON).

Series

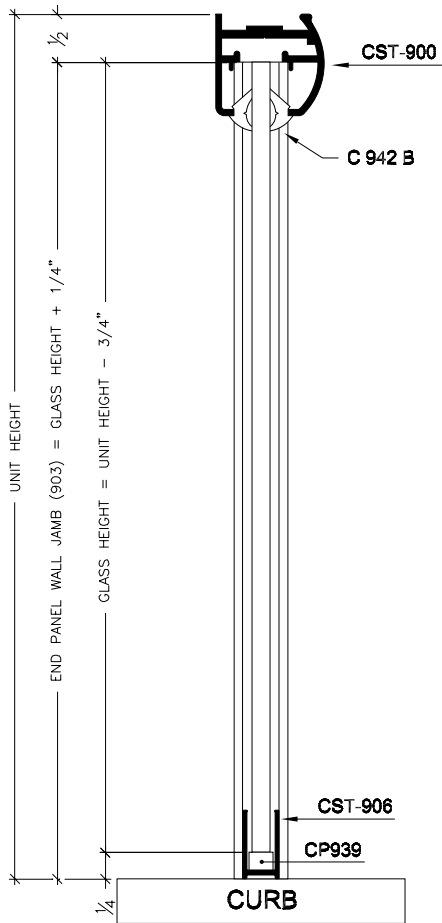
Unit Configuration

ROYAL PALM

Framed Bypass Door



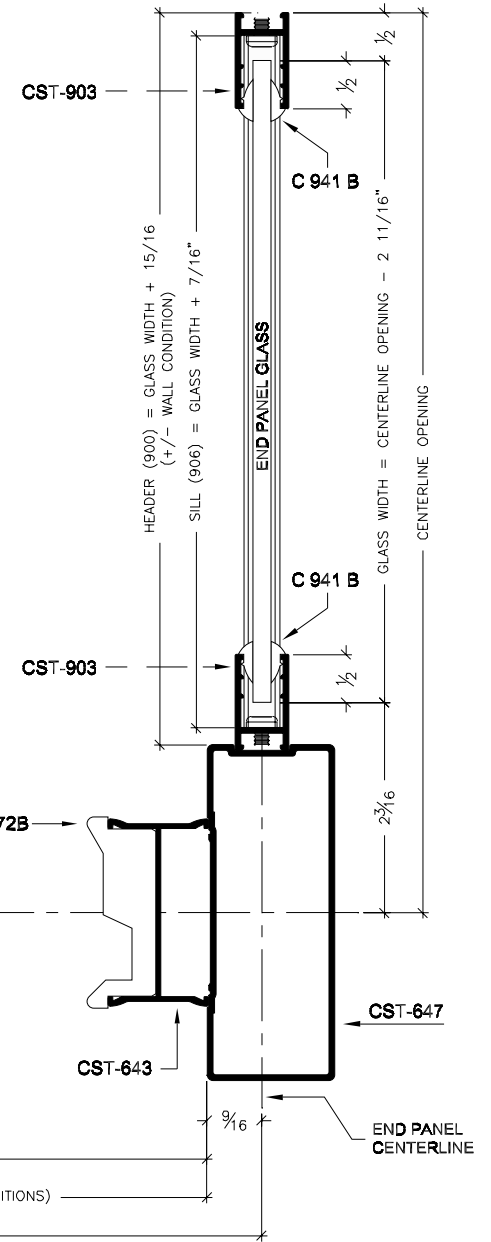
**Coastal Industries Inc.**



**End Panel  
Vertical Cross Section**

**NOTES:**

1. FORMULAS ARE BASED ON A MINIMUM WIDTH OPENING. WHEN MEASURING OPENING WIDTHS, ALWAYS CHECK FOR OUT OF PLUMB WALL CONDITIONS.



**End Panel  
Horizontal Cross Section**

Series

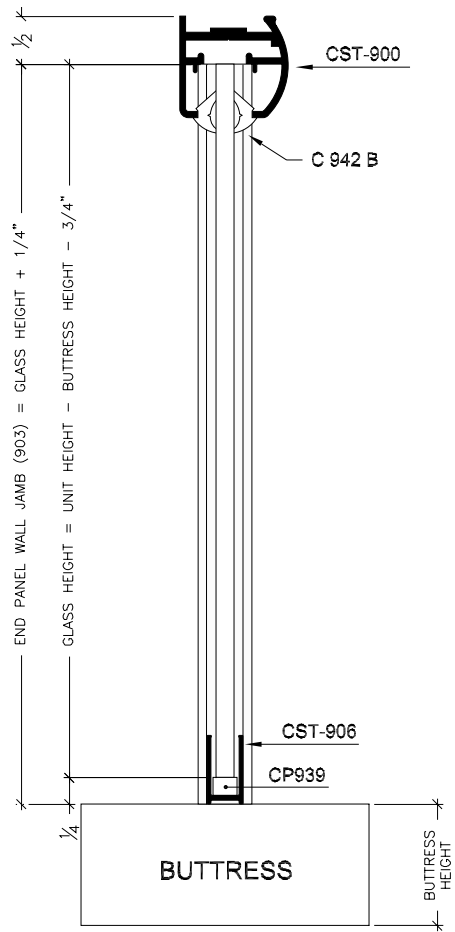
Unit Configuration

Paragon 3/8"  
Frameless

End Panel



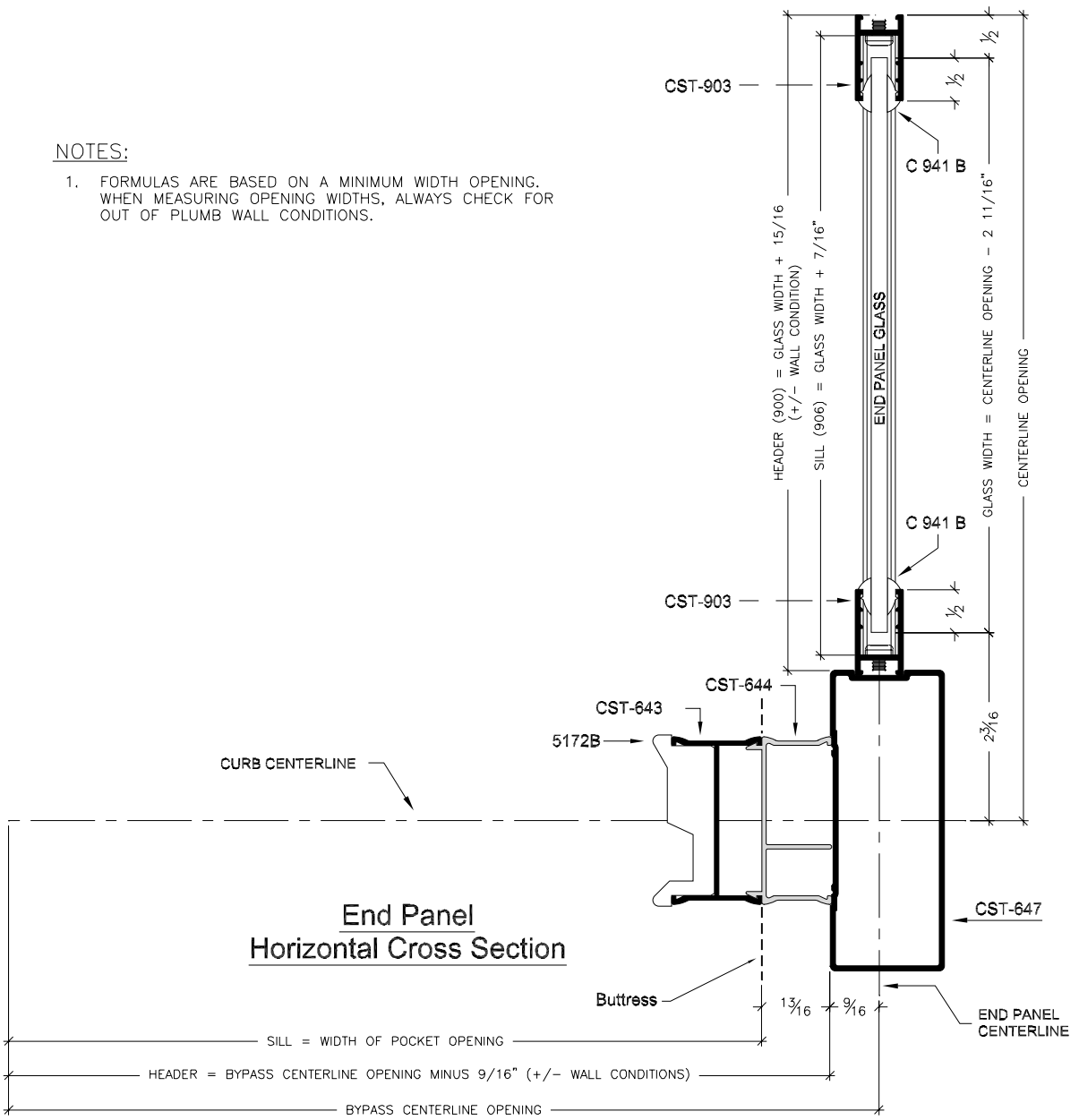
**Coastal Industries Inc.**



**End Panel  
(end panel on buttness)  
Vertical Cross Section**

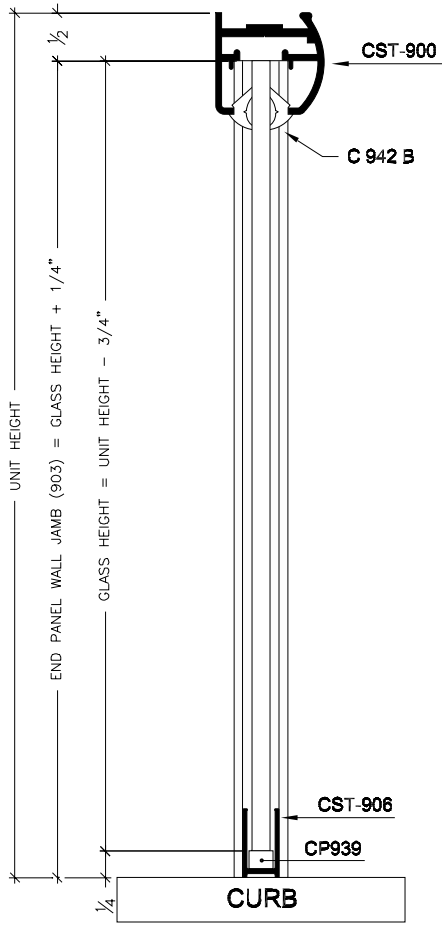
**NOTES:**

1. FORMULAS ARE BASED ON A MINIMUM WIDTH OPENING. WHEN MEASURING OPENING WIDTHS, ALWAYS CHECK FOR OUT OF PLUMB WALL CONDITIONS.



**End Panel  
Horizontal Cross Section**

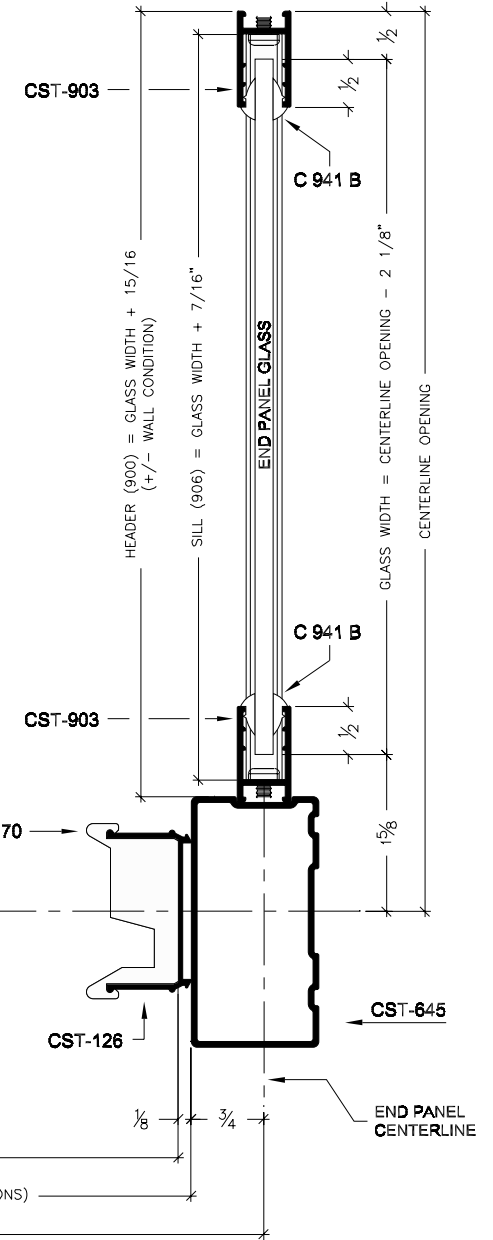
Series	Unit Configuration
Paragon 3/8" Frameless	End Panel On Buttness



**End Panel  
Vertical Cross Section**

**NOTES:**

1. FORMULAS ARE BASED ON A MINIMUM WIDTH OPENING. WHEN MEASURING OPENING WIDTHS, ALWAYS CHECK FOR OUT OF PLUMB WALL CONDITIONS.



**End Panel  
Horizontal Cross Section**

Series

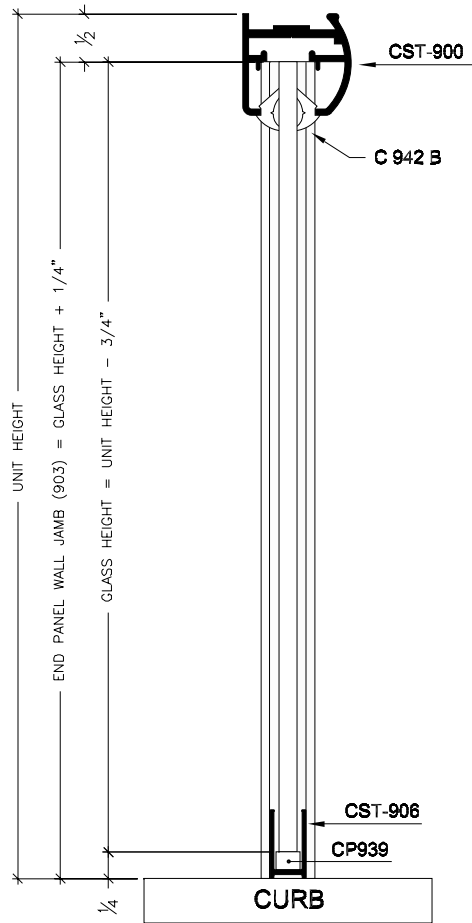
Unit Configuration

Paragon 1/4" Bypass,  
and  
Paragon B-Series Bypass

End Panel



**Coastal Industries Inc.**



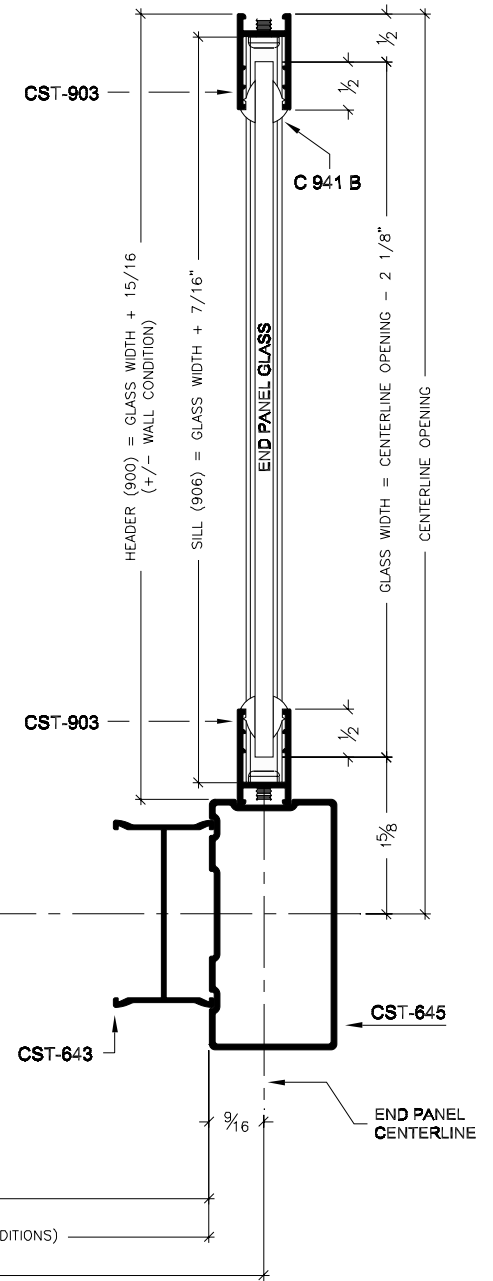
**End Panel  
Vertical Cross Section**

**NOTES:**

1. FORMULAS ARE BASED ON A MINIMUM WIDTH OPENING. WHEN MEASURING OPENING WIDTHS, ALWAYS CHECK FOR OUT OF PLUMB WALL CONDITIONS.

CURB CENTERLINE

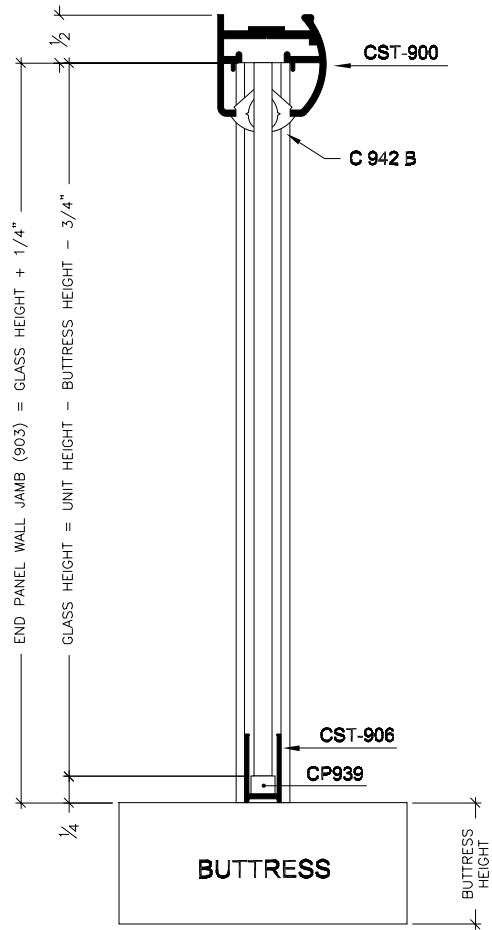
**End Panel  
Horizontal Cross Section**



Series	Unit Configuration
Port Royal & Paragon Framed	End Panel



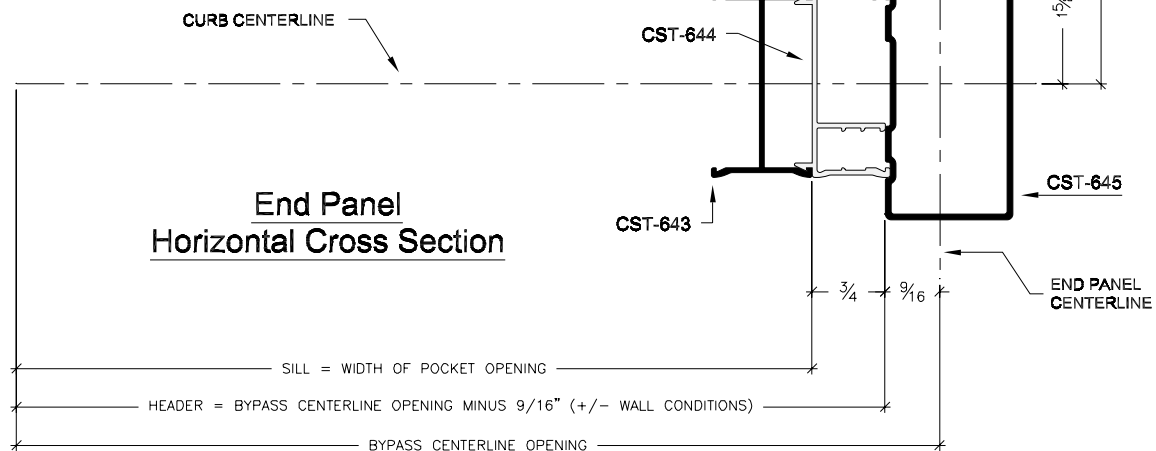
**Coastal Industries Inc.**



**End Panel  
(end panel on buttruss)  
Vertical Cross Section**

**NOTES:**

1. FORMULAS ARE BASED ON A MINIMUM WIDTH OPENINGS. WHEN MEASURING OPENING WIDTHS, ALWAYS CHECK FOR OUT OF PLUMB WALL CONDITIONS.



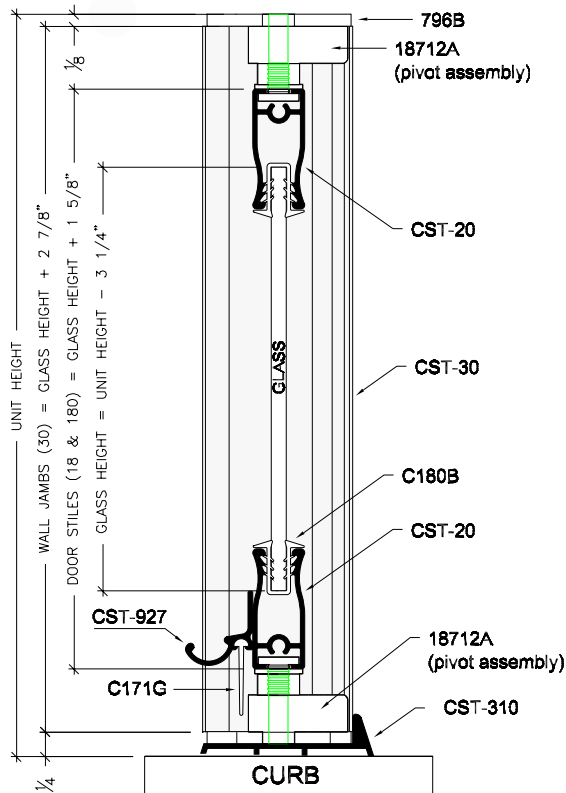
**End Panel  
Horizontal Cross Section**

Series	Unit Configuration
Port Royal & Paragon Framed	End Panel On Buttruss



**Coastal Industries Inc.**

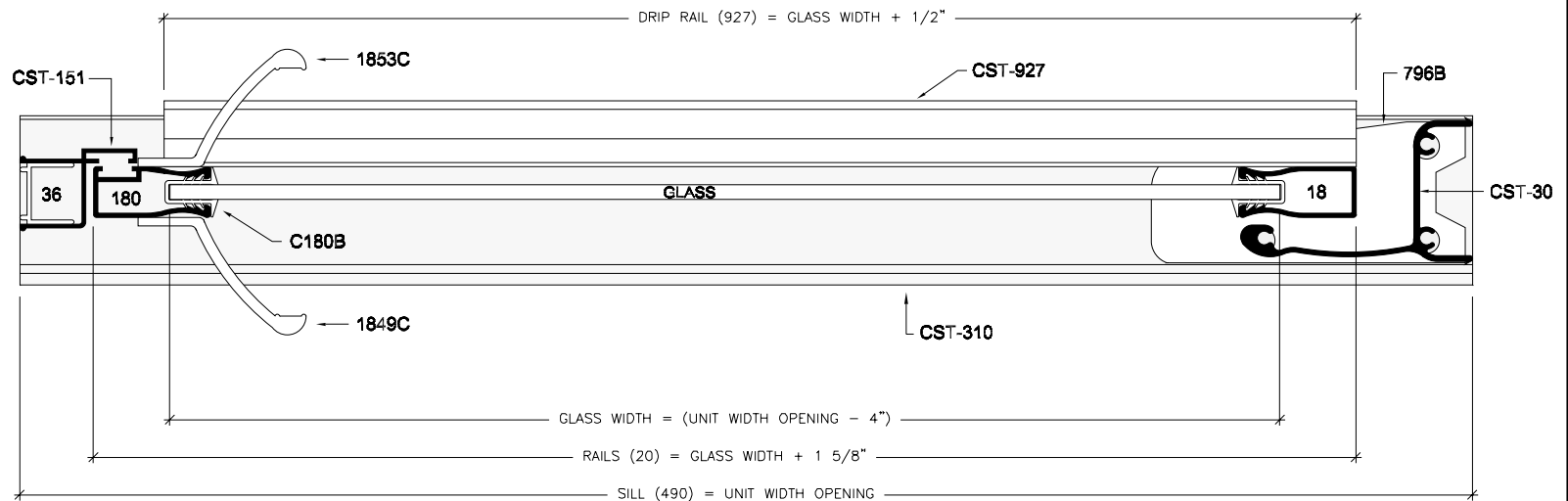




Vertical Cross Section

**NOTES:**

1. WHEN MEASURING OPENING WIDTHS, ALWAYS CHECK FOR OUT OF PLUMB WALL CONDITIONS.
2. GLASS FORMULA BELOW WILL YIELD A DOOR WIDTH, WITH 1 5/8" TOTAL ADJUSTMENT, THAT IS TO SAY, THAT THE DOOR CAN RETRACT 13/16" OR EXPAND 13/16".



Series

Unit Configuration

PACEMAKER

Pivot Door

Horizontal Cross Section



**Coastal Industries Inc.**