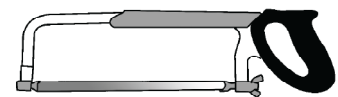
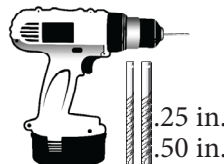
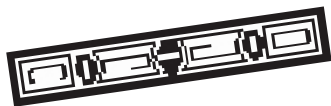
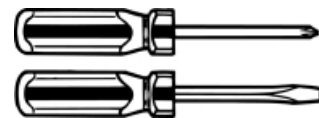
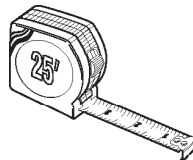


1933740

06/18



Tools you will need for assembly:



Getting Started

- Please refer to the instruction sheet provided in the product package for the specifics on required & recommended tools for the assembly of the products.
- Take an inventory of the parts for the products purchased to insure you have everything you need for the installation.
- Pre-plan the placement of the towers.

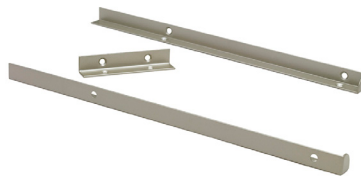
General Tips

- Assemble and build your towers.
- Place your towers, making sure to affix them to the wall as directed.
- Measure the length that the rods will need to be for each side. Make sure the span between units or unit and wall is not greater than 48 in. The top shelves and closet rods fit a maximum space of 48 in.
- The expandable closet rods are 30 in. to 48 in. long. If the length is shorter than 30 in. the rod will need to be cut.
- Install the closet rods and top shelves.
- Assemble and install any drawers into the tower unit (sold separately).

Parts List



1 - 25 In. Starter Kit



3 - Top Shelf Support Kit



3 - 48 In. Top Shelf



2 - 25 in. x 10 in. D Drawer



2 - 25 in. x 5 in. D Drawer

