

CHICAGO FAUCETS
a Geberit company

2100 South Clearwater Drive
Des Plaines, IL 60018
Phone: 847-803-5000
Fax: 847-803-5454
www.chicagofaucets.com

REPAIR PARTS

FITTING NO.

449-950CP

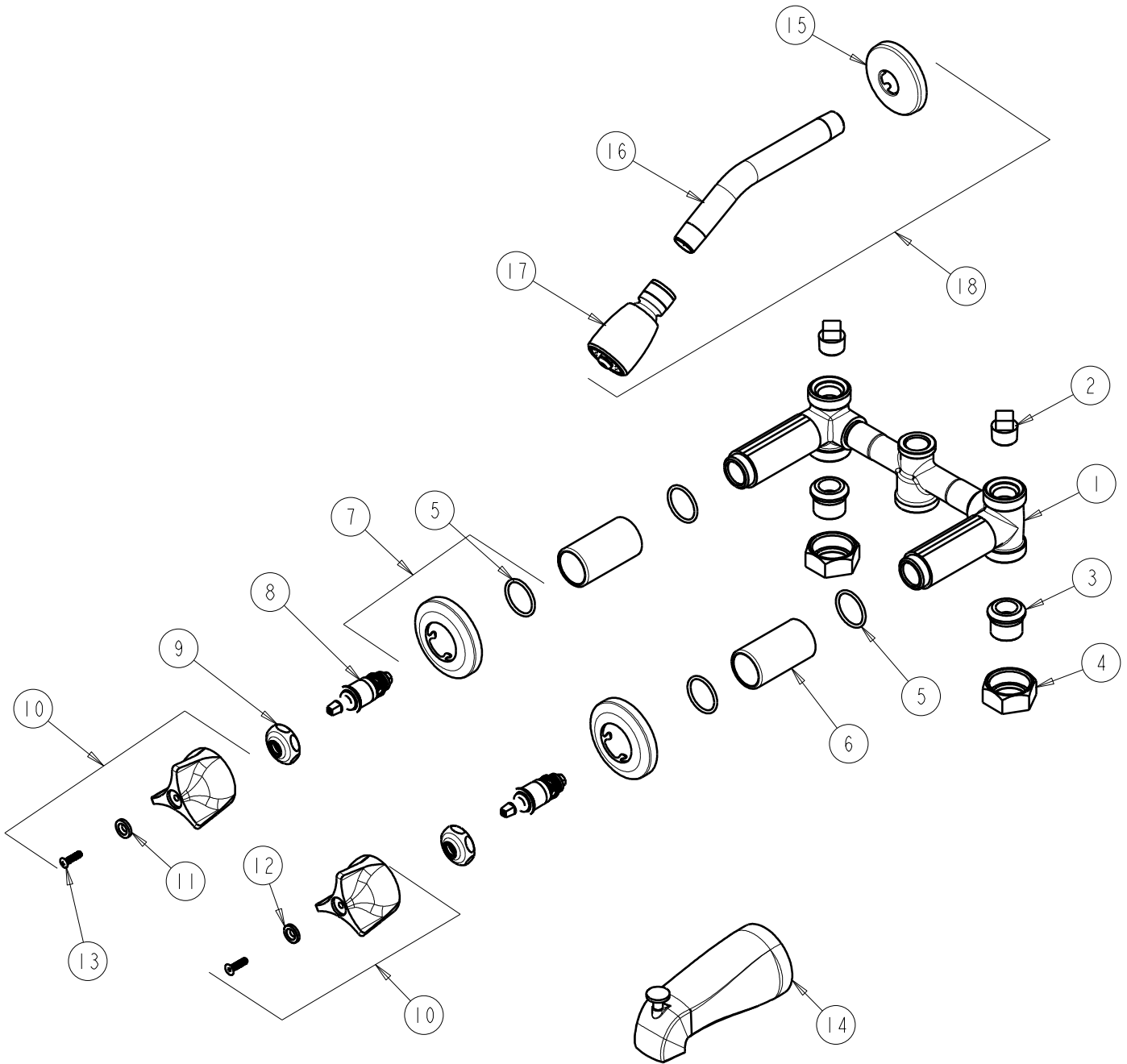
SUBMITTED MODEL NO.

ITEM NO.

FOR TECHNICAL ASSISTANCE
1-800-TEC-TRUE (1-800-832-8783)

BY: SID DATE: 03-01-10

CHK: *[Signature]* REV:



ITEM	PART NO.	DESCRIPTION	ITEM	PART NO.	DESCRIPTION
1	—	VALVE BODY (NOT SOLD SEPARATELY)	10	950-PRJKCP	3-WING HANDLE ASSEMBLY (PAIR)
2	234-032JKRCF	1/2 NPT PLUG	11	633-023JKNF	INDEX BUTTON (RED)
3	177-003JKCP	UNION TAILPIECE	12	633-123JKNF	INDEX BUTTON (BLUE)
4	177-002JKCP	UNION NUT	13	250-093JKRCF	SCREW
5	5235-107JKNF	O-RING	14	749-SJKCP	TUB SPOUT, DIVERTER
6	5235-106JKCP	SLEEVE	15	749-016JKCP	FLANGE
7	633-201JKCP	FLANGE & O-RING	16	415-021JKCP	TUBE-SHOWER ARM
8	217-XTLHJKNF	CARTRIDGE, SLO-COMPRESSION	17	620-CP	SHOWER HEAD
9	1-214JKCP	CAP	18	620-ACP	SHOWER HEAD AND ARM