

Installation should be in accordance with local plumbing codes. Flush all pipes thoroughly before installation.

La instalación se debe hacer solo de acuerdo con los códigos de plomería locales. Nivele bien todas las tuberías antes de instalar.

L'installation doit se faire conformément aux codes de plomberie locaux. Videz tous les tuyaux entièrement avant de commencer l'installation.

Limited Warranty

The CHICAGO FAUCET COMPANY ("Chicago Faucets") extends to the original consumer the following warranties for Genuine Chicago Faucets manufactured products and components, or other components under the Chicago Faucets Warranties, (collectively, the "Products").

Lifetime Faucet Warranty The "Faucet", defined as any metal cast, forged, stamped or formed portion of the Product, not including electronic or moving parts or water restricting components, or other components covered under the Chicago Faucet warranties, is warranted against defects for the life of the product.

Five Year Cartridge Warranty The "Cartridge", defined as the metal portion of any Product typically referred to by the product numbers containing 1-099X, 1-100X, 217-X, 377-X, 274-X excluding any rubber or plastic components, is warranted against manufacturing defects for a period of five (5) years from the date of Product purchase.

One Year Finish Warranty The finish of the Product is warranted against manufacturing defects for a period of one (1) year from the date of Product purchase.

Care & Maintenance

All Chicago Faucet fittings are designed and engineered to meet or exceed industry performance standards. Care should be taken cleaning this product. Do not use abrasive cleaners, chemicals or solvents as they can result in surface damage. Use mild soap with warm water for cleaning and protecting the life of Chicago Faucets fittings.



a Geberit company



a Geberit company

Installation Instructions for
SSPS RETROFIT
Recommended for Single Supply
HyTronic® and E-Tronic® 40 Faucets Only

Includes:

- SSPS Generator Unit
- Electronics Module and Holder
- Green Power Adapter
- Hose
- Low-Flow Outlets



The Chicago Faucet Company
2100 South Clearwater Drive
Des Plaines, IL 60018
Phone: 847/803-5000
Fax: 847/803-5454
Technical: 800/832-8783
www.chicagofaucets.com



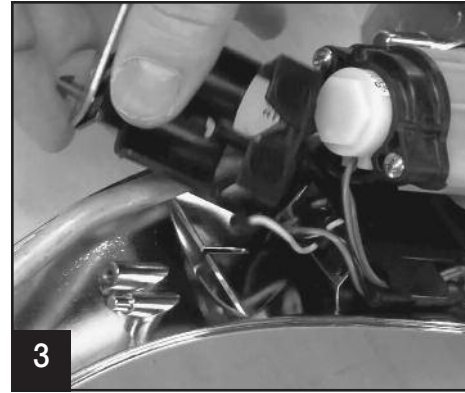
Replace Faucet Electronics Module: E-Tronic® 40



1
Remove the faucet.
Turn off water supplies and disconnect power source.



2
Disassemble the faucet.
Remove spout to expose faucet body and electronics.



3
Remove screw from electronics module mounting plate.



4
Remove electronics module.
Carefully remove battery housing and IR sensor. Separate wire connections.



5
Prepare to install new module.
Feed green battery wire through hole in faucet base, insert green adapter.



6
Position new electronics module into faucet.



7
Join module connections and secure wiring into integrated clamp.



8
Resecure module with mounting plate and screw.



9
Assemble faucet.



10
Re-install Faucet.
Secure faucet to sink.

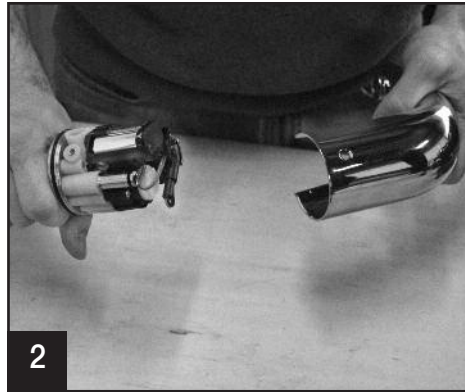
Replace Faucet Electronics Module: HyTronic®



1

Remove the faucet.

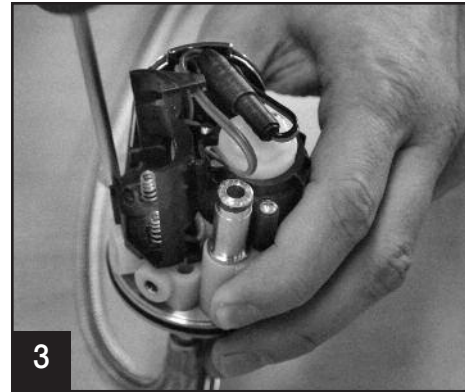
Turn off water supplies and disconnect power source.



2

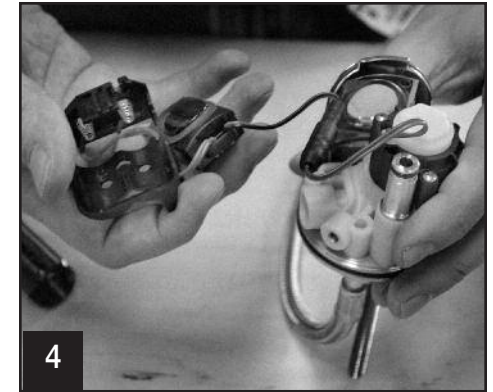
Disassemble the faucet.

Remove spout to expose faucet body and electronics.



3

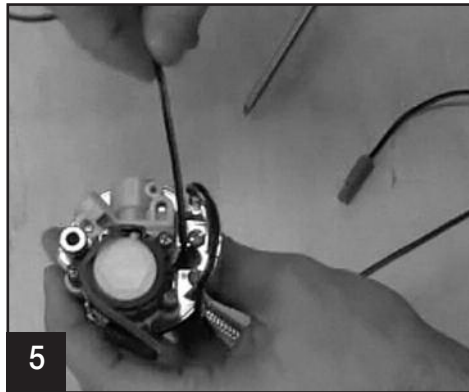
Remove screw at base of battery housing.



4

Remove electronics module.

Carefully remove battery housing and IR sensor. Separate wire connections.



5

Prepare to install new module.

Feed green battery wire through hole in faucet base.



6

Install new electronics module.

Be sure to snap in housing and secure the module with screw.



7

Insert green adapter into battery housing.



8

Join power module connections.

Secure wiring in integrated clamp.



9

Assemble Faucet.

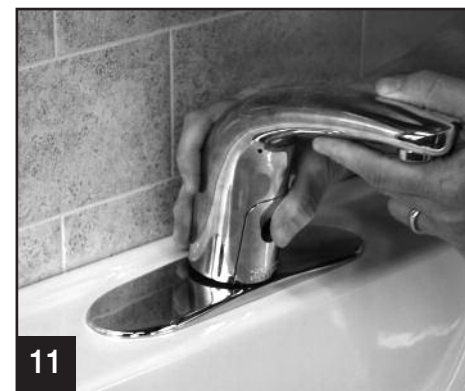
Attach rubber gasket and spout body.



10

Install new outlet.

Use supplied key to install new low flow, vandal proof outlet.



11

Re-install Faucet.

Secure faucet to sink.



12

Feed wire and supply line through mounting bracket.

Connect the SSPS Unit



1
Connect SSPS unit.
Attached to faucet and install water supply line.



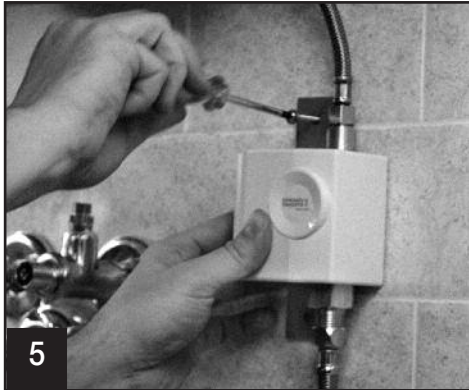
2
Position SSPS under sink.
Carefully position to allow connection of water lines and wiring.



3
Mark holes.
Position mounting bracket and mark mounting holes.



4
Drill holes.
Drill holes for screw anchors.



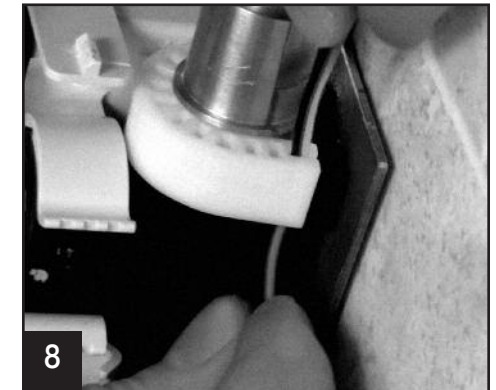
5
Secure SSPS to wall.
Insert anchors into holes and mount SSPS unit to wall with supplied screws.



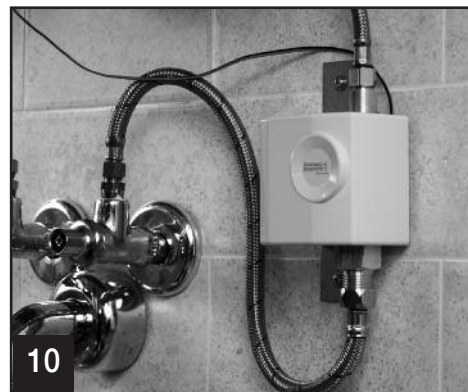
6
Attach to supply.
Attach inlet hose to supply and turn on water. With water on, check system for leaks.



7
Connect wiring.
Remove cover and connect faucet wire to SSPS and secure into wire harness.



9
Attach cover plate.
Faucet will run through programming sequence.



10