

**CHICAGO FAUCETS**  
a Geberit company

2100 South Clearwater Drive  
Des Plaines, IL 60018  
Phone: 847-803-5000  
Fax: 847-803-5454  
www.chicagofaucets.com

**REPAIR PARTS**

FITTING NO.

**930-GN8BVB317XKCP**

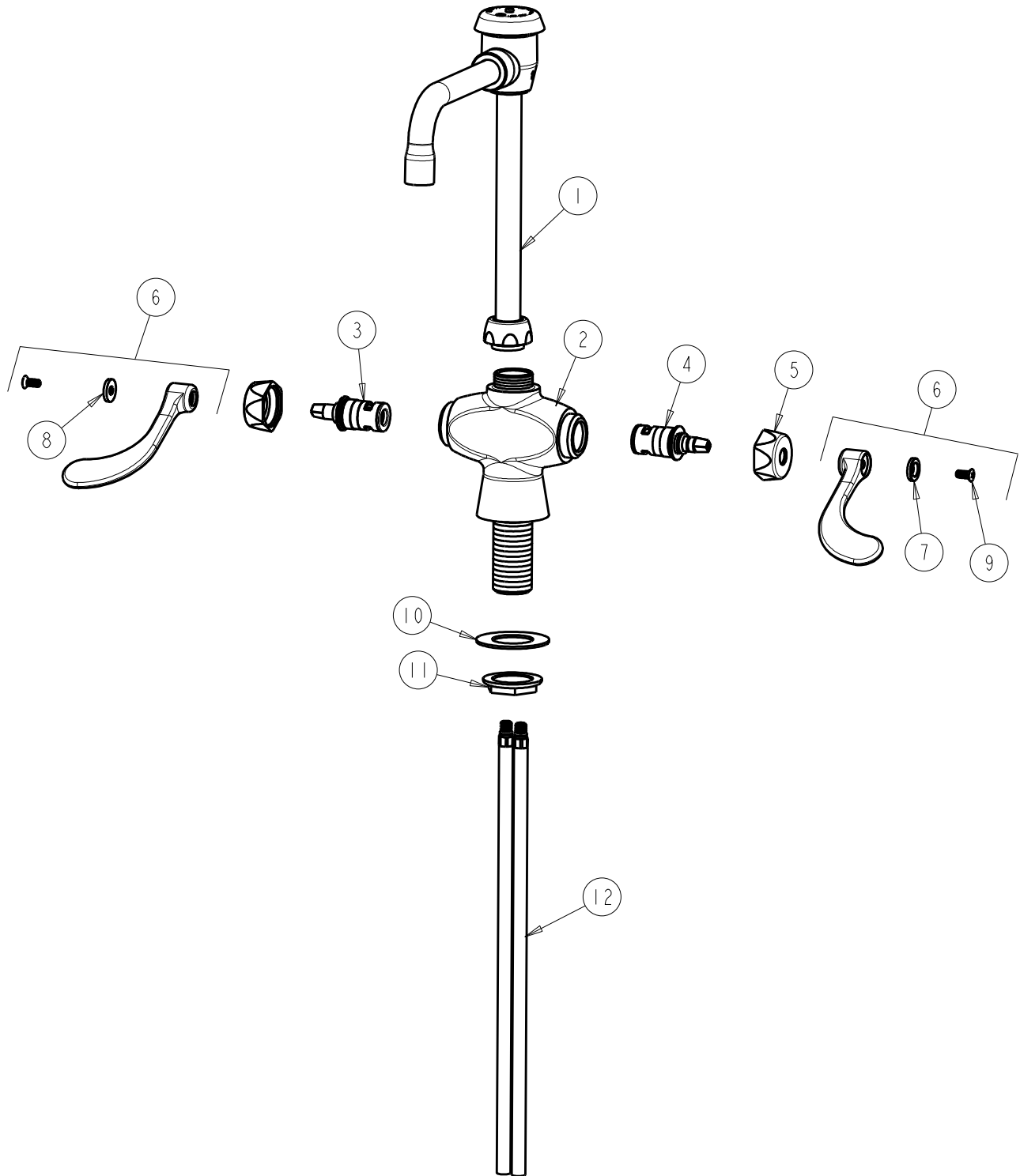
SUBMITTED MODEL NO.

ITEM NO.

**FOR TECHNICAL ASSISTANCE**  
1-800-TEC-TRUE (1-800-832-8783)

BY: SID DATE: 05-25-12

CHK: *[Signature]* REV:



ITEM	PART NO.	DESCRIPTION	ITEM	PART NO.	DESCRIPTION
1	GN2BVBKCP	VACUUM BREAKER SWING SPOUT	7	633-123JKNF	INDEX BUTTON (BLUE)
2	---	VALVE BODY (NOT SOLD SEPARATELY)	8	633-023JKNF	INDEX BUTTON (RED)
3	1-100XKJKNF	LH CERAMIC CARTRIDGE	9	420-010JKRCF	SCREW, 10-32 UNC PH 1/2
4	1-099XKJKNF	RH CERAMIC CARTRIDGE	10	50-014JKNF	STEEL WASHER
5	444-005JKCP	CAP	11	50-003JKRBF	LOCKNUT
6	317-PRJKCP	HANDLE, 4" WRISTBLADE (PAIR)	12	50-101KJKNF	SUPPLY TUBE ASSEMBLY