



a Geberit company

2100 South Clearwater Drive
Des Plaines, IL 60018
Phone: 847-803-5000
Fax: 847-803-5454
www.chicagofaucets.com

REPAIR PARTS

BY: JAR DATE: 02-06-13

CHK: *[Signature]* REV:

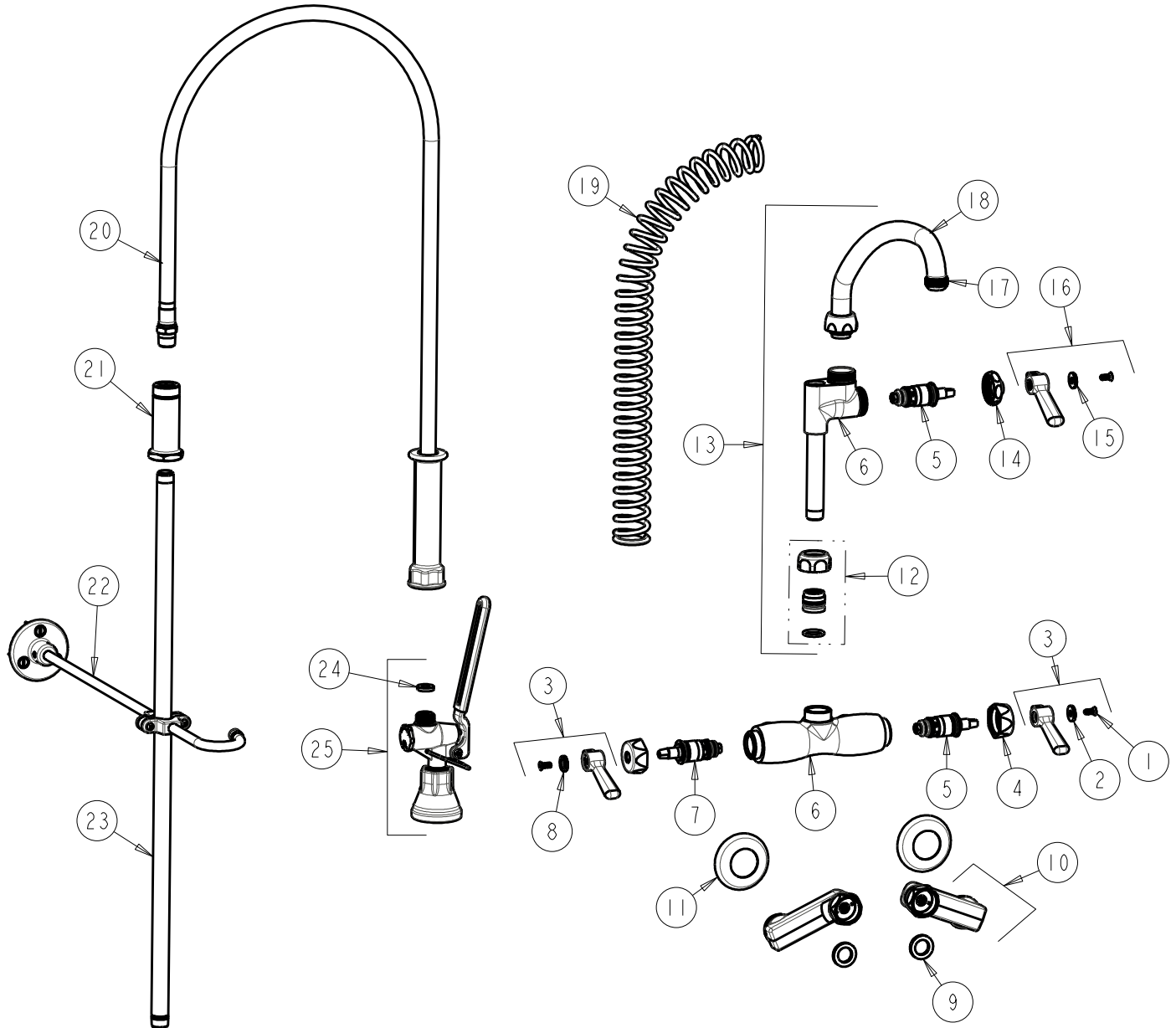
FITTING NO.

923-LHC613AABCP

SUBMITTED MODEL NO.

ITEM NO.

FOR TECHNICAL ASSISTANCE
1-800-TEC-TRUE (1-800-832-8783)



ITEM	PART NO.	DESCRIPTION	ITEM	PART NO.	DESCRIPTION
1	420-010JKRCF	SCREW, 10-32 UNC PH 1/2	14	1-214JKCP	CAP
2	633-123JKNF	INDEX BUTTON (BLUE)	15	633-223JKNF	INDEX BUTTON (WHITE)
3	369-PRJKCP	LEVER HANDLE ASSEMBLY (PAIR)	16	369-PLJKCP	PLAIN LEVER HANDLE
4	444-005JKCP	CAP	17	E1JKABRCF	QUIXTOP OUTLET
5	1-099XTJKABNF	QUATURN CARTRIDGE (RH)	18	L9LESSE3JKCP	SPOUT
6	-----	VALVE BODY (NOT SOLD SEPARATELY)	19	919-014JKCP	SPRING
7	1-100XTJKABNF	QUATURN CARTRIDGE (LH)	20	83-44ABNF	44" HOSE AND HANDLE ASSEMBLY
8	633-023JKNF	INDEX BUTTON (RED)	21	919-038JKABCP	GUIDE SHANK
9	1-011JKNF	WASHER, .97 X .62 X .12	22	902-MHJKCP	PIPE STRAP AND HOOK ASSEMBLY
10	HCJKABCP	ARM ASSEMBLY w/WASHER	23	919-039JKABCP	3/8" NPT X 23" RISER
11	1-055JKCP	FLANGE	24	919-243JKNF	GASKET, .685 X .375 X .125
12	143-PPJKABNF	PRE-PACK	25	90-LABCP	PRE-RINSE VALVE, LOW FLOW
13	613-AABCP	PRE-RINSE ADAPTA FITTING			